

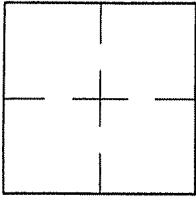
CORNER RECORD

Document Number A.P.# 012-273-03

City of KENTFIELD

County of MARIN, California

Brief Legal Description PARCEL 2 PER 10 P.M. 28



CORNER TYPE

COORDINATES (Optional)

Government Corner Control

Meander Property

Rancho Other

Date of Survey 01/04/06

N. _____
 E. _____
 Zone _____ NAD27 NAD83
 NAD83 Epoch _____
 Elev. _____
 Vert. Datum: NGVD29 NAVD88
 Meas. Units: Metric Imperial

Corner- Left as found Found and tagged Established Reestablished Rebuilt

Identification and type of corner found: Evidence used to identify or procedure used to establish or reestablish the corner:

REESTABLISHED THE SOUTHEASTERLY LINE OF PARCEL 2 AS SHOWN ON SHEET 2.

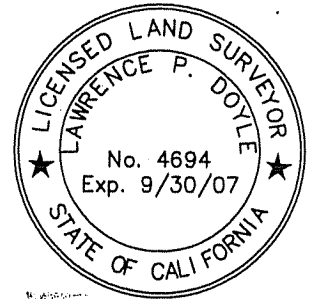
A description of the physical condition of the monument as found and as set or reset: SEE SHEET 2.

SURVEYOR'S STATEMENT

This Corner Record was prepared by me or under my direction in conformance with

the Land Surveyor's Act on JANUARY 4 2006

Signed Lawrence P. Doyle P.L.S. or R.C.E. No. P.L.S. 4694



COUNTY SURVEYOR'S STATEMENT

This Corner Record was received APRIL 3, 2006

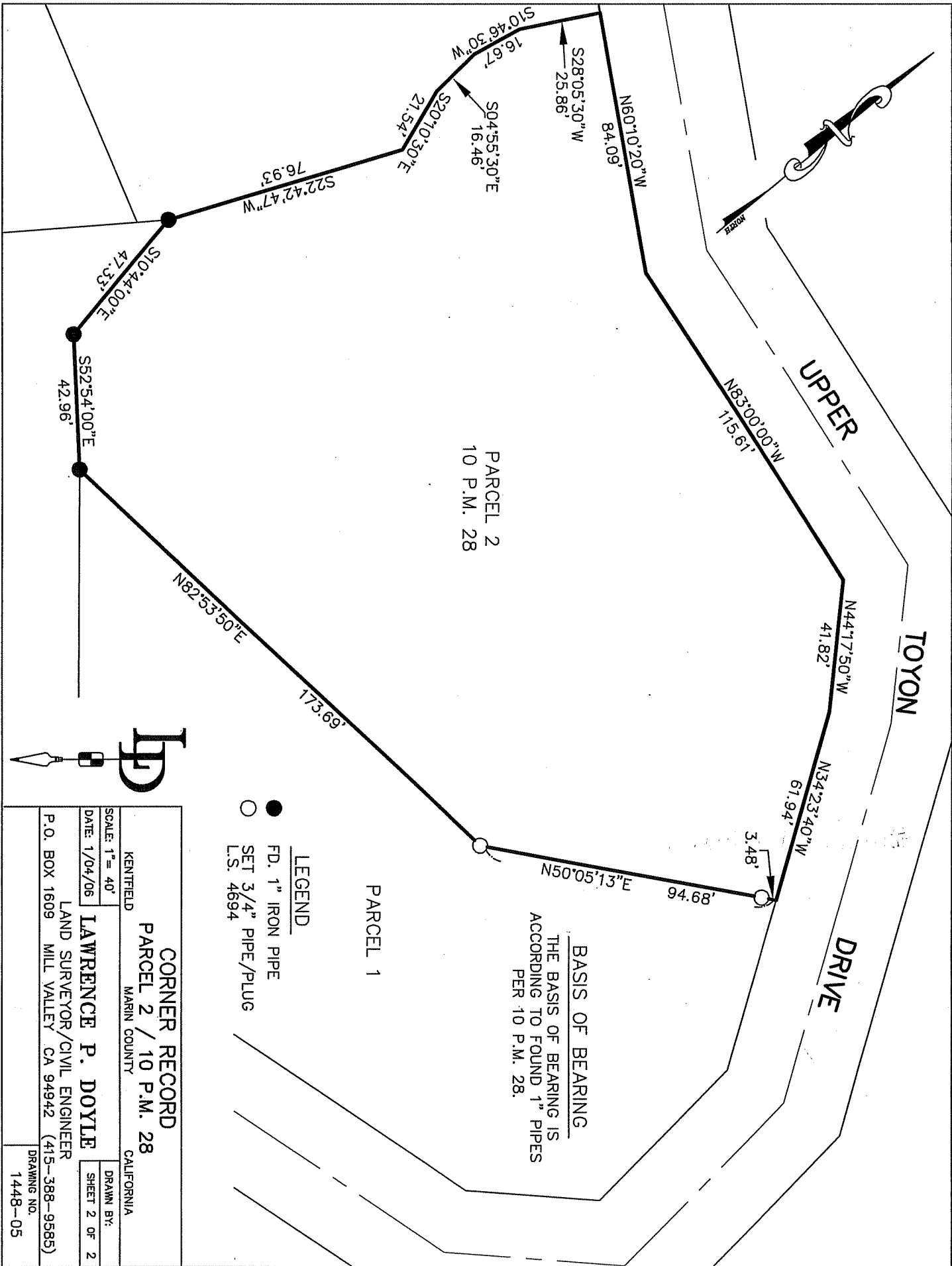
and examined and filed MAY 2, 2006

Signed [Signature] P.L.S. or R.C.E. No. 7128

Title COUNTY SURVEYOR

County Surveyor's Comment _____





CORNER RECORD
PARCEL 2 / 10 P.M. 28

KENTFIELD MARIN COUNTY CALIFORNIA
LAWRENCE P. DOYLE
 LAND SURVEYOR/CIVIL ENGINEER

DATE: 1/04/06
 P.O. BOX 1609 MILL VALLEY CA 94942 (415-388-9585)

SCALE: 1" = 40'
 DRAWN BY: SHEET 2 OF 2
 DRAWING NO. 1448-05