

CORNER RECORD



JERRICO ASSOCIATES

SUITE 27
77 MARK DRIVE
SAN RAFAEL, CA 94903

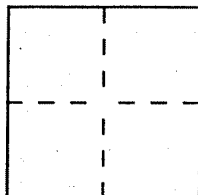
7142

Document Number 12-271-19

City of San Rafael

County of Marin, California

Brief Legal Description 93- 25331 Marin County Records



CORNER TYPE

COORDINATES (Optional)

Government Corner Control
Meander Property
Rancho Other
Date of Survey June 14, 1995

N. _____
E. _____
Zone _____ Datum _____
Elev. _____

Corner — Left as found Found and tagged Established Reestablished Rebuilt

Identification and type of corner found: Evidence used to identify or procedure used to establish or reestablish the corner:

Retracement survey of Lockton's #2562/see

Using old survey controls of Lockton's map. back

A description of the physical condition of the monument as found and as set or reset:

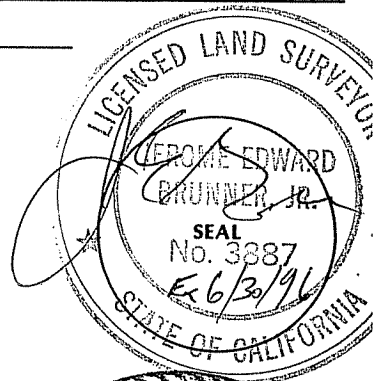
(A) Set #5 rebar and cap LS 3887

(B) Found remains of hub (stob) reset w/#5 rebar and cap LS 3887

SURVEYOR'S STATEMENT

This Corner Record was prepared by me or under my direction in conformance with the Land Surveyors' Act on June 14, 1995.

Signed [Signature] L.S. or R.C.E. Number LS 3887



COUNTY SURVEYOR'S STATEMENT

This Corner Record was received 6-26, 1995 and examined and filed 6-26, 1995.

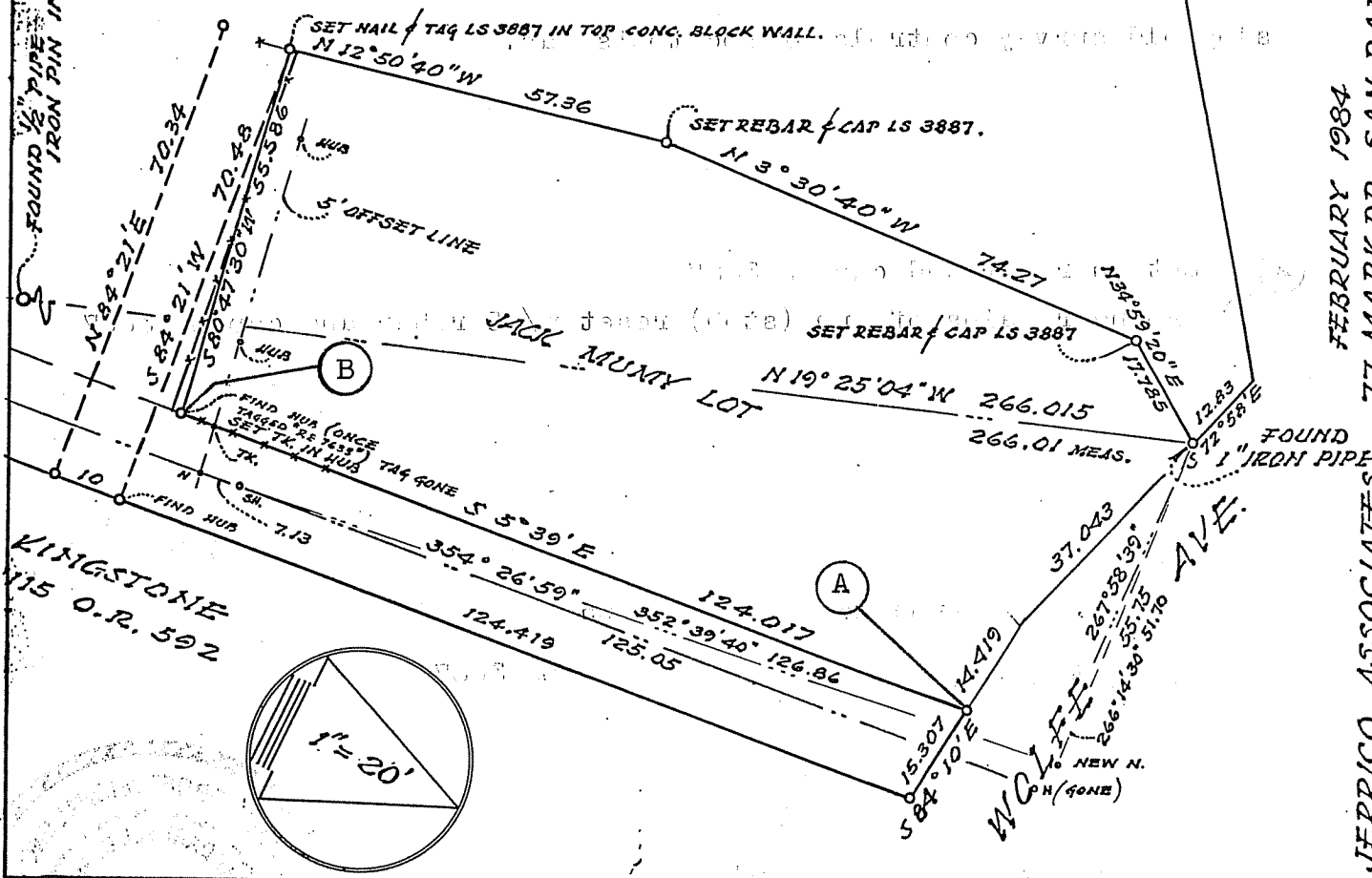
Signed [Signature] Title DCU



County Surveyor's Comment

RETRACEMENT SURVEY OF LOCKTON'S #2562 IN JULY 1959 SOUTHERLY LINE OF A.P. 12-271-19 SAN RAFAEL, CALIFORNIA.

FOUND 1/2" PIPE
IRON PIN IN 1959.



FEBRUARY 1984
77 MARK DR. SAN RAFAEL, CA.
JERRICO ASSOCIATES

REVISED: - 2-27-95 WESTERLY LINE # 7124