

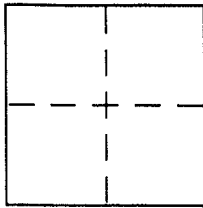
CORNER RECORD

Document Number APN 012-241-41E38

City of SAN RAFAEL

County of MARIN, California

Brief Legal Description EASTERLY LINE OF LOT 5 PER 11 R.M.62



CORNER TYPE

Government Corner Control
Meander Property
Rancho Other
Date of Survey 7-19-05

COORDINATES (Optional)

N. _____
E. _____
Zone _____ NAD27 NAD83
NAD83 Epoch _____
Elev. _____
Vert. Datum: NGVD29 NAVD88
Meas. Units: Metric Imperial

Corner - Left as found Found and tagged Established Reestablished Rebuilt

Identification and type of corner found: Evidence used to identify or procedure used to establish or reestablish the corner:

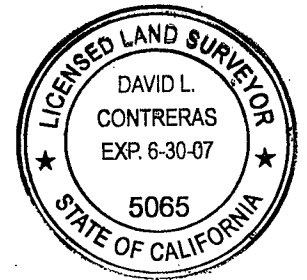
=SEE OVER=

A description of the physical condition of the monument as found and as set or reset:

=SEE OVER=

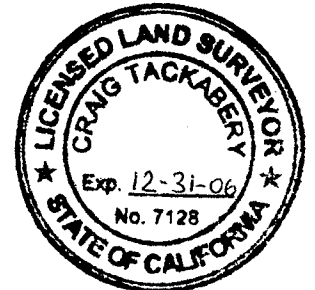
SURVEYOR'S STATEMENT

This Corner Record was prepared by me or under my direction in conformance with the Land Surveyor's Act on JULY 21 2005
Signed David Contreras P.L.S. or R.C.E. No. 5065

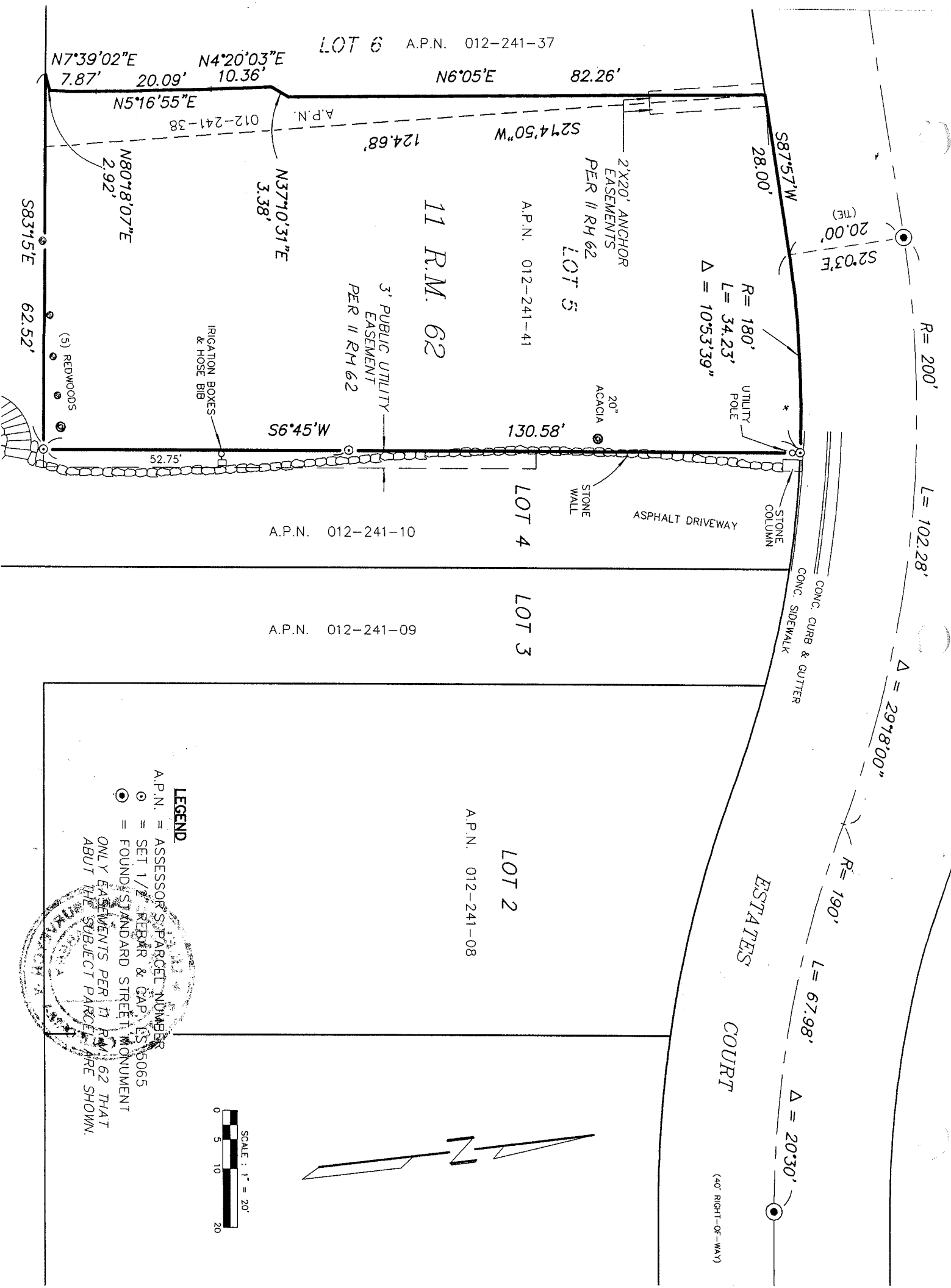


COUNTY SURVEYOR'S STATEMENT

This Corner Record was received JULY 27, 2005
and examined and filed AUGUST 25, 2005
Signed [Signature] P.L.S. or R.C.E. No. 7128
Title COUNTY SURVEYOR



County Surveyor's Comment _____



LEGEND

- A.P.N. = ASSESSOR'S PARCEL NUMBER
 - ⊙ = SET 1/2" REBAR & GAP (SS 5065)
 - ⊙ = FOUND STANDARD STREET MONUMENT
- ONLY EASEMENTS PER 11 R.M. 62 THAT ABUT THE SUBJECT PARCEL ARE SHOWN.

