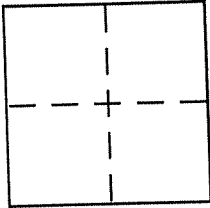


**CORNER RECORD**

Document Number APN 012-241-19  
County of MARIN, California

City of SAN RAFAEL

Brief Legal Description LOT 13 PER 11 R.M. 62



**CORNER TYPE**

Government Corner  Control   
Meander  Property   
Rancho  Other   
Date of Survey 3-4-07

**COORDINATES (Optional)**

N. \_\_\_\_\_  
E. \_\_\_\_\_  
Zone                      NAD27  NAD83   
NAD83 Epoch \_\_\_\_\_  
Elev. \_\_\_\_\_  
Vert. Datum: NGVD29  NAVD88   
Meas. Units: Metric  Imperial

Corner - Left as found  Found and tagged  Established  Reestablished  Rebuilt

Identification and type of corner found: Evidence used to identify or procedure used to establish or reestablish the corner:

= SEE OVER =

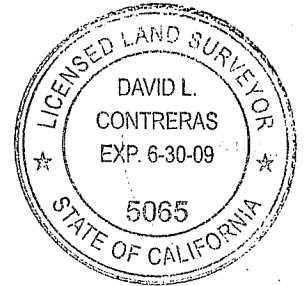
ADDED LINE STAKES TO SURVEY  
PREVIOUSLY DOCUMENTED BY CORNER RECORD.

A description of the physical condition of the monument as found and as set or reset:

= SEE OVER =

**SURVEYOR'S STATEMENT**

This Corner Record was prepared by me or under my direction in conformance with the Land Surveyor's Act on SEPT. 15 2007  
Signed David Contreras (P.L.S. or R.C.E. No. 5065)

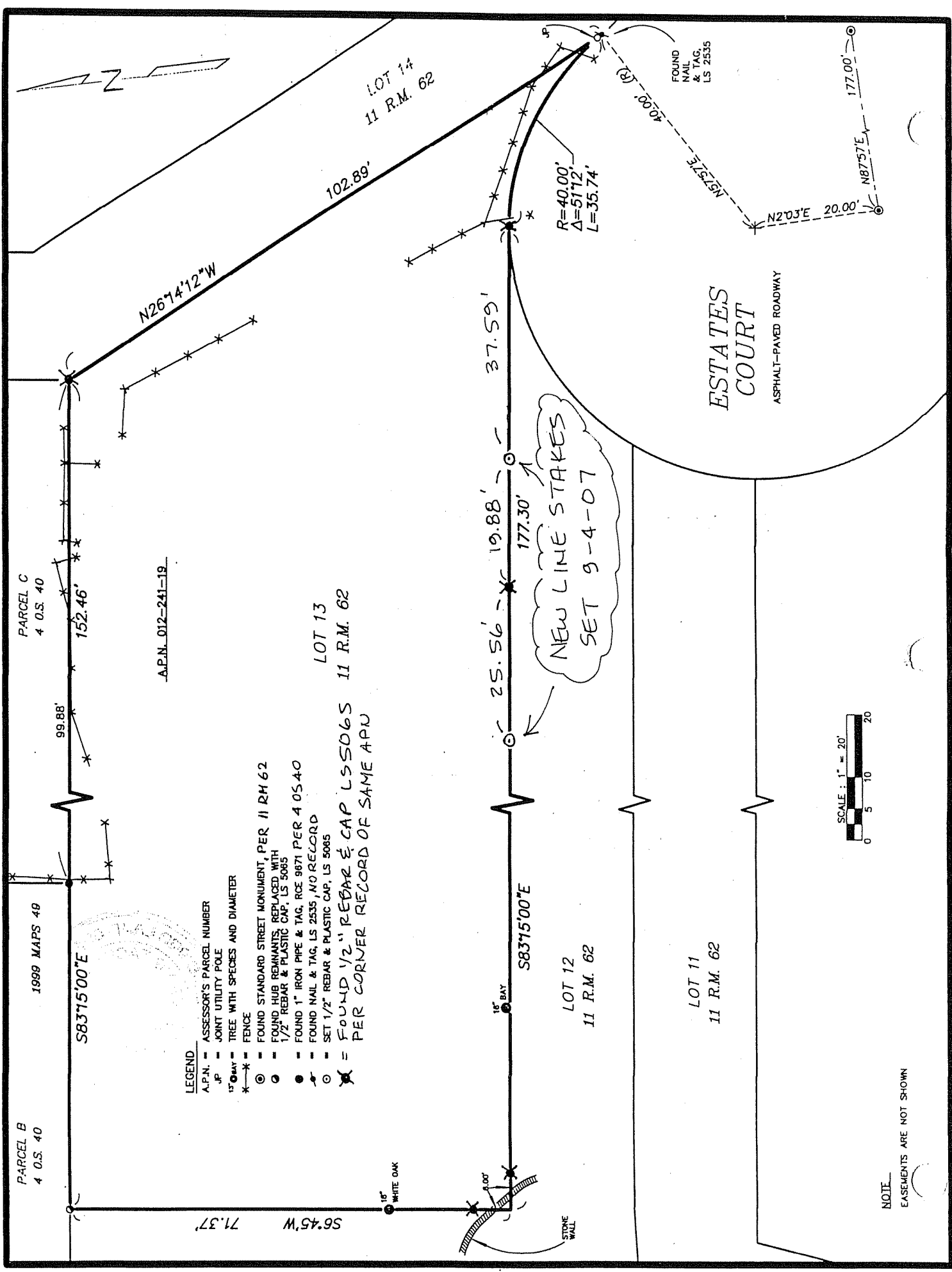


**COUNTY SURVEYOR'S STATEMENT**

This Corner Record was received SEPTEMBER 19, 2007  
and examined and filed OCTOBER 22, 2007  
Signed Craig Tackabery P.L.S. or R.C.E. No. 7128  
Title COUNTY SURVEYOR



County Surveyor's Comment \_\_\_\_\_



PARCEL B  
4 O.S. 40

1999 MAPS 40

PARCEL C  
4 O.S. 40

S8375°00"E

152.46'

N2674°12'W

A.P.N. 012-241-19

**LEGEND**

- A.P.N. = ASSESSOR'S PARCEL NUMBER
- J.P. = JOINT UTILITY POLE
- 1" O.D. = TREE WITH SPECIES AND DIAMETER
- \*-\*- = FENCE
- ⊙ = FOUND STANDARD STREET MONUMENT, PER 11 RM 62
- ⊙ = FOUND HUB REMNANTS REPLACED WITH 1/2" REBAR & PLASTIC CAP, LS 5065
- = FOUND 1" IRON PIPE & TAG, RCE 9871 PER 4 0540
- ⊙ = FOUND NAIL & TAG, LS 2535, NO RECORD
- ⊙ = SET 1/2" REBAR & PLASTIC CAP, LS 5065
- ⊙ = FOUND 1/2" REBAR & CAP LS5065
- ⊙ = PER CORNER RECORD OF SAME APN

LOT 13  
11 R.M. 62

102.89'

S8375°00"E

25.56'

37.59'

NEW LINE STAKES  
SET 9-4-07

R=40.00'  
Δ=51°12'  
L=35.74'

LOT 12  
11 R.M. 62

ESTATES COURT  
ASPHALT-PAVED ROADWAY

FOUND NAIL & TAG, LS 2535



NOTE  
EASEMENTS ARE NOT SHOWN