

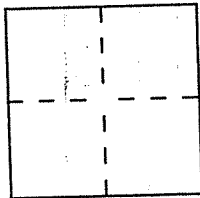
CORNER RECORD

Document Number 12-241-17

City of San Rafael

County of Marin, California

Brief Legal Description Lot 11 of 11 RM 6'2 (AP#12-241-17)



CORNER TYPE

- Government Corner
- Meander
- Rancho
- Date of Survey _____
- Control
- Property
- Other

COORDINATES (Optional)

N. _____
 E. _____
 Zone _____ Datum _____
 Elev. _____

Corner — Left as found Found and tagged Established Reestablished Rebuilt

Identification and type of corner found: Evidence used to identify or procedure used to establish or reestablish the corner:
See Sketch Map for details.

A description of the physical condition of the monument as found and as set or reset:
See Sketch Map for details.

SURVEYOR'S STATEMENT

This Corner Record was prepared by me or under my direction in conformance with the Land Surveyors' Act on 3/23/95 19__.

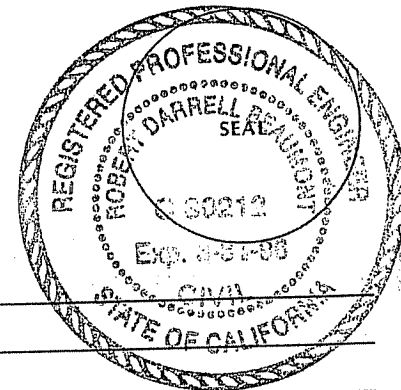
Signed David Hump L.S. or R.C.E. Number 5290



COUNTY SURVEYOR'S STATEMENT

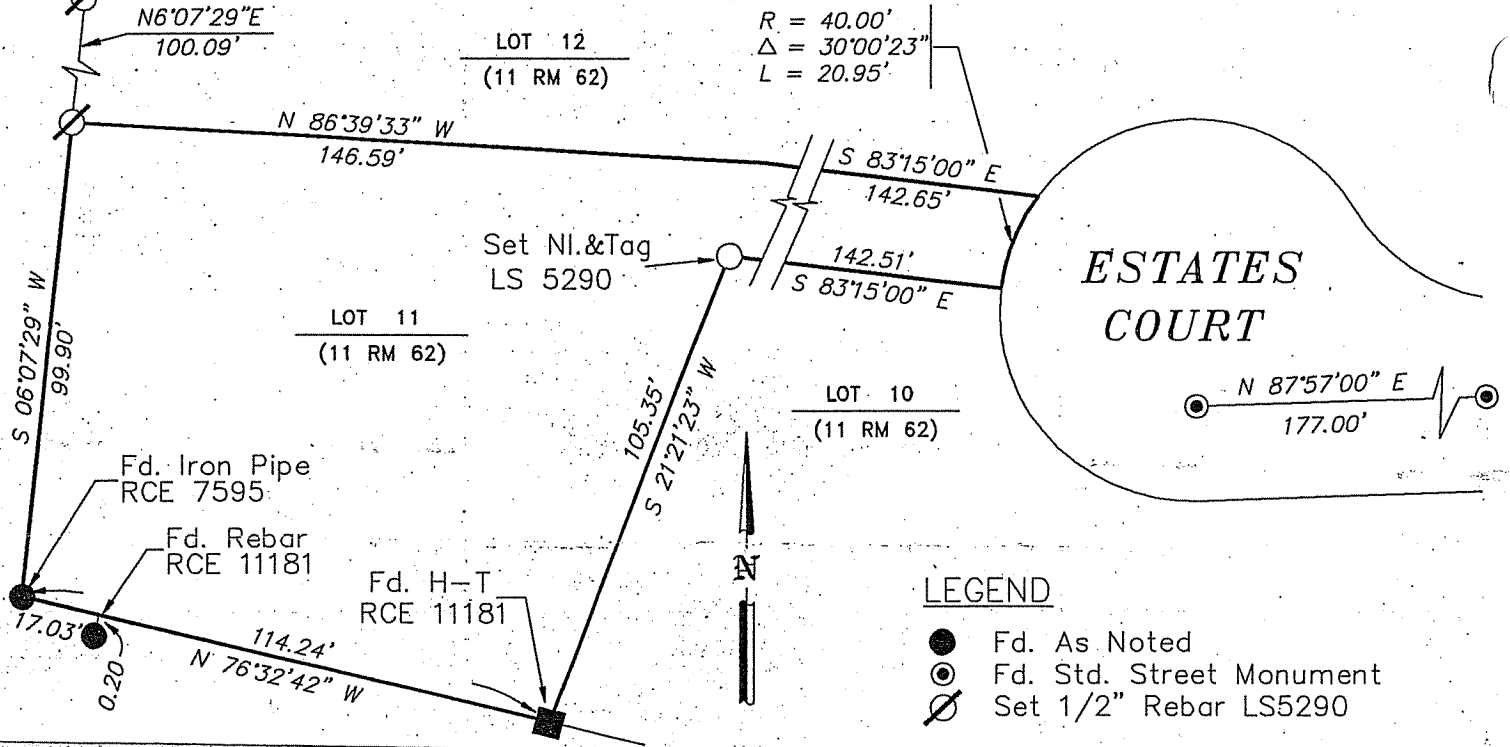
This Corner Record was received 4-3-95 19__ and examined and filed 4-4 1995.

Signed [Signature] Title Des



County Surveyor's Comment _____

SKETCH: (Include reference tie or witness points, remarks and topo of area)



Handwritten notes: 11-145-11-10-11-12-13-14-15-16-17-18-19-20-21-22-23-24-25-26-27-28-29-30-31-32-33-34-35-36-37-38-39-40-41-42-43-44-45-46-47-48-49-50-51-52-53-54-55-56-57-58-59-60-61-62-63-64-65-66-67-68-69-70-71-72-73-74-75-76-77-78-79-80-81-82-83-84-85-86-87-88-89-90-91-92-93-94-95-96-97-98-99-100

