

CORNER RECORD

Document Number

012-201-42

City of San Rafael

County of

Marin

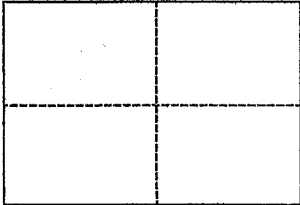
California

Brief Legal Description

Parcel A as shown in Book 1999 ROS 49

CORNER TYPE

**COORDINATES
(Optional)**



Government Corner Control

North

Meander Property

East

Rancho Other

Zone Datum

Date of Survey May 15, 2013

Elev.

Corner Left as found Found and tagged Established Reestablished Rebuilt

Identification and type of corner found: Evidence used to identify or procedure used to establish or reestablish the corner:

Found and Held Street Monuments along the Centerline of Greenwood Avenue as shown on 1999 ROS 49. Held Record distance for boundary closure and location.

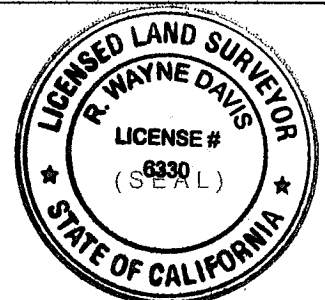
A description of the physical condition of the monument as found and as set or reset:

Set 3/4" Iron Pipes Tagged LS 6330 at Boundary Corners and 2"x2" Hub and Tack for Points on Line.

SURVEYOR'S STATEMENT

This Corner Record was prepared by me or under my direction in conformance with the Land Surveyors' Act on July 6, 2013

Signed [Signature] L.S. Number 6330



COUNTY SURVEYOR'S STATEMENT

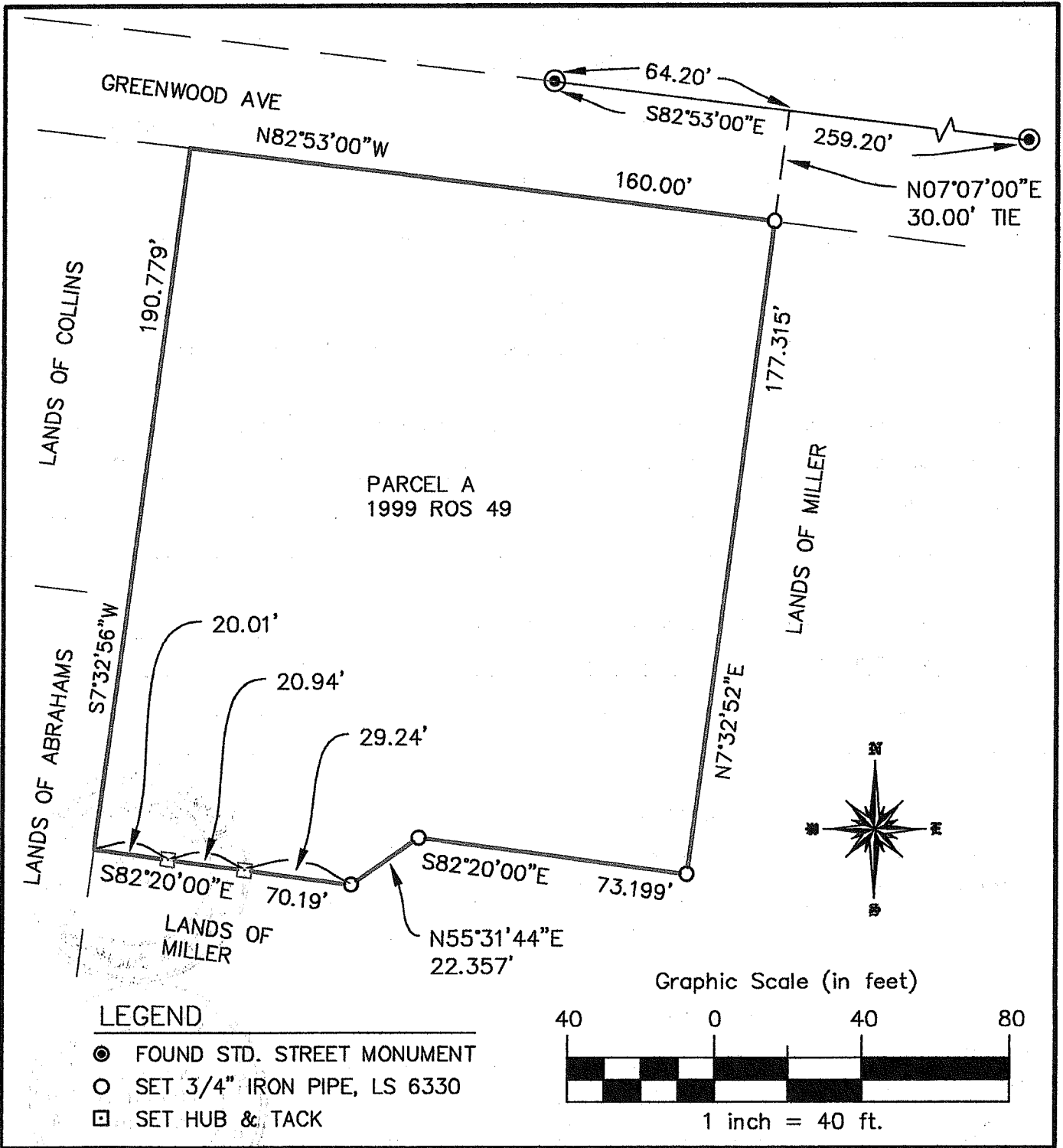
This Corner Record was received SEPTEMBER 14, 2013

and examined and filed OCTOBER 1, 2013

Signed [Signature] Title DEPUTY CO. SURVEYOR



County Surveyor's Comment



LEGEND

- ⊙ FOUND STD. STREET MONUMENT
- SET 3/4" IRON PIPE, LS 6330
- SET HUB & TACK



R.W. DAVIS & ASSOCIATES, INC.
LAND SURVEYORS

45 Leveroni Court
Novato CA 94949
L.S. 6330

Tel. (415) 883-9099
Fax (415) 883-2016
Email: rwdavis@rwdavis-survey.com

Rev.	Date: 07-06-2013
Job No. 396-002	Scale: 1"=40'

CORNER RECORD
LANDS OF MOORE
APN 12-201-42