

CORNER RECORD

Document Number

012-201-33&34

City of **San Rafael**

County of

Marin

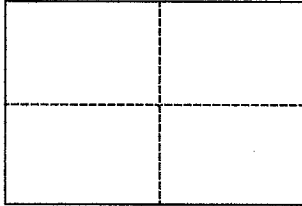
California

Brief Legal Description

Parcels A & B of Volume 8 of Official Records, at Page 49

CORNER TYPE

**COORDINATES
(Optional)**



Government Corner	Control	North
Meander	Property X	East
Rancho	Other	Zone Datum
Date of Survey	05-15-13	Elev.

Corner _____ Left as found Found and tagged Established Reestablished Rebuilt

Identification and type of corner found: Evidence used to identify or procedure used to establish or reestablish the corner:

Found and Held Street Monuments along the Centerline of Greenwood Avenue as shown on 8 ROS 49. Held Record Distance to reestablish corners (see attached sketch).

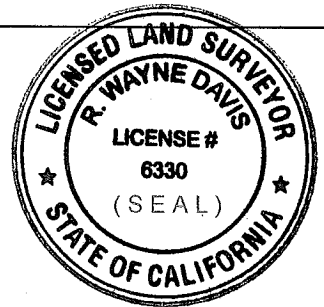
A description of the physical condition of the monument as found and as set or reset:

Set 3/4" Iron Pipe Tagged LS 6330

SURVEYOR'S STATEMENT

This Corner Record was prepared by me or under my direction in conformance with the Land Surveyors' Act on July 6, 2013

Signed [Signature] L.S. Number 6330



COUNTY SURVEYOR'S STATEMENT

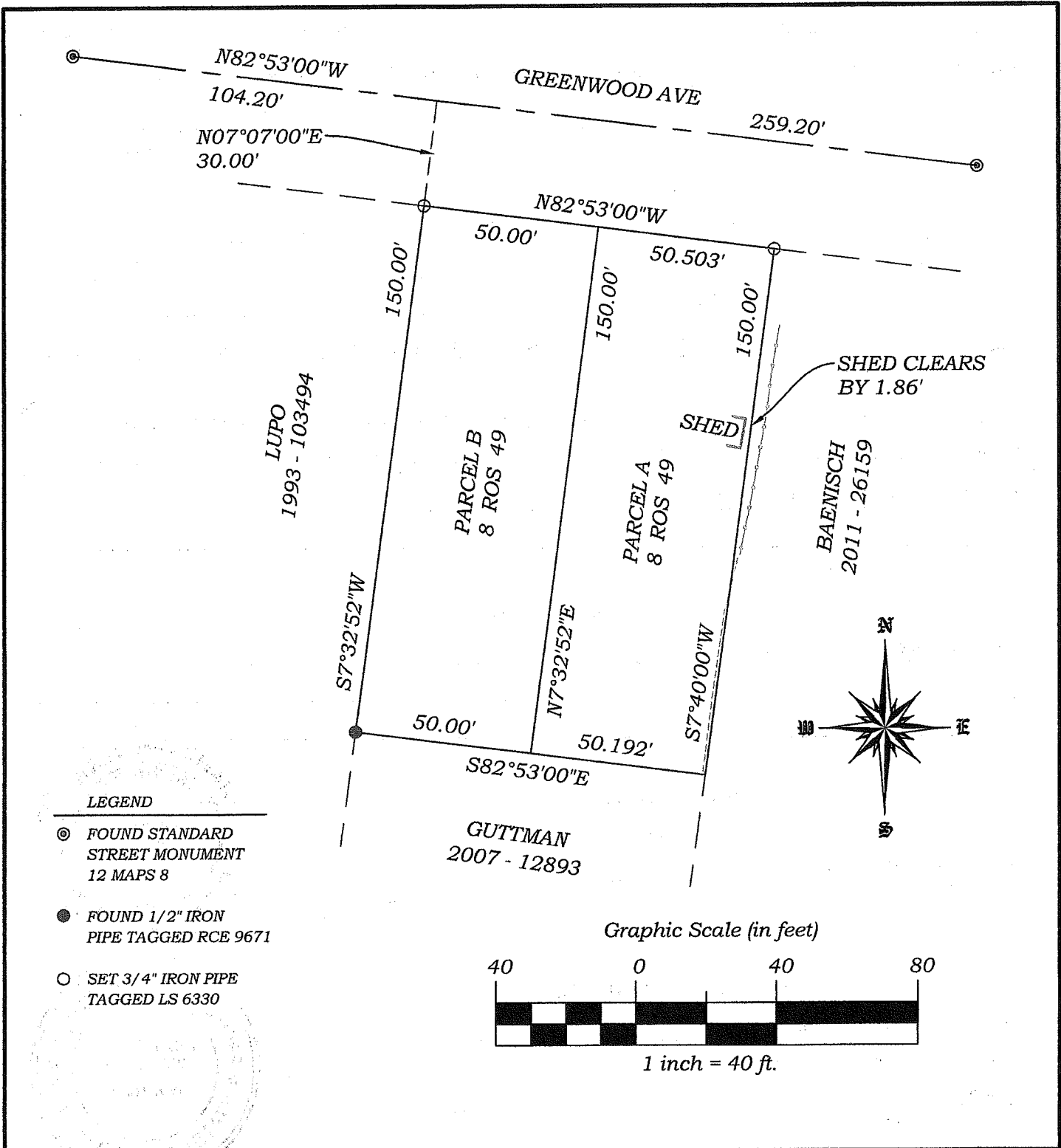
This Corner Record was received AUGUST 14, 2013

and examined and filed OCTOBER 1, 2013

Signed [Signature] Title DEPUTY CO. SURVEYOR



County Surveyor's Comment _____



R.W. DAVIS & ASSOCIATES, INC.
LAND SURVEYORS

45 Leveroni Court
 Novato CA 94949
 L.S. 6330

Tel. (415) 883-9099
 Fax (415) 883-2016
 Email: rwdavis@rwdavis-survey.com

© 2013

Rev.	Date: 07-06-13
Job No. 396-001	Scale: 1" = 40'

CORNER RECORD
PARCEL A AND B
8 ROS 49
APN 012 - 201 - 33 & 34