

# CORNER RECORD

Document Number A.P.# 012-162-03

City of SAN RAFAEL

County of MARIN, California

Brief Legal Description LOT 16 6 R.M. 73

### CORNER TYPE

Government Corner  Control   
Meander  Property   
Rancho  Other   
Date of Survey 4/10/03

### COORDINATES (Optional)

N. \_\_\_\_\_  
E. \_\_\_\_\_  
Zone \_\_\_\_\_ NAD27  NAD83   
NAD83 Epoch \_\_\_\_\_  
Elev. \_\_\_\_\_  
Vert. Datum: NGVD29  NAVD88   
Meas. Units: Metric  Imperial

Corner: Left as found  Found and tagged  Established  Reestablished  Rebuilt

Identification and type of corner found: Evidence used to identify or procedure used to establish or reestablish the corner:  
ESTABLISHED PROPERTY CORNERS FROM FOUND STREET MONUMENTS ON KNOLL ROAD.

A description of the physical condition of the monument as found and as set or reset: SEE SHEET 2.

### SURVEYOR'S STATEMENT

This Corner Record was prepared by me or under my direction in conformance with

the Land Surveyor's Act on APRIL 14 2003

Signed Lawrence P. Doyle P.L.S. or R.C.E. No. P.L.S. 4694



### COUNTY SURVEYOR'S STATEMENT

This Corner Record was received MAY 12, 2003

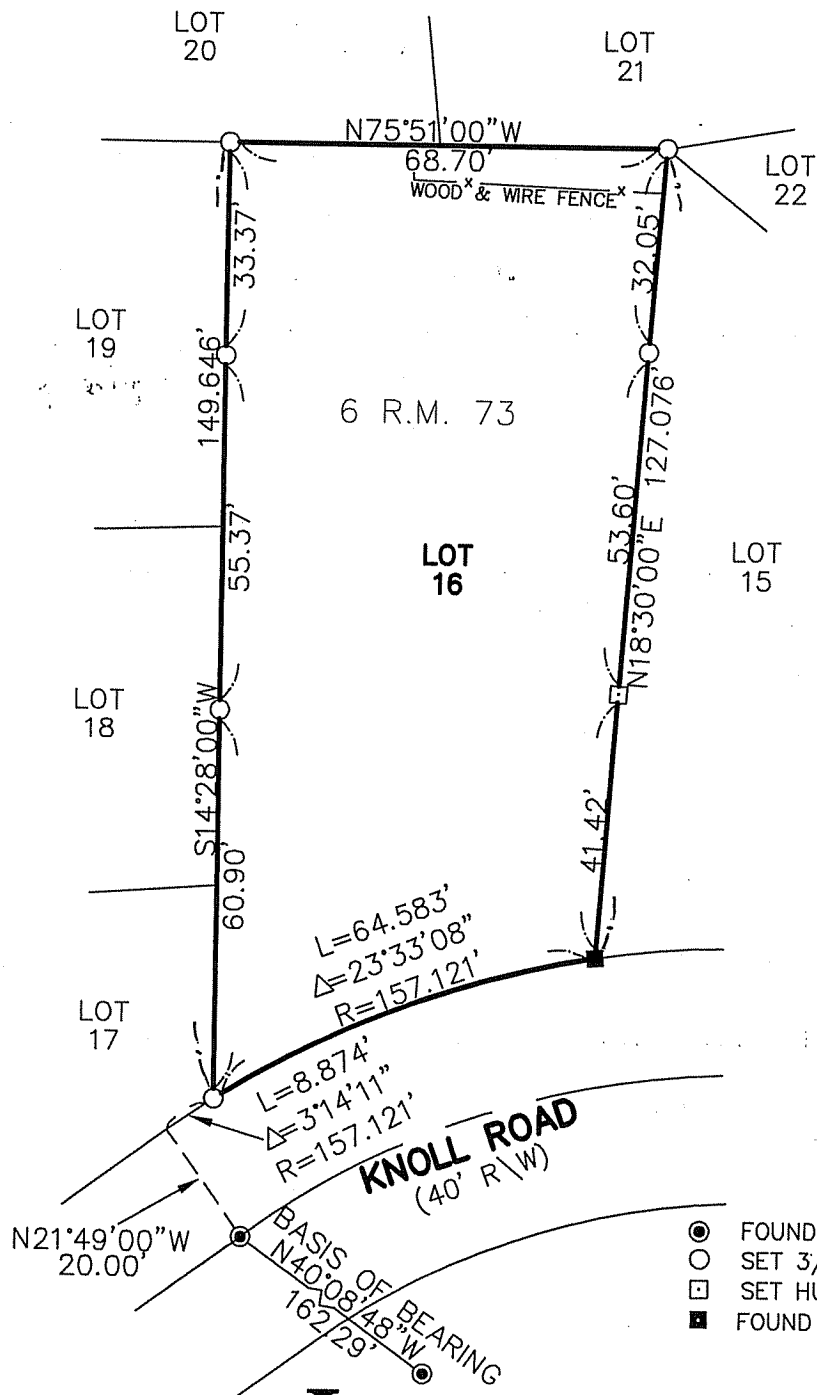
and examined and filed MAY 16, 2003

Signed [Signature] P.L.S. or R.C.E. No. 7128

Title County Surveyor

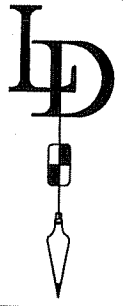
County Surveyor's Comment \_\_\_\_\_





- FOUND 1" PIPE R.C.E. 3230
- SET 3/4" PIPE & PLUG L.S. 4694
- SET HUB & TAG L.S. 4694
- FOUND HUB & TAG L.S. 2535

**BASIS OF BEARING**  
 THE BASIS OF BEARING FOR THIS SURVEY IS N40°08'48"W BETWEEN FOUND MONUMENTS ON KNOLL ROAD. (6 R.M. 73)



<b>CORNER RECORD</b>		
<b>LOT 16 6 R.M. 73</b>		
SAN RAFAEL	MARIN COUNTY	CALIFORNIA
SCALE: 1" = 30'	DATE: 4/11/03	DRAWN BY: LAWRENCE P. DOYLE
LAND SURVEYOR/CIVIL ENGINEER		SHEET 2 OF 2
P.O. BOX 1609 MILL VALLEY CA 94942 (415-388-9585)		
		DRAWING NO. 1149-03