

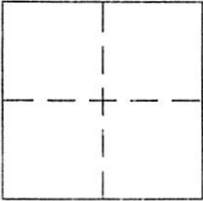
CORNER RECORD

Document Number 012-161-43

City of SAN RAFAEL

County of MARIN, California

Brief Legal Description LOT 5 AS SHOWN ON THE MAP ENTITLED "MAP OF MADRONA SUBDIVISION - UNIT II SAN RAFAEL, CALIFORNIA" FILED MAY 28, 1965 IN VOL. 13 MAPS PAGE 16, MARIN COUNTY RECORDS



CORNER TYPE

Government Corner Control
 Meander Property
 Rancho Other
 Date of Survey 9/21/2016

COORDINATES (Optional)

N. _____
 E. _____
 Zone _____ NAD27 NAD83
 NAD83 Epoch _____
 Elev. _____
 Vert. Datum: NGVD29 NAVD88
 Meas. Units: Metric Imperial

Corner - Left as found Found and tagged Established Reestablished Rebuilt

Identification and type of corner found: Evidence used to identify or procedure used to establish or reestablish the corner:
SEE PAGE 2; MONUMENTS FOUND: PIN IN CONCRETE IN HANDWELL (DESCRIBED AS "MON." PER 13 RM 16) WE FOUND MONUMENTS TO BE WITHIN 0.03' FROM RECORD DISTANCE PER 36 OS 59.

A description of the physical condition of the monument as found and as set or reset:
SEE PAGE 2; SET 5/8" REBAR AND CAP "PLS 6784"

SURVEYOR'S STATEMENT

This Corner Record was prepared by me or under my direction in conformance with the Land Surveyor's Act on 7/13 2017

Signed [Signature] P.L.S. or R.C.E. No. 6784



COUNTY SURVEYOR'S STATEMENT

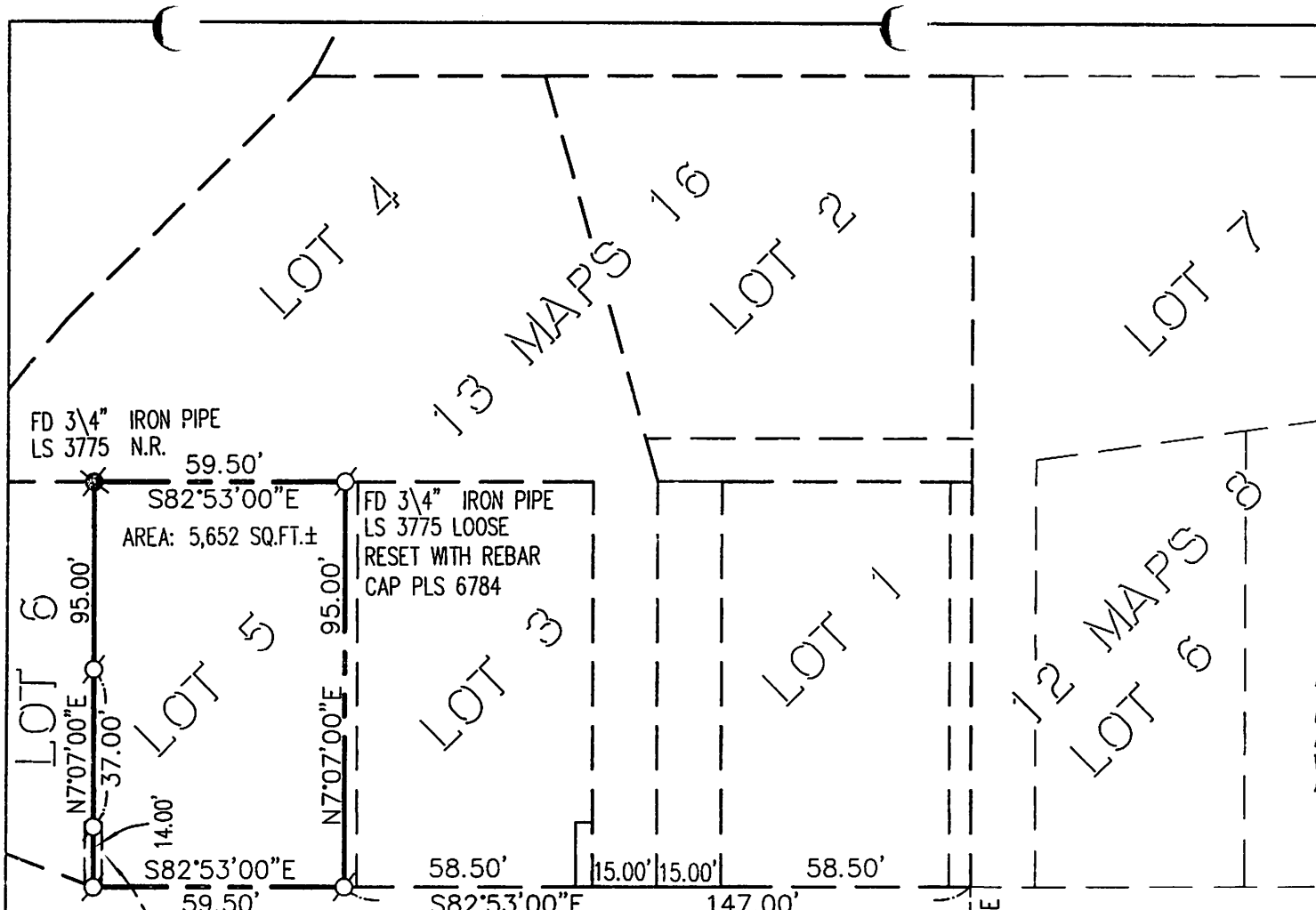
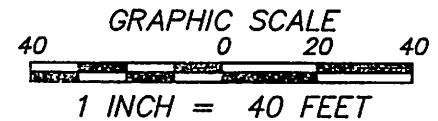
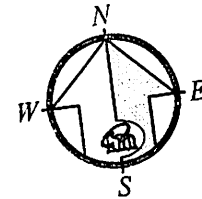
This Corner Record was received _____ and examined and filed AUG. 08, 2017

Signed [Signature] P.L.S. or R.C.E. No. 9292

Title DEPUTY L.S.



County Surveyor's Comment _____



GREENWOOD AVE.
(60' WIDE)

2' BY 15' PUBLIC
UTILITY EASEMENT

REFERENCE

"MAP OF MADRONA SUBDIVISION -
UNIT II, SAN RAFAEL, CALIFORNIA"
FILED FOR RECORD MAY 28, 1965 IN
VOLUME 13 OF MAPS, AT PAGE 16,
MARIN COUNTY RECORDS.

LEGEND

- ⊗ FOUND AS NOTED
- ⊙ FOUND STREET MONUMENT (PIN
IN CONCRETE IN HAND WELL)
- ⊕ SET 5/8" REBAR WITH CAP,
PLS 6784
- ⊖ N.R. NOT OF RECORD

BASIS OF BEARING
N82°53'00"W
259.10'
(259.13')36 OS 59
(259.20')13 MAPS 16

NOTE:
RECORD=MEASURED UNLESS OTHERWISE
NOTED.



CORNER RECORD

MERIDIAN SURVEYING
ENGINEERING, INC.

2958 VAN NESS AVENUE
SAN FRANCISCO, CA 94109
(415) 440-4131

16080

777 GRAND AVENUE, #202
SAN RAFAEL, CA 94901
(415) 456-5450

surveyrequest@meridiansurveying.com