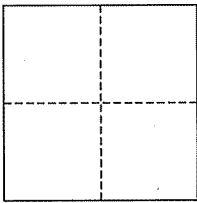


**CORNER RECORD**

City of San Rafael

Document Number 012-141-64,65  
County of Marin, California

Brief Legal Description Lots 2 & 3 of 10 RS 98



**CORNER TYPE**

Government Corner  Control   
Meander  Property   
Rancho  Other   
Date of Survey \_\_\_\_\_

**COORDINATES (Optional)**

N. \_\_\_\_\_  
E. \_\_\_\_\_  
Zone \_\_\_\_\_ NAD27  NAD83   
NAD83 Epoch \_\_\_\_\_  
Elev. \_\_\_\_\_  
Vert. Datum: NGVD29  NAVD88   
Meas. Units: Metric  Imperial

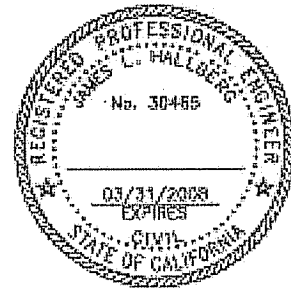
**Corner-** Left as found  Found and tagged  Established  Reestablished  Rebuilt

Identification and type of corner found: Evidence used to identify or procedure used to establish or reestablish the corner:  
Found Iron Pipes & Brass Tag (LS 2731) on NW'ly Property Corners, per 10 RS 98.

A description of the physical condition of the monument as found and as set or reset: Set Iron Pipe & Plug at 10'  
extension of the NW'ly corners, and Hub & Brass Tag along the NW'ly and adjacent Property Line, as shown  
and per 10 RS 98.

**SURVEYOR'S STATEMENT**

This corner Record was prepared by me or under my direction in conformance with  
the Land Surveyor's Act on [Signature]  
Signed \_\_\_\_\_ P.L.S. or R.C.E. No. 30465

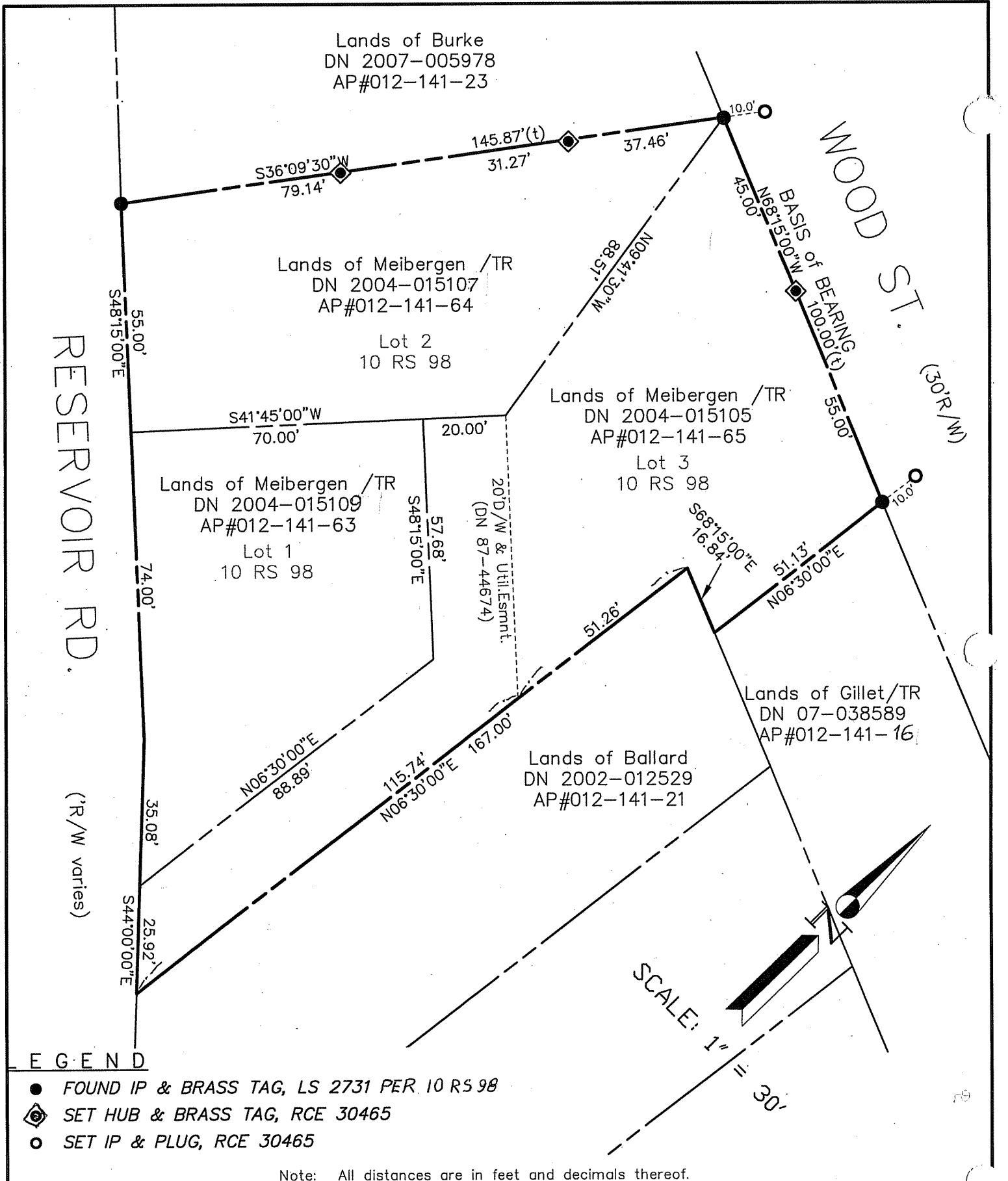


**COUNTY SURVEYOR'S STATEMENT**

This Corner Record was received OCTOBER 22, 2007  
and examined and filed NOVEMBER 26, 2007  
Signed [Signature] P.L.S. or R.C.E. No. 7128  
Title COUNTY SURVEYOR



**County Surveyor's Comment** \_\_\_\_\_



**E G E N D**

- FOUND IP & BRASS TAG, LS 2731 PER 10 RS 98
- ⊕ SET HUB & BRASS TAG, RCE 30465
- SET IP & PLUG, RCE 30465

Note: All distances are in feet and decimals thereof.

SHEET	1	OF	1
SCALE:	1" = 30'	DESIGN:	PR
DATE:	Jul. 2007	DRAWN:	PR
FILE:	2002-065	CHECKED:	J.L.H

**J.L. ENGINEERING**  
**CIVIL ENGINEERS-LAND SURVEYORS**  
 1539 4th ST., SAN RAFAEL, CA. 94901 (415) 457-6647

**Corner Record**  
 Lands of Meibergen /TR - 114 Reservoir Ave.  
 APN 012-141-64&65, San Rafael, Marin County, CA