

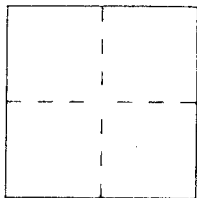
CORNER RECORD

Document Number AP# 012-132-83

City of SAN RAFAEL

County of MARIN, California

Brief Legal Description LOT 56; TRM 41 & 18 PM 69



CORNER TYPE

Government Corner Control
 Meander Property
 Rancho Other
 Date of Survey _____

COORDINATES (Optional)

N. _____
 E. _____
 Zone _____ Datum _____
 Elev. _____

Corner — Left as found Found and tagged Established Reestablished Rebuilt

Identification and type of corner found: Evidence used to identify or procedure used to establish or reestablish the corner:

FND. HUB & TACK, & CUT CROSSES IN CONC., AS SHOWN ON TRM 41, AND ON REVERSE.

A description of the physical condition of the monument as found and as set or reset:

SET 3/4" I.P. & TAG PLS 5296, SET NAIL & TAG PLS 5296, AS SHOWN ON REVERSE.

SURVEYOR'S STATEMENT

This Corner Record was prepared by me or under my direction in conformance with the Land Surveyors' Act on JULY 20, 2000

Signed [Signature] L.S. or R.C.E. Number PLS 5296



COUNTY SURVEYOR'S STATEMENT

This Corner Record was received 8-16-2000 and examined

and filed 8-18-2000

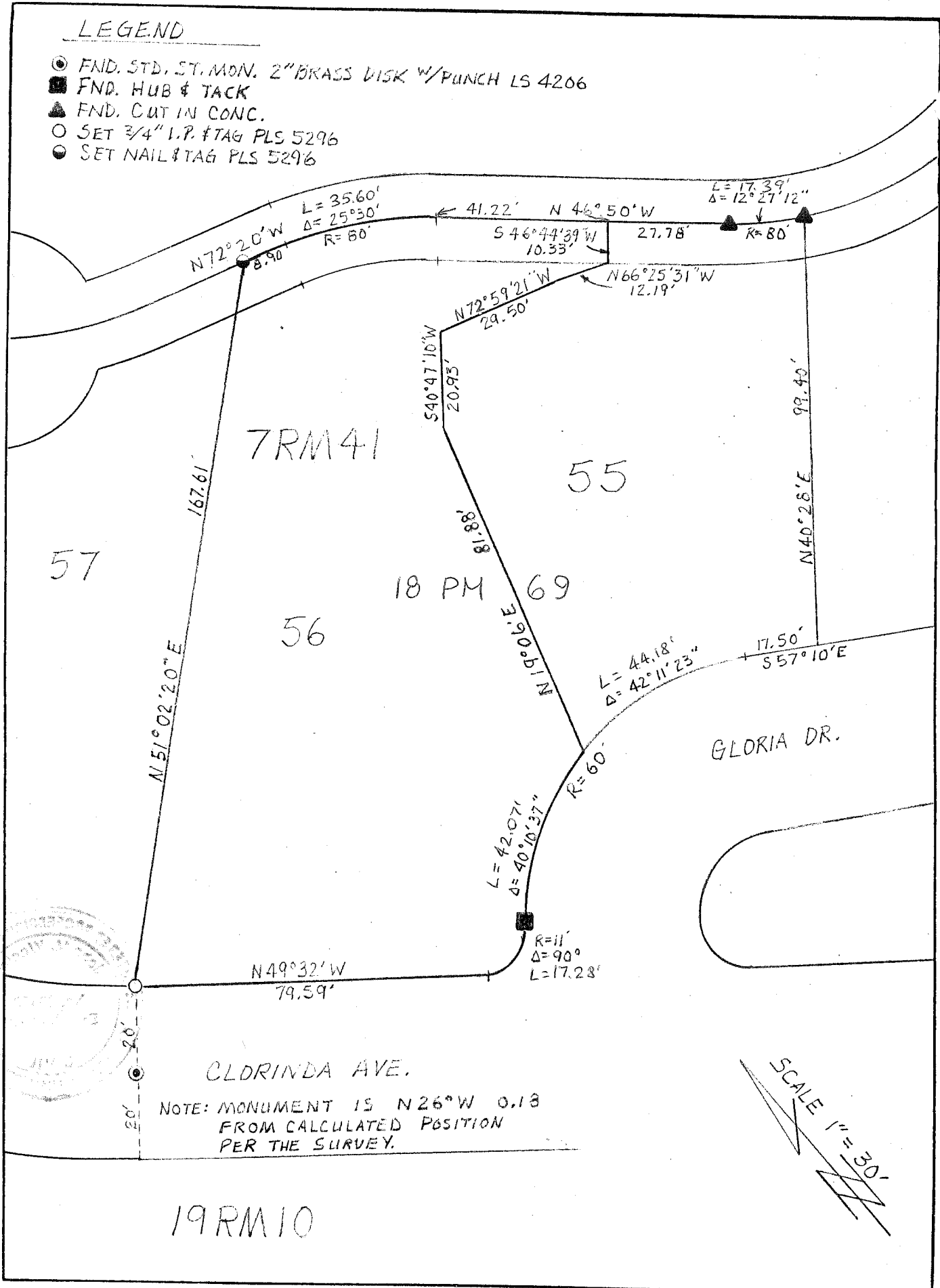
Signed [Signature] Title DEPUTY



County Surveyor's Comment _____

LEGEND

- ⊙ FND. STD. ST. MON. 2" BRASS DISK W/PUNCH LS 4206
- FND. HUB & TACK
- ▲ FND. CUT IN CONC.
- SET 3/4" I.P. #TAG PLS 5296
- SET NAIL & TAG PLS 5296



NOTE: MONUMENT IS N26°W 0.18
FROM CALCULATED POSITION
PER THE SURVEY.

