

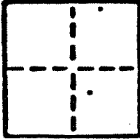
CORNER RECORD

AP# 12-132-37

COUNTY OF MARIN T. R. MERIDIAN CALIFORNIA

CORNER TYPE: GOVT. CORNER MEANDER RANCHO CONTROL OTHER

CORNER IDENTIFICATION - DATE OF VISIT - SEPTEMBER 19 89



CORNER - LEFT AS FOUND FOUND AND TAGGED REESTABLISHED OBLITERATED CORNER RESULT

PHYSICAL DESCRIPTION OF CORNER FOUND; EVIDENCE AND METHOD USED TO IDENTIFY OR REESTABLISH

FOUND STANDARD STREET MONUMENTS AS SHOWN ON "MAP OF MESA VISTA SUBDIVISION NO. TWO"

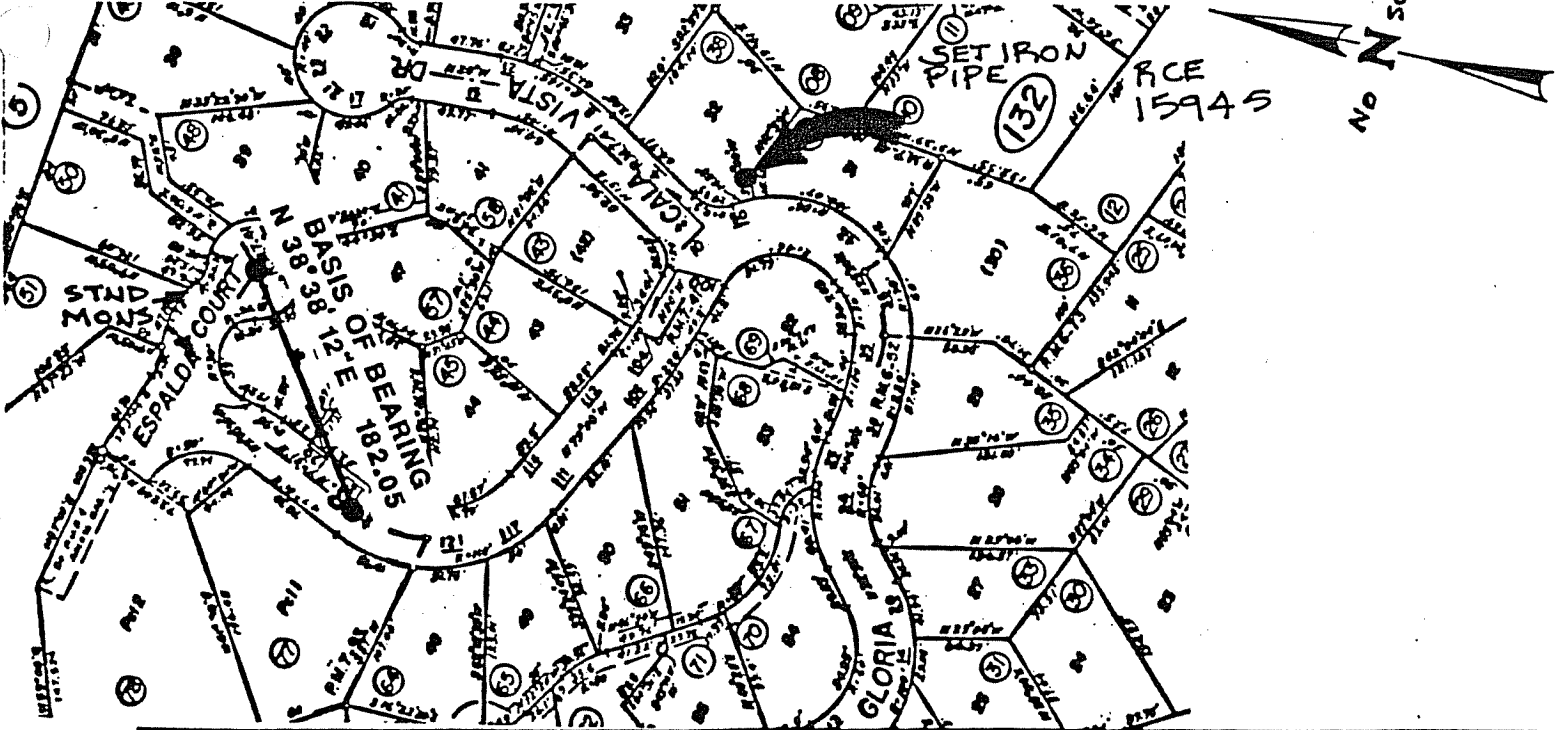
7 RM PAGE 41

PHYSICAL DESCRIPTION OF MONUMENTS RESULT OR PERPETUATED

SET 3/4" IRON PIPE & PLUG R.C.E # 15945

CALIFORNIA COORDINATE SYSTEM ORDER: FIRST SECOND THIRD
STATIONS USED: NGS (USC & GS) STATE COUNTY OTHER STATION STATION
ZONE ELEVATION NORTHINGS (N) EASTINGS (E)

SKETCH: (Include reference tie or witness points, remarks and topo of area)



SURVEYOR'S CERTIFICATE

THIS CORNER RECORD WAS PREPARED BY ME OR UNDER MY DIRECTION IN CONFORMANCE WITH THE LAND SURVEYORS ACT ON September

SIGNED: W. Ed. Nute
L.S. or R.C.E. No. 15945

COUNTY SURVEYOR'S CERTIFICATE

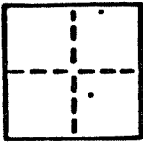
THE CORNER RECORD WAS RECEIVED 12/30 19 89
AND EXAMINED AND FILED 12/31 19 89
BY
TITLE
DOCUMENT No.

CORNER RECORD

AP# 12-132-37

COUNTY OF MARIN T. 7 R. 1 MERIDIAN CALIFORNIA

CORNER TYPE: GOVT. CORNER MEANDER RANCHO CONTROL OTHER
CORNER IDENTIFICATION - DATE OF VISIT - SEPTEMBER 19 89



CORNER - LEFT AS FOUND FOUND AND TAGGED REESTABLISHED OBLITERATED CORNER RESULT

PHYSICAL DESCRIPTION OF CORNER FOUND; EVIDENCE AND METHOD USED TO IDENTIFY OR REESTABLISH

FOUND STANDARD STREET MONUMENTS AS SHOWN ON "MAP OF MESA VISTA SUBDIVISION NO. TWO"

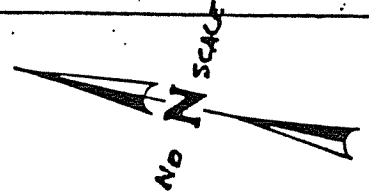
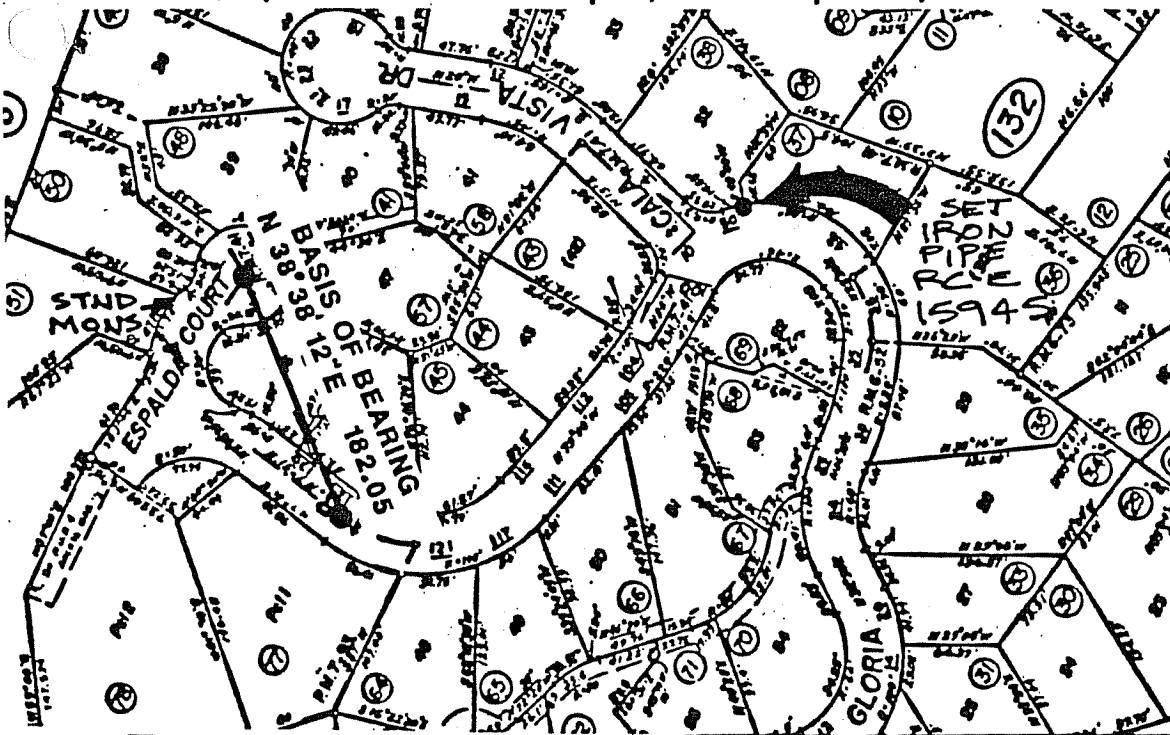
7 RM PAGE 41

PHYSICAL DESCRIPTION OF MONUMENTS REBUILT OR PERPETUATED

SET 3/4" IRON PIPE & PLUG R.C.E # 15945

CALIFORNIA COORDINATE SYSTEM ORDER: FIRST SECOND THIRD
STATIONS USED: NGS (USC & GS) STATE COUNTY OTHER STATION _____ STATION _____
ZONE _____ ELEVATION _____ NORTHINGS (N) _____ EASTINGS (E) _____

SKETCH: (Include reference tie or witness points, remarks and topo of area)



SURVYOR'S CERTIFICATE

THIS CORNER RECORD WAS PREPARED BY ME OR UNDER MY DIRECTION IN CONFORMANCE WITH THE LAND SURVEYORS ACT ON September 1989

SIGNED: W. Edward Nute
L.S. or R.C.E. No. 15945
No. 15925
Exp. 4/30/93
CIVIL ENGINEER

COUNTY SURVEYOR'S CERTIFICATE

THE CORNER RECORD WAS RECEIVED AND EXAMINED AND FILED SECRET BY [Signature] TITLE: REGISTERED PROFESSIONAL ENGINEER
DOCUMENT No. _____
Exp. 3-31-92

