

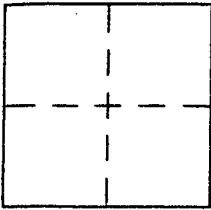
CORNER RECORD

Document Number: A.P.N. 12-093-14

City of SAN RAFAEL

County of MARIN, California

Brief Legal Description Southwest corner, Lot 3, Map of Westwood Unit One, 8 RM 59



CORNER TYPE

Government Corner Control
Meander Property
Rancho Other
Date of Survey April 4, 2005

COORDINATES (Optional)

N. _____
E. _____
Zone _____ NAD27 NAD83
NAD83 Epoch _____
Elev. _____
Vert. Datum: NGVD29 NAVD88
Meas. Units: Metric Imperial

Corner - Left as found Found and tagged Established Reestablished Rebuilt

Identification and type of corner found: Evidence used to identify or procedure used to establish or reestablish the corner:
Found monuments in centerline of Westwood Drive as shown.

A description of the physical condition of the monument as found and as set or reset:
Set 3/4" iron pipe w/tack & tag "LS 3835"

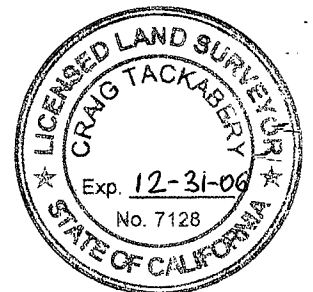
SURVEYOR'S STATEMENT

This Corner Record was prepared by me or under my direction in conformance with the Land Surveyor's Act on April 5 2005
Signed Paul Tanner P.L.S or R.C.E. No. P.L.S. 3835

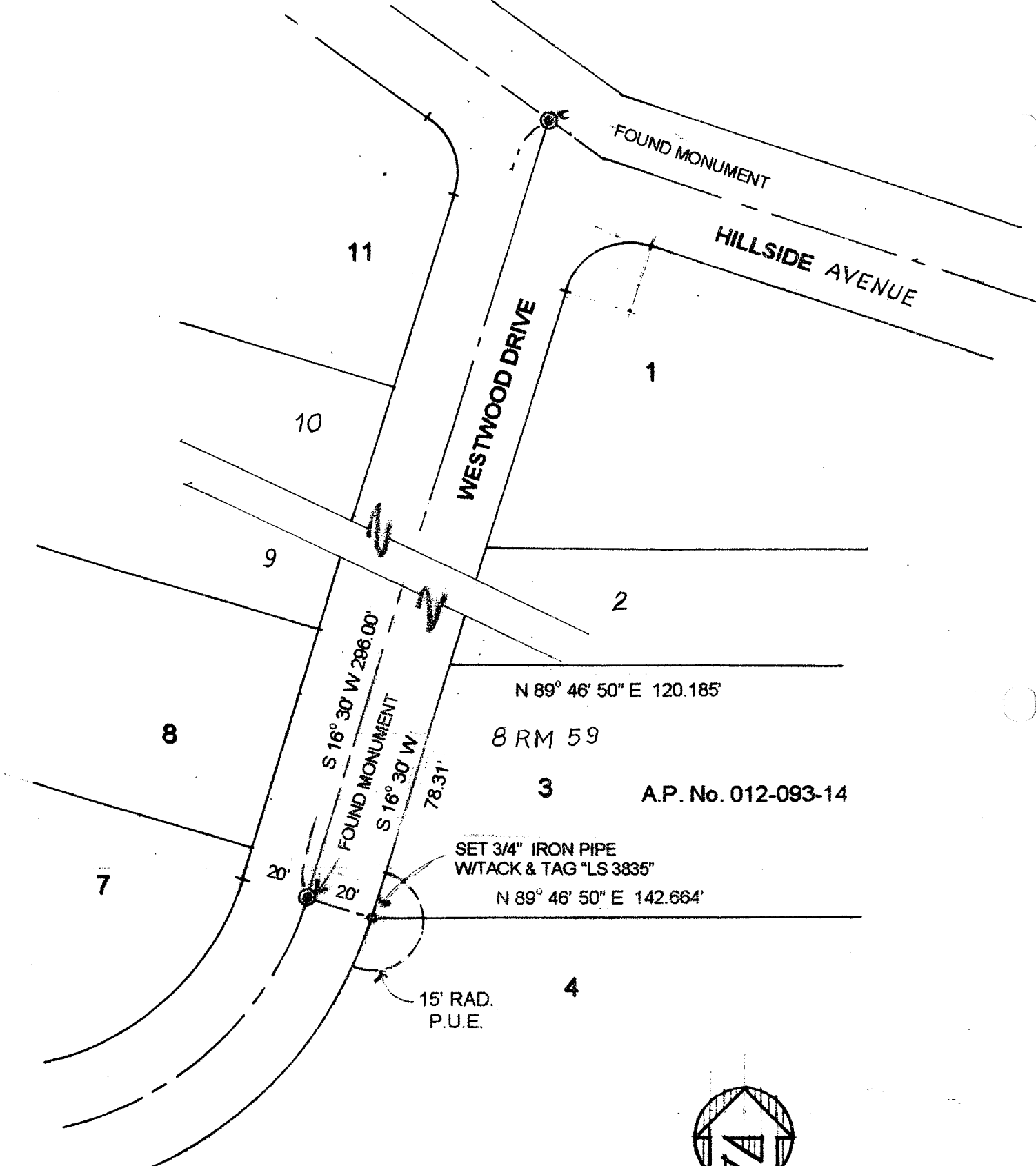


COUNTY SURVEYOR'S STATEMENT

This Corner Record was received APRIL 18, 2005
and examined and filed APRIL 27, 2005
Signed Craig Tackabery P.L.S or R.C.E. No. 7128
Title COUNTY SURVEYOR



County Surveyor's Comment _____



SCALE: 1" = 40'