



JERRICO ASSOCIATES
 SUITE 27
 77 MARK DRIVE
 SAN RAFAEL, CA 94903

A.P. # 12-093-03

6758

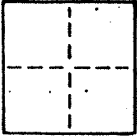
CORNER RECORD

1/3

COUNTY OF Marin T. _____ R. _____ MERIDIAN CALIFORNIA

CORNER TYPE: GOVT. CORNER MEANDER RANCHO CONTROL OTHER

CORNER IDENTIFICATION — DATE OF VISIT _____ 19__



CORNER — LEFT AS FOUND FOUND AND TAGGED REESTABLISHED OBLITERATED CORNER REBUILT

PHYSICAL DESCRIPTION OF CORNER FOUND; EVIDENCE AND METHOD USED TO IDENTIFY OR REESTABLISH

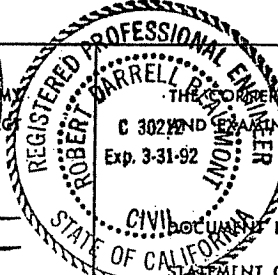
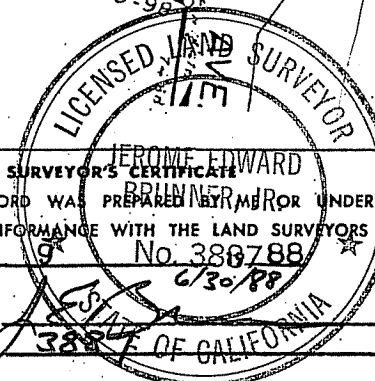
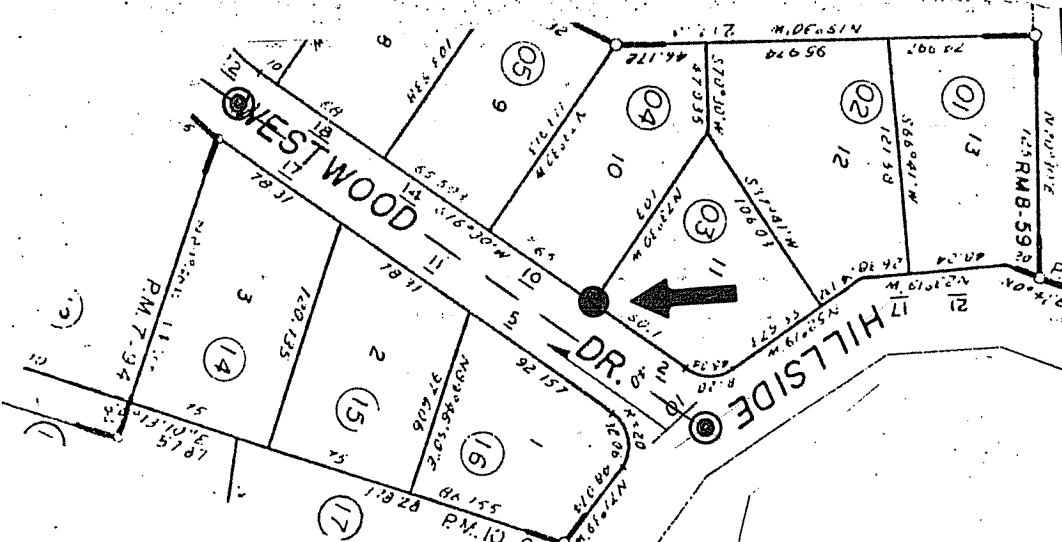
⊙ Found standard monuments as shown. Westwood, Unit One, San Rafael, California. 8 R.M. 59

PHYSICAL DESCRIPTION OF MONUMENTS REBUILT OR PERPETUATED

● Found 1/4" steel pin, set rebar and cap L.S. 3887.

CALIFORNIA COORDINATE SYSTEM ORDER: FIRST SECOND THIRD
 STATIONS USED: NGS (USC & GS) STATE COUNTY OTHER STATION _____ STATION _____
 ZONE _____ ELEVATION _____ NORTHINGS (Y) _____ EASTINGS (X) _____

SKETCH: (Include reference tie or witness points, remarks and topo of area)



SURVEYOR'S CERTIFICATE
 THIS CORNER RECORD WAS PREPARED BY ME OR UNDER
 DIRECTION IN CONFORMANCE WITH THE LAND SURVEYORS
 ON June 9 No. 388788

COUNTY SURVEYOR'S CERTIFICATE
 THIS CORNER RECORD WAS RECEIVED 6/13 1988
 C 302 AND EXAMINED AND FILED 6/13 1988
 Exp. 3-31-92 BY: RB
 TITLE: DR

SIGNED: _____
 L.S. or R.C.E. No. 3887

No. _____

SEAL

STATEMENT ON BACK OF SHEET

YES NO



JERRICO ASSOCIATES
 SUITE 27
 77 MARK DRIVE
 SAN RAFAEL, CA 94903

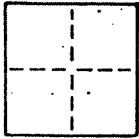
12-093-03

6758

CORNER RECORD

2/3

COUNTY OF Marin T. _____ R. _____ MERIDIAN _____ CALIFORNIA
 CORNER TYPE: GOVT. CORNER MEANDER RANCHO CONTROL OTHER
 CORNER IDENTIFICATION — DATE OF VISIT _____ 19____



CORNER — LEFT AS FOUND FOUND AND TAGGED REESTABLISHED OBLITERATED CORNER REBUILT

PHYSICAL DESCRIPTION OF CORNER FOUND; EVIDENCE AND METHOD USED TO IDENTIFY OR REESTABLISH

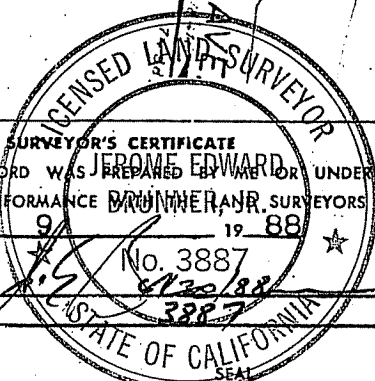
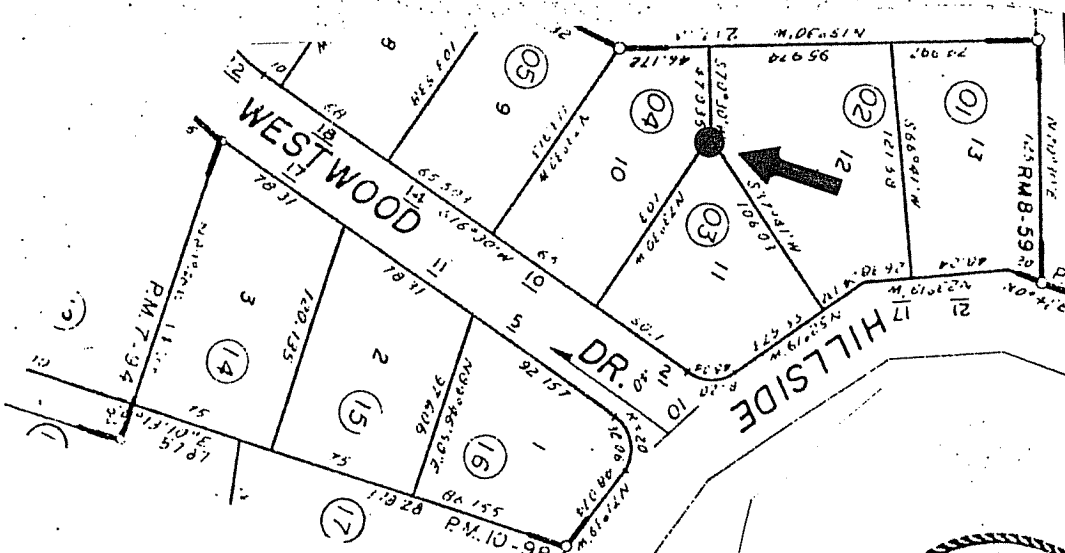
⊙ Found standard monuments as shown. Westwood, Unit One, San Rafael, California. 8 R.M. 59

PHYSICAL DESCRIPTION OF MONUMENTS REBUILT OR PERPETUATED

● Set rebar and tag L.S. 3887.

CALIFORNIA COORDINATE SYSTEM ORDER: FIRST SECOND THIRD
 STATIONS USED: NGS (USC & GS) STATE COUNTY OTHER STATION _____ STATION _____
 ZONE _____ ELEVATION _____ NORTHINGS (Y) _____ EASTINGS (X) _____

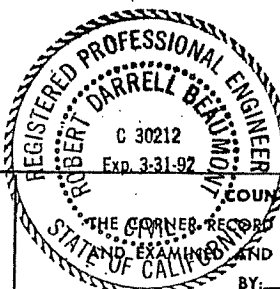
SKETCH: (Include reference tie or witness points, remarks and topo of area)



SURVEYOR'S CERTIFICATE
 THIS CORNER RECORD WAS PREPARED BY ME OR UNDER MY DIRECTION IN CONFORMANCE WITH THE SURVEYORS ACT ON June 9 1988

SIGNED: _____

L.S. or R.G.E. No. _____



COUNTY SURVEYOR'S CERTIFICATE

THE CORNER RECORD WAS RECEIVED 6/12/88 AND EXAMINED AND FILED 6/12/88 1988
 BY: RDS
 TITLE: RCSI

DOCUMENT No. _____

STATEMENT ON BACK OF SHEET

YES NO



JERRICO ASSOCIATES
 SUITE 27
 77 MARK DRIVE
 SAN RAFAEL, CA 94903

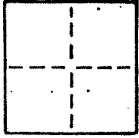
12-093-03

6758

CORNER RECORD

3/3

COUNTY OF Marin T. _____ R. _____ MERIDIAN _____ CALIFORNIA
 CORNER TYPE: GOVT. CORNER MEANDER RANCHO CONTROL OTHER
 CORNER IDENTIFICATION — DATE OF VISIT _____ 19____



CORNER — LEFT AS FOUND FOUND AND TAGGED REESTABLISHED OBLITERATED CORNER REBUILT

PHYSICAL DESCRIPTION OF CORNER FOUND; EVIDENCE AND METHOD USED TO IDENTIFY OR REESTABLISH

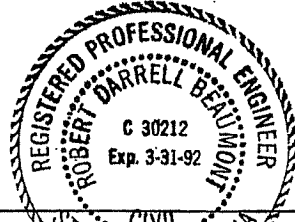
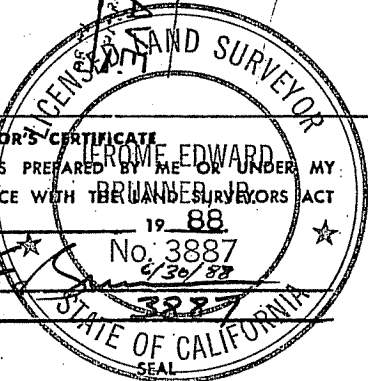
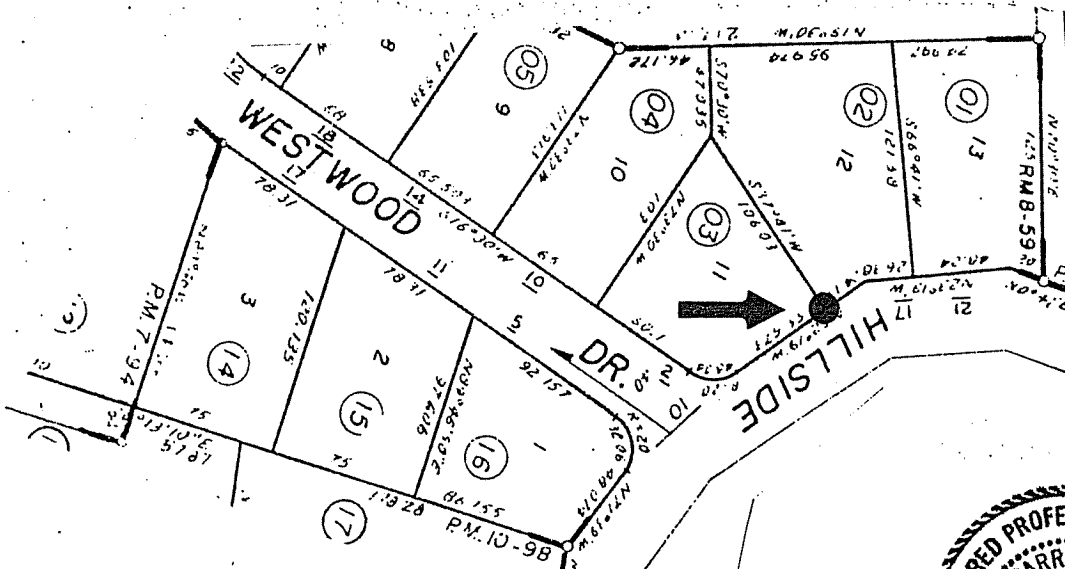
⊙ Found standard monuments as shown. Westwood, Unit One, San Rafael, California. 8 R.M. 59

PHYSICAL DESCRIPTION OF MONUMENTS REBUILT OR PERPETUATED

● Found old I.P. guard, set rebar and tag L.S. 3887.

CALIFORNIA COORDINATE SYSTEM ORDER: FIRST SECOND THIRD
 STATIONS USED: NGS (USC & GS) STATE COUNTY OTHER STATION _____ STATION _____
 ZONE _____ ELEVATION _____ NORTHINGS (Y) _____ EASTINGS (X) _____

SKETCH: (Include reference tie or witness points, remarks and topo of area)



SURVEYOR'S CERTIFICATE
 THIS CORNER RECORD WAS PREPARED BY ME OR UNDER MY DIRECTION IN CONFORMANCE WITH THE LAND SURVEYORS ACT ON June 9 19 88
 SIGNED: [Signature]
 L.S. or R.C.E. No.: 3887

CIVIL ENGINEER'S CERTIFICATE
 THE CORNER RECORD WAS RECEIVED 6/13 19 88
 AND EXAMINED AND FILED 6/13 19 88
 BY: [Signature]
 TITLE: DCS

DOCUMENT No. _____

STATEMENT ON BACK OF SHEET

YES NO