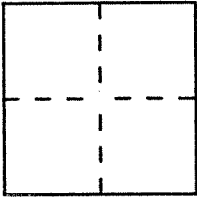


CORNER RECORD

Document Number AP No. 12-081-40

City of San Rafael County of Marin, California

Brief Legal Description Parcel 1, Map of "Lands of Bell Savings and Loan Association, 2282-OR-435" 10PM83



CORNER TYPE

Government Corner Control
Meander Property
Rancho Other
Date of Survey 8/26/94

COORDINATES (Optional)

N. _____
E. _____
Zone _____ Datum _____
Elev. _____

Corner — Left as found Found and tagged Established Reestablished Rebuilt

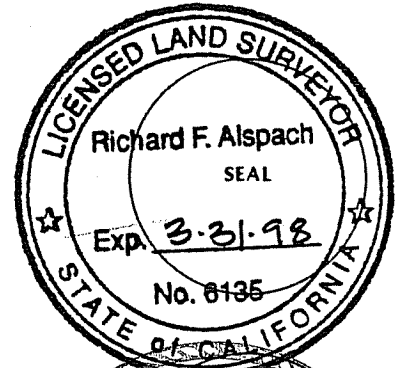
Identification and type of corner found: Evidence used to identify or procedure used to establish or reestablish the corner:
Monumented northerly corners of Parcel 1 per record dimensions
using found original corners as control. (See Page 2)

A description of the physical condition of the monument as found and as set or reset: _____
Looked for 2x2 wooden hubs, not found. Replaced with a 3/4"
iron Pipe with cap "LS6135" and 60d spike and tag "LS6135"

SURVEYOR'S STATEMENT

This Corner Record was prepared by me or under my direction in conformance with the Land Surveyors' Act on August 29 1994.

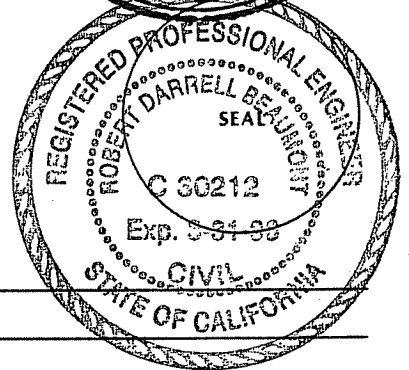
Signed Richard F. Alspach L.S. or R.C.E. Number LS 6135



COUNTY SURVEYOR'S STATEMENT

This Corner Record was received 8-30 1994 and examined and filed 8-31 1994.

Signed RDB Title CLS



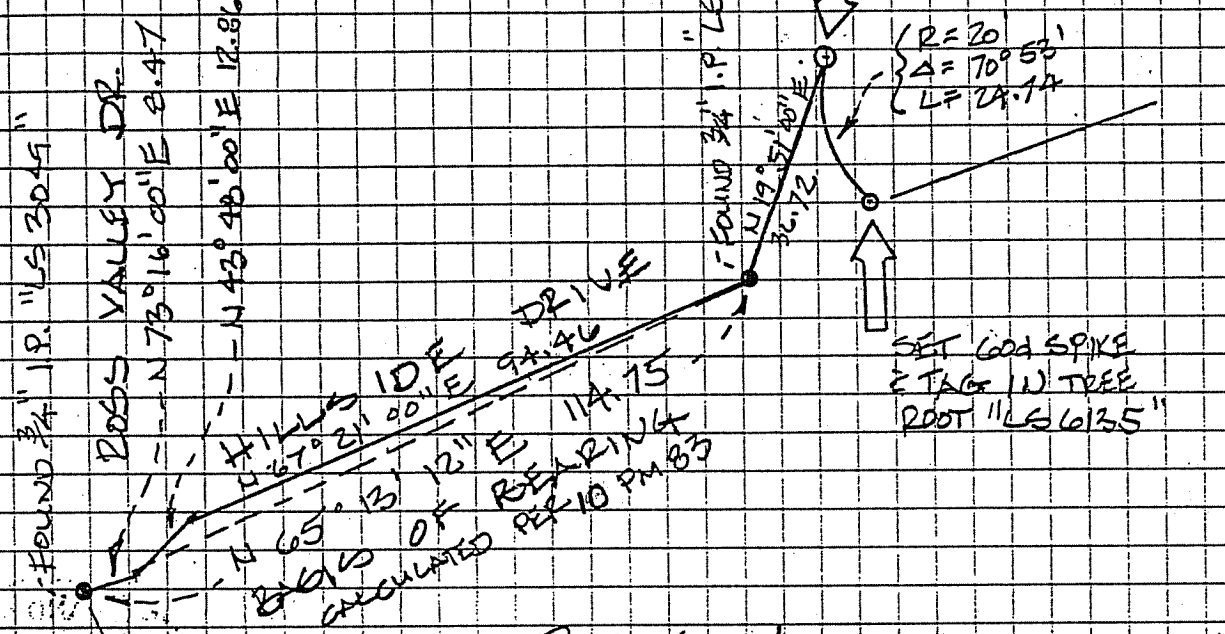
County Surveyor's Comment _____

CC-Plot output, date: 08-29-1994, time: 2:08:49 PM, FILE: SPILL216.CC

PLOT SCALE: 1 inch = 30 feet

NORTH IS ROTATED 0.0000 DEGREES CLOCKWISE.

1" = 30'



POINTS OFF PAPER: NONE

PARCEL 1

10 PM 83