

# CORNER RECORD

Agency Index CR24-019

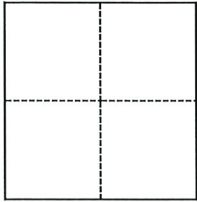
Document Number APN 012-043-04

City of SAN RAFAEL County of MARIN, California

Brief Legal Description LOT NO. 5, MAP OF WEST END ADDITION, SAN RAFAEL, 4 RM 58

### CORNER TYPE

### COORDINATES (Optional)



- Government Corner
- Meander
- Rancho
- Control
- Property
- Other

Date of Survey January 17, 2024

N. \_\_\_\_\_ E. \_\_\_\_\_

Elevation \_\_\_\_\_

Units  Metric  U.S. Survey Foot

Horizontal Datum \_\_\_\_\_

Zone \_\_\_\_\_ Epoch Date \_\_\_\_\_

Vertical Datum \_\_\_\_\_

Complies with Public Resources Code §§8801-8819

Complies with Public Resources Code §§8890-8902

PLS Act Ref.:  8765(d)  8771  8773  Other:

Corner/Monument:  Left as found  Established  Rebuilt  Pre-Construction

Found and tagged  Reestablished  Referenced  Post-Construction

Narrative of corner identified and monument as found, set, reset, replaced, or removed:

See sheet #2 for description(s):

USED FOUND MONUMENTS AS SHOWN AND DELINEATED ON 21 PARCEL MAPS 4 TO RE-ESTABLISH THE NORTHEAST CORNER OF LOT NO. 5, AS SHOWN AND DELINEATED ON 4 RM 58, ALL MARIN COUNTY RECORDS. SEE SHEET 2 OF 2 FOR DETAILS.

### SURVEYOR'S STATEMENT

This Corner Record was prepared by me or under my direction in conformance with

the Professional Land Surveyors' Act on January 25, 2024

Signed Ray C. Carlson P.L.S. or R.C.E. No. P.L.S. 3890



### COUNTY SURVEYOR'S STATEMENT

This Corner Record was received February 07, 2024

and examined and filed February 07, 2024

Signed T.W. Park P.L.S. [REDACTED] No. 8176

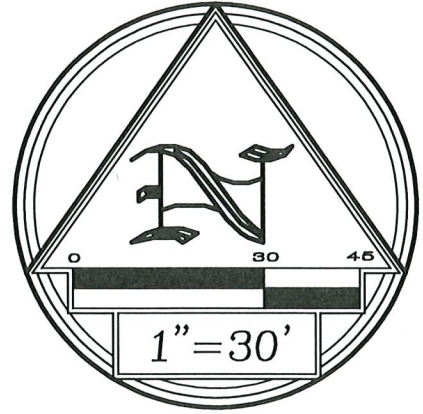
Title County Surveyor

County Surveyor's Comment



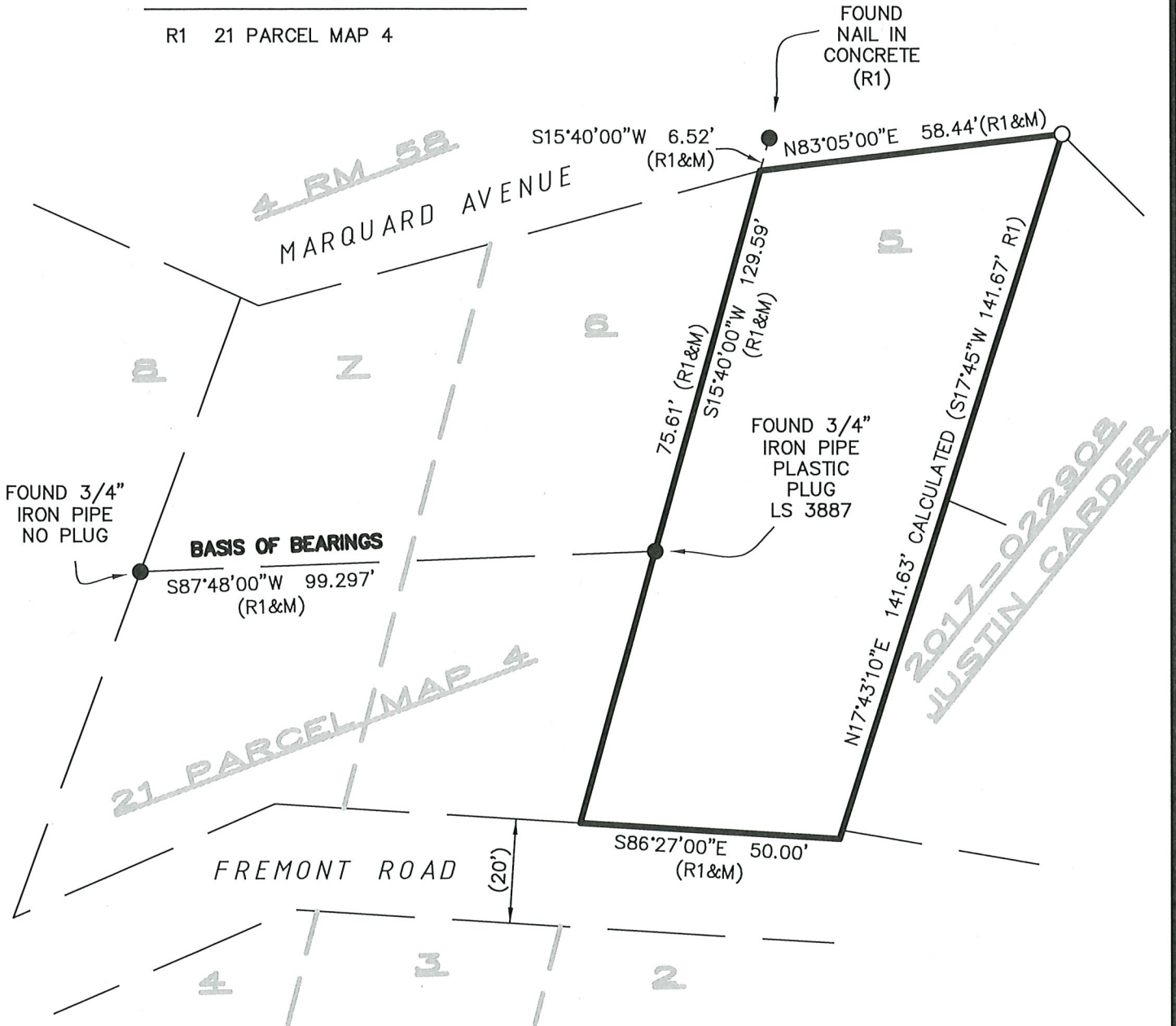
**LEGEND**

- FOUND MONUMENT AS NOTED
- SET 1/2" IRON PIPE, PLASTIC PLUG LS 3890
- TIE LINE
- ADJOINER LINE
- BOUNDARY LINE



**REFERENCES**

R1 21 PARCEL MAP 4



**RAY CARLSON**  
AND ASSOCIATES, INC.  
Mapping for a Better World™

SURVEYING • MAPPING • GIS • CONSULTING  
5331 SKYLANE BLVD SANTA ROSA, CALIFORNIA 95403  
(707) 528-7649 • RCMAPS.COM  
© 2024, Ray Carlson and Associates, Inc.