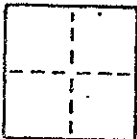


CORNER RECORD

COUNTY OF T. S. MERIDIAN CALIFORNIA

CORNER TYPE: GOVT. CORNER MEANDER RANCHO CONTROL OTHER

CORNER IDENTIFICATION — DATE OF VISIT 19



CORNER — LEFT AS FOUND FOUND AND TAGGED REESTABLISHED OBLITERATED CORNER REBUILT

PHYSICAL DESCRIPTION OF CORNER FOUND; EVIDENCE AND METHOD USED TO IDENTIFY OR REESTABLISH
BASED ON MONUMENTS AS SHOWN:
 LOT 3, "MAP OF WEST END ADDITION," RECORDED IN BOOK 4 RECORD MAPS, PAGE 58, MARIN COUNTY RECORDS.
 A.P. No. 112-041-15 UN 105-A

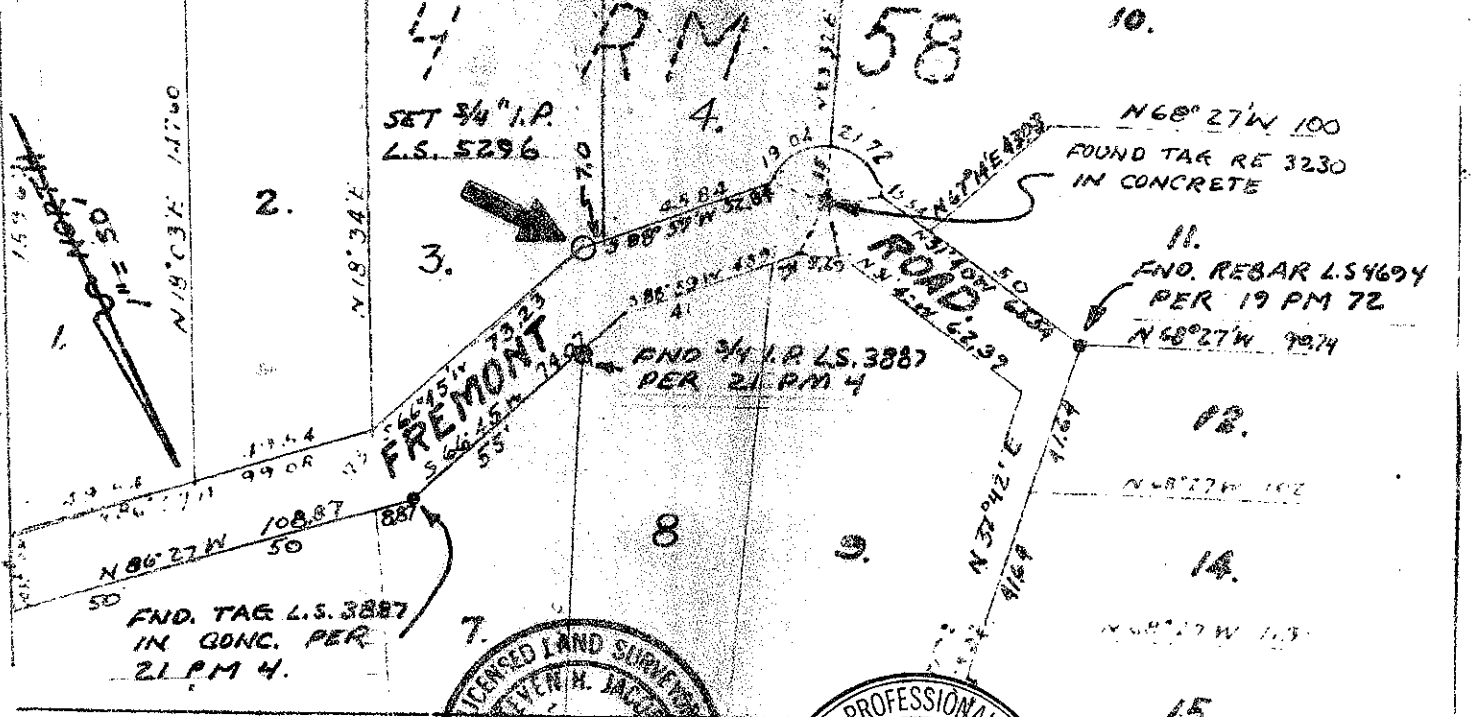
PHYSICAL DESCRIPTION OF MONUMENTS REBUILT OR PERPETUATED
SET 3/4 INCH IRON PIPE TAGGED L.S. 5296.

CALIFORNIA COORDINATE SYSTEM ORDER: FIRST SECOND THIRD

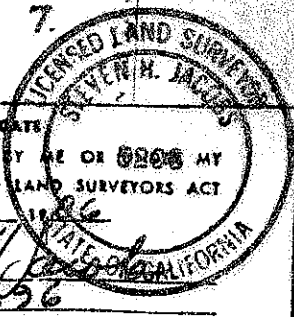
STATIONS USED: NGS (USC & OS) STATE COUNTY OTHER STATION _____ STATION _____

ZONE _____ ELEVATION _____ NORTHINGS (Y) _____ EASTINGS (X) _____

SKETCH: (include reference tie or witness points, remarks and type of area)



SURVEYOR'S CERTIFICATE
 THIS CORNER RECORD WAS PREPARED BY ME OR ~~BY~~ MY
 DIRECTION IN CONFORMANCE WITH THE LAND SURVEYORS ACT
 ON SEPT. 24 1986
 SIGNED: Steven H. Jacobs
 L.S. of R.C.E. No. L.S. 5296



SURVEYOR'S CERTIFICATE
 RECEIVED Sept. 22 1986
 EXAMINED AND APPROVED
 No. 18653 Charles E. Munday
 Exp. 6-30-88: Deputy County Surveyor

