

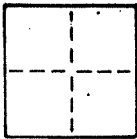
A.P. # 12-031-13

### CORNER RECORD

COUNTY OF MARIN T. \_\_\_\_\_ R. \_\_\_\_\_ MERIDIAN \_\_\_\_\_ CALIFORNIA

CORNER TYPE: GOVT. CORNER  MEANDER  RANCHO  CONTROL  OTHER

CORNER IDENTIFICATION — DATE OF VISIT \_\_\_\_\_ 19\_\_\_\_



NOT APPLICABLE

CORNER — LEFT AS FOUND  FOUND AND TAGGED  REESTABLISHED OBLITERATED CORNER  REBUILT

PHYSICAL DESCRIPTION OF CORNER FOUND; EVIDENCE AND METHOD USED TO IDENTIFY OR REESTABLISH

NOT APPLICABLE

PHYSICAL DESCRIPTION OF MONUMENTS, REBUILT OR PERPETUATED

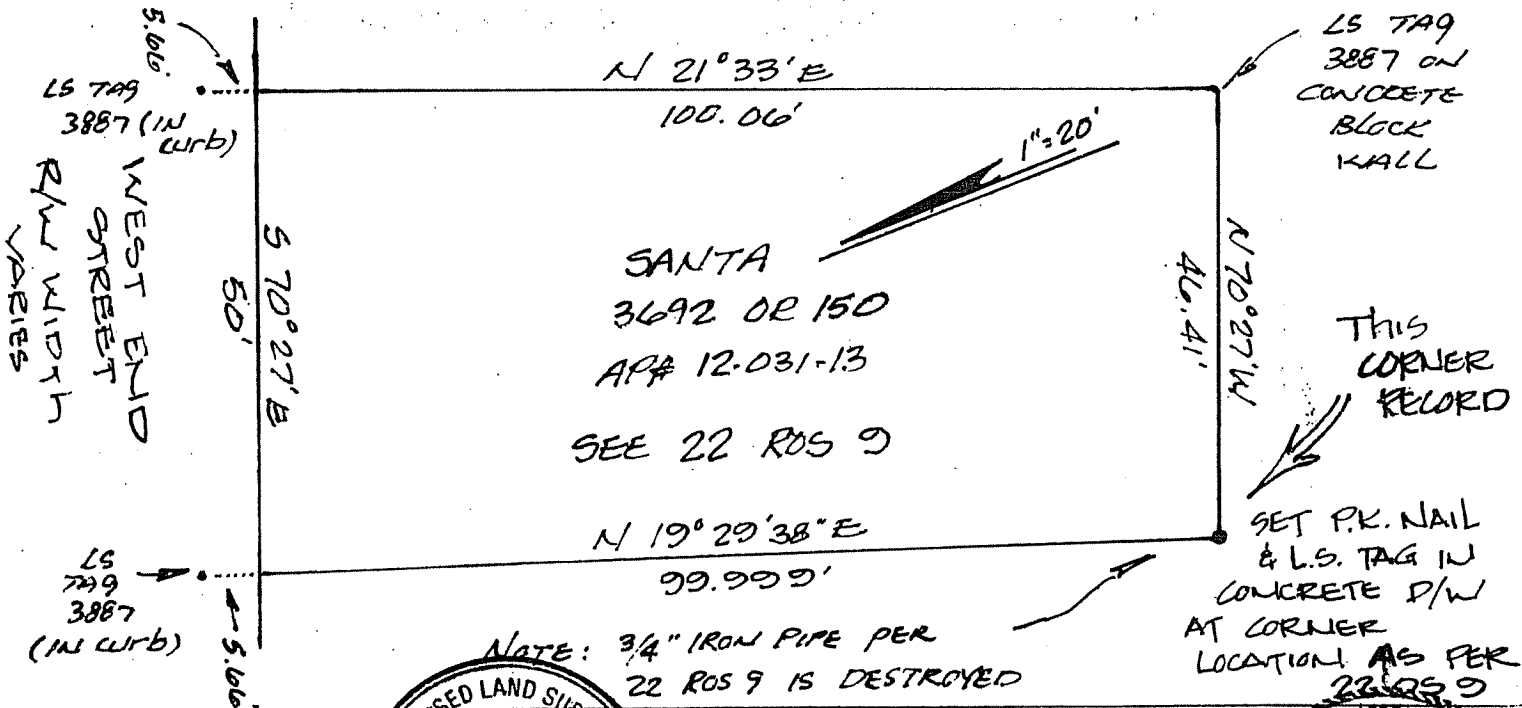
SET P.K. NAIL @ THE SOUTHWESTERLY CORNER OF SANTA PARCEL AS SAID CORNER IS DEPICTED UPON 22 ROS 9 (JERRICO ASSOC.) ORIGINAL CORNER SET PER MAP DESTROYED. BASIS OF BEARING AS PER 22 ROS 9.

CALIFORNIA COORDINATE SYSTEM ORDER: FIRST  SECOND  THIRD

STATIONS USED: NGS (USC & GS)  STATE  COUNTY  OTHER  STATION \_\_\_\_\_ STATION \_\_\_\_\_

ZONE \_\_\_\_\_ ELEVATION \_\_\_\_\_ NORTHINGS (Y) \_\_\_\_\_ EASTINGS (X) \_\_\_\_\_

SKETCH: (Include reference tie or witness points, remarks and topo of area) SEE 22 ROS 9



SURVEYOR'S CERTIFICATE

THIS CORNER RECORD WAS PREPARED BY ME OR UNDER MY DIRECTION IN CONFORMANCE WITH THE LAND SURVEYORS ACT ON JAN 18 1988 No. 5379

SIGNED: [Signature]

L.S. or R.C.E. No.: 2614317

STATE OF CALIFORNIA

SEAL

COUNTY SURVEYOR'S CERTIFICATE

THE CORNER RECORD WAS RECEIVED AND EXAMINED AND FILED 1-12-88 1988

BY: RDR

TITLE: Dep. Co. Surveyor

DOCUMENT No. \_\_\_\_\_

STATEMENT ON BACK OF SHEET EX. 3-31

PROFESSIONAL ENGINEER BEAUMONT C 30212

CIVIL STATE OF CALIFORNIA