

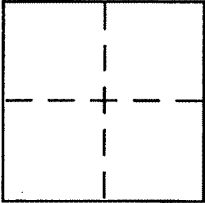
CORNER RECORD

Document Number APN 012-0110-16

City of SAN RAFAEL

County of MARIN, California

Brief Legal Description LOT 95 PER 2002/ MAPS/ 213



CORNER TYPE

Government Corner Control
Meander Property
Rancho Other
Date of Survey 11-22-02

COORDINATES (Optional)

N. _____
E. _____
Zone _____ NAD27 NAD83
NAD83 Epoch _____
Elev. _____
Vert. Datum: NGVD29 NAVD88
Meas. Units: Metric Imperial

Corner - Left as found Found and tagged Established Reestablished Rebuilt

Identification and type of corner found: Evidence used to identify or procedure used to establish or reestablish the corner:

SEE PAGE 2

A description of the physical condition of the monument as found and as set or reset:

SEE PAGE 2

SURVEYOR'S STATEMENT

This Corner Record was prepared by me or under my direction in conformance with the Land Surveyor's Act on Nov 25 2002

Signed [Signature] P.L.S or R.G.E. No. 6784



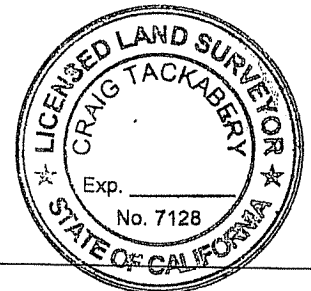
COUNTY SURVEYOR'S STATEMENT

This Corner Record was received NOVEMBER 25, 2002

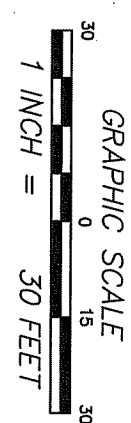
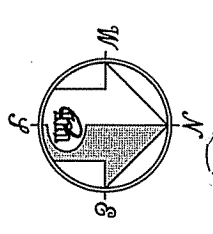
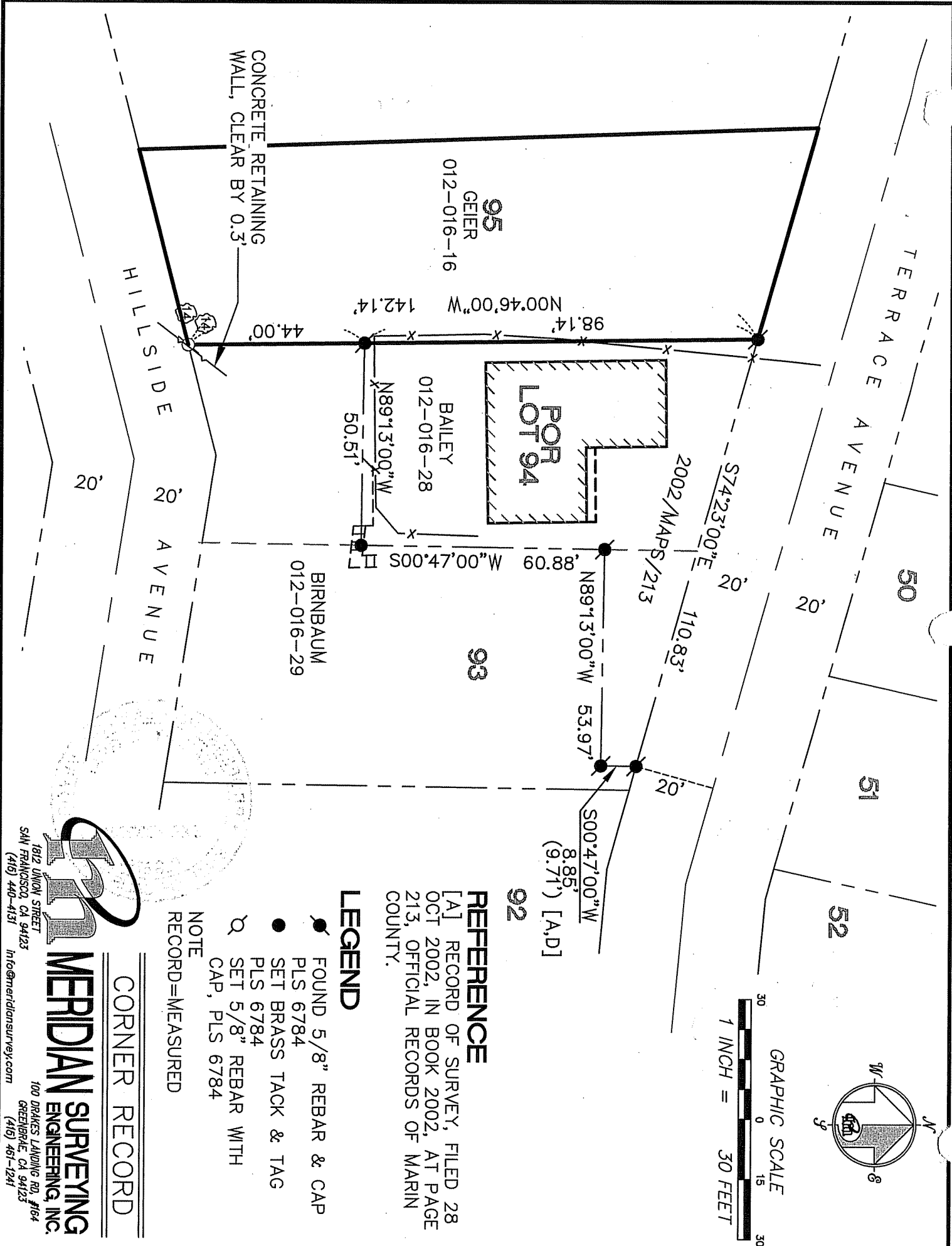
and examined and filed NOVEMBER 27, 2002

Signed [Signature] P.L.S or R.G.E. No. 7128

Title DEPUTY



County Surveyor's Comment _____



92
 500'47'00" W
 8.85'
 (9.71') [A,D]

REFERENCE
 [A] RECORD OF SURVEY, FILED 28
 OCT 2002, IN BOOK 2002, AT PAGE
 213, OFFICIAL RECORDS OF MARIN
 COUNTY.

LEGEND

- FOUND 5/8" REBAR & CAP
 PLS 6784
 - SET BRASS TACK & TAG
 PLS 6784
 - SET 5/8" REBAR WITH
 CAP, PLS 6784
- NOTE
 RECORD=MEASURED

CORNER RECORD

**MERIDIAN SURVEYING
 ENGINEERING, INC.**
 1812 UNION STREET
 SAN FRANCISCO, CA 94123
 (415) 440-4131
 info@meridiansurvey.com

100 DRAKES LANDING RD, #164
 GREENBRAE, CA 94123
 (415) 451-1241