

Rush Creek Road & Trail Improvements



FIRE ROAD AND TRAIL USES

FIRE ROAD on leash
Hikers/Bikes/Horses

TRAIL on leash
Hikers/Bikes/Horses

TRAIL on leash
Hikers/Horses

TRAIL on leash
Hikers/Bikes


TRAIL on leash
Hikers Only

* The North Levee Trail is often closed due to tidal flooding and does not provide through access at these times. Be prepared to take an alternate route.

SYMBOLS

- Marin County Open Space District Preserve
- Other Public Lands
- Multiuse Pathway
- Trail (Non-MCOSD)
- Distance (miles)
- Gates
- Creeks & Streams
- Water Tank
- Public Transit

PROJECT HISTORY

- 
- 2017** Identified in Region 4 designation
 - 2017-20** Stakeholder engagement and project planning
 - 2020-21** Prepare draft CEQA document for public review
 - 2021** Implement if proposed project is approved

Purpose of Proposed Project

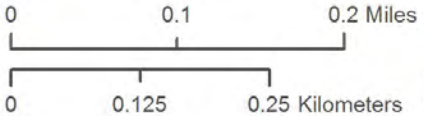
- Reduce the environmental impacts of the existing trail system
- Create a sustainable trail network
- Improve the visitor experience for all trail users
- Create an equestrian designated trail connection to the Horse Arena



Vegetation Assessment

Published Trails

-  published trails
-  other trails
-  (Blue Oak - Valley Oak hybrids) Mapping Unit
-  Black Oak Alliance
-  California Bay (pure)
-  California Bay - Coast Live Oak
-  Coast Live Oak / (Grass-Poison Oak)
-  Coast Live Oak Alliance
-  Coyote Brush - Mixed Shrub / Grass
-  Coyote Brush / Annual or Perennial Grasslands
-  Estuarine Marsh Habitats (Pickleweed, Saltgrass, Alkali Heath, Jaumea)
-  Eucalyptus
-  Grasslands on well-developed soils (generally dense bio-mass)
-  Lower Elevation Mixed Broadleaf Mapping Unit
-  Mixed Willow Mapping Unit (Arroyo Willow, Red Willow, and Yellow Willow Alliances)
-  Tall Temperate Annual Graminoids
-  Temporarily flooded or saturated Meadow Edge
-  Tidally Flooded Grasslands & Forbs
-  Undifferentiated Marsh (cattail, bulrush, other scirpus spp.)



Wildlife Assessments

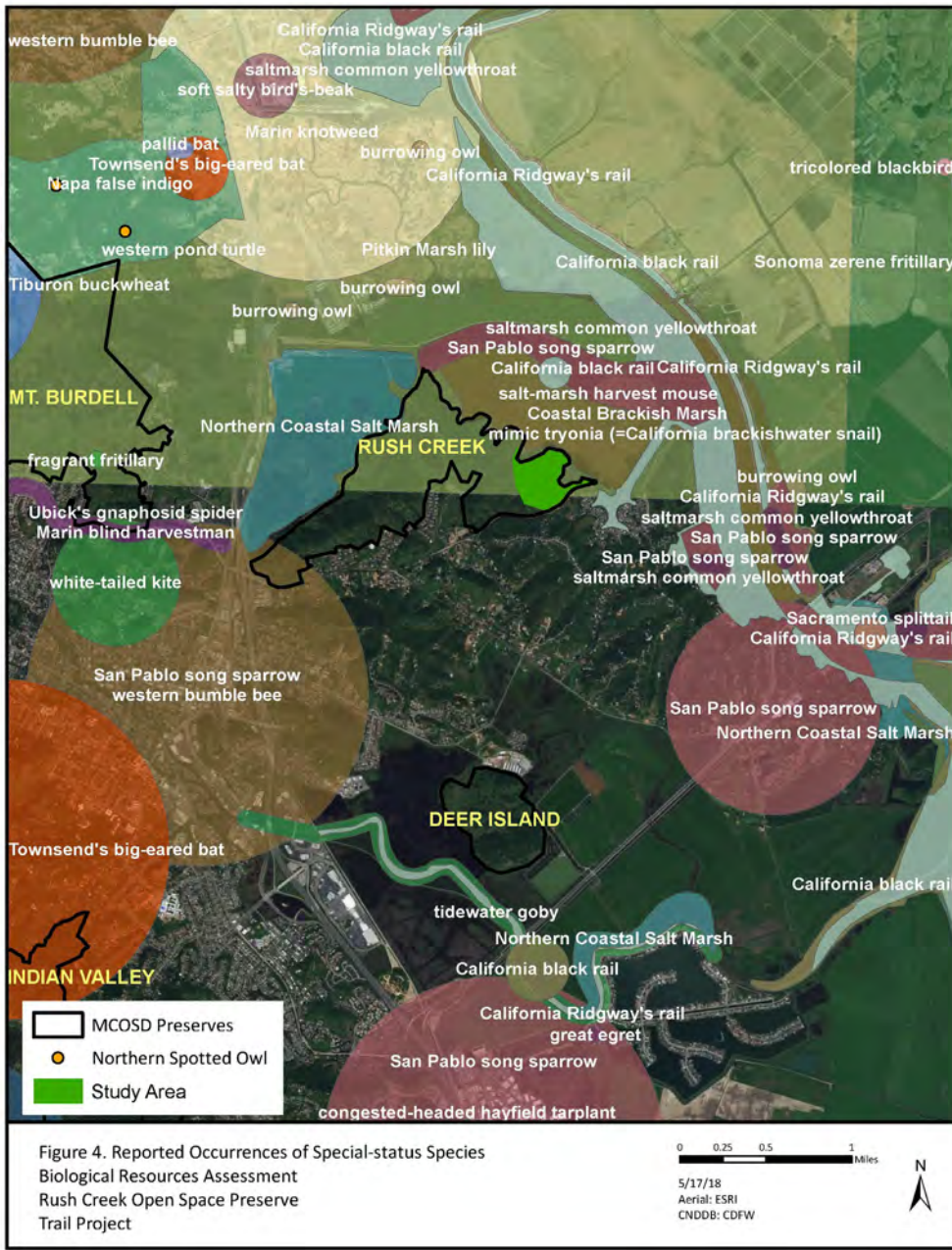


Figure 4. Reported Occurrences of Special-status Species
 Biological Resources Assessment
 Rush Creek Open Space Preserve
 Trail Project

Stakeholder Discussions

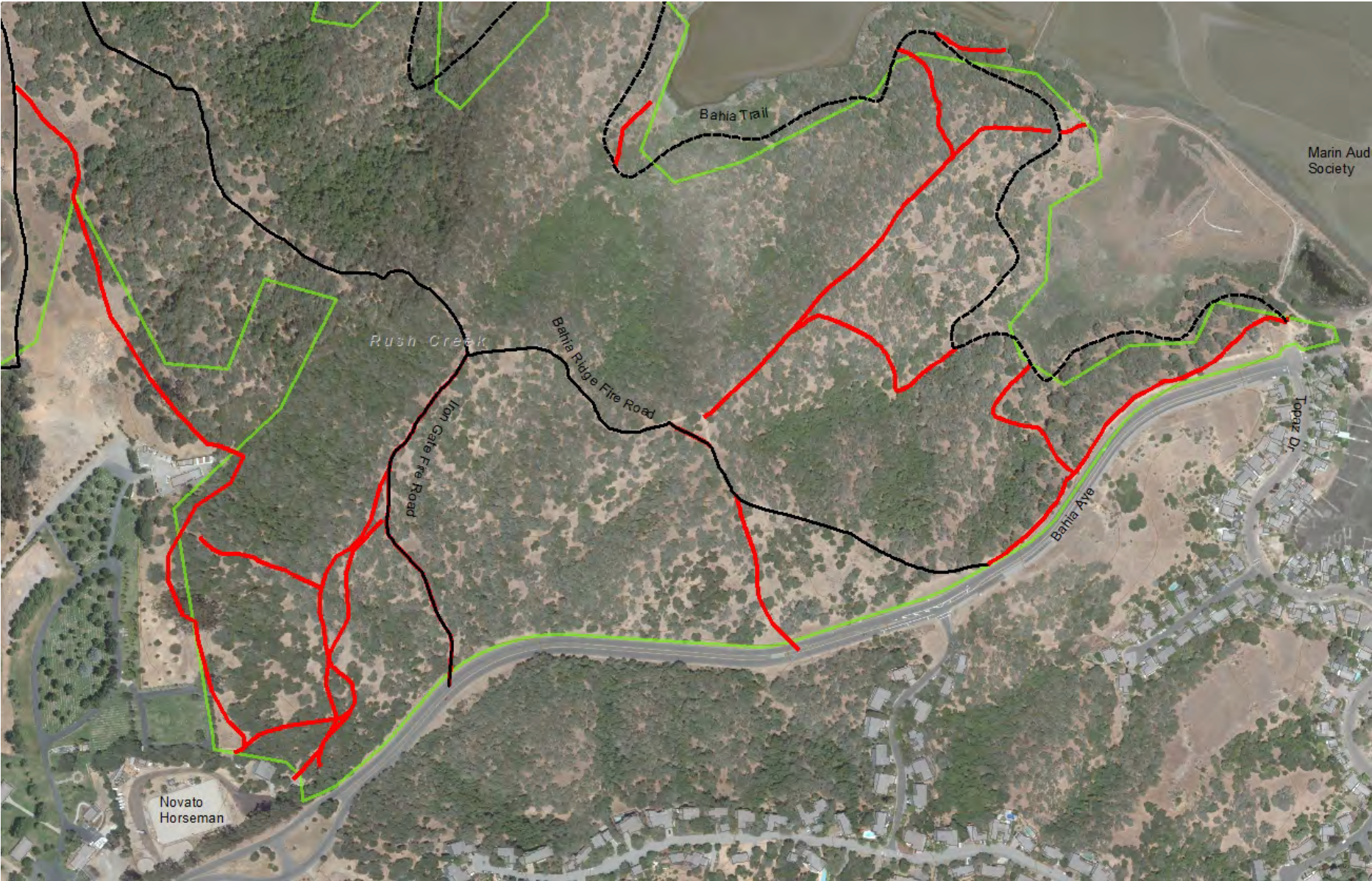
- Reduce the environmental impact of the road and trail system
- Improve visitor access
- Significant wetland habitat
- Importance of Blue Oak forest
- Protect the cultural and natural resources of the site
- Maintain Emergency vehicle access



Rush Creek – Designated Trails



Rush Creek – Existing Trails



Rush Creek – Proposed Project



Berm Trail – Upgraded to Hiking Only



Blue Oak Trail – Re-aligned for multiuse



Iron Gate Fire Road – Abandon Road Segment and Restore Habitat



Iron Gate Fire Road – Convert from Road to Trail



Horseman Trail – Designate New Trail for Equestrians and Hikers

