

- P A S S P O R T -

WELCOME!

Thank you for joining us.

This handout is a guide to the information displayed this evening, highlighting project goals and project descriptions.

PURPOSE OF THIS OPEN HOUSE

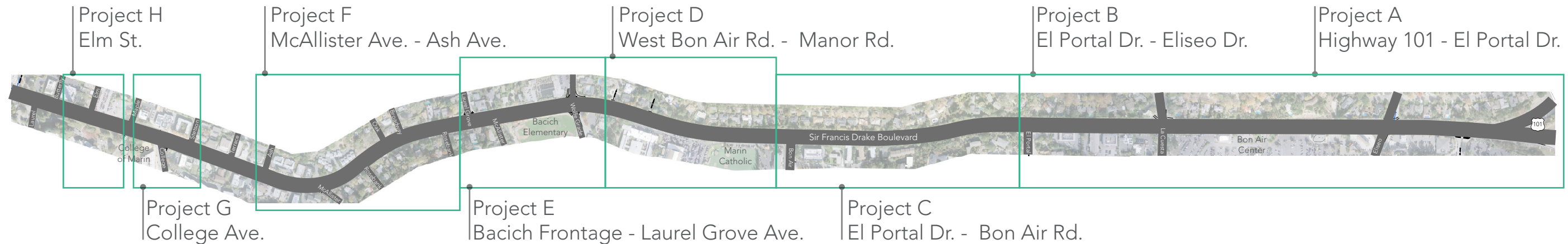
Community input is essential to this rehabilitation project. Tonight, like at the previous community workshops, the County and consultant team seek your feedback on the concepts proposed to reduce congestion and delay, improve safety, and enhance Key Routes to School. We invite you to visit each station to see the specific street layout and proposed traffic operations components that help achieve these goals. Take as much time as you like and talk to us, we are here to answer your questions.

OPEN HOUSE STATIONS

- 1 Welcome + Orientation + Base Project
- 2 Project A + B
- 3 Project C
- 4 Project D
- 5 Project E
- 6 Project F + G + H

OPPORTUNITIES FOR FURTHER COMMUNITY INPUT

- ➔ Please provide your input on the attached worksheet
- ➔ Provide comments by email to:
sfdrakeimprovements@MarinCounty.org
- ➔ Attend future workshops



PROJECT DESCRIPTIONS

- 1 Base Project:** *Highway 101 - El Portal Drive*
Maintenance projects: pavement, guardrail updates, striping, MMWD pipeline, Wolfe Grade intersection, conduits for adaptive signals
- 2 Project A:** *Highway 101 - El Portal Drive*
Improve congestion relief through intersection improvements and third lane eastbound.
- 2 Project B:** *El Portal Drive - Eliseo Drive*
Widen sidewalk on the north side of Sir Francis Drake
- 3 Project C:** *El Portal Drive - Bon Air Road*
Shift median and lanes to widen sidewalk on the north side of Sir Francis Drake Boulevard
- 4 Project D:** *West Bon Air Road - Manor Road*
Improve visibility for pedestrian crossings and widen sidewalk
- 5 Project E:** *Bacich Frontage - Laurel Grove Avenue*
Improve pedestrian safety by creating wider sidewalks and standardizing intersections
- 6 Project F:** *McAllister Avenue - Ash Avenue*
Enhance pedestrian crossings and improve vehicular movements
- 6 Project G:** *College Avenue*
Congestion relief and pedestrian safety efforts
- 6 Project H:** *Elm Avenue*
Improve transit conditions by relocating a bus shelter to encourage safe crossing by pedestrians and enhance existing crossing zones

EXERCISE DESCRIPTION

Each project contains a prioritization exercise with a map, description, and cost figure for that project. The base project includes mandatory components which will be constructed. The dots you have been given reflect the available remaining budget for discretionary project components (Projects A-H) and you are asked to allocate your dots to those projects most important to you. The goal of this exercise is to provide input to the County and design team on what projects are most important based on the funding available. Team members will be at each station to help answer any questions you might have.

NEXT STEPS

- Prepare a recommended project scope within the available budget, considering the priorities from tonight's open house for guidance
- Finalize the Environmental Impact Report
- Board of Supervisor's public hearing on the Environmental Impact Report and a final project
- Prepare final design plans for construction
- Continue to seek funds for remaining projects not included in the final project due to budget limitations

KEY DATES

- Spring 2018: Certify EIR & adopt final project
- 2018-2019: Final Project Design
- 2019-2020: Project construction (2 spring/summer periods)

Thank you attending the open house. We look forward to hearing your thoughts!