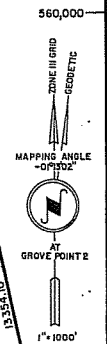
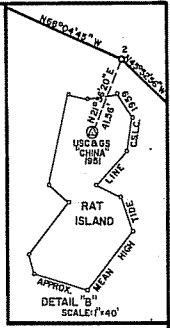
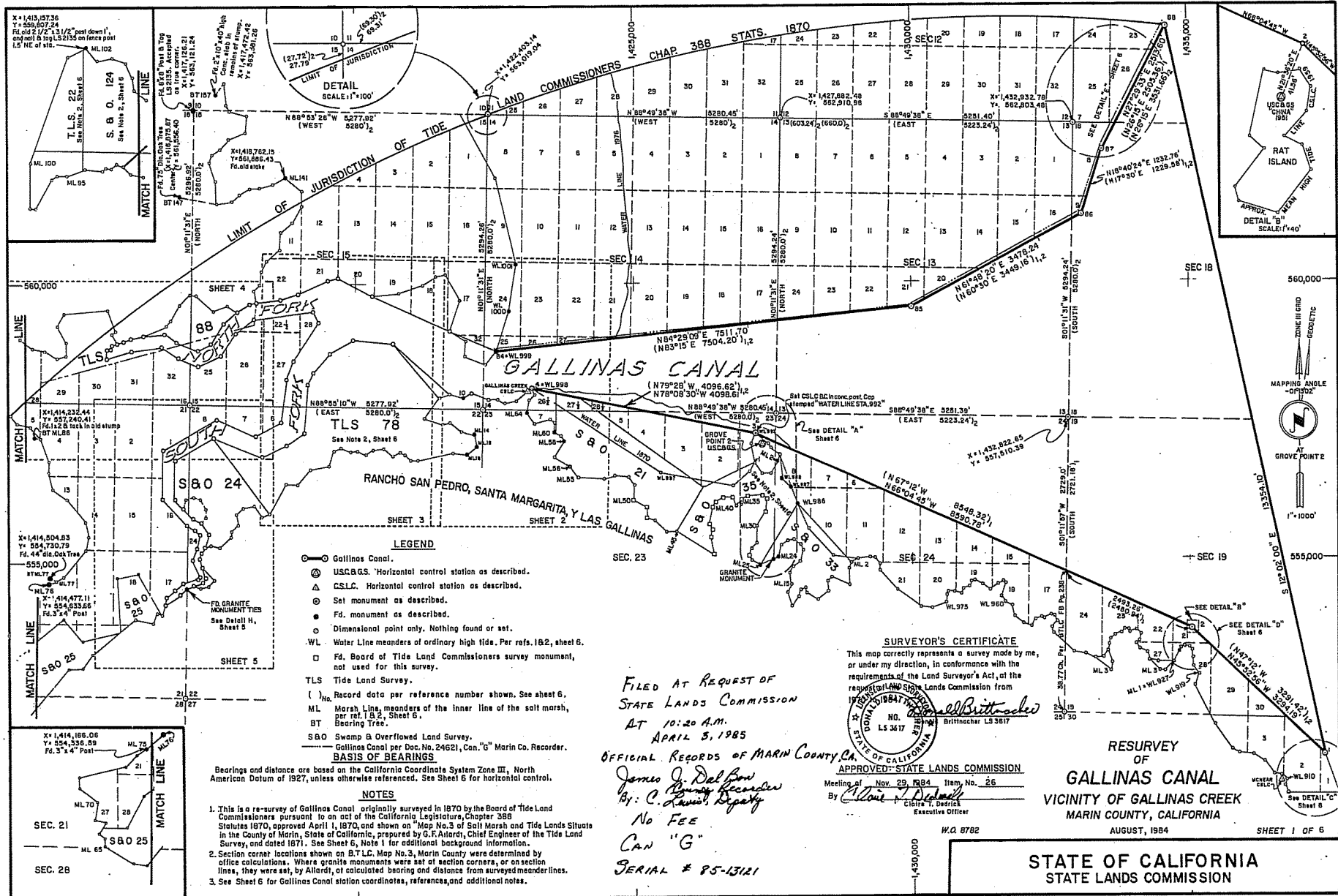


CAN "G"



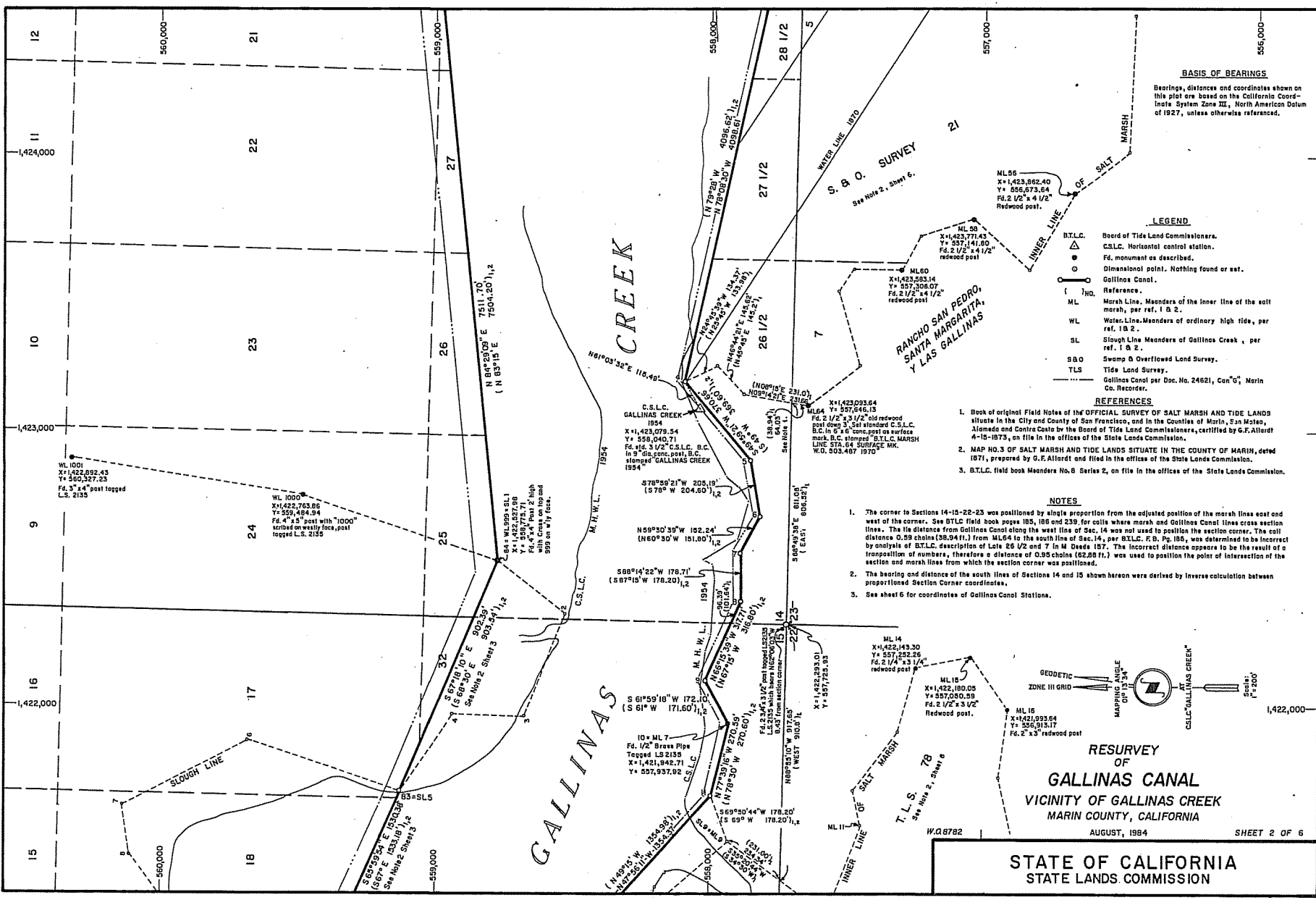
- LEGEND**
- Gallinas Canal.
  - ⊙ USCGS. Horizontal control station as described.
  - △ CSLC. Horizontal control station as described.
  - ⊙ Set monument as described.
  - Fd. monument as described.
  - Dimensional point only. Nothing found or set.
  - WL Water Line meanders of ordinary high tide. Per refs. 1&2, sheet 6.
  - Fd. Board of Tide Land Commissioners survey monument, not used for this survey.
  - TLS Tide Land Survey.
  - ( ) No. Record data per reference number shown. See sheet 6.
  - ML Marsh Line, meanders of the inner line of the salt marsh, per ref. 1, 3, 4, Sheet 6.
  - BT Bearing Tree.
  - S&O Swamp & Overflowed Land Survey.
  - Gallinas Canal per Doc. No. 24621, Can. "G" Marin Co. Recorder.
- NOTES**
- This is a re-survey of Gallinas Canal originally surveyed in 1870 by the Board of Tide Land Commissioners pursuant to an act of the California Legislature, Chapter 388 Statutes 1870, approved April 1, 1870, and shown on "Map No. 3 of Salt Marsh and Tide Lands Situate in the County of Marin, State of California, prepared by G.F. Aitard, Chief Engineer of the Tide Land Survey, and dated 1871. See Sheet 6, Note 1 for additional background information.
  - Section corner localities shown on B.T.L.C. Map No. 3, Marin County were determined by office calculations. Where granite monuments were set at section corners, or on section lines, they were set, by Aitard, at calculated bearing and distance from surveyed meander lines.
  - See Sheet 6 for Gallinas Canal station coordinates, references, and additional notes.

FILED AT REQUEST OF  
STATE LANDS COMMISSION  
AT 10:20 A.M.  
APRIL 3, 1985  
OFFICIAL RECORDS OF MARIN COUNTY, CA.  
James J. Delbow  
By: C. L. ... Deputy  
No FEE  
CAN "G"  
SERIAL # 95-13121

**SURVEYOR'S CERTIFICATE**  
This map correctly represents a survey made by me, or under my direction, in conformance with the requirements of the Land Surveyor's Act, at the request of the State Lands Commission from  
*James J. Delbow*  
NO. 15317  
LS 3617  
Britt Hooper LS 3617  
APPROVED: STATE LANDS COMMISSION  
Meeting of Nov. 29, 1984 Item No. 26  
By: *Clare T. Dwyer*  
Clara T. Dwyer  
Executive Officer

RESURVEY  
OF  
GALLINAS CANAL  
VICINITY OF GALLINAS CREEK  
MARIN COUNTY, CALIFORNIA  
AUGUST, 1984

W.A. 8782  
1:430,000  
STATE OF CALIFORNIA  
STATE LANDS COMMISSION  
SHEET 1 OF 6



**BASIS OF BEARINGS**  
Bearings, distances and coordinates shown on this plot are based on the California Coordinate System Zone III, North American Datum of 1927, unless otherwise referenced.

- LEGEND**
- BTLC. Board of Tide Land Commissioners.
  - C.S.L.C. Horizontal control station.
  - Fd. monument as described.
  - Dimensional point. Nothing found or est.
  - Gallinas Canal.
  - ( ) NO. Reference.
  - ML Marsh Line. Meanders of the inner line of the salt marsh, per ref. 1 & 2.
  - WL Water Line. Meanders of ordinary high tide, per ref. 1 & 2.
  - SL Slough Line. Meanders of Gallinas Creek, per ref. 1 & 2.
  - S&O Swamp & Overflowed Land Survey.
  - TLS Tide Land Survey.
  - Gallinas Canal per Doc. No. 24621, Can "G", Marin Co. Recorder.

**REFERENCES**

1. Book of original Field Notes of the OFFICIAL SURVEY OF SALT MARSH AND TIDE LANDS situated in the City and County of San Francisco, and in the Counties of Marin, San Mateo, Alameda and Contra Costa by the Board of Tide Land Commissioners, certified by G.F. Allard 4-15-1873, on file in the offices of the State Lands Commission.
2. MAP NO. 3 OF SALT MARSH AND TIDE LANDS SITUATE IN THE COUNTY OF MARIN, dated 1871, prepared by G.F. Allard and filed in the offices of the State Lands Commission.
3. BTLC. field book Meanders No. 8 Series 2, on file in the offices of the State Lands Commission.

**NOTES**

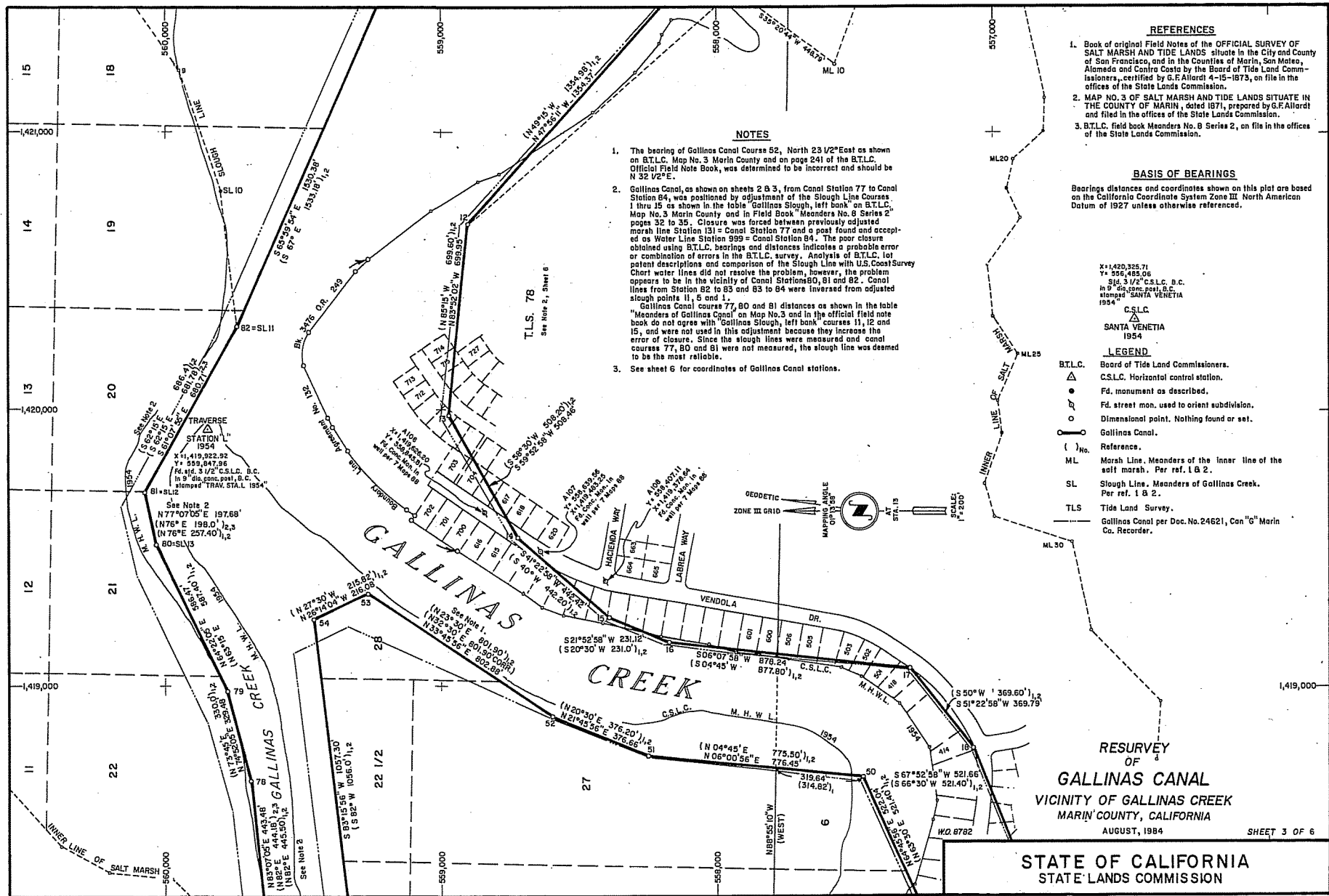
1. The corner to Sections 14-15-22-23 was positioned by single proportion from the adjusted position of the marsh lines east and west of the corner. See BTLC field book pages 185, 186 and 239, for calls where marsh and Gallinas Canal lines cross section lines. The tie distance from Gallinas Canal along the west line of Sec. 14 was not used to position the section corner. The call distance 0.59 chains (50.94 ft.) from ML64 to the south line of Sec. 14, per BTLC. F. B. Pg. 185, was determined to be incorrect by analysis of BTLC. description of Lots 26 1/2 and 7 in M. Deeds 187. The incorrect distance appears to be the result of a transposition of numbers, therefore a distance of 0.85 chains (62.88 ft.) was used to position the point of intersection of the section and marsh lines from which the section corner was positioned.
2. The bearing and distance of the south lines of Sections 14 and 15 shown hereon were derived by inverse calculation between proportioned Section Corner coordinates.
3. See sheet 5 for coordinates of Gallinas Canal Stations.

**RESURVEY OF GALLINAS CANAL VICINITY OF GALLINAS CREEK MARIN COUNTY, CALIFORNIA**

AUGUST, 1984 SHEET 2 OF 6

**STATE OF CALIFORNIA STATE LANDS COMMISSION**

CAN "G"



**NOTES**

- The bearing of Gallinas Canal Course 52, North 23 1/2° East as shown on B.T.L.C. Map No. 3 Marin County and on page 241 of the B.T.L.C. Official Field Note Book, was determined to be incorrect and should be N 32 1/2° E.
- Gallinas Canal, as shown on sheets 2 B 3, from Canal Station 77 to Canal Station 84, was positioned by adjustment of the Slough Line Courses 1 thru 15 as shown in the table "Gallinas Slough, left bank" on B.T.L.C. Map No. 3 Marin County and in Field Book "Meanders No. 8 Series 2" pages 32 to 35. Closure was forced between previously adjusted marsh line Station 131 = Canal Station 77 and a post found and accepted as Water Line Station 999 = Canal Station 84. The poor closure obtained using B.T.L.C. bearings and distances indicates a probable error or combination of errors in the B.T.L.C. survey. Analysis of B.T.L.C. lot patent descriptions and comparison of the Slough Line with U.S. Coast Survey Chart water lines did not resolve the problem, however, the problem appears to be in the vicinity of Canal Stations 80, 81 and 82. Canal lines from Station 82 to 83 and 83 to 84 were inverted from adjusted slough points 11, 5 and 1. Gallinas Canal courses 77, 80 and 81 distances as shown in the table "Meanders of Gallinas Canal" on Map No. 3 and in the official field note book do not agree with "Gallinas Slough, left bank" courses 11, 12 and 15, and were not used in this adjustment because they increase the error of closure. Since the slough lines were measured and canal courses 77, 80 and 81 were not measured, the slough line was deemed to be the most reliable.
- See sheet 6 for coordinates of Gallinas Canal stations.

**REFERENCES**

- Book of original Field Notes of the OFFICIAL SURVEY OF SALT MARSH AND TIDE LANDS situate in the City and County of San Francisco, and in the Counties of Marin, San Mateo, Alameda and Contra Costa by the Board of Tide Land Commissioners, certified by G.F. Allard 4-15-1873, on file in the offices of the State Lands Commission.
- MAP NO. 3 OF SALT MARSH AND TIDE LANDS SITUATE IN THE COUNTY OF MARIN, dated 1871, prepared by G.F. Allard and filed in the offices of the State Lands Commission.
- B.T.L.C. field book Meanders No. 8 Series 2, on file in the offices of the State Lands Commission.

**BASIS OF BEARINGS**

Bearings distances and coordinates shown on this plat are based on the California Coordinate System Zone III North American Datum of 1927 unless otherwise referenced.

X=1,420,325.71  
Y=556,483.06  
1/4" = 3 1/2" C.S.L.C. B.C.  
1/8" = 68.282 feet B.C.  
1/16" = 34.141 feet B.C.  
1954  
C.S.L.C.  
SANTA VENETIA  
1954

**LEGEND**

- B.T.L.C. Board of Tide Land Commissioners.
- C.S.L.C. Horizontal control station.
- Fd. monument as described.
- Fd. street mon. used to orient subdivision.
- Dimensional point. Nothing found or set.
- Gallinas Canal.
- ( ) No. Reference.
- ML Marsh Line. Meanders of the Inner line of the salt marsh. Per ref. 1 & 2.
- SL Slough Line. Meanders of Gallinas Creek. Per ref. 1 & 2.
- TLS Tide Land Survey.
- Gallinas Canal per Doc. No. 24621, Can "G" Marin Co. Recorder.



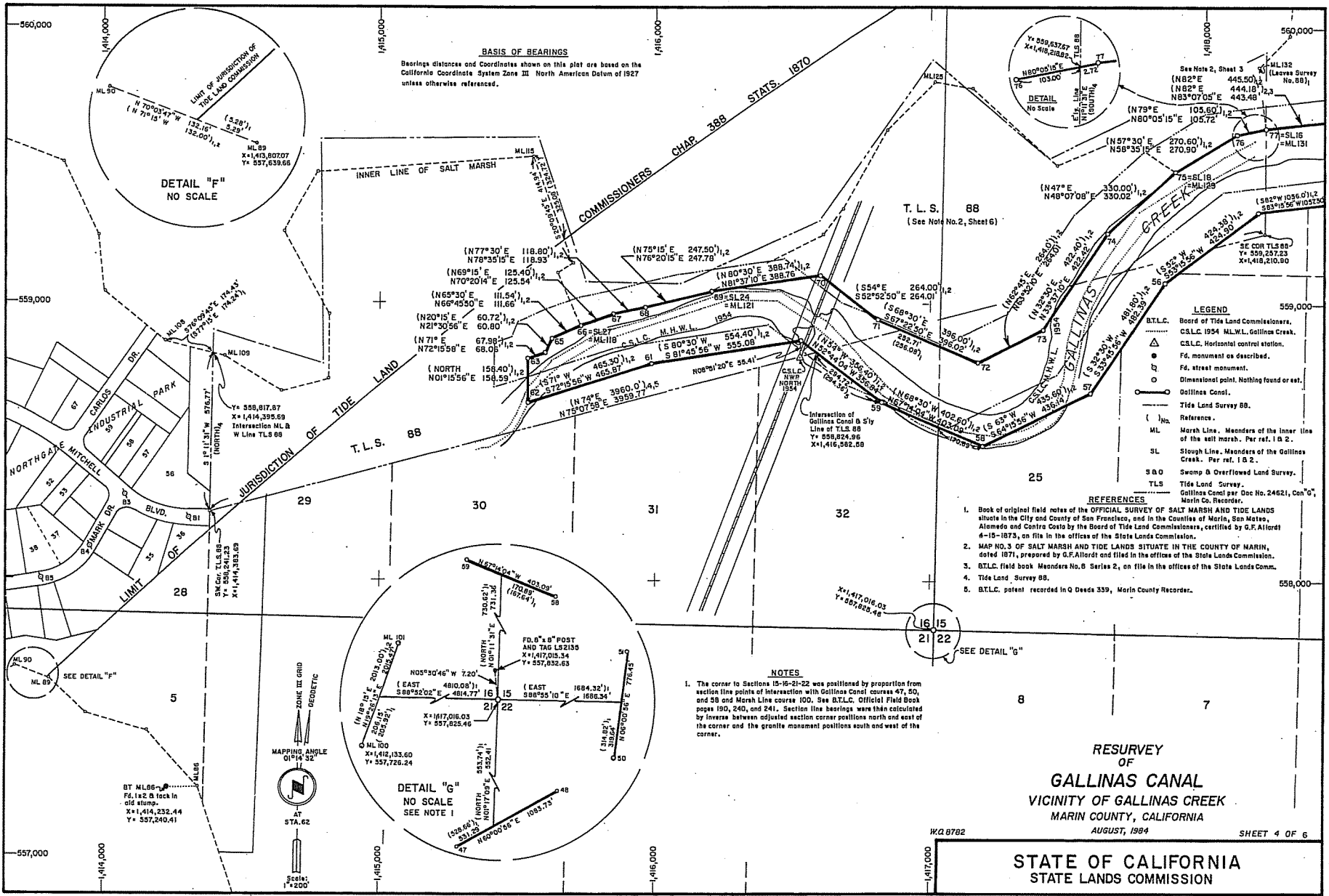
**RESURVEY OF**

**GALLINAS CANAL**  
VICINITY OF GALLINAS CREEK  
MARIN COUNTY, CALIFORNIA  
AUGUST, 1984

SHEET 3 OF 6

**STATE OF CALIFORNIA**  
**STATE LANDS COMMISSION**

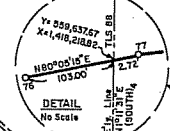
CAN "G"



**BASIS OF BEARINGS**  
 Bearings distances and Coordinates shown on this plot are based on the California Coordinate System Zone III North American Datum of 1927 unless otherwise referenced.

DETAIL "F"  
 NO SCALE

DETAIL "G"  
 NO SCALE  
 SEE NOTE 1



- LEGEND**
- BT.L.C. Board of Tide Land Commission.
  - C.S.L.C. 1954 M.L.W.L. Gallinas Creek.
  - C.S.L.C. Horizontal control station.
  - FD. monument as described.
  - FD. street monument.
  - Dimensional point. Nothing found or set.
  - Gallinas Canal.
  - Tide Land Survey 88.
  - References.
  - ML Marsh Line. Meanders of the inner line of the salt marsh. Per ref. I B 2.
  - SL Slough Line. Meanders of the Gallinas Creek. Per ref. I B 2.
  - S&O Swamp & Overflowed Land Survey.
  - TLS Tide Land Survey.

- REFERENCES**
1. Book of original field notes of the OFFICIAL SURVEY OF SALT MARSH AND TIDE LANDS situate in the City and County of San Francisco, and in the Counties of Marin, San Mateo, Alameda and Contra Costa by the Board of Tide Land Commissioners, certified by G.F. Allford 4-15-1873, on file in the offices of the State Lands Commission.
  2. MAP NO. 3 OF SALT MARSH AND TIDE LANDS SITUATE IN THE COUNTY OF MARIN, dated 1871, prepared by G.F. Allford and filed in the offices of the State Lands Commission.
  3. BT.L.C. field book Meanders No. 8 Series 2, on file in the offices of the State Lands Commission.
  4. Tide Land Survey 88.
  5. BT.L.C. patent recorded in Q Deeds 359, Marin County Recorder.

**NOTES**

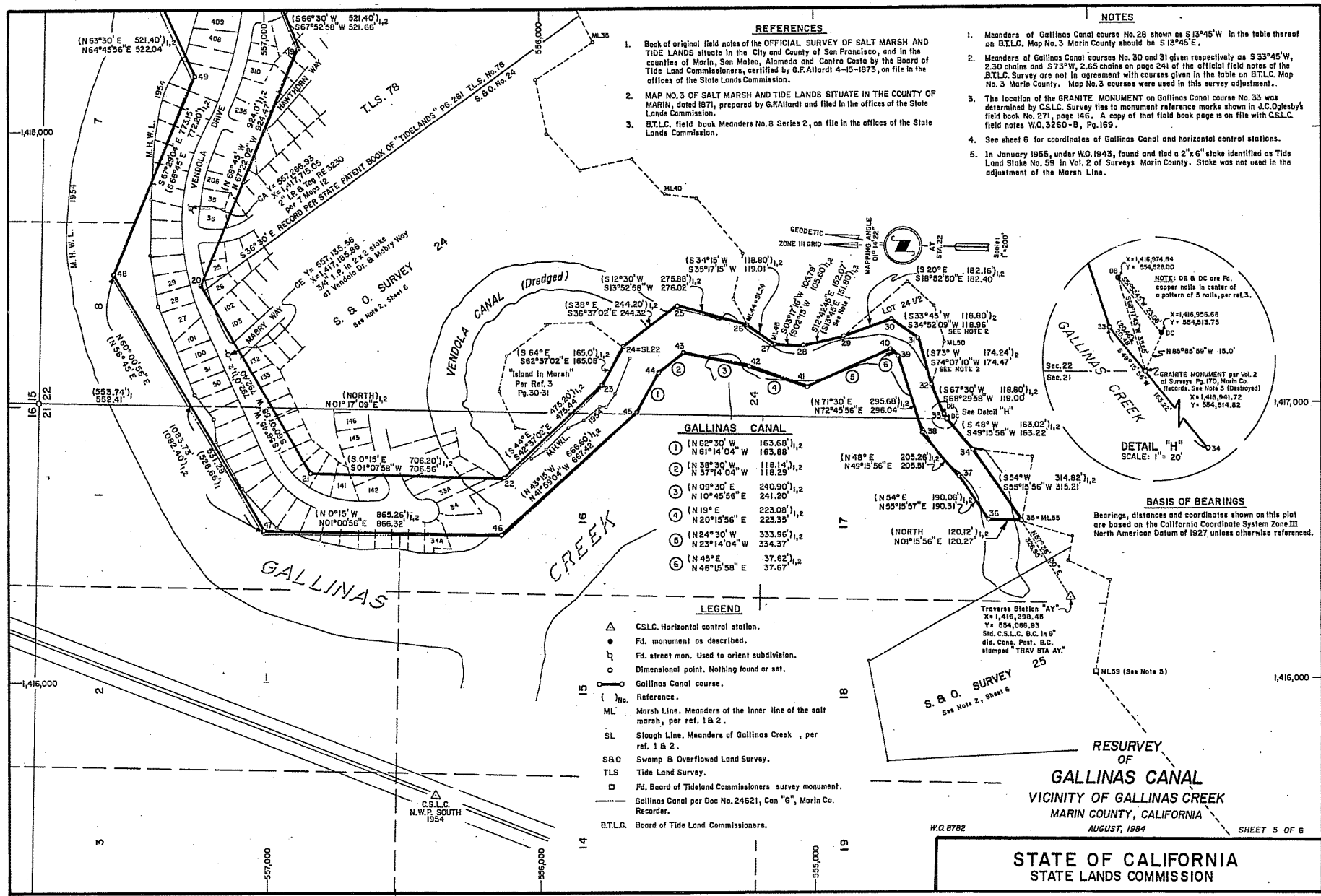
1. The corner to Sections 15-16-21-22 was positioned by proportion from section line points of intersection with Gallinas Canal courses 47, 50, and 58 and Marsh Line course 100. See BT.L.C. Official Field Book pages 190, 240, and 241. Section line bearings were then calculated by inverse between adjacent section corner positions north and east of the corner and the granite monument positions south and west of the corner.

**RESURVEY  
 OF  
 GALLINAS CANAL  
 VICINITY OF GALLINAS CREEK  
 MARIN COUNTY, CALIFORNIA**

**STATE OF CALIFORNIA  
 STATE LANDS COMMISSION**

W.Q. 8782 AUGUST, 1984 SHEET 4 OF 6

CAN "G"



**REFERENCES**

1. Book of original field notes of the OFFICIAL SURVEY OF SALT MARSH AND TIDE LANDS situate in the City and County of San Francisco, and in the counties of Marin, San Mateo, Alameda and Contra Costa by the Board of Tide Land Commissioners, certified by G.F. Allard 4-15-1873, on file in the offices of the State Lands Commission.
2. MAP NO. 3 OF SALT MARSH AND TIDE LANDS SITUATE IN THE COUNTY OF MARIN, dated 1871, prepared by G.F. Allard and filed in the offices of the State Lands Commission.
3. B.T.L.C. field book Meanders No. 8 Series 2, on file in the offices of the State Lands Commission.

**NOTES**

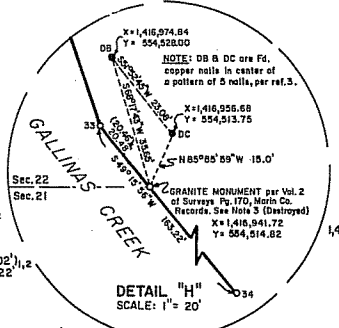
1. Meanders of Gallinas Canal course No. 28 shown as S 13°45' W in the table thereof on B.T.L.C. Map No. 3 Marin County should be S 13°45' E.
2. Meanders of Gallinas Canal courses No. 30 and 31 given respectively as S 33°45' W, 2.30 chains and S 73° W, 2.65 chains on page 241 of the official field notes of the B.T.L.C. Survey are not in agreement with courses given in the table on B.T.L.C. Map No. 3 Marin County. Map No. 3 courses were used in this survey adjustment.
3. The location of the GRANITE MONUMENT on Gallinas Canal course No. 33 was determined by C.S.L.C. Survey line to monument reference marks shown in J.C. Ogleby's field book No. 271, page 146. A copy of that field book page is on file with C.S.L.C. field notes W.O. 3260-B, Pg. 169.
4. See sheet 6 for coordinates of Gallinas Canal and horizontal control stations.
5. In January 1955, under W.O. 1943, found and tied a 2"x6" stake identified as Tide Land State No. 59 in Vol. 2 of Surveys Marin County. Stake was not used in the adjustment of the Marsh Line.

**GALLINAS CANAL**

- |    |                                     |
|----|-------------------------------------|
| 1  | (N 62°30' W 163.68') <sub>1,2</sub> |
| 2  | (N 61°14'04" W 163.88')             |
| 3  | (N 38°30' W 118.14') <sub>1,2</sub> |
| 4  | (N 37°14'04" W 118.29')             |
| 5  | (N 09°30' E 240.90') <sub>1,2</sub> |
| 6  | (N 10°45'56" E 241.20')             |
| 7  | (N 19° E 223.08') <sub>1,2</sub>    |
| 8  | (N 20°15'56" E 223.35')             |
| 9  | (N 24°30' W 333.96') <sub>1,2</sub> |
| 10 | (N 23°14'04" W 334.37')             |
| 11 | (N 45° E 37.62') <sub>1,2</sub>     |
| 12 | (N 46°15'58" E 37.67')              |

**LEGEND**

- △ C.S.L.C. Horizontal control station.
- Fd. monument as described.
- Fd. street mon. Used to orient subdivision.
- Dimensional point. Nothing found or set.
- Gallinas Canal course.
- ( ) No. Reference.
- ML Marsh Line. Meanders of the inner line of the salt marsh, per ref. 1 & 2.
- SL Slough Line. Meanders of Gallinas Creek, per ref. 1 & 2.
- S&O Swamp & Overflowed Land Survey.
- TLS Tide Land Survey.
- Fd. Board of Tideland Commissioners survey monument.
- Gallinas Canal per Doc No. 24621, Can "G", Marin Co. Recorder.
- B.T.L.C. Board of Tide Land Commissioners.



**BASIS OF BEARINGS**

Bearings, distances and coordinates shown on this plot are based on the California Coordinate System Zone III North American Datum of 1927, unless otherwise referenced.

**RESURVEY OF GALLINAS CANAL VICINITY OF GALLINAS CREEK MARIN COUNTY, CALIFORNIA**

**STATE OF CALIFORNIA STATE LANDS COMMISSION**

W.O. 8782

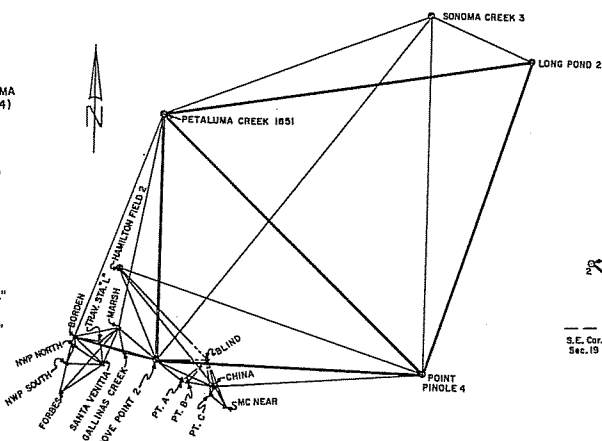
AUGUST, 1984

SHEET 5 OF 6

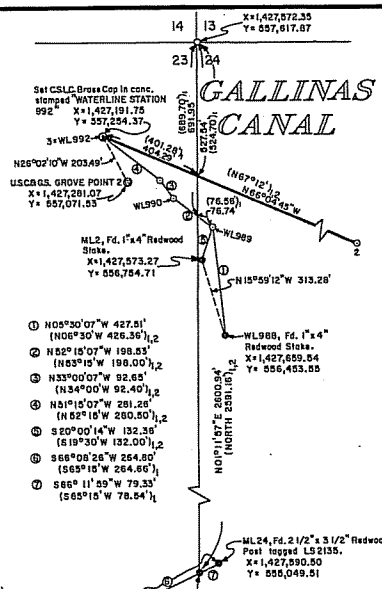
CAN "B"

**HORIZONTAL CONTROL**

N.G.S. STATION	ZONE III COORDINATES X Y	DESCRIPTION
PETALUMA CREEK 1951	1,427,647.43 589,909.54	B.C. in sandstone block stamped "PETALUMA CREEK 1951"
SONOMA CREEK 3 1921 (C.S.L.C. 1958 Position)	1,462,983.21 603,572.12	B.C. in concrete, (Repositioned from PETALUMA CREEK, LONG POND 2 and POINT PINOLE 4)
LONG POND 2	1,475,131.44 597,641.76	B.C. in concrete.
POINT PINOLE 4	1,462,529.30 555,777.50	B.C. in conc. stamped "PT. PINOLE 4 1940"
GROVE POINT 2 1887 (C.S.L.C. 1958 Position)	1,427,281.07 557,071.53	Std. C.S.L.C. B.C. in conc. stamped "USCA G.S. GROVE PT. 2 1887 RESET 1970"
HAMILTON FIELD 2 1951 (C.S.L.C. 1958 Position)	1,422,231.48 569,358.65	B.C. in conc. stamped "HAMILTON FIELD 1951"
CHINA 1951 (C.S.L.C. 1958 Position)	1,435,029.34 553,732.39	B.C. in conc. stamped "CHINA 1951"
C.S.L.C. STATION		
BORDEN 1954	1,416,455.26 560,129.82	B.C. in conc. (Station destroyed)
MARSH 1954	1,422,297.67 561,377.61	B.C. in conc. stamped "MARSH 1954"
GALLINAS CREEK	1,423,079.54 558,040.71	B.C. in conc. stamped "GALLINAS CREEK 1954"
TRAVERSE STATION "L"	1,419,922.92 559,847.96	B.C. in conc. stamped "TRAV. STA. L 1954"
SANTA VENETIA	1,420,325.71 556,485.06	B.C. in conc. stamped "SANTA VENETIA 1954"
NWP NORTH	1,416,524.62 558,807.83	Spike/punch mk. in file on t. R.R. Track.
NWP SOUTH	1,419,587.94 556,382.35	Spike/punch mk. in file on t. of R.R. Track.
FORBES 1954	1,414,833.59 552,435.39	RM's Recovered. Station Destroyed 1970.
FORBES 2 1970	1,414,823.65 552,445.84	B.C. in conc. stamped "FORBES 2"
McNEAR 1959	1,436,654.55 551,090.57	B.C. in rock.
BLIND	1,434,192.72 557,269.87	Temporary Sight Pole on duck blind, in bay.
POINT A	1,430,915.75 554,457.37	Railroad spike.
POINT B	1,431,603.93 554,349.00	"T" iron.
POINT C	1,434,720.39 552,623.88	"T" iron & tag stamped "Pt. C W.O. 3260 B 1959"



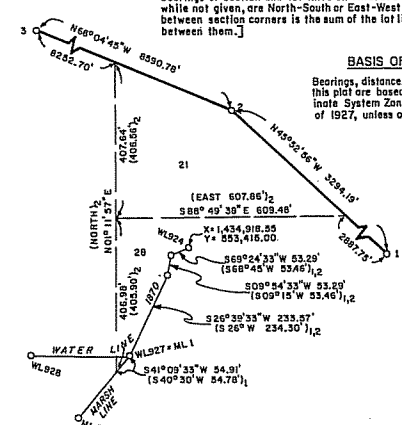
**HORIZONTAL CONTROL SCHEME**  
Scale: 1" = 10,000' approx.



**DETAIL "A"**  
SCALE: 1" = 300'

**GALLINAS CANAL**

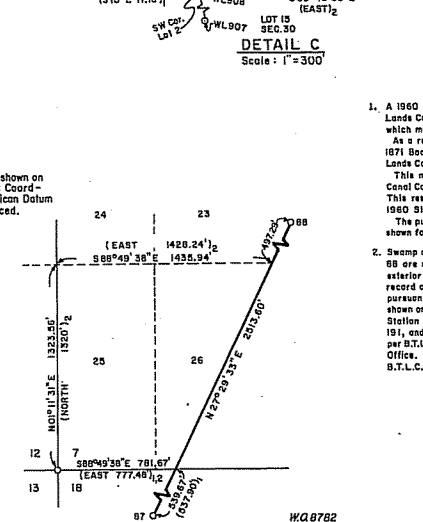
STA	ZONE III COORDINATES X Y	STA	ZONE III COORDINATES X Y
1	1,437,409.57 551,477.83	45	1,416,974.55 555,645.38
2	1,435,044.64 553,771.03	46	528.10 556,141.49
3	1,427,191.75 557,254.37	47	543.45 557,007.67
4	1,423,180.61 558,096.60	48	1,417,482.14 549.28
5	1,422,696.70 557,858.28	49	1,418,196.35 253.22
6	695.29 819.09	50	668.57 475.78
7	564.11 896.33	51	749.34 558,247.95
8	385.49 890.84	52	869.61 597.76
9	694.65 558,018.75	53	1,419,335.85 559,265.21
10	1,421,942.71 557,937.92	54	240.34 459.04
11	678.38 895.78	55	1,418,190.33 335.05
12	1,420,672.89 558,903.14	56	1,417,849.81 880.92
13	1,419,976.95 577.92	57	581.70 558,679.90
14	537.13 722.79	58	188.82 490.53
15	244.65 390.84	59	1,416,817.13 646.51
16	168.51 176.37	60	533.15 862.58
17	064.69 557,303.16	61	1,415,985.79 763.08
18	1,418,776.76 372.37	62	540.06 641.17
19	292.48 556,875.96	63	543.56 789.72
20	1,417,439.21 557,231.72	64	608.39 820.46
21	1,416,762.05 556,837.11	65	630.69 877.02
22	739.08 130.69	66	733.29 921.07
23	1,417,060.00 555,780.81	67	851.51 963.31
24	206.59 704.89	68	968.09 986.84
25	352.32 508.78	69	1,416,208.86 559,045.37
26	286.10 240.82	70	593.46 102.03
27	217.35 143.69	71	803.98 558,942.70
28	211.28 038.06	72	1,417,169.54 790.39
29	244.75 554,889.72	73	406.56 806.66
30	303.77 717.14	74	640.45 559,258.43
31	235.76 619.54	75	886.16 478.74
32	067.96 571.80	76	1,418,117.36 619.94
33	1,416,957.24 528.18	77	221.49 639.13
34	833.56 421.67	78	66.17 691.27
35	574.52 242.08	79	979.84 777.28
36	577.18 362.32	80	1,419,508.60 560,030.99
37	733.58 470.75	81	701.30 075.05
38	889.31 604.86	82	1,420,297.42 559,746.41
39	1,417,172.06 692.57	83	1,421,695.48 123.91
40	189.27 718.61	84	1,422,527.98 558,775.71
41	067.37 558,026.86	85	1,430,204.92 559,697.54
42	144.73 235.39	86	1,433,070.46 561,140.88
43	189.78 472.34	87	465.16 562,308.76
44	118.21 566.52	88	1,434,625.52 564,538.50



**BASIS OF BEARINGS**

Bearings, distances and coordinates shown on this plot are based on the California Coordinate System Zone III, North American Datum of 1927, unless otherwise referenced.

**DETAIL D**  
Scale: 1" = 200'



**DETAIL E**  
Scale: 1" = 500'

- REFERENCES**
- Book of original Field Notes of the OFFICIAL SURVEY OF SALT MARSH AND TIDE LANDS situate in the City and County of San Francisco, and in the Counties of Marin, San Mateo, Alameda and Contra Costa by the Board of Tide Land Commissioners, certified by G.F. Allard 4-15-1873, on file in the offices of the State Lands Commission.
  - MAP NO. 3 OF SALT MARSH AND TIDE LANDS SITUATE IN THE COUNTY OF MARIN, dated 1871, prepared by G.F. Allard and filed in the offices of the State Lands Commission. [The bearings of section and lot lines on Allard's Map No. 3, while not given, are North-South or East-West. Distances between section corners is the sum of the lot line lengths between them.]

- NOTES**
- A 1960 survey and map showing the location of Gallinas Canal was prepared by the State Lands Commission pursuant to Chapter 497, Statutes of 1959 of the California Legislature, which map is on file in Can G, as Document No. 24621, in the Marin County Recorder's Office. As a result of this field survey work in the Gallinas Creek area, it was determined that the 1871 Board of Tide Land Commissioners Gallinas Canal shown on the above mentioned 1960 State Lands Commission map is incorrectly positioned. This map was prepared to reposition the Gallinas Canal, and to correct a bearing error in Canal Course No. 52 as shown on Board of Tide Land Commissioners Map No. 3, Marin County. This survey is based on the recovery of substantially more monuments than were used in the 1960 State Lands Commission Gallinas Canal adjustment. The purpose of this map is only to show the resurvey of the Gallinas Canal. Other lines are shown for informational and orientation purposes.
  - Swamp and Overflowed Land Surveys 21, 24, 25, 33, 35, 124 and Tide Land Surveys 22, 78 and 88 are shown and located approximately on this set of maps for informational purposes. The exterior boundaries of these surveys, as shown, are not intended to represent either the record or the true boundary of the lands patented by the State of California to private parties pursuant to those surveys. [The westerly and southerly lines of Tide Land Survey 88, as shown on Sheet 4, were patented by G.F. Allard's call distance from inner marsh line Station 108 to the west line of T.L.S. 88 per Allard's B.T.L.C. Official Field Note Book, page 191, and by the call distance from the southerly line of T.L.S. 88 to Gallinas Canal Station 89 per B.T.L.C. deed to Wm. T. Coleman, recorded in Book 4 Deeds 339, Marin County Recorder's Office. This position of T.L.S. 88 conforms with the record title position of the adjacent B.T.L.C. lot sales.]

**RESURVEY OF GALLINAS CANAL VICINITY OF GALLINAS CREEK MARIN COUNTY, CALIFORNIA**

AUGUST, 1984 SHEET 6 OF 6

**STATE OF CALIFORNIA STATE LANDS COMMISSION**

WQ8762