

24620
 1820
 RECORDED AT REQUEST OF
State Lands Comm.
 AT 15 MIN. PAST 12 M.
 SEP 16 1960
 Official Records of Marin County, Calif
N.J. Giacomini
 RECORDER
N.J.
 CAN - G

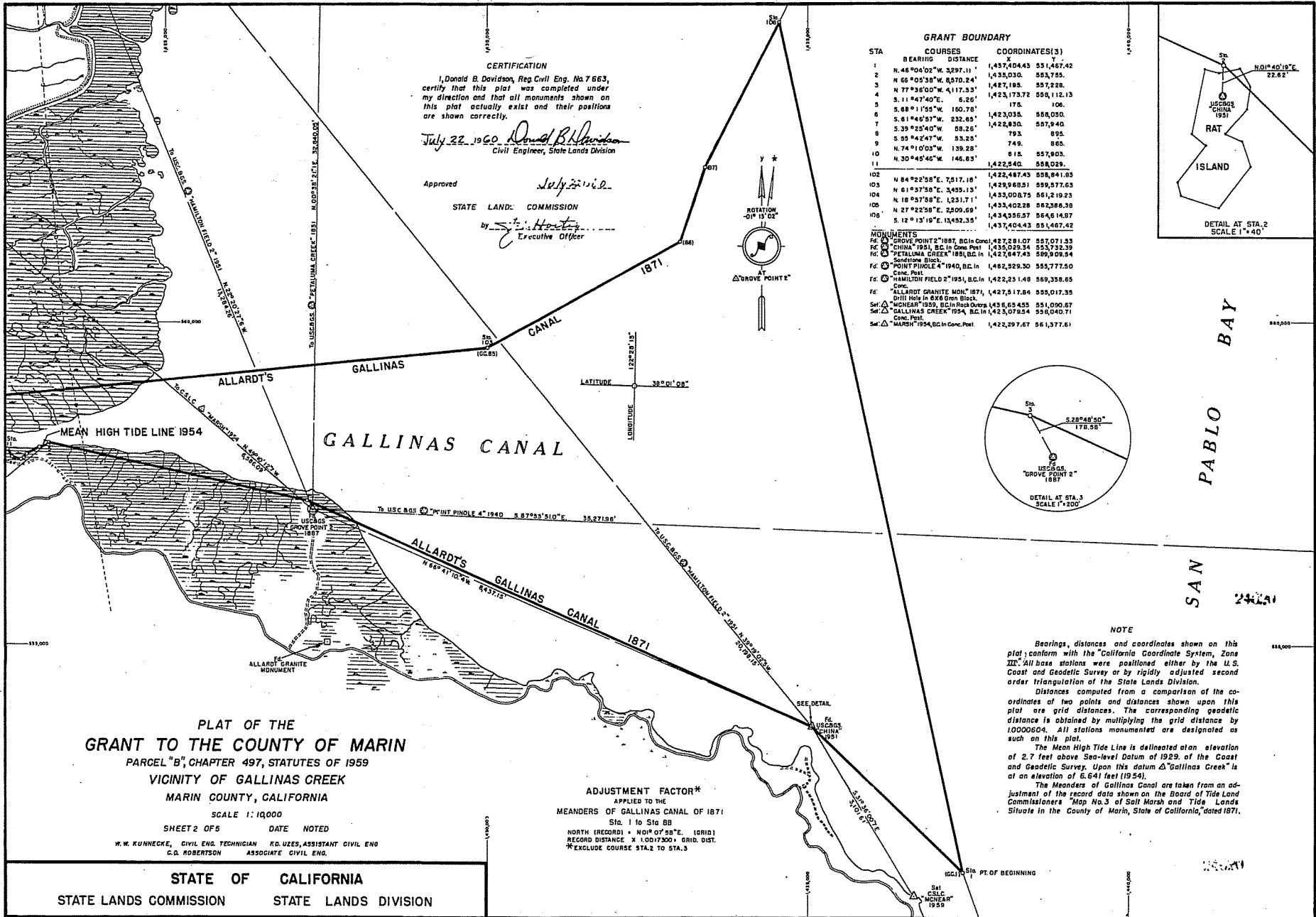
INDEX TO PLATS OF THE
GRANT TO THE COUNTY OF MARIN
 PARCEL "B", CHAPTER 497, STATUTES OF 1859
 VICINITY OF GALLINAS CREEK
 MARIN COUNTY, CALIFORNIA
 SCALE 1 INCH = 1000 FEET
 SHEET 1 OF 5 DATES NOTED
 W. W. KUNNECKE, CIVIL ENG. TECHNICIAN R. B. LEE, ASSISTANT CIVIL ENG.
 G. D. ROBERTSON, ASSOCIATE CIVIL ENG.

STATE OF CALIFORNIA
 STATE LANDS COMMISSION STATE LANDS DIVISION

PREPARED UNDER W.O. 3260

SAN PABLO BAY

24620



CERTIFICATION
 I, Donald B. Davidson, Reg. Civil Eng. No. 7 663,
 certify that this plat was completed under
 my direction and that all monuments shown on
 this plat actually exist and their positions
 are shown correctly.
 July 22, 1960 *Donald B. Davidson*
 Civil Engineer, State Lands Division

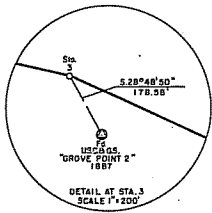
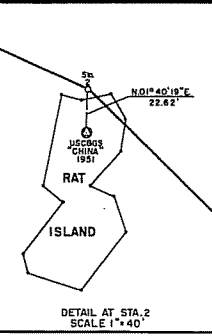
Approved *S. J. Hertz*
 STATE LANDS COMMISSION
 by *S. J. Hertz*
 Executive Officer

GRANT BOUNDARY

STA	BEARINGS	DISTANCE	COORDINATES(3)
1			1,437,404.43 551,467.42
2	N. 48°04'02" W.	3,297.11	1,435,030. 583,785.
3	N. 68°05'30" W.	8,570.24	1,427,198. 557,228.
4	N. 77°38'00" W.	4,117.33	1,423,173.72 558,112.13
5	S. 68°11'55" W.	150.78	1,423,038. 584,000.
6	S. 61°40'57" W.	232.65	1,422,830. 587,940.
7	S. 39°25'40" W.	88.26	793. 895.
8	S. 59°42'27" W.	53.25	749. 865.
9	N. 74°01'00" W.	139.28	818. 557,903.
10	N. 30°40'46" W.	146.83	1,422,540. 588,029.
11			1,422,487.43 588,841.85
102	N. 84°22'58" E.	7,517.18	1,429,668.31 559,877.65
103	N. 61°37'58" E.	3,455.13	1,433,008.75 561,219.23
104	N. 18°37'58" E.	1,231.71	1,433,402.28 582,866.30
105	N. 27°22'58" E.	2,809.69	1,434,356.57 564,614.87
106	S. 12°13'19" E.	1,482.35	1,437,404.43 551,467.42

MONUMENTS

- PC: "GROVE POINT 2" 1871, B.C. in Canal, 427,281.07 587,071.33
- PC: "CHINA" 1951, B.C. in Conc. Plat, 1,435,039.34 553,732.39
- PC: "PETALLUMA CREEK" 1851, B.C. in 1,427,847.43 589,909.34
- PC: "POINT PINNACLE 4" 1940, B.C. in 1,462,529.30 553,777.50
- PC: "HAMILTON FIELD 2" 1951, B.C. in 1,422,231.48 569,358.65
- PC: "ALLARDT GRANITE MON" 1871, 1,427,517.84 555,017.35
- PC: "DRILL HOLES IN 8X8 OREN BLOCK"
- Set: "MCNEAR" 1959, B.C. in Rec. Data 443,656.45 551,090.67
- Set: "GALLINAS CREEK" 1954, B.C. in 1,423,079.54 558,040.71
- Set: "MARSH" 1954, B.C. in Conc. Plat, 1,422,297.67 561,377.61



NOTE

Bearings, distances and coordinates shown on this plat conform with the California Coordinate System, Zone III. All base stations were positioned either by the U.S. Coast and Geodetic Survey or by rigidly adjusted second order triangulation of the State Lands Division.

Distances computed from a comparison of the coordinates of two points and distances shown upon this plat are grid distances. The corresponding geodetic distance is obtained by multiplying the grid distance by 1.0000604. All stations monumented are designated as such on this plat.

The Mean High Tide Line is delineated at an elevation of 2.7 feet above Sea-level Datum of 1929, of the Coast and Geodetic Survey. Upon this datum "Gallinas Creek" is at an elevation of 6.641 feet (1954).

The Meanders of Gallinas Canal are taken from an adjustment of the record data shown on the Board of Tide Land Commissioners "Map No. 3 of Salt Marsh and Tide Lands Situate in the County of Marin, State of California," dated 1871.

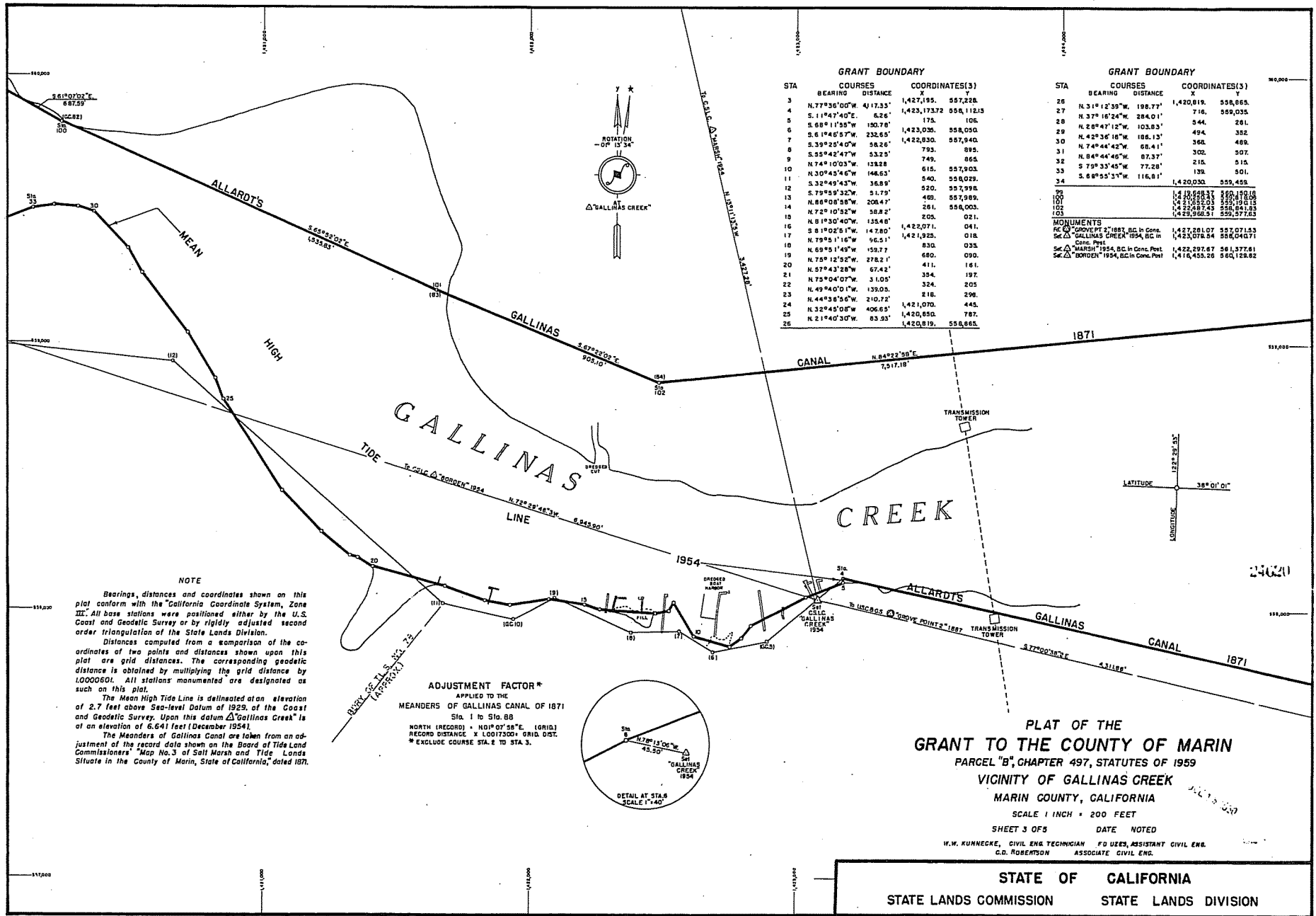
**PLAT OF THE
 GRANT TO THE COUNTY OF MARIN
 PARCEL "B", CHAPTER 497, STATUTES OF 1959
 VICINITY OF GALLINAS CREEK
 MARIN COUNTY, CALIFORNIA
 SCALE 1:10,000
 SHEET 2 OF 5 DATE NOTED**

W.W. KUNNECKE, CIVIL ENG. TECHNICIAN R.D. UZES, ASSISTANT CIVIL ENG.
 G.D. ROBERTSON ASSOCIATE CIVIL ENG.

ADJUSTMENT FACTOR*
 APPLIED TO THE
 MEANDERS OF GALLINAS CANAL OF 1871
 Sta. 1 to Sta. 88
 NORTH (RECORD) + N 0° 07' 59" E. (GRID)
 RECORD DISTANCE + 1,001,720 + GRID. DIST.
 *EXCLUDE COURSE STA. 2 TO STA. 3

**STATE OF CALIFORNIA
 STATE LANDS COMMISSION STATE LANDS DIVISION**

PREPARED UNDER W.O. 3260



GRANT BOUNDARY

STA	COURSES	COORDINATES(3)
3	N. 77°36'00"W. 417.35'	1,423,195. 557,228.
4	S. 1°47'40"E. 6.26'	1,423,173.72 558,112.13
5	S. 68°1'19"W. 150.70'	175. 106.
6	S. 61°46'57"W. 232.65'	1,423,030. 558,030.
7	S. 39°25'40"W. 58.26'	1,422,830. 557,940.
8	S. 55°42'47"W. 53.25'	793. 895.
9	N. 74°10'03"W. 133.28'	749. 855.
10	N. 74°10'03"W. 133.28'	615. 557,903.
11	N. 30°45'46"W. 146.63'	540. 558,029.
12	S. 30°45'46"W. 56.99'	920. 557,998.
13	N. 88°08'58"W. 208.47'	489. 557,989.
14	N. 72°10'52"W. 58.82'	261. 558,003.
15	N. 81°30'40"W. 135.40'	805. 021.
16	S. 81°02'51"W. 14.780'	1,422,071. 041.
17	N. 79°51'18"W. 96.51'	1,421,925. 018.
18	N. 69°51'49"W. 159.77'	830. 035.
19	N. 73°12'50"W. 278.21'	680. 090.
20	N. 57°43'28"W. 67.42'	411. 161.
21	N. 75°04'07"W. 31.05'	354. 197.
22	N. 49°40'01"W. 139.03.	324. 205.
23	N. 44°38'56"W. 210.72'	218. 298.
24	N. 32°45'08"W. 406.65'	1,421,070. 445.
25	N. 21°40'30"W. 83.93'	1,420,850. 787.
26		558,865.

GRANT BOUNDARY

STA	COURSES	COORDINATES(3)
26	N. 31°12'39"W. 198.77'	1,420,819. 558,865.
27	N. 37°16'24"W. 284.01'	716. 559,035.
28	N. 29°47'12"W. 103.83'	544. 281.
29	N. 42°36'16"W. 188.13'	494. 352.
30	N. 74°44'42"W. 68.41'	368. 489.
31	N. 84°44'46"W. 87.37'	302. 507.
32	S. 79°33'45"W. 77.28'	215. 501.
33	S. 68°55'31"W. 116.81'	138.
34		1,420,030. 559,458.

MONUMENTS

NO.	DESCRIPTION	COORDINATES(3)
95	1/4 CORNER SEC. 18, T. 38N., R. 12E., S. 1/4	1,419,848.87 559,160.18
100	1/4 CORNER SEC. 18, T. 38N., R. 12E., S. 1/4	1,420,868.35 559,411.08
101	1/4 CORNER SEC. 18, T. 38N., R. 12E., S. 1/4	1,420,868.35 559,411.08
102	1/4 CORNER SEC. 18, T. 38N., R. 12E., S. 1/4	1,422,087.43 558,941.83
103	1/4 CORNER SEC. 18, T. 38N., R. 12E., S. 1/4	1,422,087.43 558,941.83

NOTE

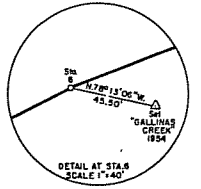
Bearings, distances and coordinates shown on this plat conform with the California Coordinate System, Zone III. All base stations were positioned either by the U.S. Coast and Geodetic Survey or by rigidly adjusted second order triangulation of the State Lands Division.

Distances computed from a comparison of the coordinates of two points and distances shown upon this plat are grid distances. The corresponding geodetic distance is obtained by multiplying the grid distance by 1.0000601. All stations monumented are designated as such on this plat.

The Mean High Tide Line is delineated at an elevation of 2.7 feet above Sea-level Datum of 1929. of the Coast and Geodetic Survey. Upon this datum Gallinas Creek is at an elevation of 6.641 feet (December 1954).

The Meanders of Gallinas Canal are taken from an adjustment of the record data shown on the Board of Tide Land Commissioners' Map No. 3 of Salt Marsh and Tide Lands Situate in the County of Marin, State of California, dated 1871.

ADJUSTMENT FACTOR*
 APPLIED TO THE
 MEANDERS OF GALLINAS CANAL OF 1871
 Sta. 1 to Sta. 88
 NORTH (REGARD) = N. 01° 07' 26" E. (OR 101)
 RECORD DISTANCE x 1.0017353 = GRID DIST.
 * EXCLUDE COURSE STA. 2 TO STA. 3.



**PLAT OF THE
 GRANT TO THE COUNTY OF MARIN**
 PARCEL "B", CHAPTER 497, STATUTES OF 1959
 VICINITY OF GALLINAS CREEK
 MARIN COUNTY, CALIFORNIA
 SCALE 1 INCH = 200 FEET
 SHEET 3 OF 5 DATE NOTED
 W.W. KUNNECKE, CIVIL ENG. TECHNICIAN F.D. UZZE, ASSISTANT CIVIL ENG.
 G.D. ROBERTSON ASSOCIATE CIVIL ENG.

STATE OF CALIFORNIA
STATE LANDS COMMISSION STATE LANDS DIVISION

NOTE
 Bearings, distances and coordinates shown on this plat conform with the California Coordinate System, Zone III. All base stations were positioned either by the U.S. Coast and Geodetic Survey or by rigidly adjusted second order triangulation of the State Lands Division.

Distances computed from a comparison of the coordinates of two points and distances shown upon this plat are grid distances. The corresponding geodetic distance is obtained by multiplying the grid distance by 1.0000601. All stations monumented are designated as such on this plat.

The Mean High Tide Line and the Mean Low Tide Line are delineated at an elevation of 2.7 feet above and 1.6 feet below Sea-level Datum of 1929 of the Coast and Geodetic Survey. Upon this Datum, U.S.C.G.S. B.M. V-107 (Reset 1949) is at an elevation of 10.846 feet (1956).

The Meanders of Gallinas Canal are taken from an adjustment of the record data shown on the Board of Tide Land Commissioners "Map No. 3 of Salt Marsh and Tide Lands Situate in the County of Marin, State of California," dated 1871.

GRANT BOUNDARY

STA	BEARING	DISTANCE	COORDINATES (1)
			X Y
32	S. 79°33'45"W	772.21'	1,420,215. 559,110.
33	S. 68°55'30"W	116.81'	139. 501.
34	S. 30°04'07"W	2,185'	030. 459.
35	S. 78°34'45"W	36.14'	1,420,019. 440.
36	S. 44°39'40"W	119.50'	1,419,984. 431.
37	S. 40°44'33"W	352.40'	310. 346.
38	S. 51°04'56"W	173.51'	470. 559,079.
39	S. 51°04'56"W	173.51'	535. 559,970.
40	S. 66°02'15"W	49.24'	490. 950.
41	S. 39°23'55"W	292.91'	174. 229.
42	S. 35°00'15"W	86.64'	331. 704.
43	S. 19°21'52"W	78.45'	281. 633.
44	S. 11°27'50"W	145.91'	255. 559.
45	S. 19°32'24"W	194.10'	174. 229.
46	S. 07°47'31"W	19.177'	146. 559,059.
47	S. 15°29'41"W	104.81'	120. 557,938.
48	S. 05°51'24"W	89.21'	114. 849.
57	N. 05°25'58"E	776.84'	1,418,662.56 557,481.26
58	N. 21°37'50"E	376.85'	742.18 568,254.01
59	N. 21°37'50"E	376.85'	1,418,881.11 558,604.32

MONUMENTS

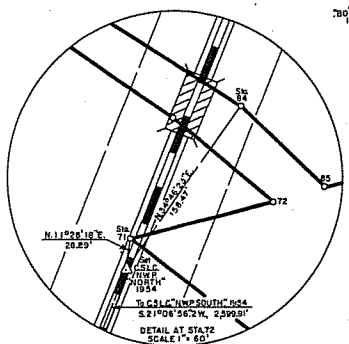
Set: "A" "MARK NORTH" 1954, Prec. Mark. in Stone	1,418,524.82	558,807.83
Set: "B" "BORNE" 1954, BC in Conc. Post	1,418,455.26	560,129.82
Set: "C" "TRAK STA 1" 1954, BC in Conc. Post	1,418,522.92	558,847.26
Set: "D" "SANTA VENETIA" 1954, BC in Conc. Post	1,420,325.71	556,485.08
Set: "E" "MARCH" 1954, BC in Conc. Post	1,422,297.67	561,377.61
Set: "F" "CL" Nail in Pavement (1954)	1,418,628.49	558,645.81
Set: "G" "MARCH" 1954, Prec. Mark. in Stone	1,418,538.00	558,332.99
Set: "H" "CL" Nail in Pavement (1954)	1,419,371.10	558,151.21

GRANT BOUNDARY

STA	BEARING	DISTANCE	COORDINATES (3)
			X Y
59	N. 64°37'59"E	803.35'	1,418,881.11 558,604.32
60	N. 26°22'02"W	216.19'	1,418,152.02 559,334.51
61	S. 83°07'58"W	953.17'	1,419,119.91 528.21
62	N. 01°07'58"E	128.40'	1,418,173.58 414.24
63	S. 40°27'58"W	346.09'	1,418,176.12 342.81
64	S. 48°00'46"W	121.08'	1,417,875. 372.
65	S. 37°16'05"W	197.45'	785. 291.
66	S. 76°18'57"E	73.50'	665.71 133.66
67	S. 53°37'52"W	93.31'	737.19 152.40
68	S. 33°31'14"W	477.23'	729.57 259,146.68
69	S. 64°07'58"W	438.24'	462.26 558,744.84
70	N. 87°22'02"W	403.24'	1,417,069.63 354.47
71	N. 52°52'02"W	205.52'	1,416,697.39 708.07
72	N. 75°18'58"E	112.37'	550.35 856.15
73	N. 50°03'14"W	101.81'	839.05 884.63
74	N. 50°03'14"W	101.81'	561. 558,930.
75	N. 56°57'35"W	146.73'	436. 852,010
76	N. 89°41'07"W	182.00'	1,416,256. 258,011
77	S. 22°03'43"W	474.04'	1,415,803. 553,383.
78	S. 39°34'59"W	179.74'	850. 74
79	S. 71°18'46"W	71.78'	1,415,952. 558,751.

GRANT BOUNDARY

STA	BEARING	DISTANCE	COORDINATES (3)
			X Y
79	N. 45°00'00"E	53.74'	1,415,382. 558,751.
80	N. 58°59'10"E	196.02'	820. 789.
81	N. 74°28'53"E	220.06'	1,413,788. 890.
82	N. 70°34'59"E	276.74'	1,418,000 558,949.
83	N. 89°41'49"E	189.00'	261. 550,041.
84	S. 57°46'36"E	1,55.74'	450. 555,742.
85	S. 45°27'04"E	89.69'	512. 558,938.
86	N. 75°18'57"E	198.05'	678.92 875.08
87	S. 67°22'02"E	195.09'	1,416,870.50 828.28
88	N. 63°52'59"E	584.46'	1,417,050.57 850.21
89	N. 33°37'56"E	89.00'	288.03 558,966.63
90	N. 75°18'58"E	264.82'	342.87 559,049.06
91	N. 35°09'05"E	263.94'	599.04 118.19
92	N. 56°57'25"E	368.82'	1,417,751. 332.
93	N. 62°36'27"E	131.02'	1,418,060. 533.
94	N. 01°07'58"E	114.16'	177.13 593.69
95	N. 85°07'35"E	370.37'	179.39 707.83
96	N. 74°28'53"E	330.57'	547.20 752.14
97	N. 64°22'58"E	588.42'	1,418,856.43 558,833.35
98	N. 77°07'51"E	217.84'	1,419,397.71 560,042.76
99	S. 61°07'02"E	687.89'	1,420,250.43 558,618.26
100			



NOTE
 The Grant Boundary from Sta. 63 to 66, Sta. 73 to 86, and Sta. 91 to 94, is along the Mean Low Tide Line of 1959.

PLAT OF THE GRANT TO THE COUNTY OF MARIN
PARCEL "B", CHAPTER 497, STATUTES OF 1959
VICINITY OF GALLINAS CREEK
MARIN COUNTY, CALIFORNIA
 SCALE 1 INCH = 200 FEET
 SHEET 4 OF 5 DATE NOTED
 W.W. KUNNECKE, CIVIL ENG. TECHNICIAN F.D. UZZE, ASSISTANT CIVIL ENG.
 C.D. ROBERTSON ASSOCIATE CIVIL ENG.

ADJUSTMENT FACTOR*
 APPLIED TO THE MEANDERS OF GALLINAS CANAL OF 1871
 Sta. 1 to Sta. 88
 NORTH (REGARD) = N. 0° of 59"E. (GRID.)
 RECORD DISTANCE X 1.0017300 = GRID DIST.
 * EXCLUDE COURSE STA. 2 TO STA. 3.

STATE OF CALIFORNIA
STATE LANDS COMMISSION STATE LANDS DIVISION

PREPARED UNDER W.O. 3260

