

Seismic Analysis

Velocity Waveform Analysis

Serial Number: 7438
Firmware Version: 0C-06.01
Event Date: 02/12/2015 11:38:15 (UTC -08:00)
Event number: 2
Recording Time: 5 s
Client: COUNTY OF MARIN
Operation: SAN RAFAEL ROCK QUARRY
Location: 16 MARIN BAY PARK CT.
Distance:
Operator: VIBRA-TECH IP2
Comment: WILLIAM HOSKEN RES.
Seismic Trigger: 0.03 in/s
Sound Trigger: OFF

Additional Info:

j-GEO-01252
 N37 59.524, W122 27.373

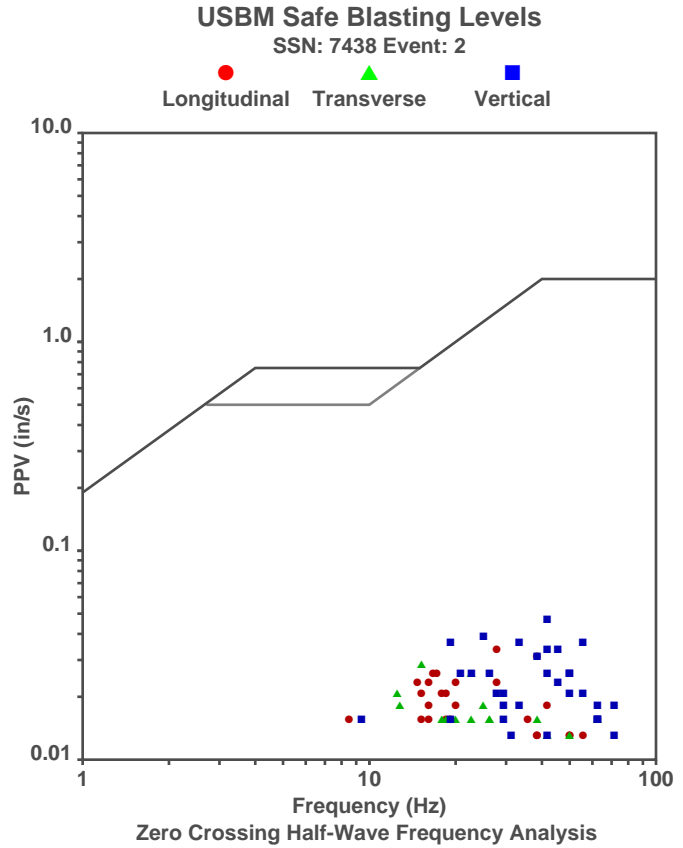
Summary Data

	L	T	V
PPV (in/s):	0.0325	0.0275	0.045
FREQ (HZ):	27.8	15.2	22.7
PD (.001'')	0.285	0.265	0.2975
PPA (g):	0.02604	0.01302	0.03906

Peak Vector Sum: 0.0525 in/s
Peak Air Pressure: 102.9 dB
 0.0004634 psi @ 2.8 HZ

Shaketable Calibrated

On: 01/15/2015 (UTC -08:00)
By: Vibra-Tech, Inc.
 2700 Holloway Road - Suite 113
 Louisville, KY 40203 U.S.A.

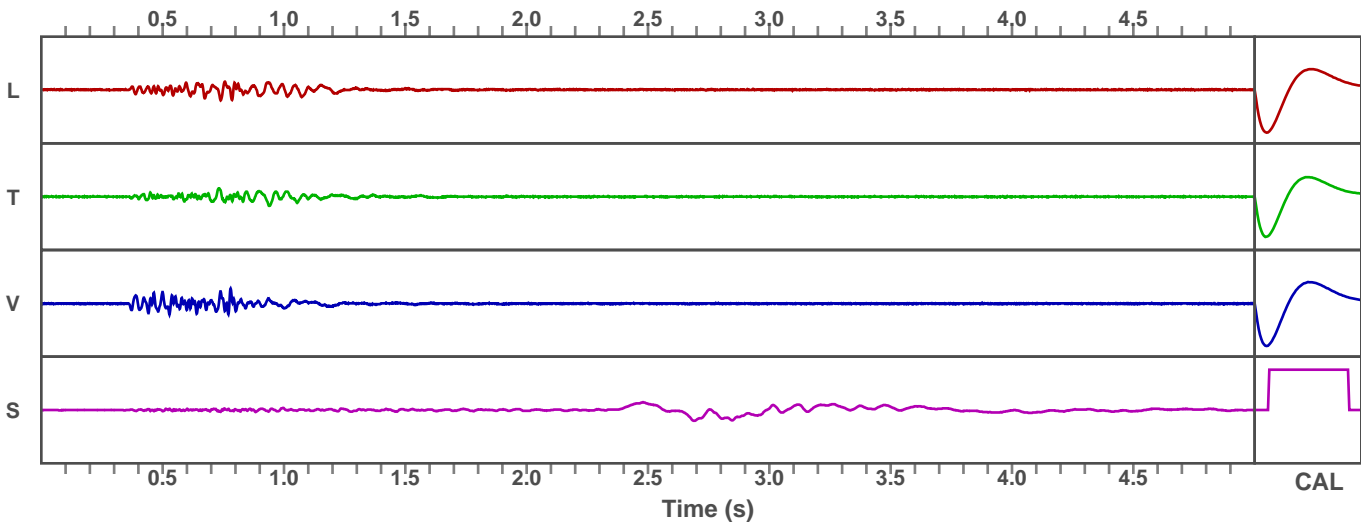


Waveform Graph Scale

Time Scale: 0.1 s
Seismic Scale: +/- 0.16 in/s
Sound Scale: +/- 0.0023 psi

Velocity Waveform

SSN: 7438 Event: 2



Seismic Analysis

Velocity Waveform Analysis

Serial Number: 7543
Firmware Version: 0C-06.01
Event Date: 02/12/2015 11:38:15 (UTC -08:00)
Event number: 2
Recording Time: 5 s
Client: COUNTY OF MARIN
Operation: SAN RAFAEL ROCK QUARRY
Location: ON QUARRY PROPERTY
Distance:
Operator: VIBRA-TECH IP2
Comment:
Seismic Trigger: 0.03 in/s
Sound Trigger: OFF

Additional Info:

j-GEO-01253
 N37 59.481, W122 27.256

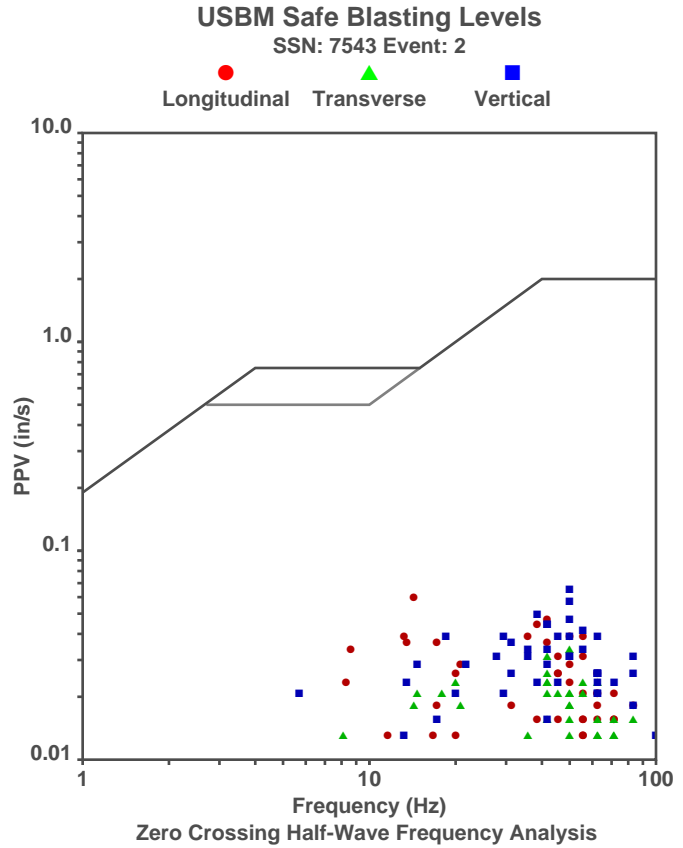
Summary Data

	L	T	V
PPV (in/s):	0.0575	0.0325	0.0625
FREQ (HZ):	13.5	50	50
PD (.001'')	0.5125	0.2625	0.4775
PPA (g):	0.03906	0.02604	0.05208

Peak Vector Sum: 0.07 in/s
Peak Air Pressure: 103.2 dB
 0.0004812 psi @ 3.4 HZ

Shaketable Calibrated

On: 01/15/2015 (UTC -08:00)
By: Vibra-Tech, Inc.
 2700 Holloway Road - Suite 113
 Louisville, KY 40203 U.S.A.



Waveform Graph Scale

Time Scale: 0.1 s
Seismic Scale: +/- 0.16 in/s
Sound Scale: +/- 0.0023 psi

Velocity Waveform

SSN: 7543 Event: 2

