

Seismic Analysis

Velocity Waveform Analysis

Serial Number: 7438
Firmware Version: 0C-06.01
Event Date: 10/07/2015 11:33:05 (UTC -07:00)
Event number: 14
Recording Time: 5 s
Client: COUNTY OF MARIN
Operation: SAN RAFAEL ROCK QUARRY
Location: 16 MARIN BAY PARK CT.
Distance:
Operator: VIBRA-TECH IP2
Comment: WILLIAM HOSKEN RES.
Seismic Trigger: 0.03 in/s
Sound Trigger: OFF

Additional Info:

j-GEO-01252
N37 59.524, W122 27.373

Summary Data

	L	T	V
PPV (in/s):	0.0525	0.0525	0.06
FREQ (HZ):	38.5	31.3	31.3
PD (.001''):	0.3775	0.3825	0.5625
PPA (g):	0.03255	0.03255	0.05208

Peak Vector Sum: 0.0725 in/s
Peak Air Pressure: 110.4 dB
 0.0009802 psi @ 1.6 HZ

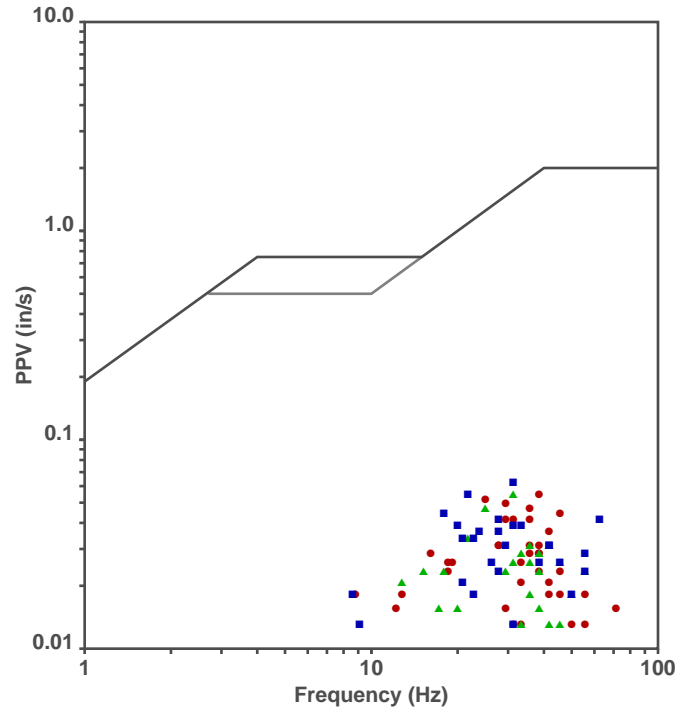
Shaketable Calibrated

On: 01/15/2015 (UTC -07:00)
By: Vibra-Tech, Inc.
 2700 Holloway Road - Suite 113
 Louisville, KY 40203 U.S.A.

USBM Safe Blasting Levels

SSN: 7438 Event: 14

● Longitudinal ▲ Transverse ■ Vertical



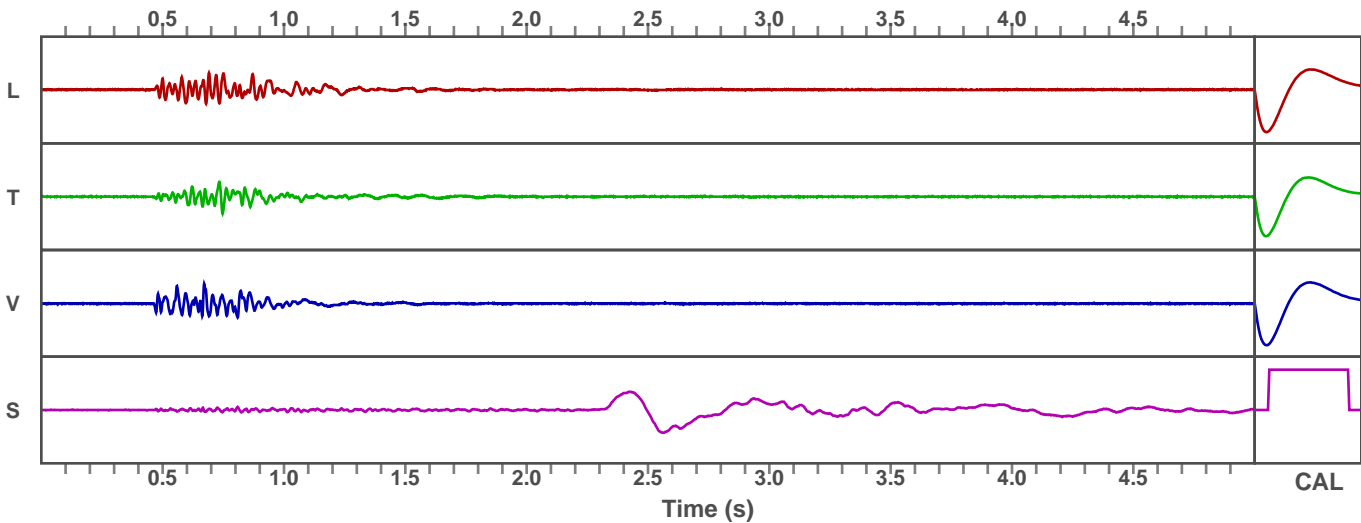
Zero Crossing Half-Wave Frequency Analysis

Waveform Graph Scale

Time Scale: 0.1 s
Seismic Scale: +/- 0.16 in/s
Sound Scale: +/- 0.0023 psi

Velocity Waveform

SSN: 7438 Event: 14



Seismic Analysis

Velocity Waveform Analysis

Serial Number: 7543
Firmware Version: 0C-06.01
Event Date: 10/07/2015 11:33:04 (UTC -07:00)
Event number: 18
Recording Time: 5 s
Client: COUNTY OF MARIN
Operation: SAN RAFAEL ROCK QUARRY
Location: ON QUARRY PROPERTY
Distance:
Operator: VIBRA-TECH IP2
Comment:
Seismic Trigger: 0.03 in/s
Sound Trigger: OFF

Additional Info:

j-GEO-01253
 N37 59.481, W122 27.256

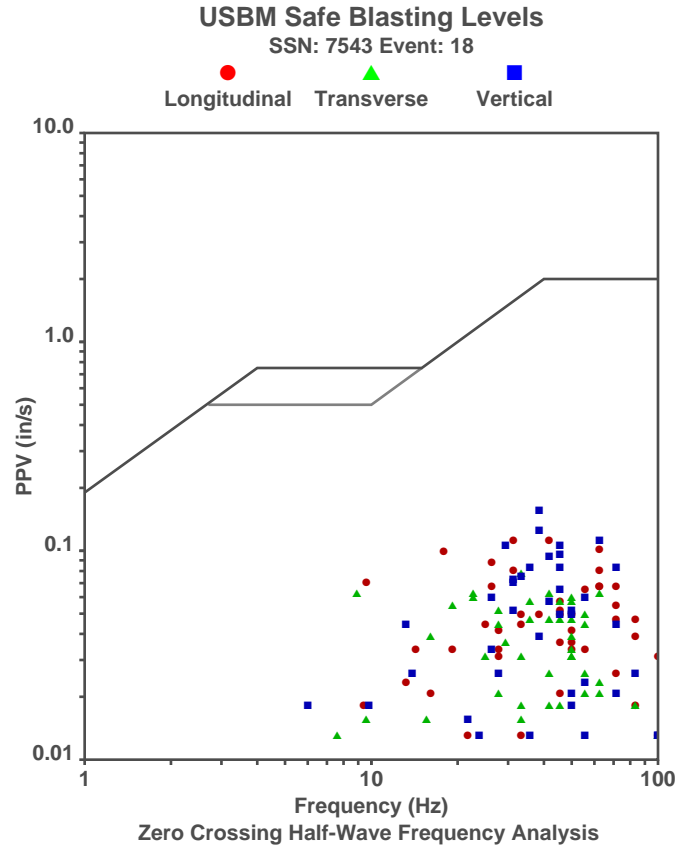
Summary Data

	L	T	V
PPV (in/s):	0.1075	0.075	0.15
FREQ (HZ):	31.3	33.3	38.5
PD (.001"):	0.965	0.61	0.6875
PPA (g):	0.09766	0.05859	0.1237

Peak Vector Sum: 0.1575 in/s
Peak Air Pressure: 111.6 dB
 0.001176 psi @ 2.4 HZ

Shaketable Calibrated

On: 01/15/2015 (UTC -07:00)
By: Vibra-Tech, Inc.
 2700 Holloway Road - Suite 113
 Louisville, KY 40203 U.S.A.



Waveform Graph Scale

Time Scale: 0.1 s
Seismic Scale: +/- 0.225 in/s
Sound Scale: +/- 0.0023 psi

Velocity Waveform

SSN: 7543 Event: 18

