

Seismic Analysis Velocity Waveform Analysis

Serial Number: 7438
Firmware Version: 0C-06.01
Event Date: 09/04/2015 11:30:31 (UTC -07:00)
Event number: 12
Recording Time: 5 s
Client: COUNTY OF MARIN
Operation: SAN RAFAEL ROCK QUARRY
Location: 16 MARIN BAY PARK CT.
Distance:
Operator: VIBRA-TECH IP2
Comment: WILLIAM HOSKEN RES.
Seismic Trigger: 0.03 in/s
Sound Trigger: OFF

Additional Info:

j-GEO-01252
N37 59.524, W122 27.373

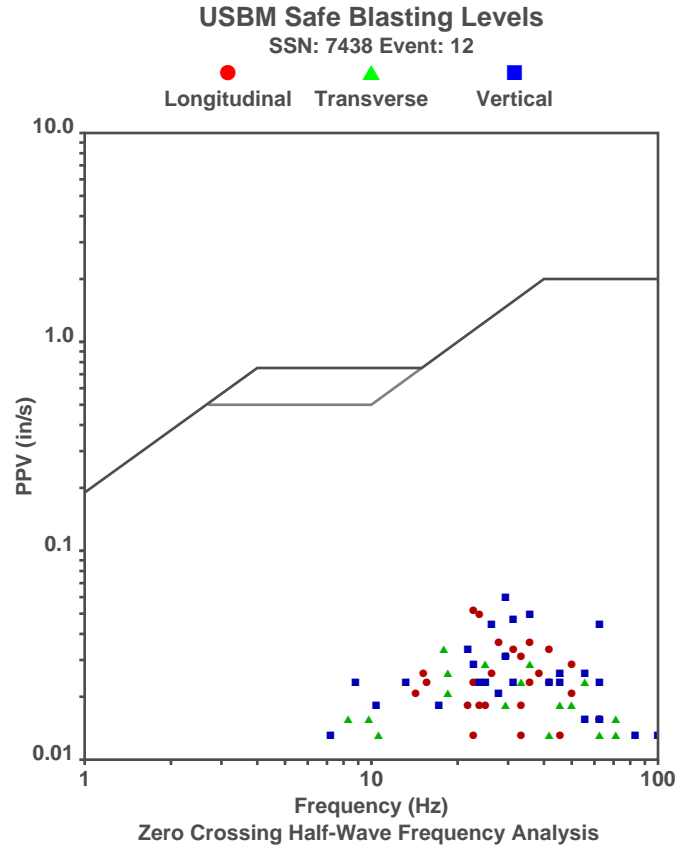
Summary Data

	L	T	V
PPV (in/s):	0.05	0.0325	0.0575
FREQ (HZ):	22.7	17.2	29.4
PD (.001''):	0.38	0.2725	0.395
PPA (g):	0.02604	0.02604	0.04557

Peak Vector Sum: 0.0575 in/s
Peak Air Pressure: 107.5 dB
 0.0007485 psi @ 2.8 HZ

Shaketable Calibrated

On: 01/15/2015 (UTC -07:00)
By: Vibra-Tech, Inc.
 2700 Holloway Road - Suite 113
 Louisville, KY 40203 U.S.A.

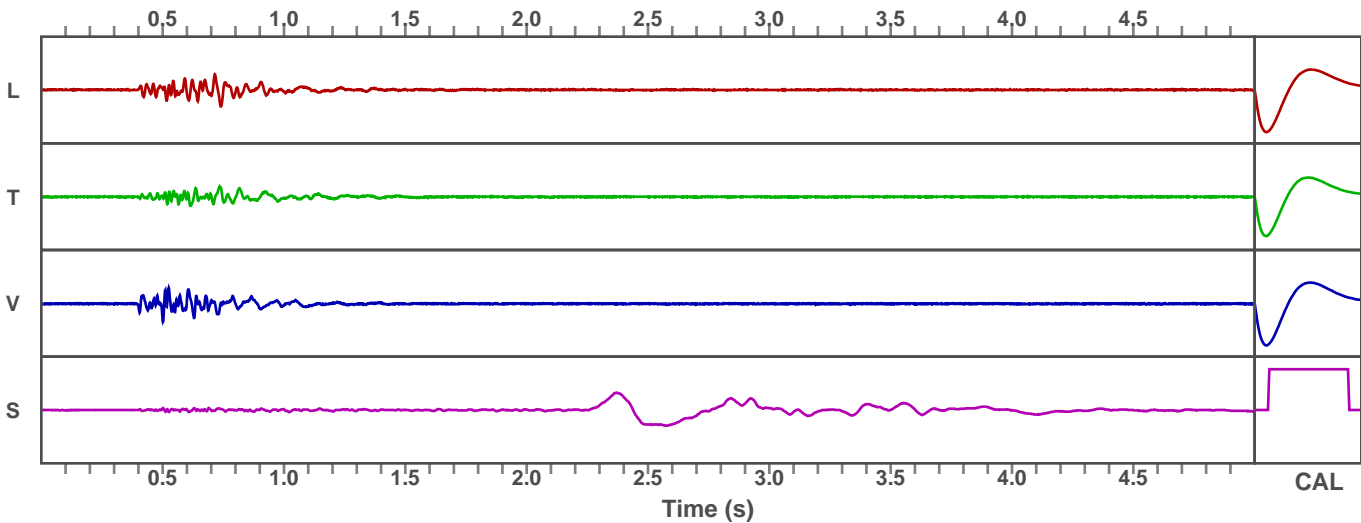


Waveform Graph Scale

Time Scale: 0.1 s
Seismic Scale: +/- 0.16 in/s
Sound Scale: +/- 0.0023 psi

Velocity Waveform

SSN: 7438 Event: 12



Seismic Analysis

Velocity Waveform Analysis

Serial Number: 7543
Firmware Version: 0C-06.01
Event Date: 09/04/2015 11:30:30 (UTC -07:00)
Event number: 16
Recording Time: 5 s
Client: COUNTY OF MARIN
Operation: SAN RAFAEL ROCK QUARRY
Location: ON QUARRY PROPERTY
Distance:
Operator: VIBRA-TECH IP2
Comment:
Seismic Trigger: 0.03 in/s
Sound Trigger: OFF

Additional Info:

j-GEO-01253
 N37 59.481, W122 27.256

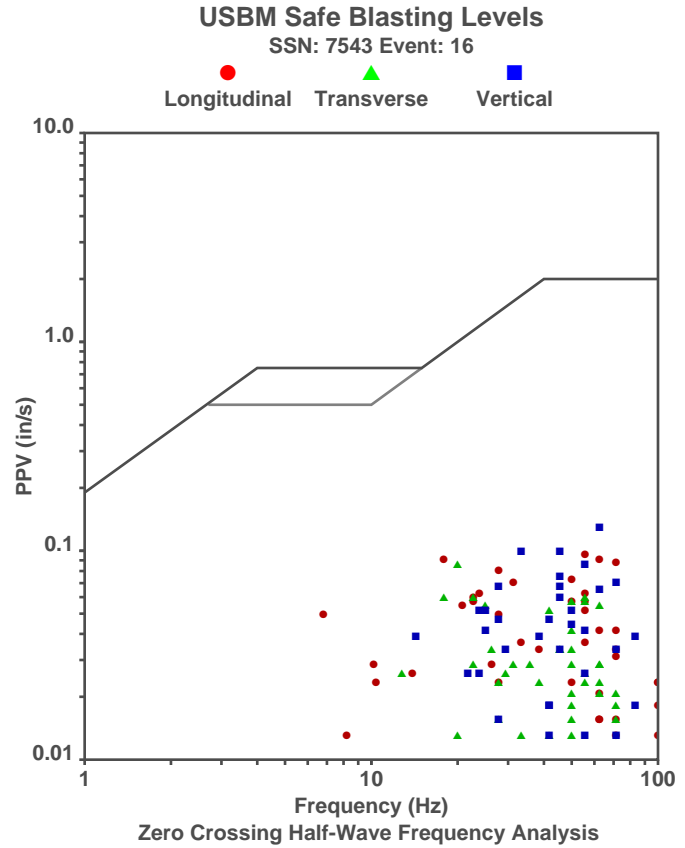
Summary Data

	L	T	V
PPV (in/s):	0.0925	0.0825	0.125
FREQ (HZ):	55.6	19.2	55.6
PD (.001'')	0.77	0.64	0.615
PPA (g):	0.09766	0.05859	0.1107

Peak Vector Sum: 0.155 in/s
Peak Air Pressure: 109.9 dB
 0.0008911 psi @ 1.7 HZ

Shaketable Calibrated

On: 01/15/2015 (UTC -07:00)
By: Vibra-Tech, Inc.
 2700 Holloway Road - Suite 113
 Louisville, KY 40203 U.S.A.



Waveform Graph Scale

Time Scale: 0.1 s
Seismic Scale: +/- 0.1875 in/s
Sound Scale: +/- 0.0023 psi

Velocity Waveform

SSN: 7543 Event: 16

