

Seismic Analysis

Velocity Waveform Analysis

Serial Number: 7438
Firmware Version: 0C-06.01
Event Date: 09/01/2015 11:32:57 (UTC -07:00)
Event number: 11
Recording Time: 5 s
Client: COUNTY OF MARIN
Operation: SAN RAFAEL ROCK QUARRY
Location: 16 MARIN BAY PARK CT.
Distance:
Operator: VIBRA-TECH IP2
Comment: WILLIAM HOSKEN RES.
Seismic Trigger: 0.03 in/s
Sound Trigger: OFF

Additional Info:

j-GEO-01252
 N37 59.524, W122 27.373

Summary Data

	L	T	V
PPV (in/s):	0.0375	0.0225	0.04
FREQ (HZ):	16.7	27.8	45.5
PD (.001'')	0.3025	0.4975	0.3125
PPA (g):	0.02604	0.01953	0.03255

Peak Vector Sum: 0.04 in/s
Peak Air Pressure: 107.5 dB
 0.0007485 psi @ 1.8 HZ

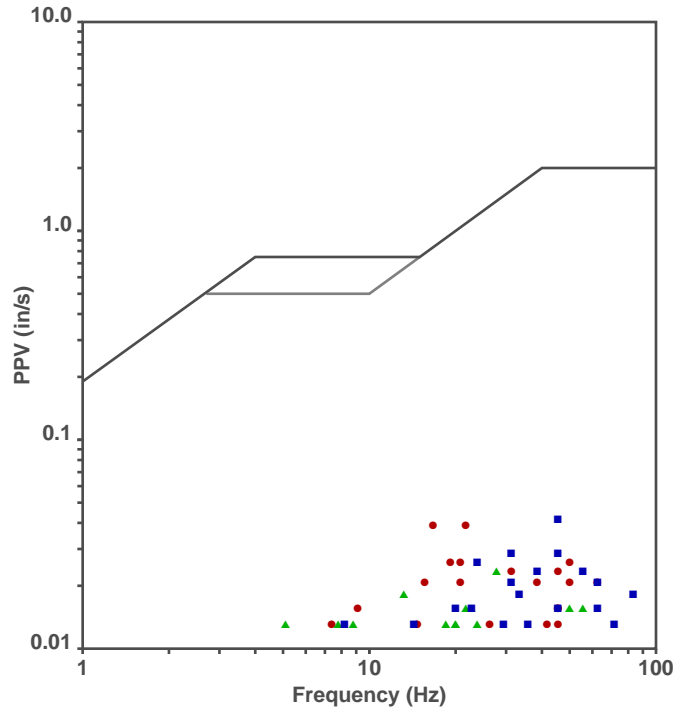
Shaketable Calibrated

On: 01/15/2015 (UTC -07:00)
By: Vibra-Tech, Inc.
 2700 Holloway Road - Suite 113
 Louisville, KY 40203 U.S.A.

USBM Safe Blasting Levels

SSN: 7438 Event: 11

● Longitudinal ▲ Transverse ■ Vertical

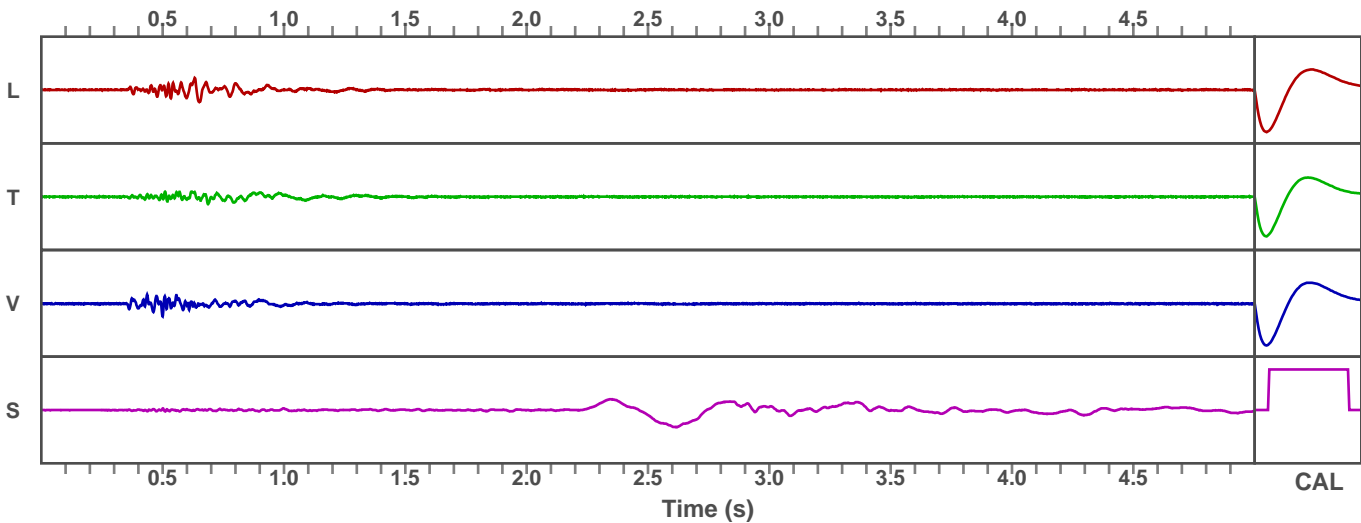


Waveform Graph Scale

Time Scale: 0.1 s
Seismic Scale: +/- 0.16 in/s
Sound Scale: +/- 0.0023 psi

Velocity Waveform

SSN: 7438 Event: 11



Seismic Analysis

Velocity Waveform Analysis

Serial Number: 7543
Firmware Version: 0C-06.01
Event Date: 09/01/2015 11:32:55 (UTC -07:00)
Event number: 15
Recording Time: 5 s
Client: COUNTY OF MARIN
Operation: SAN RAFAEL ROCK QUARRY
Location: ON QUARRY PROPERTY
Distance:
Operator: VIBRA-TECH IP2
Comment:
Seismic Trigger: 0.03 in/s
Sound Trigger: OFF

Additional Info:

j-GEO-01253
 N37 59.481, W122 27.256

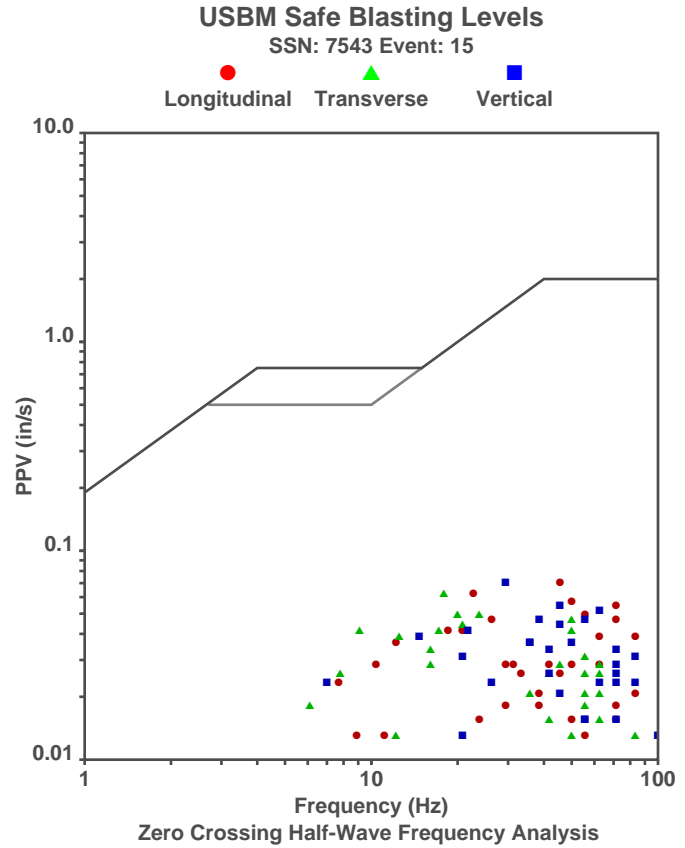
Summary Data

	L	T	V
PPV (in/s):	0.0675	0.06	0.0675
FREQ (HZ):	45.5	17.9	29.4
PD (.001'')	0.48	0.8975	0.5225
PPA (g):	0.05859	0.03906	0.0651

Peak Vector Sum: 0.08 in/s
Peak Air Pressure: 107.8 dB
 0.0007664 psi @ 1.8 HZ

Shaketable Calibrated

On: 01/15/2015 (UTC -07:00)
By: Vibra-Tech, Inc.
 2700 Holloway Road - Suite 113
 Louisville, KY 40203 U.S.A.



Waveform Graph Scale

Time Scale: 0.1 s
Seismic Scale: +/- 0.16 in/s
Sound Scale: +/- 0.0023 psi

Velocity Waveform

SSN: 7543 Event: 15

