

# Seismic Analysis

## Velocity Waveform Analysis

**Serial Number:** 7438  
**Firmware Version:** 0C-06.01  
**Event Date:** 06/02/2015 11:32:05 (UTC -07:00)  
**Event number:** 8  
**Recording Time:** 5 s  
**Client:** COUNTY OF MARIN  
**Operation:** SAN RAFAEL ROCK QUARRY  
**Location:** 16 MARIN BAY PARK CT.  
**Distance:**  
**Operator:** VIBRA-TECH IP2  
**Comment:** WILLIAM HOSKEN RES.  
**Seismic Trigger:** 0.03 in/s  
**Sound Trigger:** OFF

**Additional Info:**

j-GEO-01252  
 N37 59.524, W122 27.373

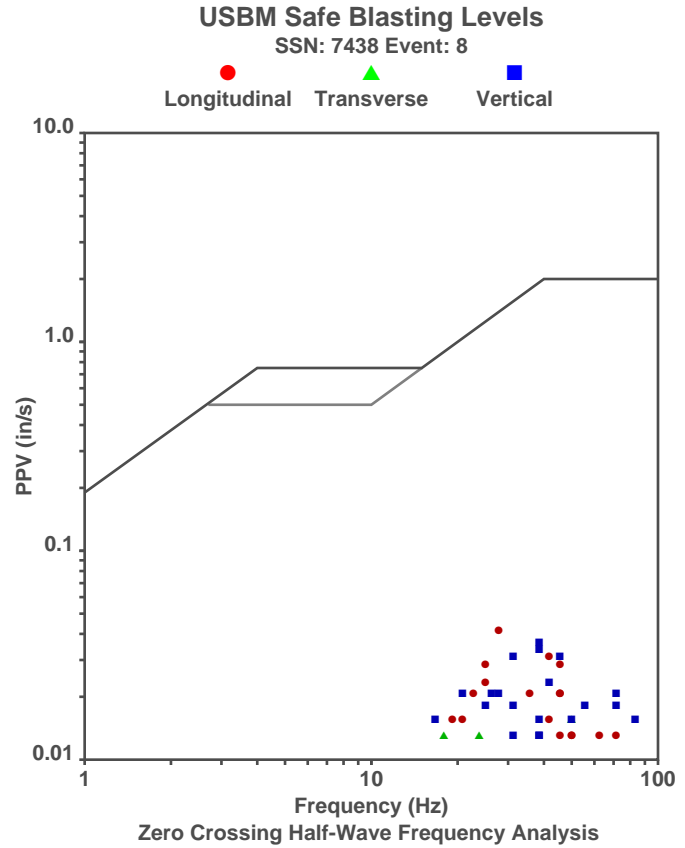
**Summary Data**

	L	T	V
<b>PPV (in/s):</b>	0.04	0.015	0.035
<b>FREQ (HZ):</b>	26.3	50	38.5
<b>PD (.001'')</b>	0.215	0.1825	0.2875
<b>PPA (g):</b>	0.02604	0.01953	0.02604

**Peak Vector Sum:** 0.0425 in/s  
**Peak Air Pressure:** 108.4 dB  
 0.000802 psi @ 4.9 HZ

**Shaketable Calibrated**

**On:** 01/15/2015 (UTC -07:00)  
**By:** Vibra-Tech, Inc.  
 2700 Holloway Road - Suite 113  
 Louisville, KY 40203 U.S.A.

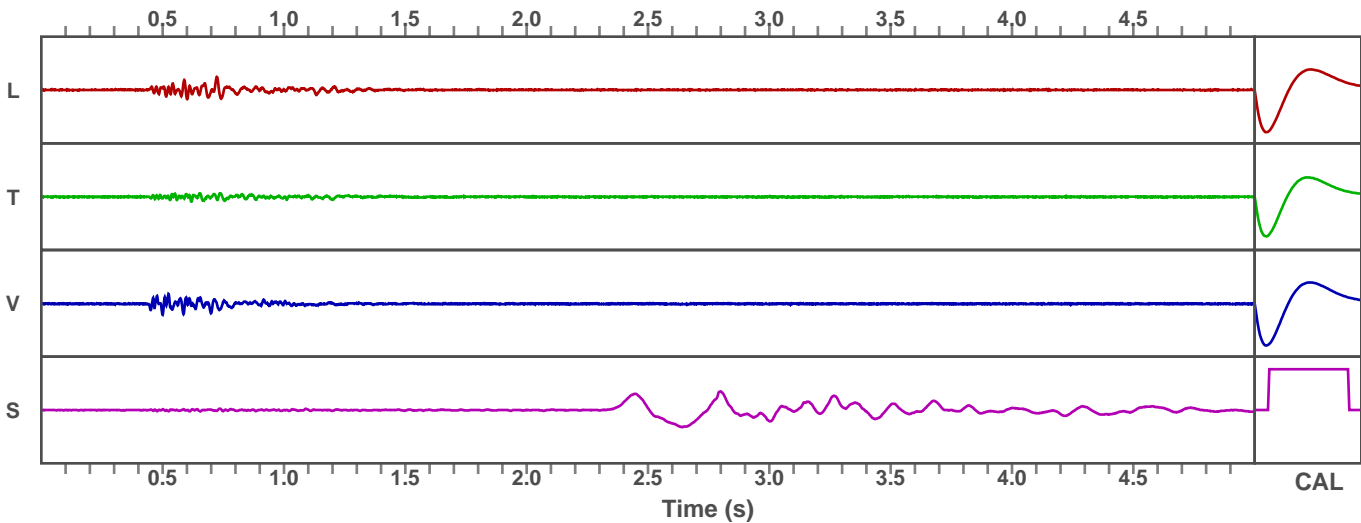


**Waveform Graph Scale**

**Time Scale:** 0.1 s  
**Seismic Scale:** +/- 0.16 in/s  
**Sound Scale:** +/- 0.0023 psi

### Velocity Waveform

SSN: 7438 Event: 8



# Seismic Analysis

## Velocity Waveform Analysis

**Serial Number:** 7543  
**Firmware Version:** 0C-06.01  
**Event Date:** 06/02/2015 11:32:05 (UTC -07:00)  
**Event number:** 10  
**Recording Time:** 5 s  
**Client:** COUNTY OF MARIN  
**Operation:** SAN RAFAEL ROCK QUARRY  
**Location:** ON QUARRY PROPERTY  
**Distance:**  
**Operator:** VIBRA-TECH IP2  
**Comment:**  
**Seismic Trigger:** 0.03 in/s  
**Sound Trigger:** OFF

**Additional Info:**

j-GEO-01253  
N37 59.481, W122 27.256

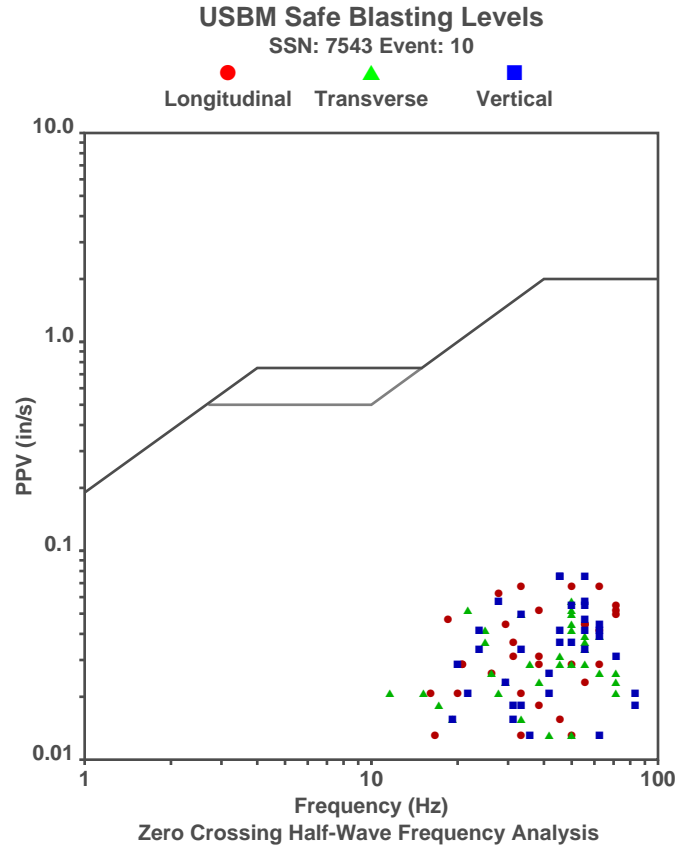
**Summary Data**

	L	T	V
<b>PPV (in/s):</b>	0.065	0.055	0.0725
<b>FREQ (HZ):</b>	62.5	50	55.6
<b>PD (.001''):</b>	0.435	0.4325	0.4525
<b>PPA (g):</b>	0.0651	0.05208	0.07161

**Peak Vector Sum:** 0.1025 in/s  
**Peak Air Pressure:** 107.8 dB  
 0.0007664 psi @ 6.6 HZ

**Shaketable Calibrated**

**On:** 01/15/2015 (UTC -07:00)  
**By:** Vibra-Tech, Inc.  
 2700 Holloway Road - Suite 113  
 Louisville, KY 40203 U.S.A.



**Waveform Graph Scale**

**Time Scale:** 0.1 s  
**Seismic Scale:** +/- 0.16 in/s  
**Sound Scale:** +/- 0.0023 psi

### Velocity Waveform

SSN: 7543 Event: 10

