

Seismic Analysis

Velocity Waveform Analysis

Serial Number: 7438
Firmware Version: 0C-06.01
Event Date: 05/13/2015 11:30:39 (UTC -07:00)
Event number: 7
Recording Time: 5 s
Client: COUNTY OF MARIN
Operation: SAN RAFAEL ROCK QUARRY
Location: 16 MARIN BAY PARK CT.
Distance:
Operator: VIBRA-TECH IP2
Comment: WILLIAM HOSKEN RES.
Seismic Trigger: 0.03 in/s
Sound Trigger: OFF

Additional Info:

j-GEO-01252
 N37 59.524, W122 27.373

Summary Data

	L	T	V
PPV (in/s):	0.05	0.0325	0.045
FREQ (HZ):	22.7	19.2	29.4
PD (.001''):	0.44	0.3275	0.4325
PPA (g):	0.02604	0.01953	0.03906

Peak Vector Sum: 0.055 in/s
Peak Air Pressure: 107.5 dB
 0.0007485 psi @ 2.7 HZ

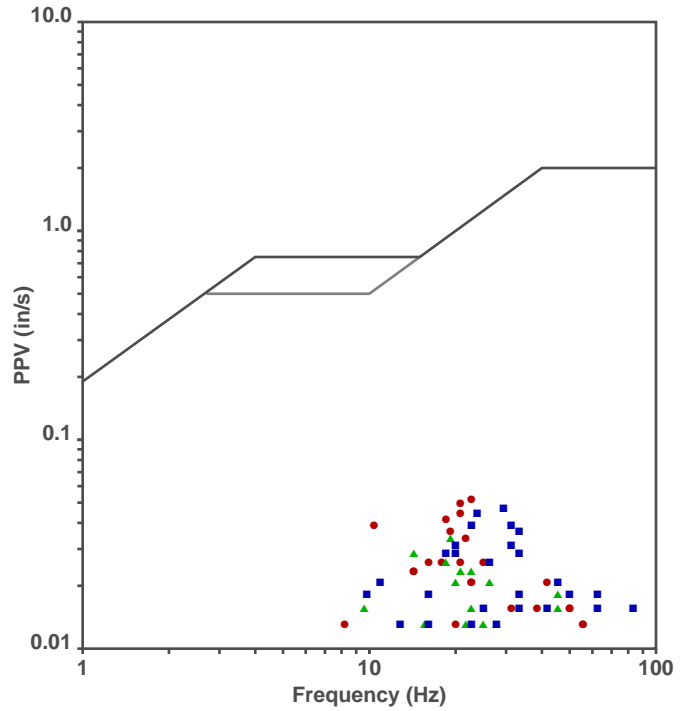
Shaketable Calibrated

On: 01/15/2015 (UTC -07:00)
By: Vibra-Tech, Inc.
 2700 Holloway Road - Suite 113
 Louisville, KY 40203 U.S.A.

USBM Safe Blasting Levels

SSN: 7438 Event: 7

● Longitudinal ▲ Transverse ■ Vertical

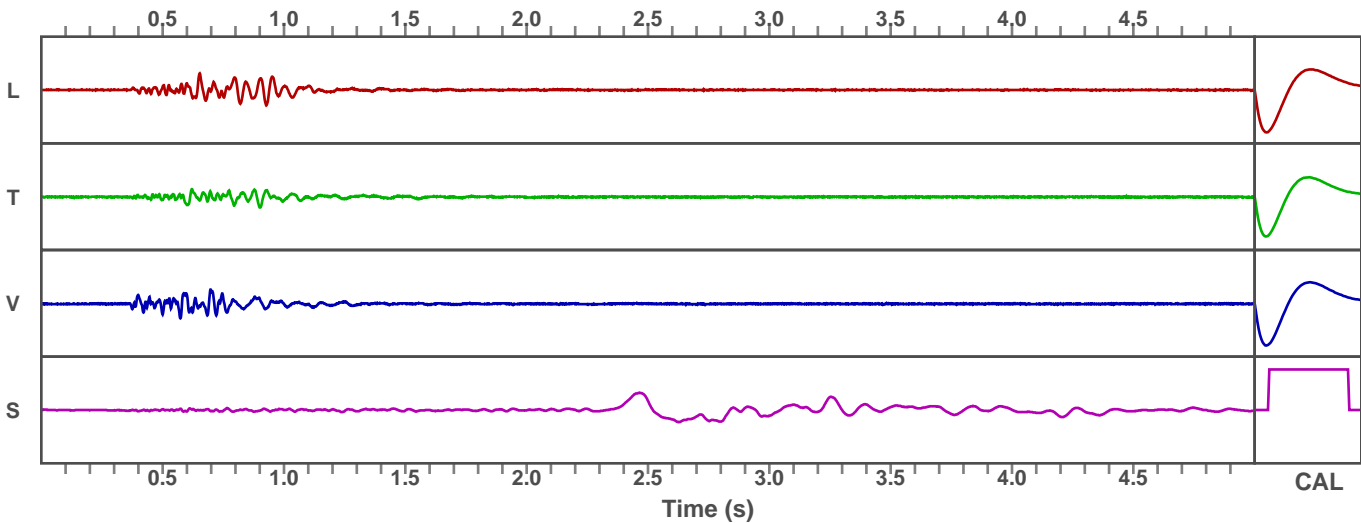


Waveform Graph Scale

Time Scale: 0.1 s
Seismic Scale: +/- 0.16 in/s
Sound Scale: +/- 0.0023 psi

Velocity Waveform

SSN: 7438 Event: 7



Seismic Analysis

Velocity Waveform Analysis

Serial Number: 7543
Firmware Version: 0C-06.01
Event Date: 05/13/2015 11:30:40 (UTC -07:00)
Event number: 7
Recording Time: 5 s
Client: COUNTY OF MARIN
Operation: SAN RAFAEL ROCK QUARRY
Location: ON QUARRY PROPERTY
Distance:
Operator: VIBRA-TECH IP2
Comment:
Seismic Trigger: 0.03 in/s
Sound Trigger: OFF

Additional Info:

j-GEO-01253
 N37 59.481, W122 27.256

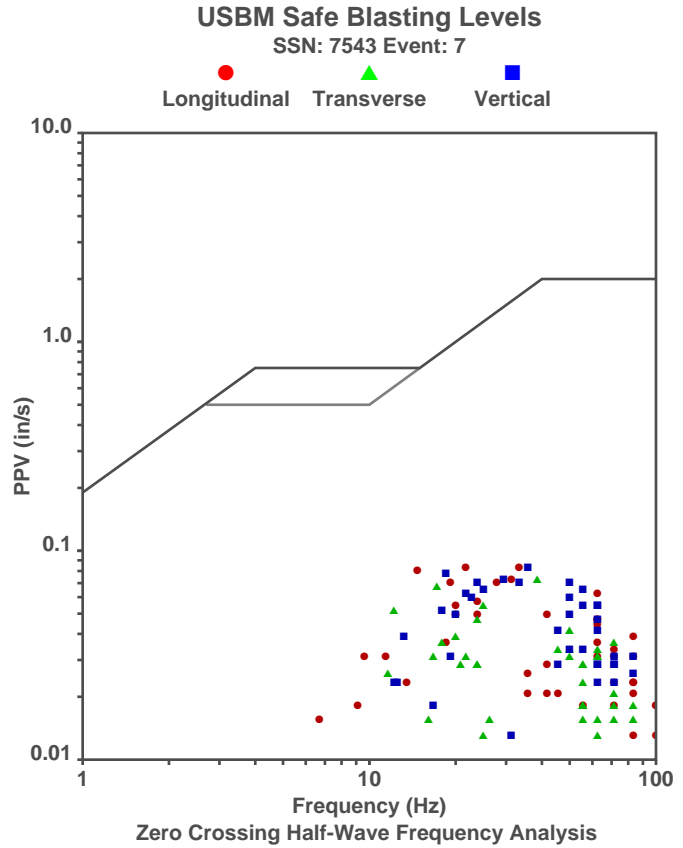
Summary Data

	L	T	V
PPV (in/s):	0.08	0.07	0.08
FREQ (HZ):	33.3	38.5	35.7
PD (.001''):	0.7725	0.68	0.6875
PPA (g):	0.05859	0.04557	0.0651

Peak Vector Sum: 0.095 in/s
Peak Air Pressure: 110.1 dB
 0.0009268 psi @ 2.8 HZ

Shaketable Calibrated

On: 01/15/2015 (UTC -07:00)
By: Vibra-Tech, Inc.
 2700 Holloway Road - Suite 113
 Louisville, KY 40203 U.S.A.



Waveform Graph Scale

Time Scale: 0.1 s
Seismic Scale: +/- 0.16 in/s
Sound Scale: +/- 0.0023 psi

Velocity Waveform

SSN: 7543 Event: 7

