

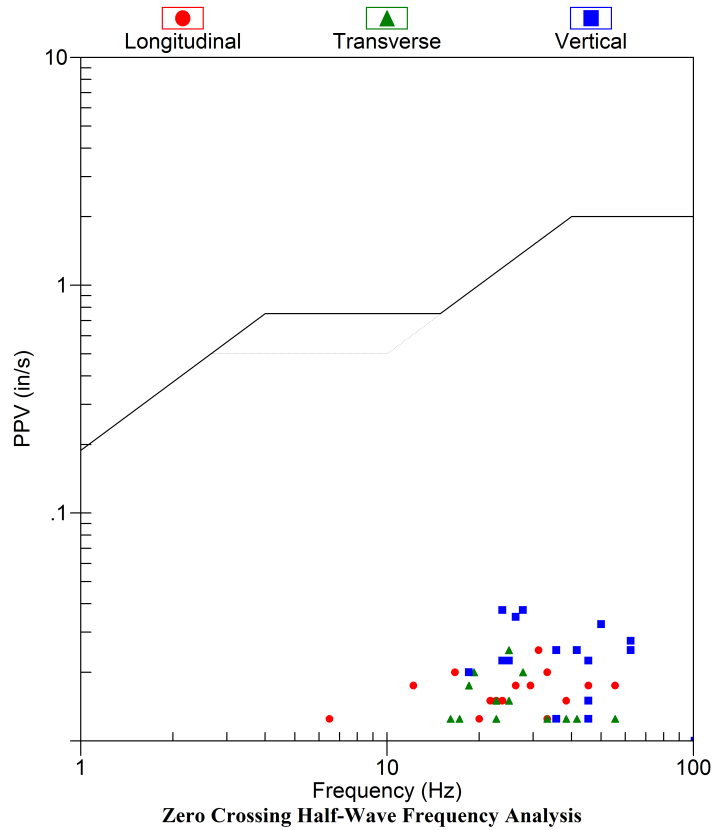
Vibra-Tech Engineers, Inc. Seismic Analysis

Velocity Waveform Analysis

Serial No: 7438 v6.1
Date: 04/30/2015 11:30:22 (UTC-7)
Event No: 6
Record Time: 5.0 s
Client: COUNTY OF MARIN
Operation: SAN RAFAEL ROCK QUARRY
Location: 16 MARIN BAY PARK CT.
Distance:
Operator: VIBRA-TECH IP2
Comment: WILLIAM HOSKEN RES.
Seismic Trigger: 0.030 in/s

USBM Safe Blasting Levels

SN: 7438 Event: 6



	Summary Data		
	L	T	V
PPV (in/s)	0.025	0.025	0.038
FREQ (Hz)	31.3	25.0	23.8
PD (.001")	0.22	0.22	0.32
PPA (g)	0.020	0.020	0.033
Peak Vector Sum :	0.040 in/s		
Peak Air Pressure:	106 db		
	0.00062 PSI @ 1.0 Hz		

Additional Info:

j-GEO-01252
N37 59.524, W122 27.373

Shaketable Calibrated: 01/15/2015

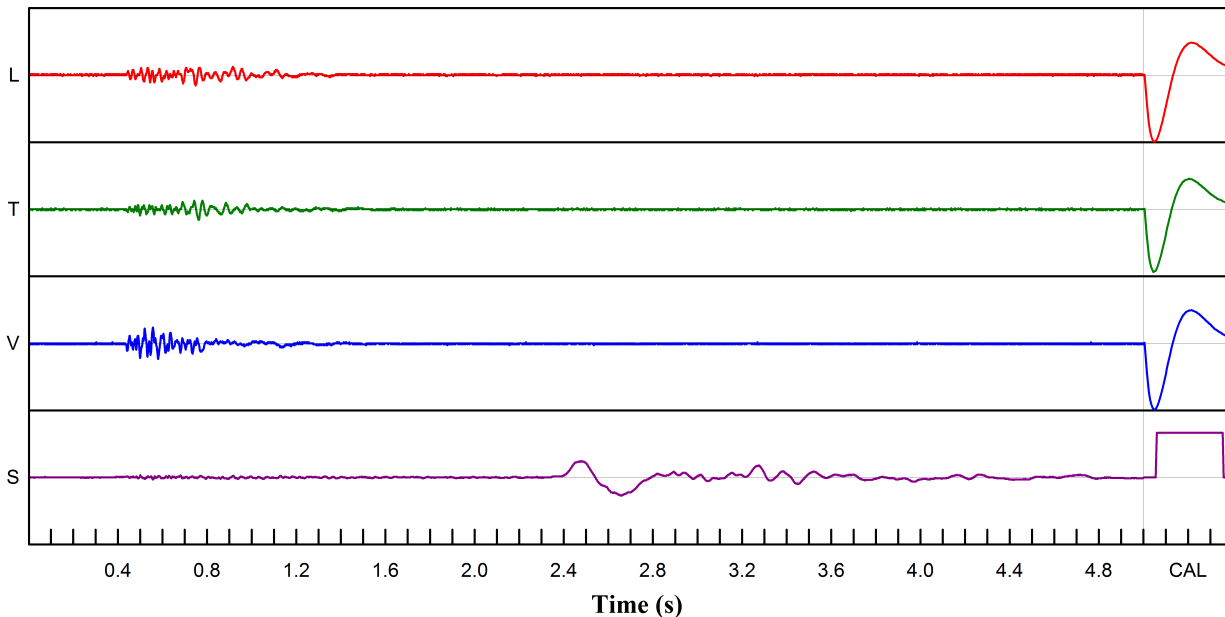
By: Vibra-Tech, Inc.
 2700 Holloway Road - Suite 113
 Louisville, KY 40299 U.S.A.
 TEL: 502.240.9900 FAX: 502.240.9902

Velocity Waveform Graph Scale

Time Scale: 0.100 s
Seismic Scale: +/- 0.160 in/s
Sound Scale: +/- 0.0023 PSI

Velocity Waveform

SN: 7438 Event: 6



Vibra-Tech Engineers, Inc. Seismic Analysis

Velocity Waveform Analysis

Serial No: 7543 v6.1
Date: 04/30/2015 11:30:23 (UTC-7)
Event No: 6
Record Time: 5.0 s
Client: COUNTY OF MARIN
Operation: SAN RAFAEL ROCK QUARRY
Location: ON QUARRY PROPERTY
Distance:
Operator: VIBRA-TECH IP2
Comment:
Seismic Trigger: 0.030 in/s

	Summary Data		
	L	T	V
PPV (in/s)	0.048	0.038	0.070
FREQ (Hz)	22.7	21.7	50.0
PD (.001")	0.45	0.28	0.47
PPA (g)	0.052	0.033	0.059
Peak Vector Sum :	0.075 in/s		
Peak Air Pressure:	106 db		
	0.00062 PSI @ 1.2 Hz		

Additional Info:

j-GEO-01253
 N37 59.481, W122 27.256

Shaketable Calibrated: 01/15/2015

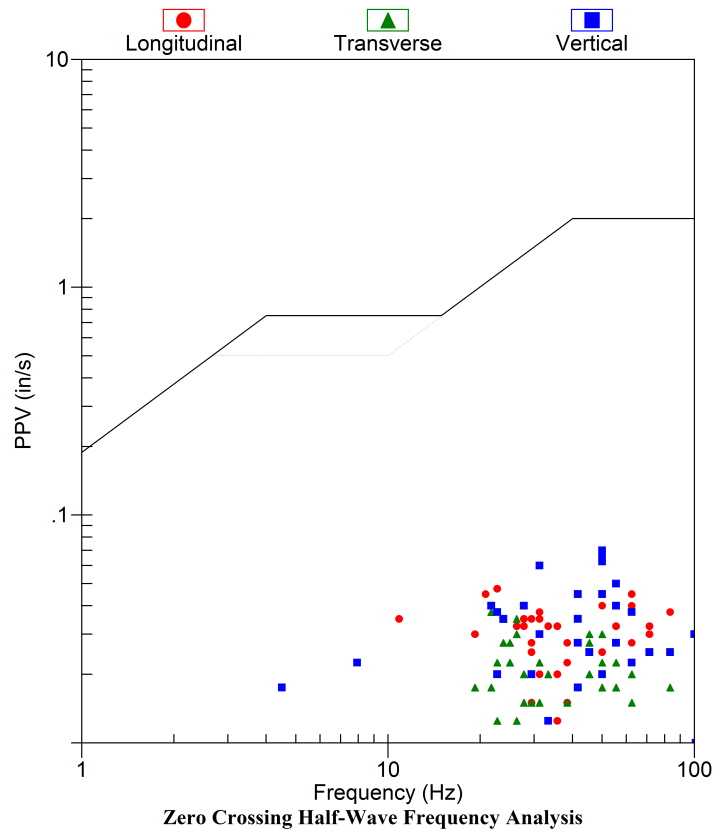
By: Vibra-Tech, Inc.
 2700 Holloway Road - Suite 113
 Louisville, KY 40299 U.S.A.
 TEL: 502.240.9900 FAX: 502.240.9902

Velocity Waveform Graph Scale

Time Scale: 0.100 s
Seismic Scale: +/- 0.160 in/s
Sound Scale: +/- 0.0023 PSI

USBM Safe Blasting Levels

SN: 7543 Event: 6



Velocity Waveform

SN: 7543 Event: 6

