

# Seismic Analysis

## Velocity Waveform Analysis

**Serial Number:** 7438  
**Firmware Version:** 0C-06.01  
**Event Date:** 04/27/2015 12:12:22 (UTC -07:00)  
**Event number:** 5  
**Recording Time:** 5 s  
**Client:** COUNTY OF MARIN  
**Operation:** SAN RAFAEL ROCK QUARRY  
**Location:** 16 MARIN BAY PARK CT.  
**Distance:**  
**Operator:** VIBRA-TECH IP2  
**Comment:** WILLIAM HOSKEN RES.  
**Seismic Trigger:** 0.03 in/s  
**Sound Trigger:** OFF

**Additional Info:**

j-GEO-01252  
 N37 59.524, W122 27.373

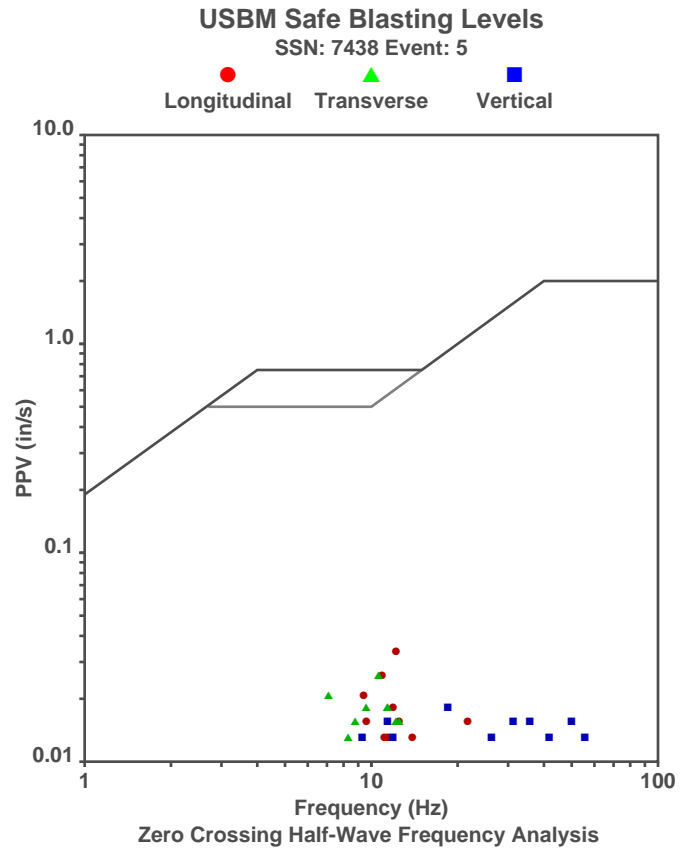
**Summary Data**

	L	T	V
<b>PPV (in/s):</b>	0.0325	0.025	0.0175
<b>FREQ (HZ):</b>	10.6	10.6	18.5
<b>PD (.001''):</b>	0.3475	0.3975	0.2375
<b>PPA (g):</b>	0.01302	0.01302	0.01302

**Peak Vector Sum:** 0.0425 in/s  
**Peak Air Pressure:** 110.5 dB  
 0.000998 psi @ 4.2 HZ

**Shaketable Calibrated**

**On:** 01/15/2015 (UTC -07:00)  
**By:** Vibra-Tech, Inc.  
 2700 Holloway Road - Suite 113  
 Louisville, KY 40203 U.S.A.



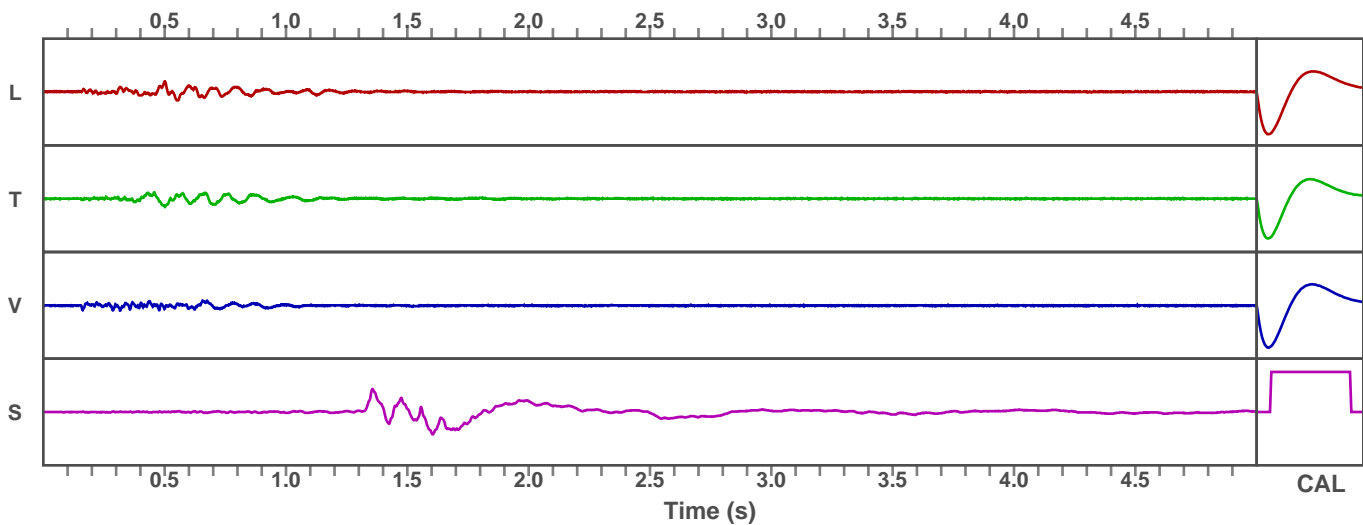
Zero Crossing Half-Wave Frequency Analysis

**Waveform Graph Scale**

**Time Scale:** 0.1 s  
**Seismic Scale:** +/- 0.16 in/s  
**Sound Scale:** +/- 0.0023 psi

### Velocity Waveform

SSN: 7438 Event: 5



# Seismic Analysis

## Velocity Waveform Analysis

**Serial Number:** 7543  
**Firmware Version:** 0C-06.01  
**Event Date:** 04/27/2015 12:12:23 (UTC -07:00)  
**Event number:** 5  
**Recording Time:** 5 s  
**Client:** COUNTY OF MARIN  
**Operation:** SAN RAFAEL ROCK QUARRY  
**Location:** ON QUARRY PROPERTY  
**Distance:**  
**Operator:** VIBRA-TECH IP2  
**Comment:**  
**Seismic Trigger:** 0.03 in/s  
**Sound Trigger:** OFF

**Additional Info:**

j-GEO-01253  
 N37 59.481, W122 27.256

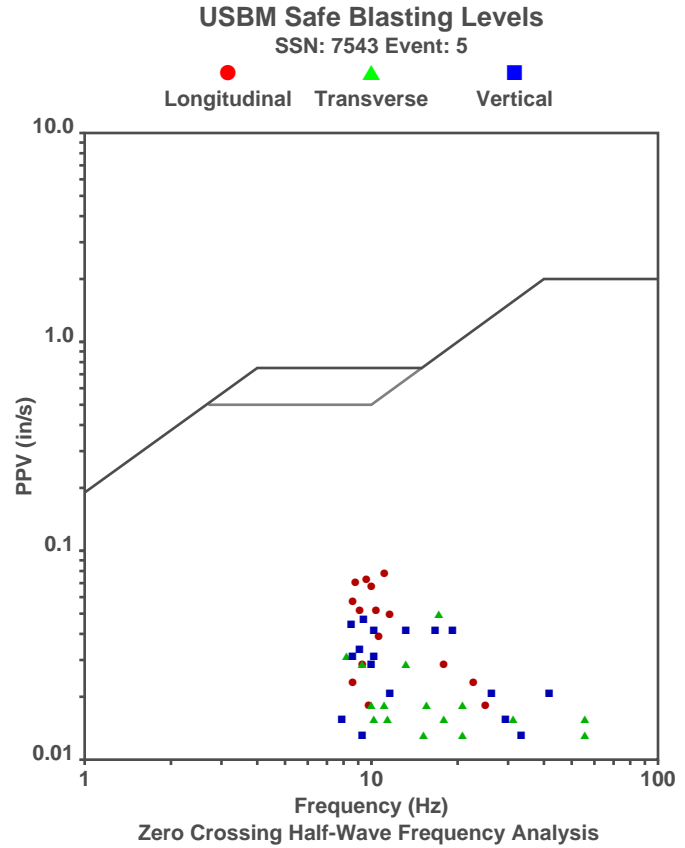
**Summary Data**

	L	T	V
<b>PPV (in/s):</b>	0.075	0.0475	0.045
<b>FREQ (HZ):</b>	10.9	17.2	7.8
<b>PD (.001''):</b>	1.103	0.5425	0.665
<b>PPA (g):</b>	0.02604	0.01302	0.02604

**Peak Vector Sum:** 0.0775 in/s  
**Peak Air Pressure:** 116.3 dB  
 0.001943 psi @ 8.5 HZ

**Shaketable Calibrated**

**On:** 01/15/2015 (UTC -07:00)  
**By:** Vibra-Tech, Inc.  
 2700 Holloway Road - Suite 113  
 Louisville, KY 40203 U.S.A.



**Waveform Graph Scale**

**Time Scale:** 0.1 s  
**Seismic Scale:** +/- 0.16 in/s  
**Sound Scale:** +/- 0.0023 psi

### Velocity Waveform

SSN: 7543 Event: 5

