

Seismic Analysis

Velocity Waveform Analysis

Serial Number: 7438
Firmware Version: 0C-06.01
Event Date: 04/07/2015 11:45:23 (UTC -07:00)
Event number: 4
Recording Time: 5 s
Client: COUNTY OF MARIN
Operation: SAN RAFAEL ROCK QUARRY
Location: 16 MARIN BAY PARK CT.
Distance:
Operator: VIBRA-TECH IP2
Comment: WILLIAM HOSKEN RES.
Seismic Trigger: 0.03 in/s
Sound Trigger: OFF

Additional Info:

j-GEO-01252
 N37 59.524, W122 27.373

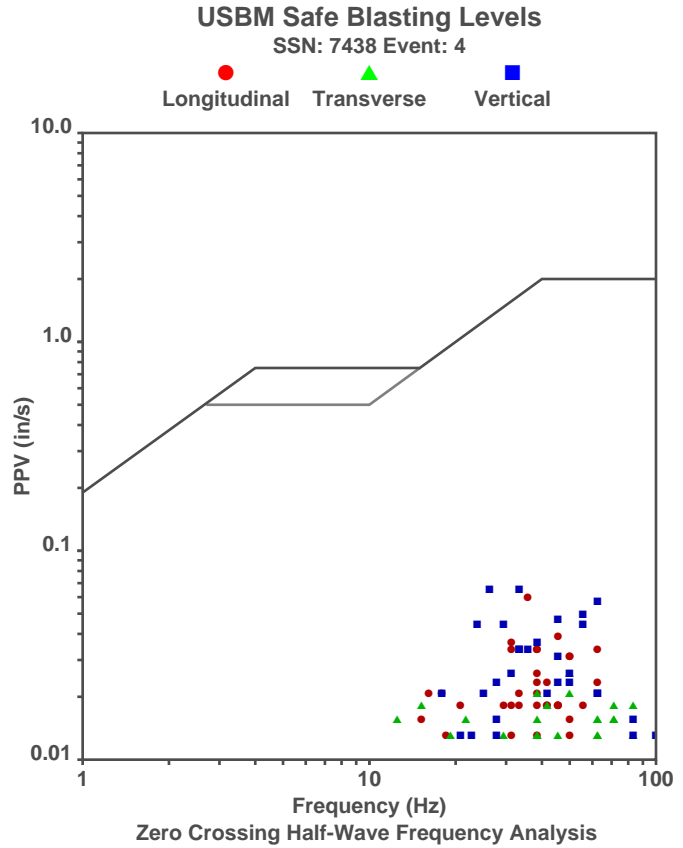
Summary Data

	L	T	V
PPV (in/s):	0.0575	0.025	0.0625
FREQ (HZ):	33.3	45.5	33.3
PD (.001'')	0.255	0.38	0.2925
PPA (g):	0.03255	0.02604	0.0651

Peak Vector Sum: 0.0775 in/s
Peak Air Pressure: 104 dB
 0.0005347 psi @ 1.4 HZ

Shaketable Calibrated

On: 01/15/2015 (UTC -07:00)
By: Vibra-Tech, Inc.
 2700 Holloway Road - Suite 113
 Louisville, KY 40203 U.S.A.

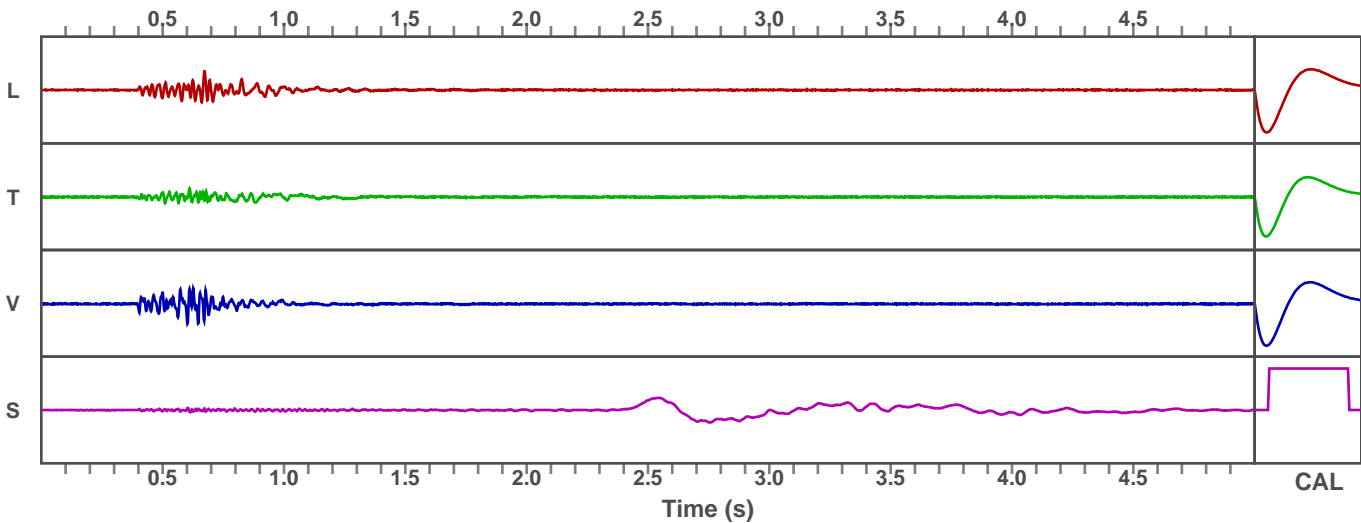


Waveform Graph Scale

Time Scale: 0.1 s
Seismic Scale: +/- 0.16 in/s
Sound Scale: +/- 0.0023 psi

Velocity Waveform

SSN: 7438 Event: 4



Seismic Analysis

Velocity Waveform Analysis

Serial Number: 7543
Firmware Version: 0C-06.01
Event Date: 04/07/2015 11:45:28 (UTC -07:00)
Event number: 4
Recording Time: 5 s
Client: COUNTY OF MARIN
Operation: SAN RAFAEL ROCK QUARRY
Location: ON QUARRY PROPERTY
Distance:
Operator: VIBRA-TECH IP2
Comment:
Seismic Trigger: 0.03 in/s
Sound Trigger: OFF

Additional Info:

j-GEO-01253
 N37 59.481, W122 27.256

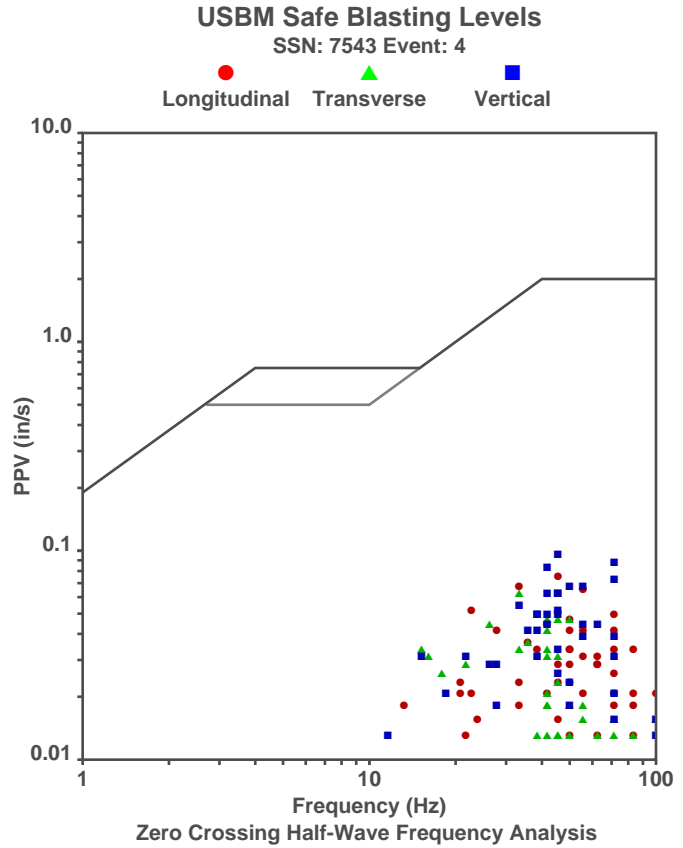
Summary Data

	L	T	V
PPV (in/s):	0.0725	0.06	0.0925
FREQ (HZ):	45.5	31.3	45.5
PD (.001'')	0.4975	0.65	0.405
PPA (g):	0.05859	0.03906	0.09766

Peak Vector Sum: 0.0975 in/s
Peak Air Pressure: 105.5 dB
 0.0006238 psi @ 2.2 HZ

Shaketable Calibrated

On: 01/15/2015 (UTC -07:00)
By: Vibra-Tech, Inc.
 2700 Holloway Road - Suite 113
 Louisville, KY 40203 U.S.A.



Waveform Graph Scale

Time Scale: 0.1 s
Seismic Scale: +/- 0.16 in/s
Sound Scale: +/- 0.0023 psi

Velocity Waveform

SSN: 7543 Event: 4

