

# Seismic Analysis

## Velocity Waveform Analysis

**Serial Number:** 8154  
**Firmware Version:** 0C-05.11  
**Event Date:** 10/28/2014 12:11:51 (UTC -07:00)  
**Event number:** 116  
**Recording Time:** 5 s  
**Client:** COUNTY OF MARIN  
**Operation:** SAN RAFAEL ROCK QUARRY  
**Location:** 16 MARIN BAY PARK CT.  
**Distance:**  
**Operator:** VIBRA-TECH IP2  
**Comment:** WILLIAM HOSKEN RES.  
**Seismic Trigger:** 0.03 in/s  
**Sound Trigger:** OFF

**Additional Info:**

j-GEO-01252  
 N37 59.524, W122 27.373

**Summary Data**

	L	T	V
<b>PPV (in/s):</b>	0.055	0.0275	0.055
<b>FREQ (HZ):</b>	18.5	22.7	22.7
<b>PD (.001'')</b>	0.445	0.3675	0.4
<b>PPA (g):</b>	0.02604	0.01953	0.04557

**Peak Vector Sum:** 0.0675 in/s  
**Peak Air Pressure:** 109.6 dB  
 0.0008733 psi @ 1.3 HZ

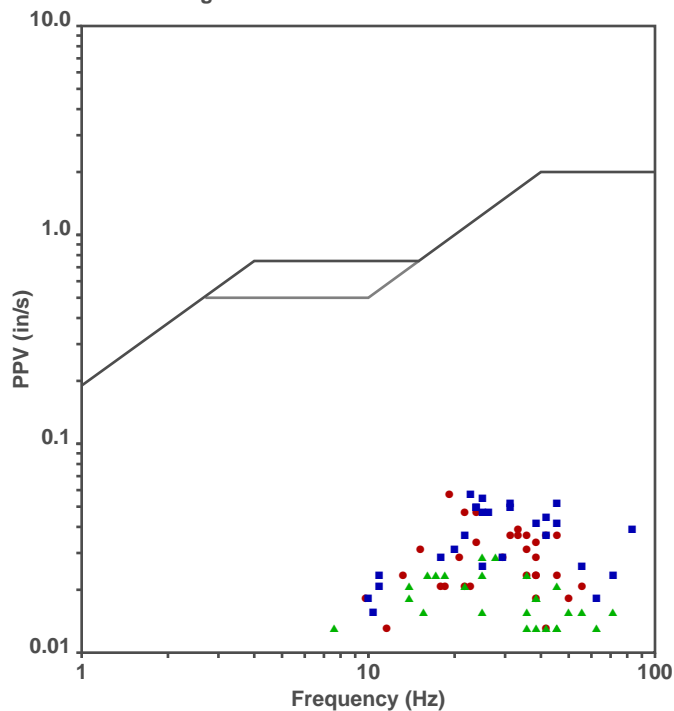
**Shaketable Calibrated**

**On:** 01/23/2014 (UTC -07:00)  
**By:** Vibra-Tech, Inc.  
 2700 Holloway Road - Suite 113  
 Louisville, KY 40203 U.S.A.

**USBM Safe Blasting Levels**

SSN: 8154 Event: 116

● Longitudinal    ▲ Transverse    ■ Vertical



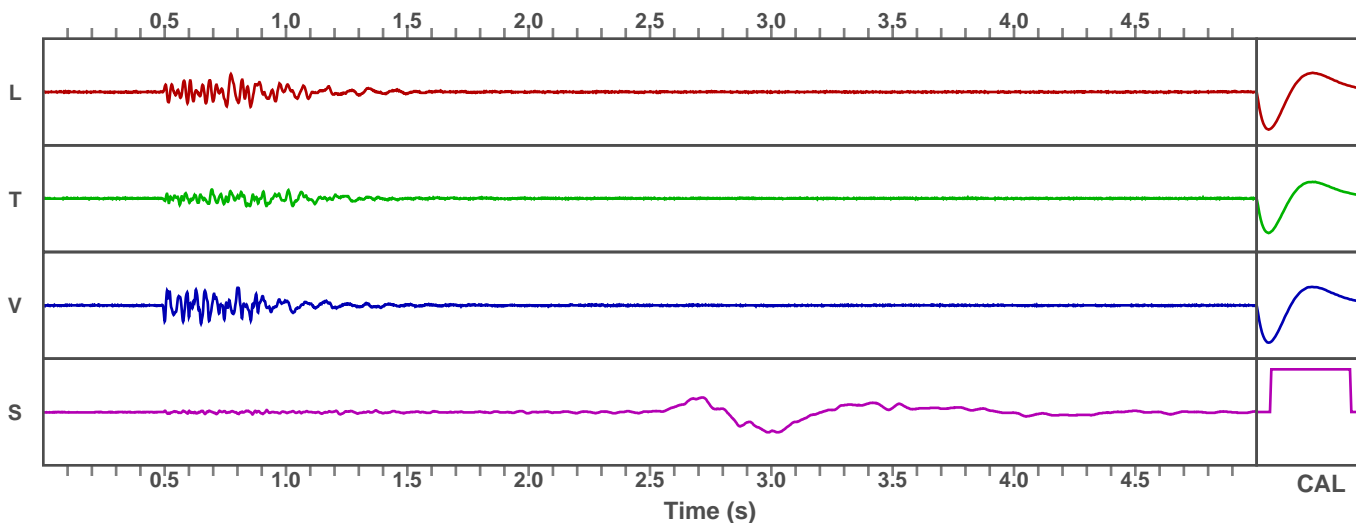
Zero Crossing Half-Wave Frequency Analysis

**Waveform Graph Scale**

**Time Scale:** 0.1 s  
**Seismic Scale:** +/- 0.16 in/s  
**Sound Scale:** +/- 0.0023 psi

**Velocity Waveform**

SSN: 8154 Event: 116



# Seismic Analysis

## Velocity Waveform Analysis

**Serial Number:** 9668  
**Firmware Version:** 0C-05.18  
**Event Date:** 10/28/2014 12:11:49 (UTC -07:00)  
**Event number:** 16  
**Recording Time:** 5 s  
**Client:** COUNTY OF MARIN  
**Operation:** SAN RAFAEL ROCK QUARRY  
**Location:** ON QUARRY PROPERTY  
**Distance:**  
**Operator:** VIBRA-TECH IP2  
**Comment:**  
**Seismic Trigger:** 0.03 in/s  
**Sound Trigger:** OFF

**Additional Info:**

j-GEO-01253  
 N37 59.481, W122 27.256

**Summary Data**

	L	T	V
<b>PPV (in/s):</b>	0.0825	0.08	0.1075
<b>FREQ (HZ):</b>	21.7	15.6	38.5
<b>PD (.001''):</b>	0.7275	0.6875	0.615
<b>PPA (g):</b>	0.05859	0.03906	0.07161

**Peak Vector Sum:** 0.11 in/s  
**Peak Air Pressure:** 106.6 dB  
 0.0006951 psi @ 2 HZ

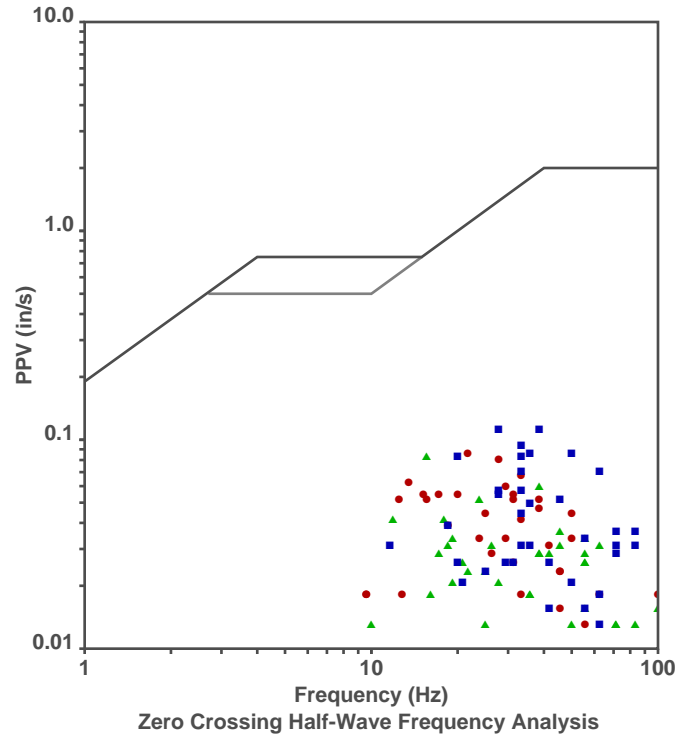
**Shaketable Calibrated**

**On:** 01/29/2014 (UTC -07:00)  
**By:** Vibra-Tech, Inc.  
 2700 Holloway Road - Suite 113  
 Louisville, KY 40203 U.S.A.

**USBM Safe Blasting Levels**

SSN: 9668 Event: 16

● Longitudinal    ▲ Transverse    ■ Vertical



**Waveform Graph Scale**

**Time Scale:** 0.1 s  
**Seismic Scale:** +/- 0.16125 in/s  
**Sound Scale:** +/- 0.0023 psi

**Velocity Waveform**

SSN: 9668 Event: 16

