

Construction / Safety Monitoring
Gross Field Pavement Project
Marin County Airport
Novato, CA

November 14, 2017 Tuesday
Monitoring / Air Sampling for
Construction

10



Photo 1

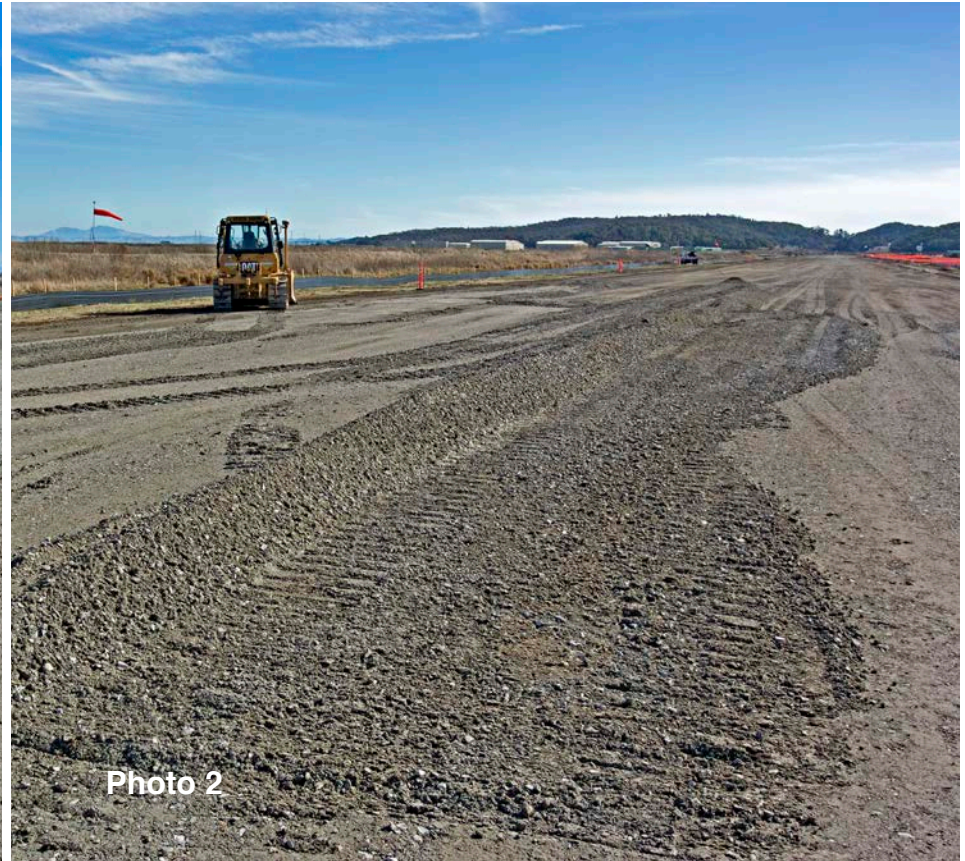


Photo 2

The final or top layer of road base transport / placement has started today with a number of double belly dumps arriving at the site. The trucks arrive at the North end of the runway 31 and deposit their load. The road grader and compactor are working the rock into the final 5 inch thick layer.

The asbestos regulated areas have been removed from the taxiways and runways. The asbestos abatement contractor was starting to demobilize, since they will not be needed for the paving phase of the work.

The requirement for site watering shall be limited to the stockpile only. Forecast rains may allow for lesser site watering operations. Photo 1 shows the view along the Western edge of the runway looking to the North. A set of double belly dumps are heading back to the rock quarry for an additional load.

Photo 2 shows the crawler / dozer along the Eastern side of the runway. The gray aggregate is the recently imported non asbestos road base. No air samples were collected today, due to the lack of exposed NOA road base at this part of the site.

MDA

**Monte Deignan
& Associates**
Environmental Consulting
Larkspur, CA