

MAY 18, 2021

MARIN 9 TO 25 CHARTER

VERSION 3

Marin 9 to 25 Charter

Table of Contents

| | |
|---|------------------------------|
| <i>Vision</i> | 2 |
| <i>Aim</i> | 2 |
| <i>Principles</i> | 2 |
| <i>Organizational Model</i> | 2 |
| <i>Steering Committee</i> | 2 |
| Description | 2 |
| Composition..... | 3 |
| Meeting Cadence | 3 |
| <i>Working Groups</i> | 3 |
| Description | 3 |
| Composition..... | 3 |
| Meeting Cadence | 4 |
| <i>Program Advisors and Backbone Staff</i> | 4 |
| Program Advisors | Error! Bookmark not defined. |
| Backbone Staff | Error! Bookmark not defined. |
| Meeting Cadence | 4 |

Vision

Marin 9 to 25 is an action-oriented collective of Marin County youth and adults dedicated to realizing positive and equitable outcomes for youth age 9 to 25.

Aim

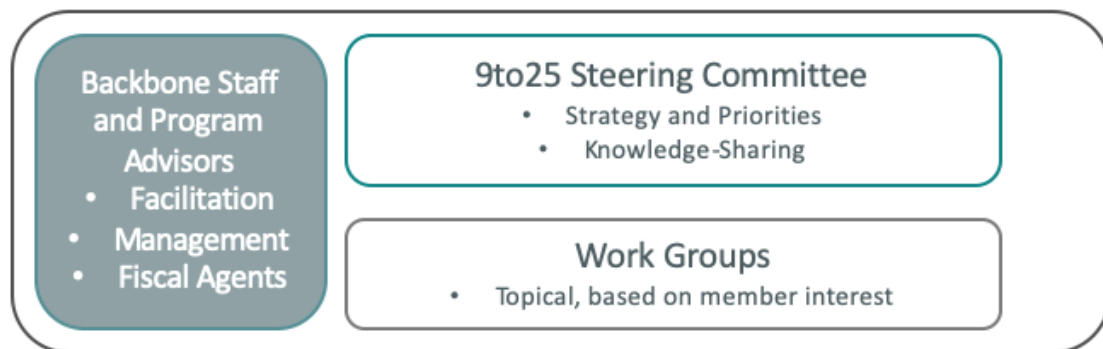
Marin 9 to 25's aim is to ensure that all young people in Marin County can meet their physical, mental and social health needs.

Principles

In shaping our agenda and approaching our work, we will support activities that align with our principles:

- **Shared Agenda:** Participants share the same vision, problem statement and approach.
- **Coordinated Activities and Communications:** Participants coordinate project activities, promoted by frequent and structured communications.
- **Aligned Understanding of Youth Needs and Measurement:** Participants work to identify youth needs set agreed-upon common metrics for measuring our programs' impact.
- **Prevent Duplication of Efforts.** Participants are committed to reducing service delivery duplication and inefficiencies to better streamline care and reduce overall cost of care.
- **Ongoing Public and Private Stakeholder Buy-In:** County leaders serve as the backbone for Marin 9 to 25 sustainability, with private organizations as key partners.

Organizational Model



Steering Committee

The Steering Committee will guide the work of Marin 9 to 25 and bring together stakeholders that represent the diversity of Marin County and serve as a forum to share ideas, issues and opportunities relating to the well-being of Marin youth.

Description

This committee adopts the annual plan and priorities. Members of the committee determine workgroup subject areas and track outcomes. The meetings allow members to discuss youth needs, forge relationships, and share the work being done across the county.

Composition

The aim is for at least 50% of Steering Committee to be youth members. Each Organizational member is encouraged to bring along at least one youth member. Other recruitment efforts will be used to ensure that Youth representation is equitable and represents the diversity of our county's youth. An evaluation of youth participation will be included as a metric for success.

Characteristics of organizations represented on the Steering Committee include:

- Outsized impact on youth well being
- Represent an underserved community
- Demonstrated clear success in engaging with or impacting youth
- Work toward equity and diversity
- Representative of community served (geography, demographics)

Steering Committee Chair: The Steering Committee will determine the Steering Committee Co-Chairs, made up of one adult and one youth. The co-chairs serve a one year term.

- The co-chairs help set the meeting agendas, lead Steering Team meetings, and participate in coalition program meetings.
- The co-chairs are responsible for nominating their replacement before the end of their term.
- A \$500 stipend is provided to the youth co-chair for the length of their term.

Meeting Cadence

The Steering Committee will meet quarterly.

Budget

- The budget is approved annually, in alignment with the county fiscal year.
- The backbone staff reviews the budget monthly as a standard agenda item.

Work Groups

Work Groups are action-oriented temporary committees created by the Steering Committee to ensure progress is made on specific collective impact projects.

Description

Work groups are not meant to be permanent, rather they are intended to address an identified issue by facilitating collaboration between stakeholders. Any project launched by a work group should eventually be housed under the relevant participating membership organizations.

Composition

The composition of each working group will be dependent on the project and will be determined by the Steering Committee.

Initial work group ideas:

- Health plan coordination and payment
- Metrics and evaluation
- Youth and Unite Us

Meeting Cadence

The frequency of working group meetings will vary depending on need.

Program Advisors and Backbone Staff

Program advisors and the backbone staff represent a cross-section of county leadership and staff are contracted to facilitate the successful coordination of the Marin 9 to 25 coalition.

Description

Program advisors are responsible for setting priorities and developing an annual strategic plan. In addition, Program advisors are available to address program issues and manage risks. Program advisor(s) also have fiscal oversight and manage the program budget.

Backbone staff are responsible for setting meeting agenda for working groups, the Advisory Committee and the Steering Committee. They are essential to Marin 9 to 25's work as they facilitate collaboration between members through working groups and work to connect the dots between organizations. The backbone staff leads the effort for grant-seeking and grant-writing, which may lead to workgroup(s) dedicated to a particular grant request.

Composition

Program advisors will include 4-5 county representatives. Current representatives include:

- Maureen DeNueva-Marsh, County Administrator's Office
- Samantha Klein, Marin County Probation
- Nancy Vernon, Board of Supervisors
- Chandrika Zager, Behavioral Health and Recovery Services

Backbone staff from BluePath Health includes:

- Lauren Jacobson, Program Manager (contact: lauren.jacobson@bluepathhealth.com)
This role sets meeting agendas, facilitates collaboration, oversees workgroups, and leads outreach for Steering Committee and Program Advisors.
- Ciara Keegan, Analyst
This role supports the efforts of the Program Manager, conducts research, and compiles materials for meetings.
- Robby Franceschini, Policy Director
This role oversees the Program Manager and serves as an advisor on issues pertaining to the Steering Committee.
- Timi Leslie, Advisor
This role oversees all efforts and provides guidance on the work.

Meeting Cadence

Program advisors and backbone staff meet monthly.