

Marin County Watershed Program

Presentation to the Board of Supervisors
July 12, 2016

MarinWatersheds.org

Organization

Flood Control

Flood control and water resources

- Water Resources
- Engineering
- Project Management
- Flood control channel and facilities maintenance
- Support to DPW's FEMA program

Watershed and sea level rise

- Communications and engagement
- Project management
- Grant support
- GIS and asset management
- Fish passage
- Environmental compliance

Prepare for sea level rise

Bayshore Vulnerability Assessment release: summer 2016

Coordination with all 11 cities and towns, local agencies: fire, police, water, sanitation, transportation, utilities, property owners, environmental groups, and more



Marzanita-December 2014



Video production by Soave House Media



Goals

- Partner with cities, towns, agencies, and non-profits
- System-wide analysis of flood protection options
- Identify multi-benefit projects
- Protect, enhance, and restore habitat and water quality
- Improve efficiency of flood control maintenance operations
- Evaluate the beneficial reuse of dredged material
- Identify sea level rise adaptation strategies
- Work with the natural watershed processes

Funding opportunities



Fish passage restoration



Restore habitat



Multi-benefit projects: sediment reuse



Working with natural processes: Siltation Beach



Partnerships: Novato



Thank you!

Liz Lewis, planning manager
lizlewis@marincounty.org
marinwatersheds.org

Marin County Watershed Program

Presentation to the Board of Supervisors
July 12, 2016

MarinWatersheds.org

Organization



Prepare for sea level rise

Bayshore Vulnerability Assessment release: summer 2016

Coordination with all 11 cities and towns, local agencies: fire, police, water, sanitation, transportation, utilities, property owners, environmental groups, and more





Funding opportunities

Proposition 1: Water Bond

Top of fiscal middle watershed based on State Water Board groundwater resources, water use and recycling.

State Coastal Conservancy to develop a water use permit and rule book.

Dept of Water Resources to expand regional water management.

Watershed Conservation Board ocean flow management.

Measure AA

Fish passage restoration

10 projects since 2005

\$3 million investment

67% grant funded, 33% County match

San Geronimo Creek SDR

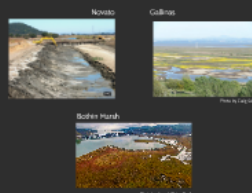
Restore habitat



Goals

- Partner with cities, towns, agencies, and non-profits
- System-wide analysis of flood protection options
- Identify multi-benefit projects
- Protect, enhance, and restore habitat and water quality
- Improve efficiency of flood control maintenance operations
- Evaluate the beneficial reuse of dredged material
- Identify sea level rise adaptation strategies
- Work with the natural watershed processes

Multi-benefit projects: sediment reuse



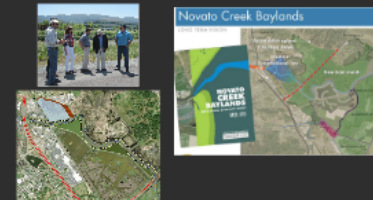
Working with natural processes: Stinson Beach

42 stakeholder and community meetings

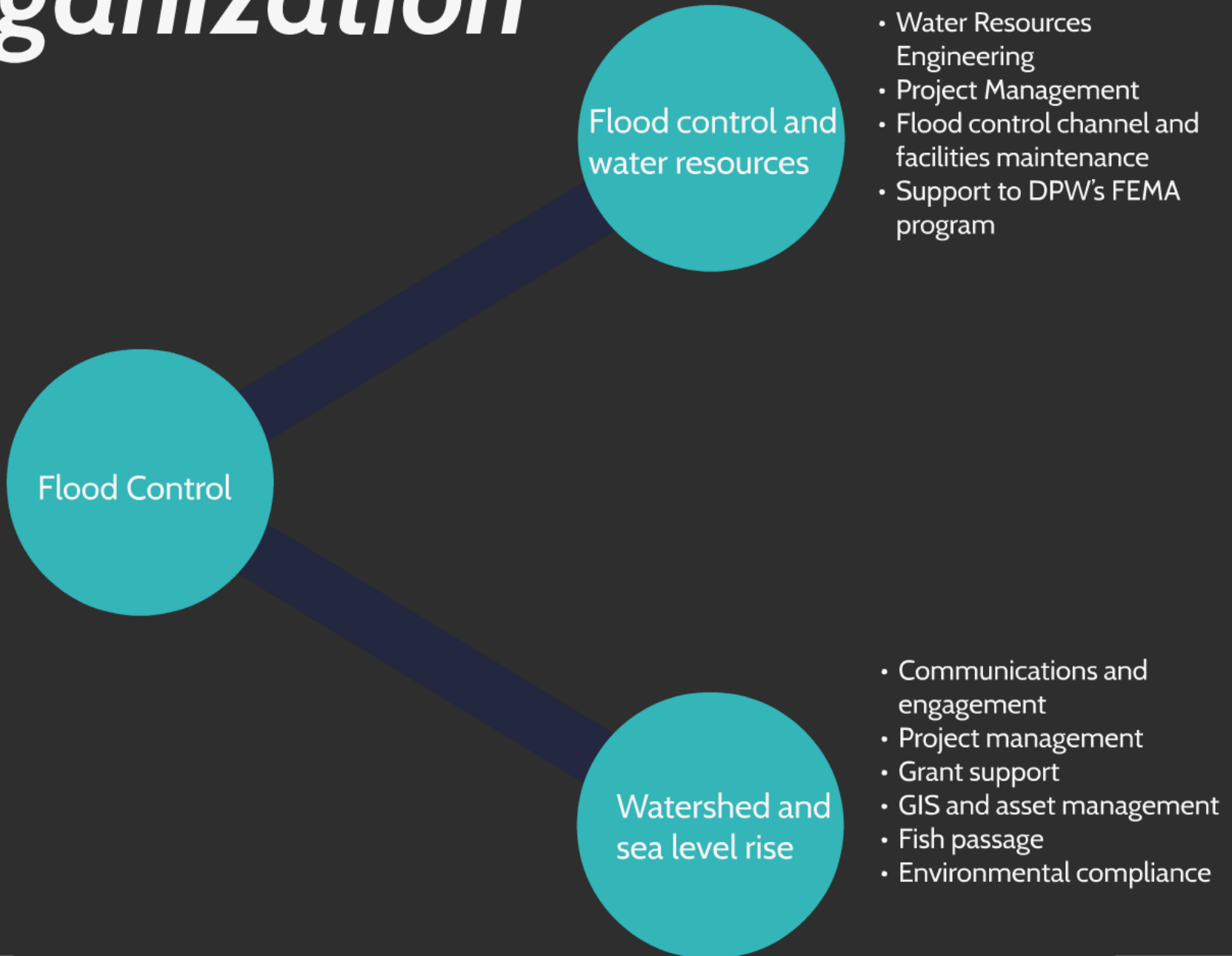
2014 election: 57% support for a \$250/20 year tax

Continuing the dialogue with the community. National Park Service, C-SMART

Partnerships: Novato



Organization



Outreach and engagement





Novato
Creek

Gallinas
Creek

Richardson
Bay
Southern
Marin

Stinson
Beach



165+

meetings to identify
issues, develop project
alternatives, and engage
our partners

Marin County Watershed Program

A Project of the Marin County



Program Participants

Flood & Stormwater Protection

Learn More

Marin Watersheds.org

Redesign coming in 2016

Top content in 2015

1. Home page
2. Ross Valley
3. Advisory Board
4. Plants, wildlife, fish
5. What is a healthy watershed?



Photo: Tom Taylor



News

Draft Upper Gallinas Restoration Memo



Upper Gallinas Creek was channelized into a concrete trapezoidal structure in the 1950s. A natural creek could provide wildlife habitat and enhanced walking and bicycling opportunities. Obstacles to restoration include cost, ability to convey storm flows, and land ownership. [Read the draft report.](#)

Tidal Flooding in Marin



Southern Marin Watershed Guide



Public comments due May 1st

Public comments are welcome on the Southern Marin Watershed Guide. The text and layout are open for comments and we are in the process of finalizing maps and images. Please send comments to [Chris Choo](#), watershed planner for Southern Marin.

Have photos of Southern Marin that you'd like to share for the Guide and other publications? If so, please contact Chris.

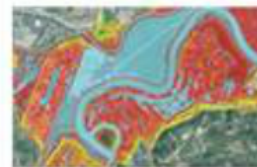
Several Flood Control pumps are being cleaned this summer to maintain optimal performance during winter storms. This photo shows a pump intake, which will be sand-blasted and coated before re-installation.



Novato Watershed Program Releases Alternatives Analysis



Gallinas Watershed Program: Sea Level Rise Assessment



The Lower Gallinas Creek Sea Level Rise Vulnerability Assessment provides a look at what may be in store for communities on the Bay's edge. [Read the Vulnerability Assessment.](#)

Weather and Tides

Check the National Weather Service's [precipitation outlook](#). Track the latest on El Nino at NOAA's Climate Protection Center.

See NOAA's Tides & Currents [website](#) for the latest tide information. Upcoming [data](#) with tide predicted to

Find Your Watershed



Get Involved!

Would you like to receive notifications via email?

[Sign Up Now](#)

What is the Purpose of the Watershed Program?

The Program provides a framework to integrate flood protection and environmental restoration with public and private partners to protect and enhance Marin's watersheds.

Flood Control Zone Meetings

Advisory Board meeting information is available online. The library has downloadable meeting agendas, staff reports, and minutes [here](#).

MCSTOPPP

A project of Marin County and its 11 cities and towns, MCSTOPPP has developed a creek focused approach to stormwater pollution prevention. [Learn more.](#)

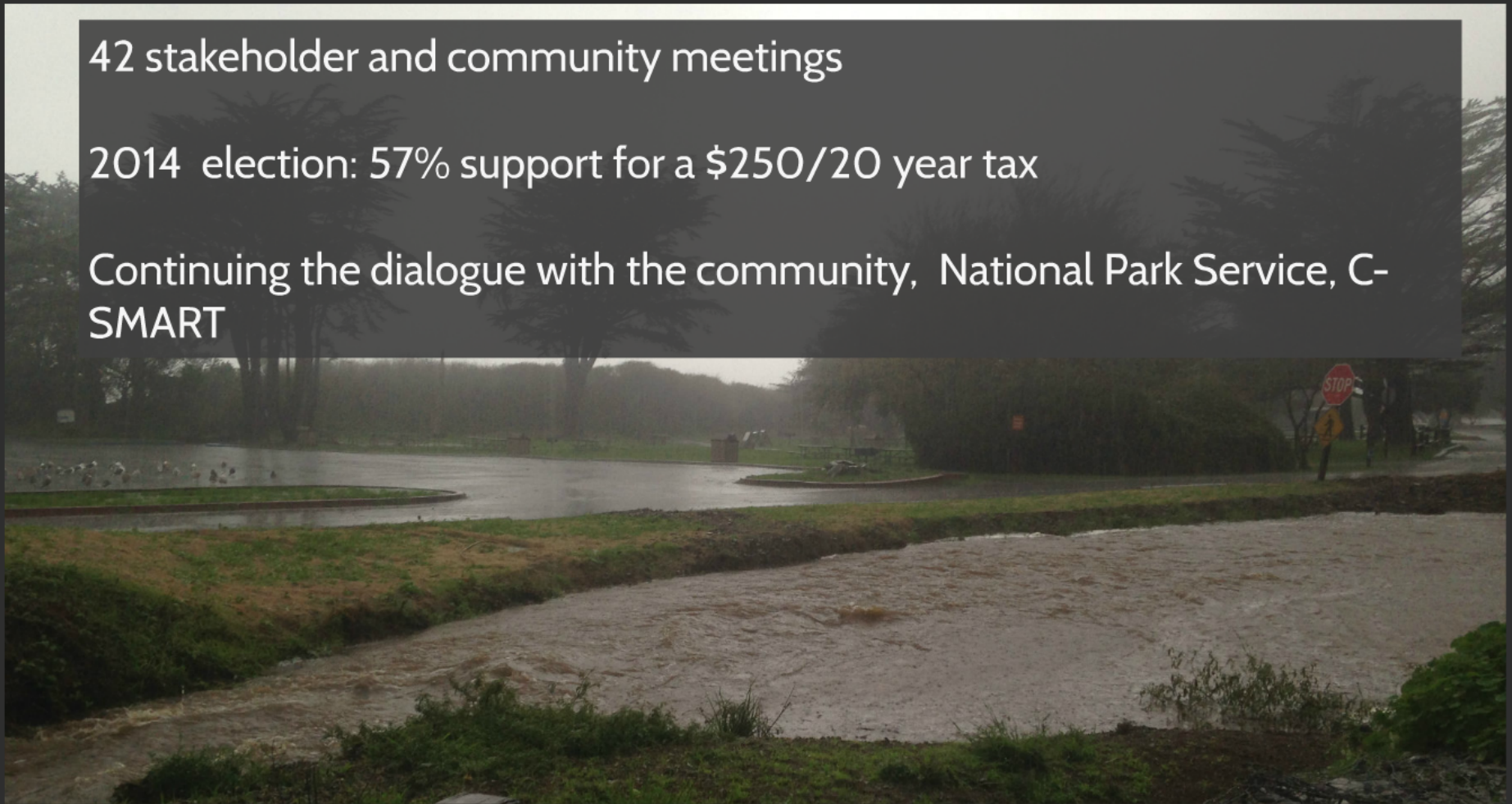


Working with natural processes: Stinson Beach

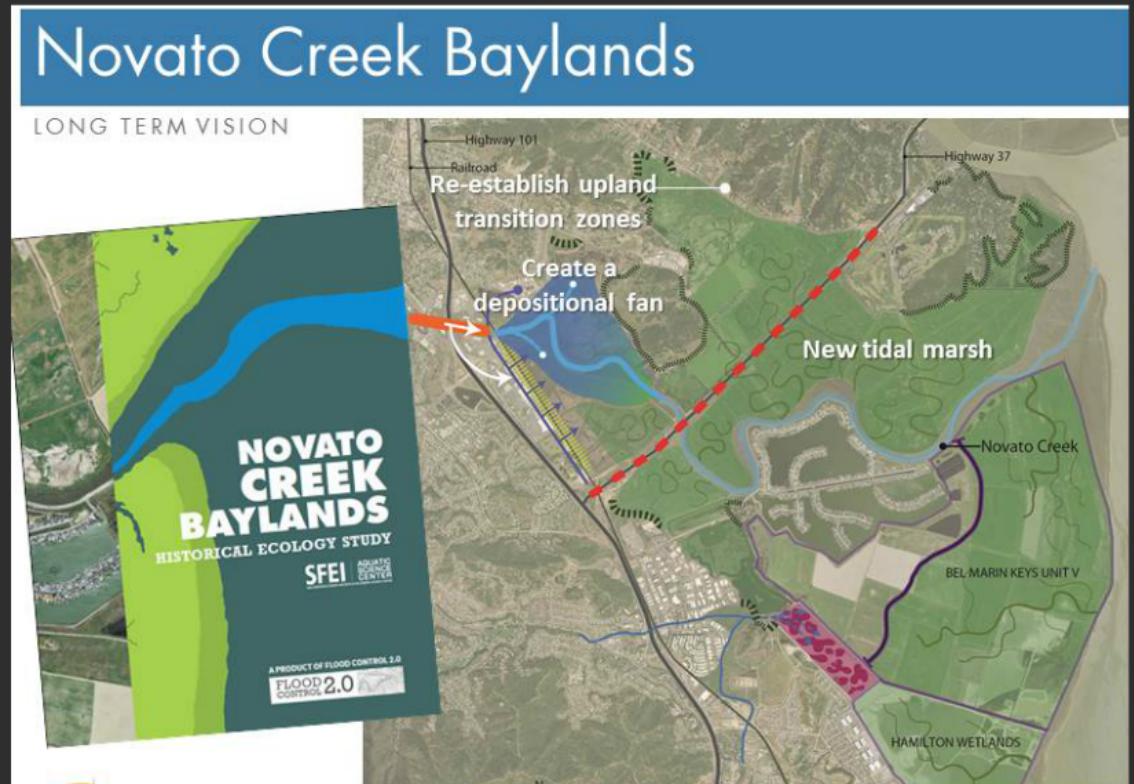
42 stakeholder and community meetings

2014 election: 57% support for a \$250/20 year tax

Continuing the dialogue with the community, National Park Service, C-SMART



Partnerships: Novato



Multi-benefit projects: sediment reuse

Novato



Gallinas



Photo by Craig Solin

Bothin Marsh



Photo by Sound Vision Media

Restore habitat

Boyle Park, Mill Valley



- 300' creek restored
- 60 cubic yards of trash and non-native vegetation removed
- 443 native plants
- 250 STRAW students, 10 teachers, and 76 parent volunteers



Gallinas Creek 2016

Fish passage restoration

10 projects
since 2005

\$3 million
investment

67% grant
funded,
33% County
match



Funding opportunities



Proposition 1: Water Bond

Dept. of Fish and Wildlife: watershed restoration

State Water Board: groundwater, stormwater, water reuse and recycling

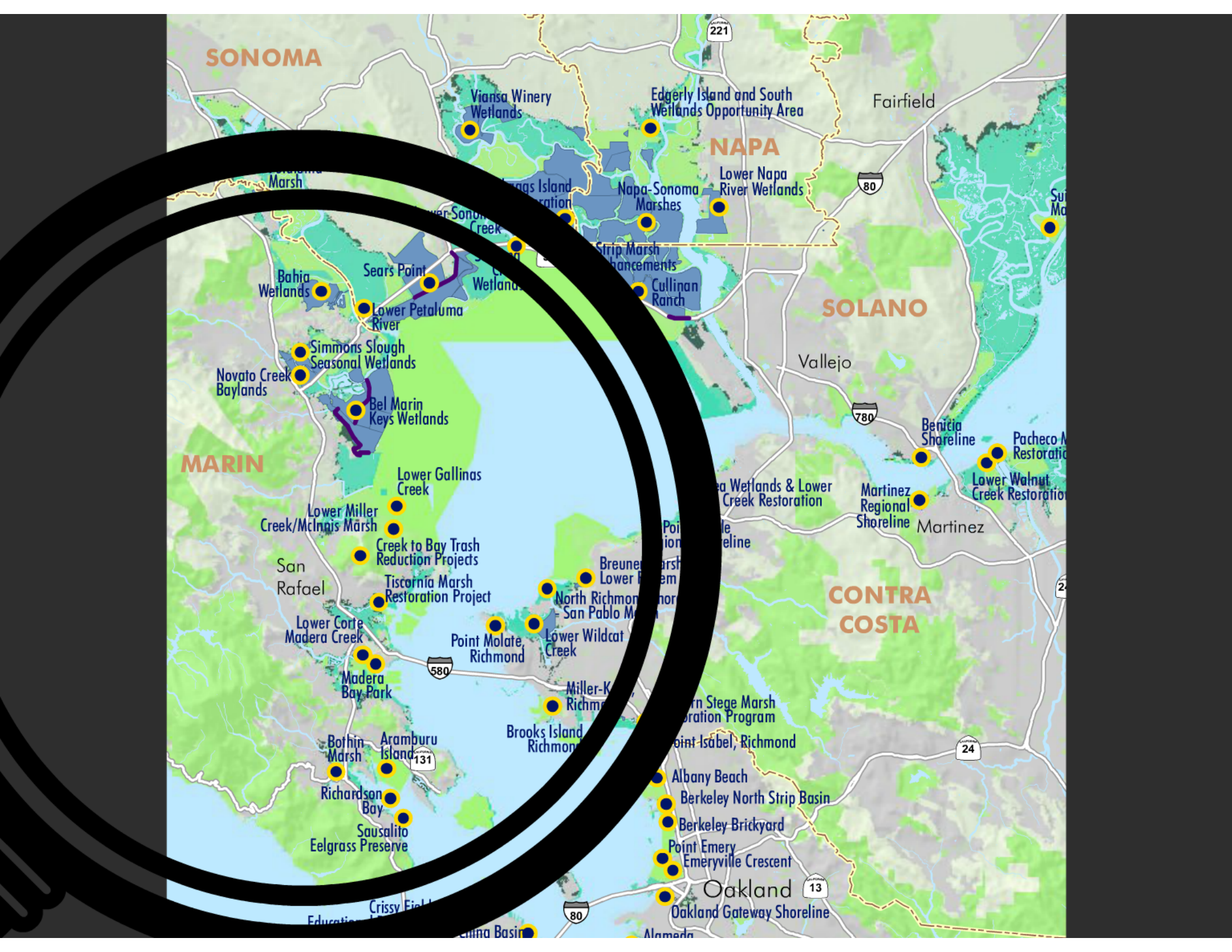
State Coastal Conservancy: ecosystem, watershed protection, and restoration

Dept. of Water Resources: integrated regional water management

Wildlife Conservation Board: stream flow enhancement

Measure AA





SONOMA

NAPA

SOLANO

MARIN

CONTRA COSTA

Viansa Winery Wetlands

Egderly Island and South Wetlands Opportunity Area

Fairfield

Marsh

Lower Sonoma Creek

Lower Napa River Wetlands

80

Suisun

Bahia Wetlands

Sears Point

Wetlands

Strip Marsh Enhancements

Cullinan Ranch

SOLANO

Vallejo

780

Benicia Shoreline

Pacheco Marsh Restoration

Lower Walnut Creek Restoration

Novato Creek Baylands

Simmons Slough Seasonal Wetlands

Bel Marin Keys Wetlands

Lower Gallinas Creek

Lower Miller Creek/McInnis Marsh

Creek to Bay Trash Reduction Projects

Tiscornia Marsh Restoration Project

San Rafael

Lower Corte Madera Creek

Madera Bay Park

580

Point Molate Richmond

Lower Wildcat Creek

Miller-Kelley Richmond

Brooks Island Richmond

Point Isabel

Shoreline

Martinez Regional Shoreline

Martinez

CONTRA COSTA

Bothin Marsh

Aramburu Island

Richardson Bay

Sausalito Eelgrass Preserve

131

Brooks Island Richmond

Point Isabel, Richmond

Albany Beach

Berkeley North Strip Basin

Berkeley Brickyard

Point Emery

Emeryville Crescent

Oakland

Oakland Gateway Shoreline

13

80

24

Crissy Field

Education

Alameda

Prepare for sea level rise

Bayshore Vulnerability Assessment release: summer 2016

Coordination with all 11 cities and towns, local agencies: fire, police, water, sanitation, transportation, utilities, property owners, environmental groups, and more



Manzanita-December 2014





Thank you!

Liz Lewis, planning manager
lizlewis@marincounty.org
marinwatersheds.org