




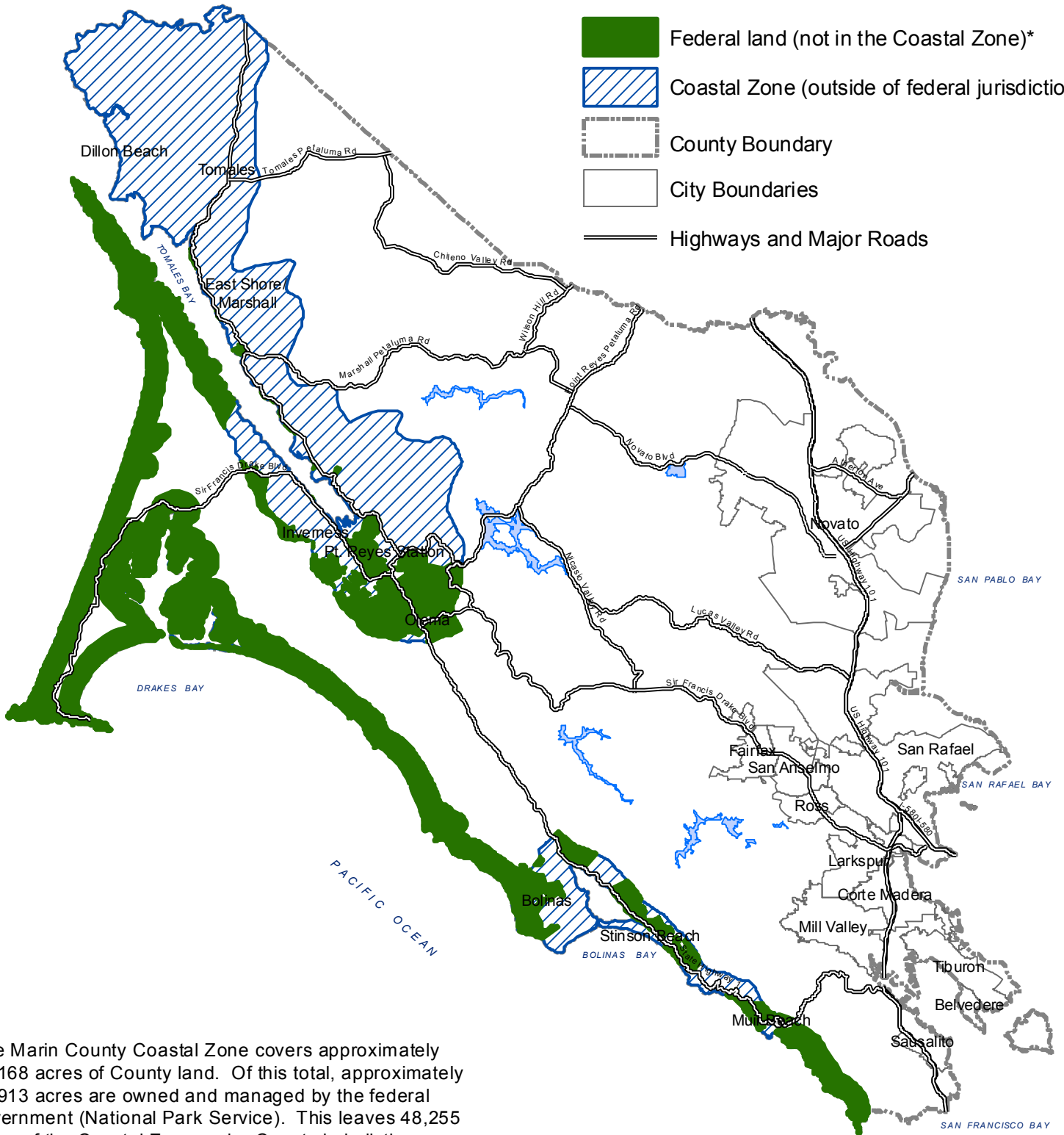


# MARIN COUNTY COASTAL ZONE

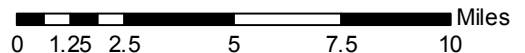
## Legend

-  Federal land (not in the Coastal Zone)\*
-  Coastal Zone (outside of federal jurisdiction)\*
-  County Boundary
-  City Boundaries
-  Highways and Major Roads



\* The Marin County Coastal Zone covers approximately 82,168 acres of County land. Of this total, approximately 33,913 acres are owned and managed by the federal government (National Park Service). This leaves 48,255 acres of the Coastal Zone under County jurisdiction.

NOTE: Pursuant to the Federal Coastal Zone Management Act of 1972 (16 U.S.C. 1451, et seq.), and consistent with California Coastal Act Section 30008, the "Coastal Zone" excludes "...lands the use of which is by law subject solely to the discretion of or which is held in trust by the Federal Government, its officers or agents."



THIS MAP WAS DEVELOPED FOR PLANNING PURPOSES. THE COUNTY OF MARIN IS NOT RESPONSIBLE OR LIABLE FOR USE OF THIS MAP BEYOND ITS INTENDED PURPOSE. THIS MAP IS REPRESENTATIONAL ONLY. DATA ARE NOT SURVEY ACCURATE.

Date: March 27, 2012 File: Map 2\_Marin County Coastal Zone\_revised 3.27.12.mxd

SOURCE: Marin County Community Development Agency

