

Safety Element

Unincorporated Marin County

Joint Board of Supervisors
and Planning Commission
Workshop

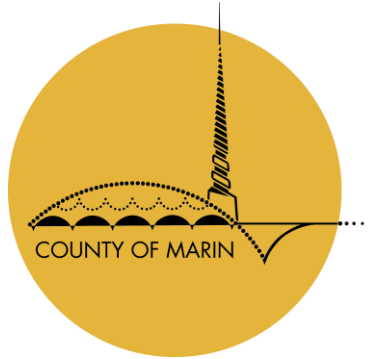
April 19, 2022



Welcome & Introductions



Presenters and Facilitators



County Staff

Jack Liebster, Planning Manager

Leslie Lacko, Senior Project Manager



Consultant Team

MIG: Scott Davidson, Principal

Barbara Beard, Safety Element Lead

WRM: Carol Rice, Senior Wildland Fire Manager



Agenda

- Provide an overview of the Safety Element update process
- Discuss new climate change and resiliency planning goals and policies
- Present key issues and policies for discussion
- Solicit input

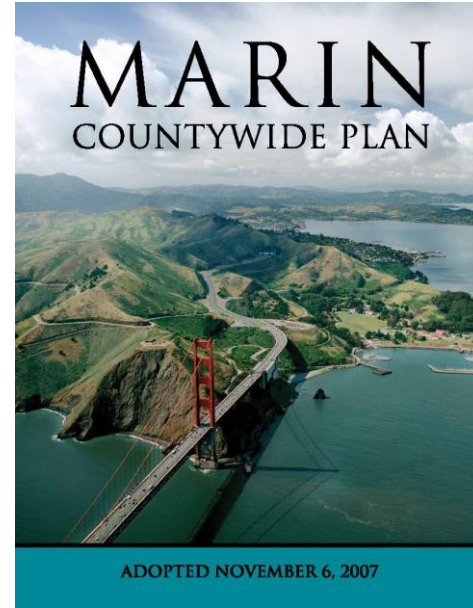


Safety Element Update



Existing Safety Element

- Incorporated in the Natural Systems and Agricultural Element
- Existing policies cover
 - Geologic Hazards
 - Flooding and Sea Level Rise
 - Wildfire



NATURAL SYSTEMS & AGRICULTURE ELEMENT



Photo: Vision One.

2.6 Environmental Hazards

Background

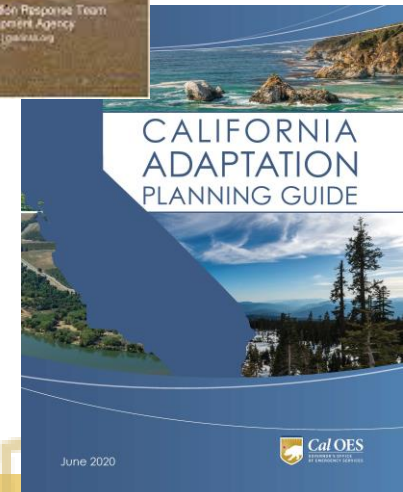
The policies and programs in this Section of the Countywide Plan are intended to minimize harm to people and property due to environmental hazards from seismic activity, geologic conditions, flooding, and fire. The County maintains an Emergency Operations Plan to guide agency and public natural disaster preparedness and response, as described under Goal PS-3 in the Public Safety Section of the Socioeconomic Element.

Updating the Safety Element

- Updated every 8 years (with the Housing Element)
- Focus on new requirements for Safety Elements
- Plan should emphasize equity & needs of vulnerable communities

Marin County
Multi-Jurisdiction Local Hazard Mitigation Plan
(MCM LHMP)

2018



Public Outreach



6 Focus Groups



3 Public Workshops



Consider It! Online discussion forum



February Joint BOS/PC Meeting

Sample Goals, Policies, and Programs

Goal

EHS-1 Hazard Awareness

Raise public awareness and response about potential environmental hazards.

Policy

EHS-1.1 Enhance Public Awareness

Advise the public regarding the availability of countywide and local area environmental hazard studies, sources of hazard information and public services.

Program

EHS-1.1b Distribute Maps

Prepare and make available to the public maps depicting evacuation routes and areas prone to environmental hazards.

Building on Existing Goals

Hazard Awareness

Geology and Seismicity

Flooding

Wildfire



New Policy Areas

Equity

Wildfire

Disaster Preparedness, Response & Recovery

Resiliency Planning

- Sea Level Rise
- Severe Weather, Extreme Heat and Drought



Equity



What Have We Heard?



Unhoused populations and visitors don't receive notifications



Lower income residents have financial difficulties preparing for hazards



Isolated populations, those with mobility constraints, and low-income face greater challenges evacuating



Planning should address language barriers and communication needs

Key Considerations

Vulnerability assessment outcomes

State guidance on planning with equity lens

Marin planning efforts for equity

Potential Programs

Create equitable processes for achieving climate resilience.

Vulnerable populations

Community specific engagement

Community-led safety programs



Wildfire



What Have We Heard?



Roads need to function in an evacuation



Better mapping of fire hazards



Unhealthy air quality during fire season



Need for more vegetation management

Key Considerations

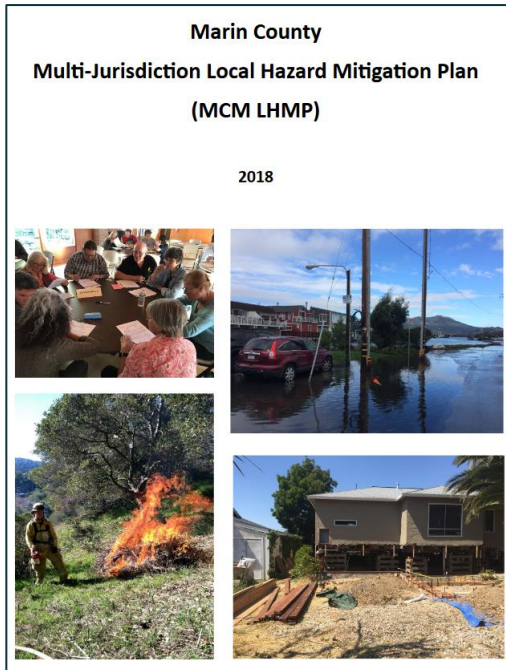
Existing Adopted Fire Policy

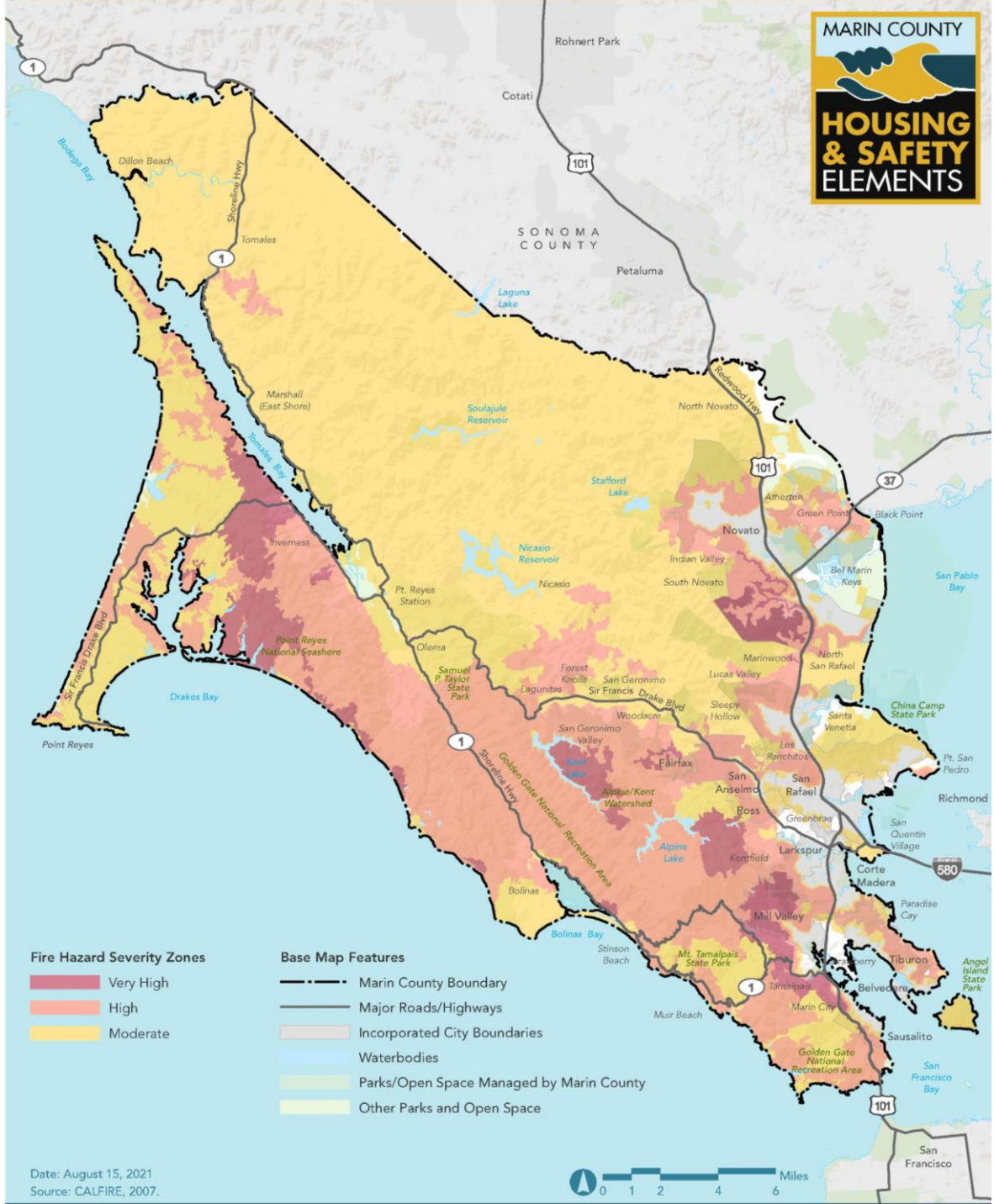
Building Code Requirements

Board of Forestry Fire Safe Regulations (draft)

Plan for Development in Fire Hazard Areas

Existing Plans and Policies





Date: August 15, 2021
 Source: CALFIRE, 2007.



Potential Programs

Protect people and property from hazards associated with wildland and structure fires

CAL FIRE -Limit development in VHFHSZ.

Improve existing emergency evacuation routes

Vegetation management & habitat protection

Require post-fire construction to meet current building standards



Disaster Preparedness, Response & Recovery



What Have We Heard?



Reaching all of Marin



Increase partnerships and coordination



Gaps in emergency communications



Financial assistance needed



Concerns of road adequacy

Key Considerations

Evacuation routes

Post disaster recovery plans & ordinances

Preparedness requires coordination

Potential Programs

Ensure readiness in and after emergency situations and create an effective evacuation route network.

Proactive
preparedness
&
recovery

Emergency
vehicle
access

Critical
services
capacity

Affordable
Housing
recovery



Resiliency Planning



What Falls Under Resiliency Planning?



Sea Level
Rise



Severe
Weather



Extreme
Heat



Drought



Potential Programs

Manage the threat of climate risks to the current and future Marin community.

Adaptation
integration
and
requirements

Resilience
Hubs

Strengthen
partnerships

Disclosure of
current and
future
hazards



Sea Level Rise



What Have We Heard?



Plan for sea level rise



Limit development in risk areas



Concern over groundwater intrusion & septic concerns



Concern over displacement of residents

Key Considerations

Changing state guidance

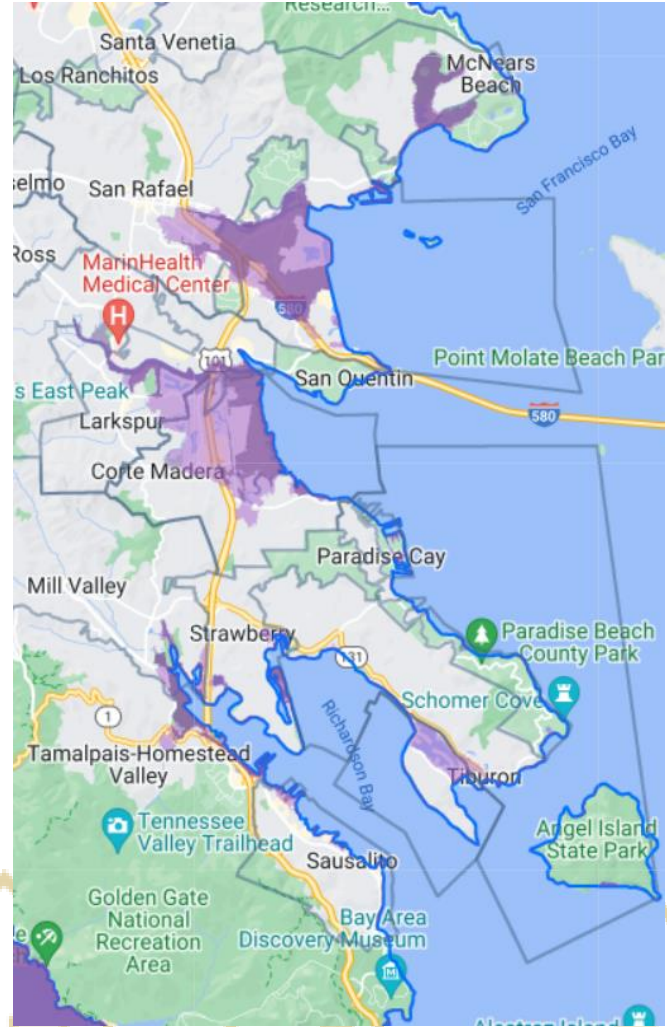
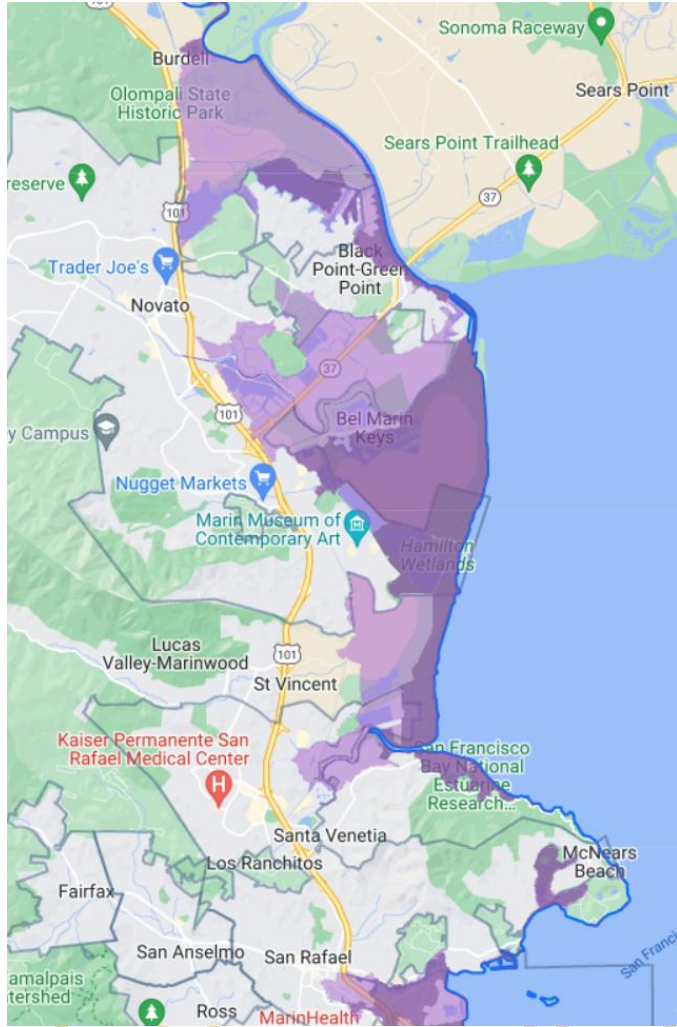
State agency permits & SLR projections

Efforts need to span across jurisdictions

Financing of mitigation projects

Sea Level Rise

- Near-term (2040-2050) - 50 cm (1.6 ft)
- Medium-term (2050-2070) - 100 cm (3.3 ft)



Potential Programs

Safeguard Marin from rising sea levels.

Consistent
projections for
planning

Construction
design & siting
requirements

Amend
Bayfront
Conservation
Combining
District

Investigate &
leverage
funding
mechanisms

Severe Weather, Extreme Heat & Drought



What Have We Heard?



Support community and neighborhood preparedness efforts



Protect utilities/infrastructure from severe weather



Provide assistance for home protection



Where will water come from to serve new development

Key Considerations

Effective ways to engage communities

Strategies to reduce service interruptions

Plan for frequency and intensity of events

Potential Programs

Adapt to increases in average temperatures, extreme heat days, and severe weather events.

Prepare for long-term water restrictions.

Cooling centers

Minimize communication interruptions

Coordination with water suppliers



Comments & Questions



Next Steps



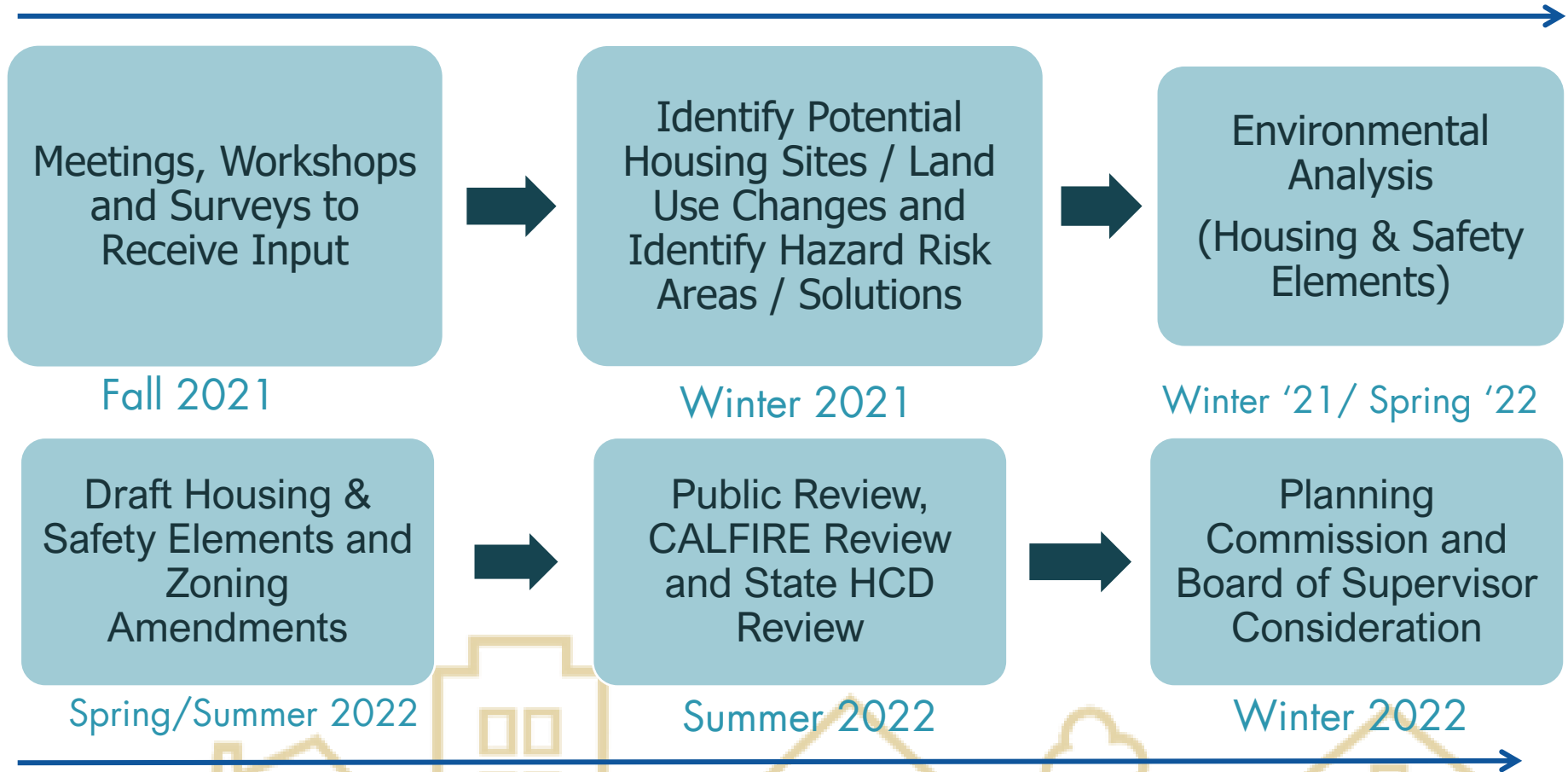
Next Steps

- Continue to analyze Safety Element policies and programs
- Proceed with analysis of Housing Element sites, policies, and programs
- Public release of Housing & Safety Elements and EIR in summer 2022



Timeline

Public Input



Public Input

Safety Element

Unincorporated Marin County

Joint Board of Supervisors
and Planning Commission
Workshop

April 19, 2022

