

# Draft Safety Element: Public Comment Meeting

Marin County Board of Supervisors &  
Planning Commission

June 14, 2022

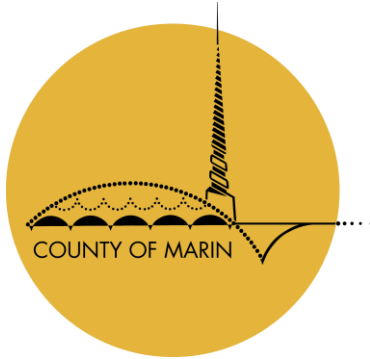


# Welcome & Introductions



# Presenters and Facilitators

---



## County Staff

Jack Liebster, Planning Manager

Leslie Lacko, Senior Project Manager



## Consultant Team

Laura Stetson, Principal

Barbara Beard, Safety Element Lead



# Agenda

---

- Present Overview of Draft Safety Element
  - ~Focus on programs
- Board and Commission Question / Comments
- Receive Public Comment

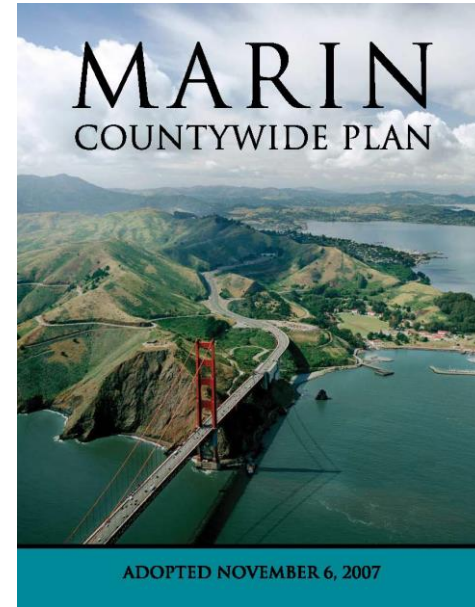


# Safety Element Update



# Existing Safety Element

- Incorporated in the Natural Systems and Agricultural Element
- Existing policies cover
  - Geologic Hazards
  - Flooding and Sea Level Rise
  - Wildfire



NATURAL SYSTEMS & AGRICULTURE ELEMENT



Photo: Vision One.

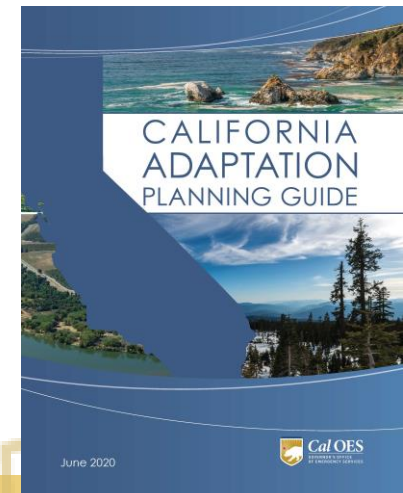
## 2.6 Environmental Hazards

### Background

The policies and programs in this Section of the Countywide Plan are intended to minimize harm to people and property due to environmental hazards from seismic activity, geologic conditions, flooding, and fire. The County maintains an Emergency Operations Plan to guide agency and public natural disaster preparedness and response, as described under Goal PS-3 in the Public Safety Section of the Socioeconomic Element.

# Updating the Safety Element

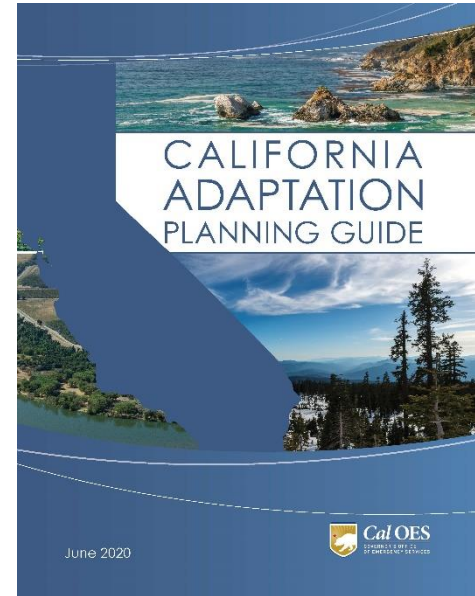
- Updated every 8 years (with the Housing Element)
- Focus on new requirements for Safety Elements
- Requires a Vulnerability Assessment
- Plan should emphasize equity & needs of vulnerable communities



# Vulnerability Assessment

---

- Follows California Adaptation Planning Guide
- Describes hazards exacerbated by climate change
- Identifies vulnerable populations and community assets
- Evaluates Adaptive Capacity





# Building on Existing Goals

---

Hazard Awareness

Geology and Seismicity

Flooding

Wildfire



# New Policy Areas

---

Equity

Wildfire

Disaster Preparedness, Response & Recovery

Resiliency Planning

- Sea Level Rise, Severe Weather, Extreme Heat and Drought



# What Have We Heard?

---



Vulnerable populations face more challenges



Evacuation and road adequacy



Partner and support community preparedness



Concern over displacement of residents



Adaptation plan for sea level rise

# Safety Element Reflects BOS/PC Direction

---



Focus SE on Equitable Community Safety Planning



Address Sea Level Rise in a Coordinated Manner



Address Evacuation and Wildfire Preparedness Measures



Emphasize Hazard Recovery Planning

# Goal, Policies, & Programs



# Sample Goals, Policies, and Programs

## Goal

### **EHS-1 Hazard Awareness**

Raise public awareness and response about potential environmental hazards.

## Policy

### **EHS-1.1 Enhance Public Awareness**

Advise the public regarding the availability of countywide and local area environmental hazard studies, sources of hazard information and public services.

## Program

### **EHS-1.1b Distribute Maps**

Prepare and make available to the public maps depicting evacuation routes and areas prone to environmental hazards.

# Equity



# Key Considerations

---

Vulnerability assessment outcomes

State guidance on planning with equity lens

Marin planning efforts for equity





# Potential Programs

---

Create equitable processes for achieving climate resilience.

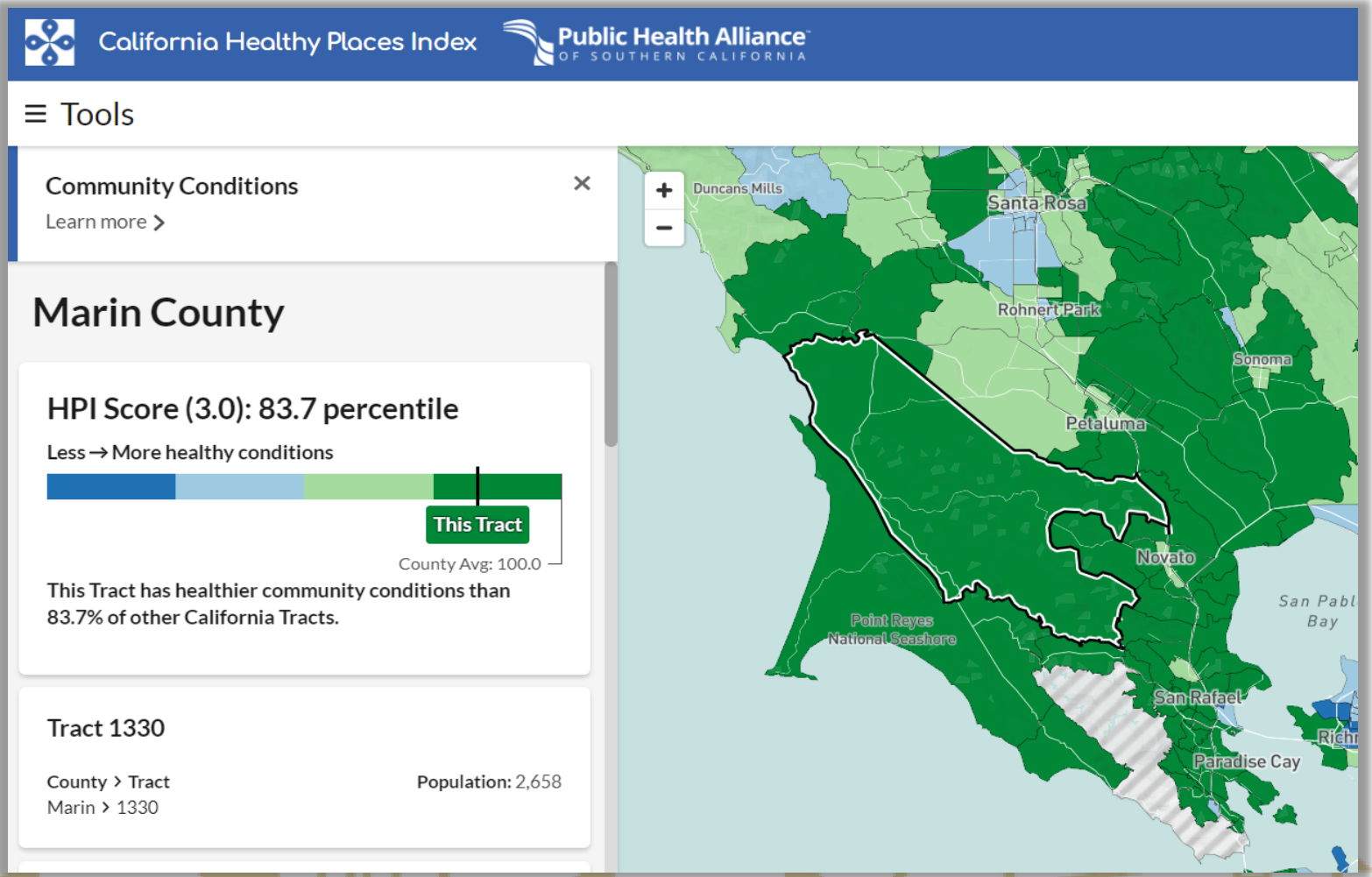
Identify and map vulnerable populations

Community specific engagement

Community-led safety programs



# Mapping



# Disaster Preparedness, Response & Recovery



# Key Considerations

---

Evacuation routes

Post disaster recovery plans & ordinances

Preparedness requires coordination

# Potential Programs

Ensure readiness in and after emergency situations and create an effective evacuation route network.

**Preparedness:**  
outreach and engagement;  
and supporting community-led disaster preparedness

**Response:**  
focus on improving evacuation routes

**Recovery:**  
update Emergency Recovery Plan and plan for post-disaster affordable housing

**COORDINATION**



# Wildfire



# Key Considerations

---

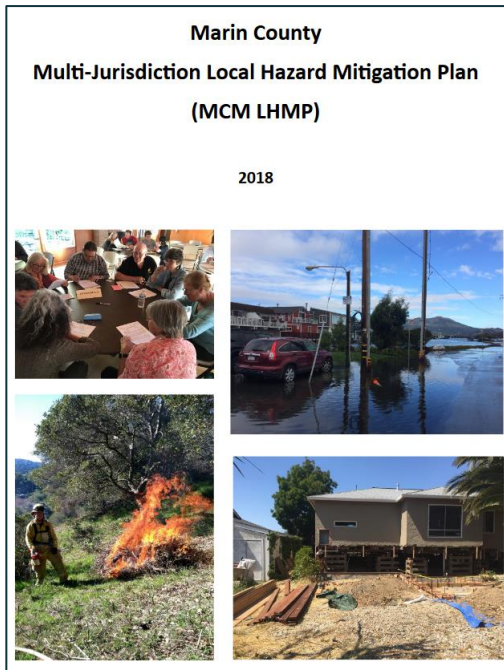
Existing Adopted Fire Policy

Building Code Requirements

Board of Forestry Fire Safe Regulations (draft)

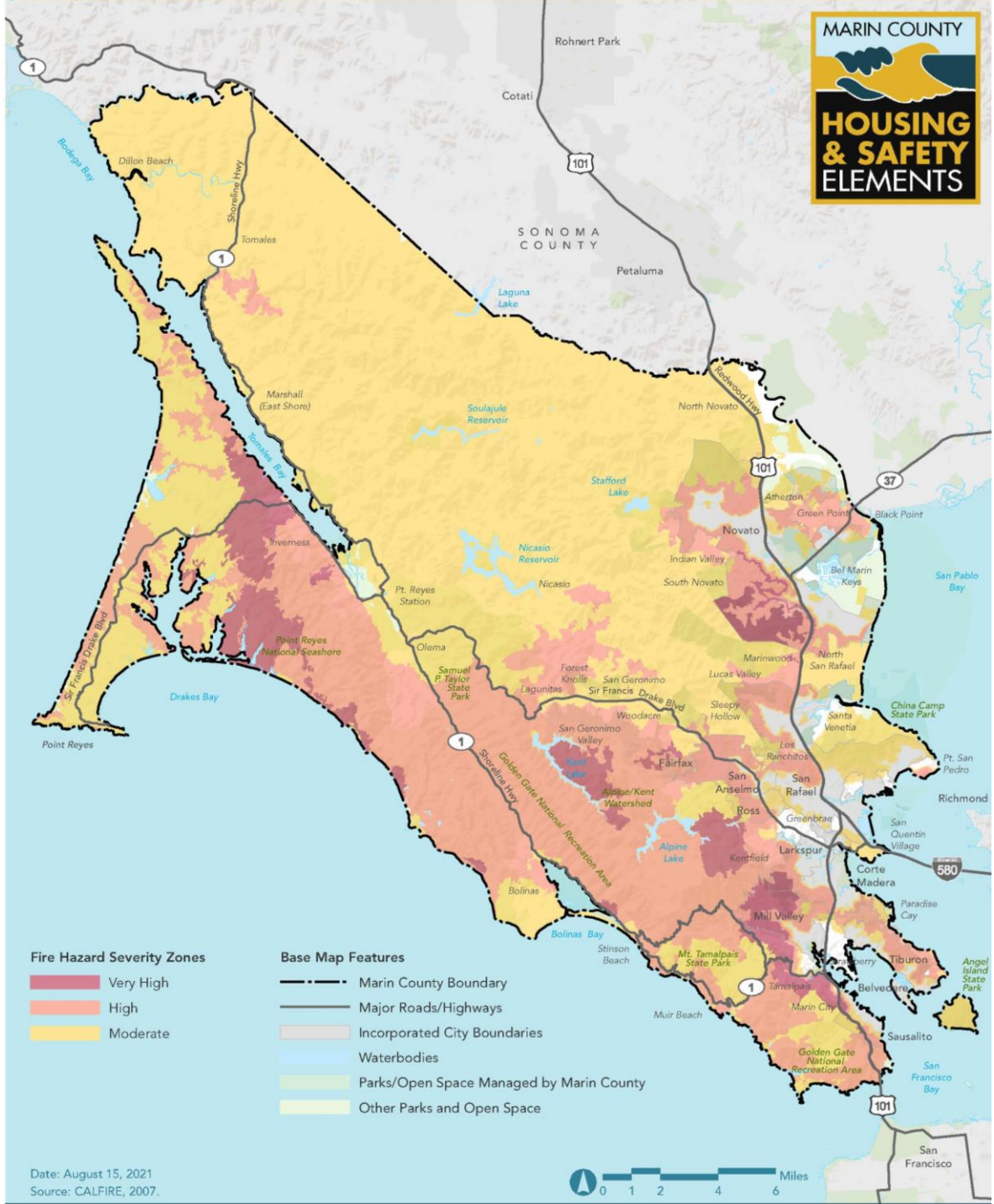
Development in Fire Hazard Areas

# Existing Plans and Policies





MARIN COUNTY  
  
**HOUSING & SAFETY ELEMENTS**



Date: August 15, 2021  
 Source: CALFIRE, 2007.



# Potential Programs

---

Protect people and property from hazards associated with wildland and structure fires

Regulate development in VHFHSZ

Improve existing emergency evacuation routes

Vegetation management & habitat protection

Require post-fire construction to meet current building standards



# Emergency Evacuation

---

## MWPA

### Evacuation Risk Planning

In progress...  
Map and rate roads for level of risk.



# Vegetation Management & Habitat Protection

## MWPA

Ecologically  
Sound  
Practices

(for habitat  
protection &  
sustainable  
vegetation  
management)



# Resiliency Planning



# What Falls Under Resiliency Planning?



Sea Level  
Rise



Severe  
Weather



Extreme  
Heat



Drought



# Potential Programs

---

Manage the threat of climate risks to the current and future Marin community.

Adaptation  
integration and  
requirements

County  
leadership on  
multijurisdictional  
adaptation

Resilience Hubs

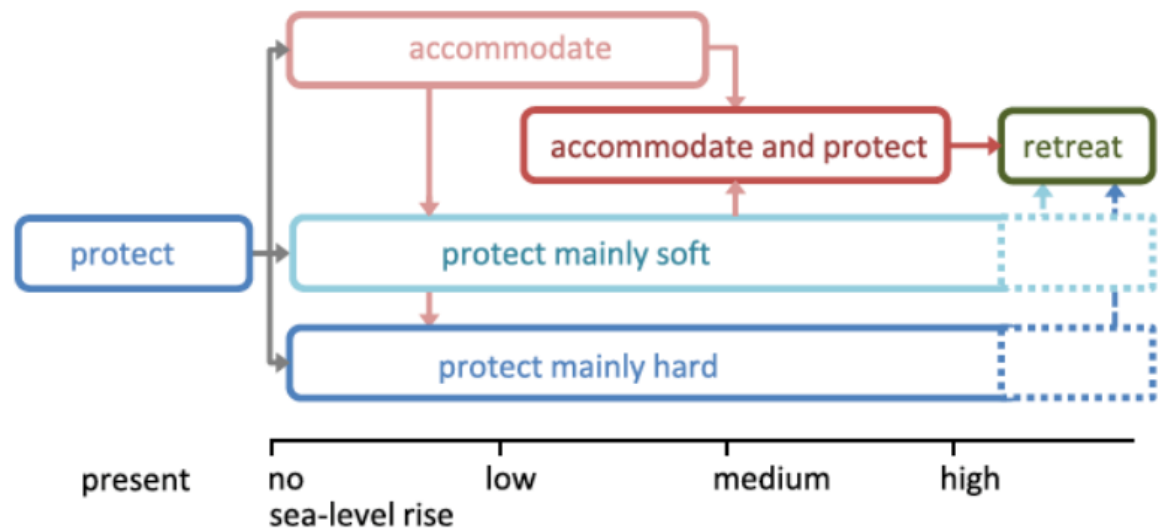
Disclosure of  
current and future  
hazards



# Adaptation Planning Outcomes

County Leadership on a Multi-jurisdictional Approach to SLR

Adaptation Planning Requirements





# Resilience Hubs

---



**EXISTING COMMUNITY CENTRE**

# Resilience Hubs



# Resilience Hubs

Off Grid Solar Power



**RESILIENCE HUB**

**MERCYCORPS.ORG.UK**



# Resilience Hubs



# Resilience Hubs



# Resilience Hubs



# Resilience Hubs

Risk Reduction & Disaster Training



**RESILIENCE HUB**

**MERCYCORPS.ORG.UK**



# Resilience Hubs

**Risk Reduction & Disaster Training**

**Off Grid Solar Power**

**Communication Hub**

**Clean Water**



**Community Gardens**



**RESILIENCE HUB**

**MERCYCORPS.ORG.UK**





# Resilience Hubs

**Risk Reduction & Disaster Training**

**Off Grid Solar Power**

**Communication Hub**

**Clean Water**



**Community Gardens**



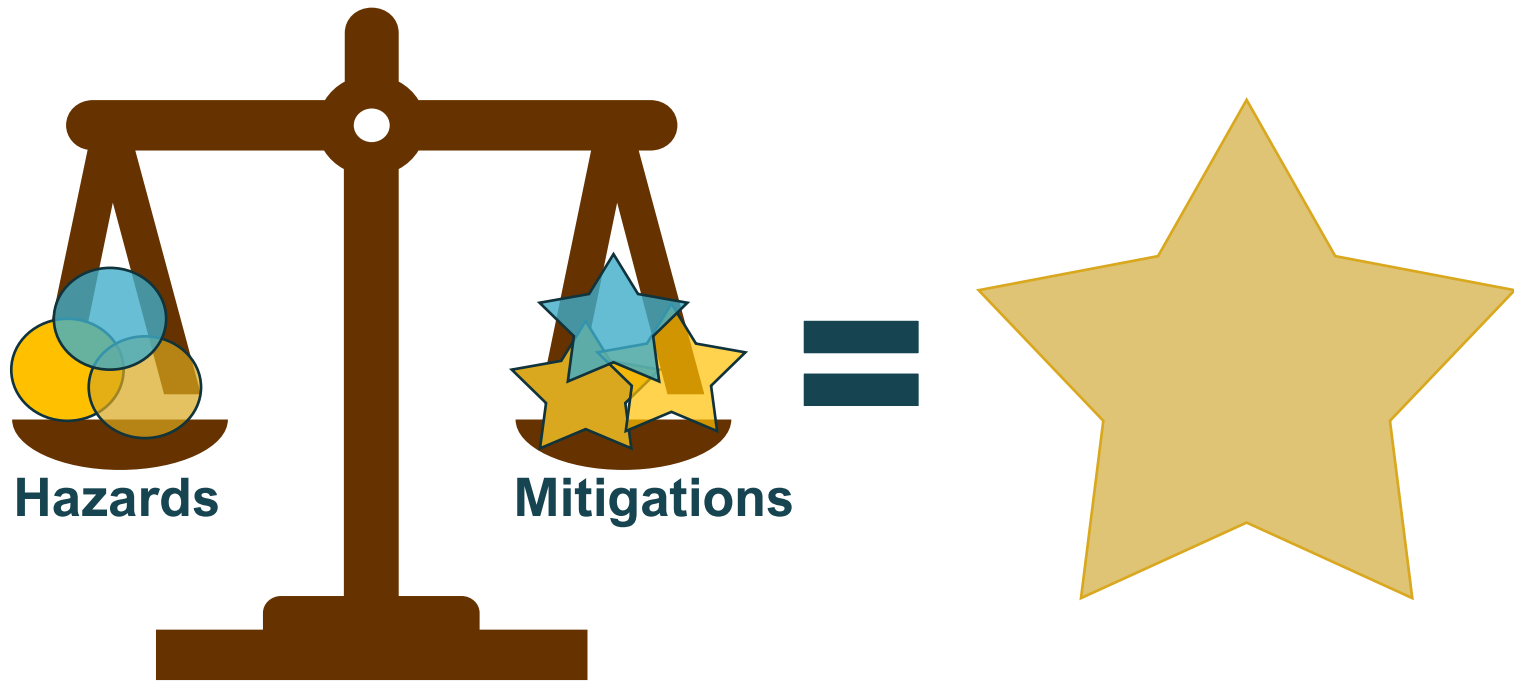
**RESILIENCE HUB**

**MERCYCORPS.ORG.UK**



# Property Rating System

---



# Next Steps



# Next Steps

---

- Draft SE Public Comment Till July 4, 2022
- Draft EIR Public Release Mid-July, 2022
- BOS/PC Mtg: DEIR Public Comment Aug 23, 2022
- PC & BOS Public Hearing/Adoption End of Year, 2022

# Questions and Comments

