

2023 Safety Element and Countywide Plan Amendment

Board of Supervisors

January 24, 2023



Marin County Community Development Agency | www.MarinCounty.org/HousingSafetyElements

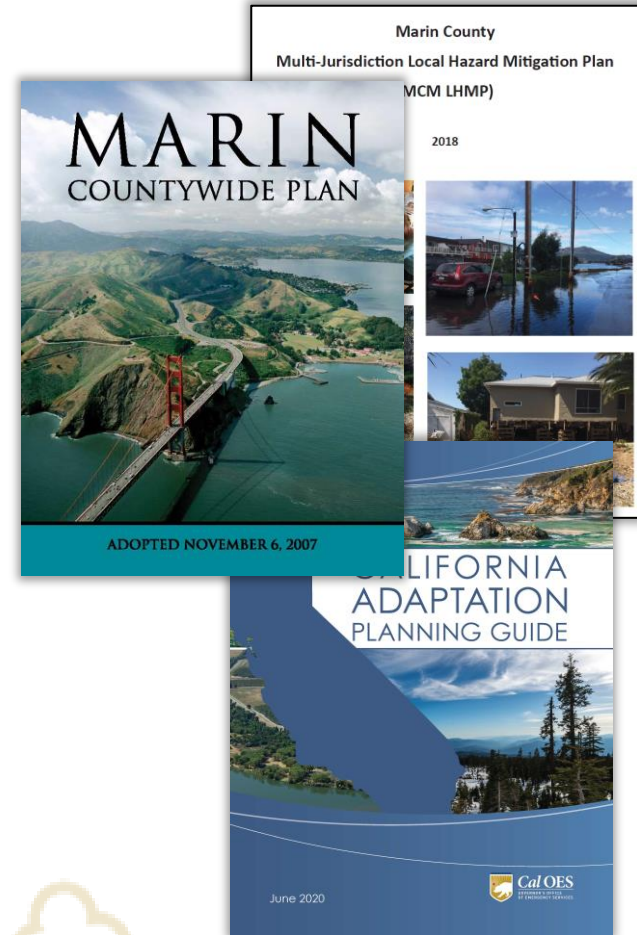
What is the Safety Element?

- A required element of the Countywide Plan
- Includes policies and programs to reduce risks from environmental hazards like wildfire, flooding, landslides, sea level rise, drought, and extreme heat.



Updating the Safety Element

- First update in a new 8-year cycle (with the Housing Element)
- New laws require focus on climate change adaptation and resilience
- Requires a Vulnerability Assessment
- Plan should emphasize equity & needs of vulnerable communities



RELATIONSHIP TO OTHER PLANS



Relationship to Housing Element

Apply Safety Element Policies to **Safely Develop Housing**



SE Policies will Improve Hazard Safety so Housing can be Developed Safely



SE Policies Specify Development Requirements so New Housing will be Constructed Safely



SE Policies Plan for all Equitable Protection from Climate Change Hazards

Relationship to Local Hazard Mitigation Plan

Local Hazard Mitigation Plan

A FEMA-required plan that includes assessing local risks to environmental hazards.

Identification of projects that reduce the identified risks. Projects qualify for FEMA funds.

Safety Element

A required part of the general plan that includes assessing local risks to environmental hazards.

Identification of goals, policies and implementation programs that reduce the identified risks.



LHMP and SE Differences

Local Hazard Mitigation Plan

5-year update cycle

Mitigation narrowly defined

Climate change impacts **optional**

Responsibility: Marin County Fire Office of Emergency Management

Multijurisdictional

Administered by the State Office of Emergency Planning (CalOES)

Safety Element

8-year update cycle

Policies can be broad

Climate change impacts **required**

Responsibility: Community Development Agency, Planning

Unincorporated Marin County

Administered by Governor's Office of Planning and Research (OPR) & Board of Forestry (CalFIRE)



MAJOR CHANGES TO THE SAFETY ELEMENT



Building on Existing Goals

Hazard Awareness



Disaster M, P, R & R

Geologic Hazards



Geologic Hazards

Flooding



Flooding

Wildfire



Wildfire (More Robust)



Equity



Climate Resiliency

Sea level rise, Extreme heat,
Severe weather, Drought

Building on Existing Goals

Hazard Awareness



Disaster M, P, R & R

Geologic Hazards



Geologic Hazards

Flooding



Flooding

Wildfire



Wildfire (More Robust)



Equity



Climate Resiliency

Sea level rise, Extreme heat,
Severe weather, Drought

What Falls Under Resiliency Planning?



Sea Level
Rise



Severe
Weather



Extreme
Heat



Drought

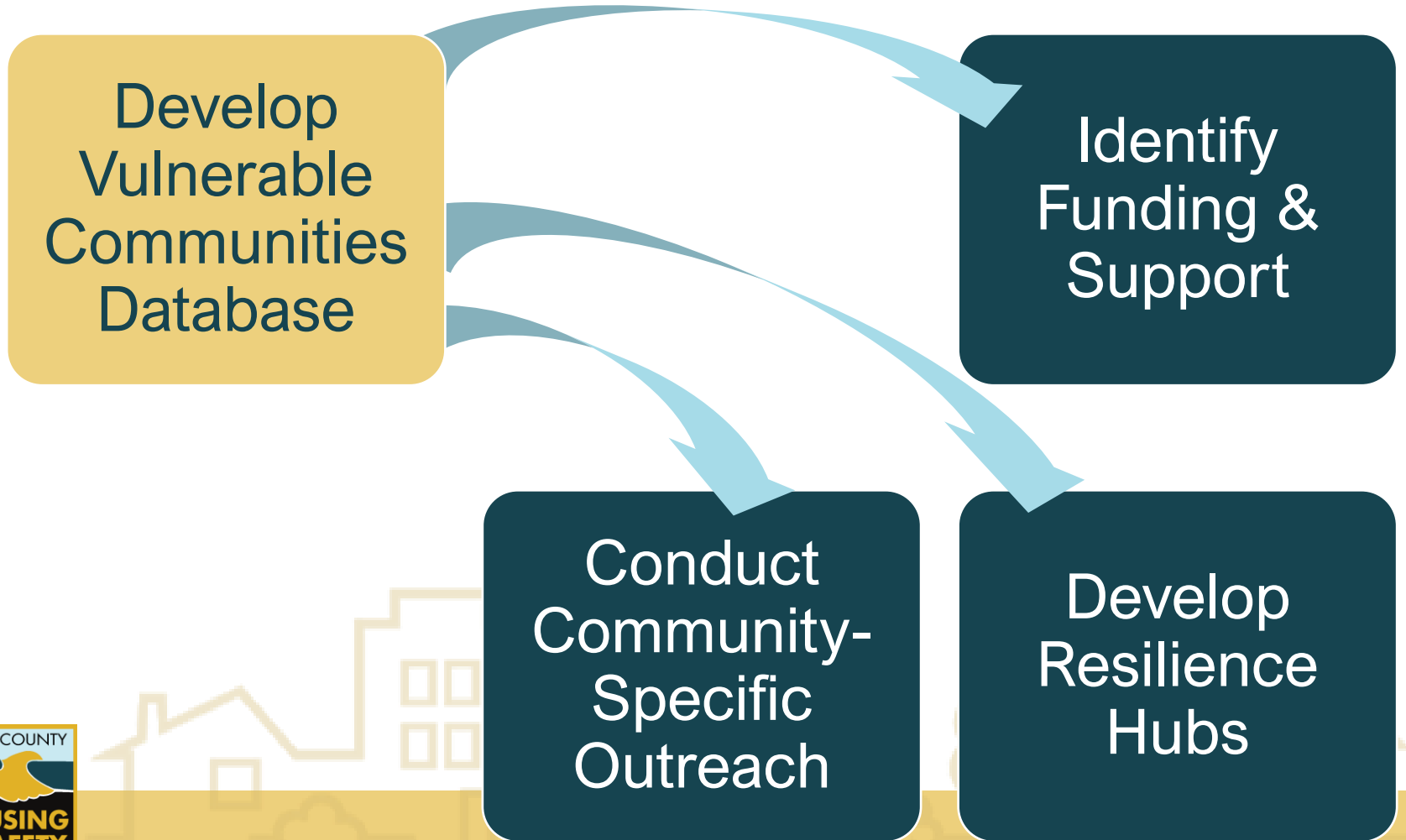


HIGH-PRIORITY SHORT-TERM PROGRAM IMPLEMENTATION



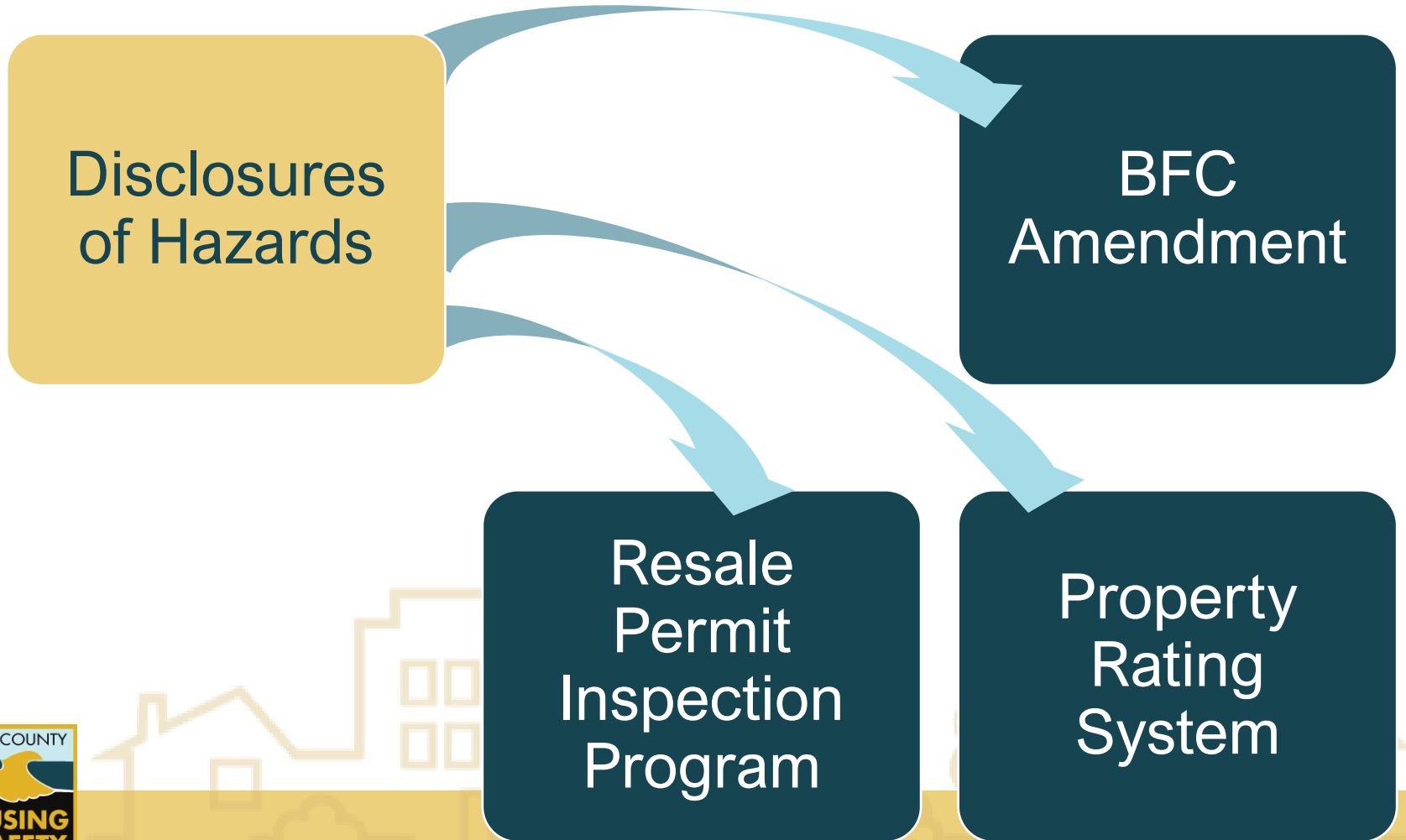
High-Priority Short-Term Implementation

EQUITY



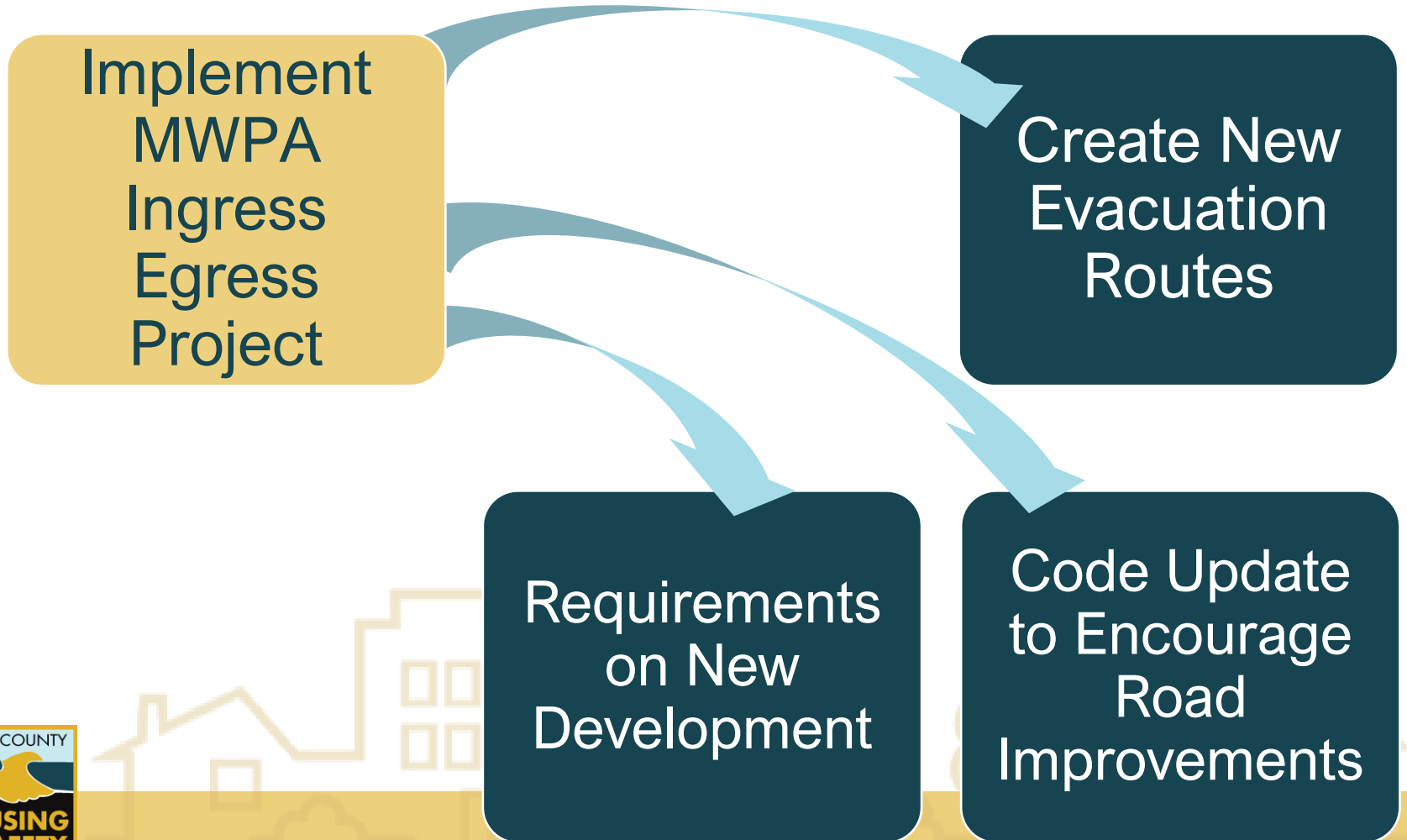
High-Priority Short-Term Implementation

HAZARD DISCLOSURE



High-Priority Short-Term Implementation

EVACUATION



Safety Element Public Outreach

4 Focus Group Meetings

August – September 2021

6 Design Review Board Meetings

Fall 2021 & Fall 2022

4 Public Workshops
September 2021 – April 2022

4 Joint BOS & PC Workshops
February – October 2022

4 Community Workshops
November 2022

2 PC Meetings
December 2021 – January 2023



QUESTIONS



Relationship to Local Hazard Mitigation Plan

