

Strawberry Design Review Board (SDRB)

AGENDA

Monday, February 28, 2022, 7:35 p.m.

Special Meeting

SDRB Chair Joe Sherer invites you to a scheduled Zoom meeting.

Here's the link to join the meeting:

<https://us02web.zoom.us/j/86948256875?pwd=amNuVDczNkU5WWVZeHlSSGp5MmU5UT09>

The public is invited to speak on any item on the agenda or at Open Time.

7:35 p.m. Welcome, Open to Speak on Non-agenda Items, and Review of Past Meeting Minutes from 2-6-2022.

Agenda Item:

7:40 p.m. Discussion and Review of Weissensee Properties Use Permit Request

Weissensee Properties Use Permit

36 Tiburon Boulevard, Mill Valley

Applicant: Osher Marin Jewish Community Center

200 N. San Pedro Road

San Rafael, CA 94903

Contact: Judy Wolff-Bolton

Assessor's Parcel: 043-011-22

Project ID: P3443

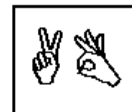
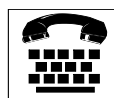
Planner: Joshua Bertain

PROJECT SUMMARY

PROJECT SUMMARY

The applicant requests Use Permit approval to allow for a child daycare center to operate within an existing, 6,227 square foot building located in unincorporated Mill Valley. The child daycare center would operate out of the existing building and include all uses incidental to a child daycare facility including, offices, four classrooms, bathrooms, a kitchen, and a fenced playground area. The facility would offer year-round enrollment options, provide capacity for up to 56 students, and accommodate up to 15 staff members.

The hours of operation would range from 7:30 AM until 3:30 PM. Staff hours would coincide with the hours of operation; however, student arrivals and departures would be staggered in 15-minute



In accordance with the Americans with Disabilities Act, if you need special assistance (i.e. auxiliary aids or services) to participate in this public meeting, please contact the Clerk of the Board of Supervisors by calling (415) 499-6172 (TTY) or (415) 499-7331 (voice) **at least five (5) business days prior to the meeting.**

intervals with the first of four classrooms arriving by 8:30 AM and the last of the four classrooms departing by 2:00 PM. After School care would be offered to students from 2:00 PM until 3:00 PM, and all students, staff, and teachers would be off the premises by 3:30 PM.

Use Permit approval is required pursuant to Table 2-7 in Section 22.12.030 of the Marin County Development Code.

Zoning: AP, Admin and Professional

Countywide Plan Designation: OC, Office Commercial/Mixed Use

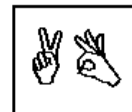
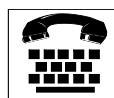
Community Plan (if applicable): Strawberry 2

For more information on this application, please visit the Planning Division's website at:

<http://www.marincounty.org/depts/cd/divisions/planning/projects>. Project plans and other documents related to the application are available on the project's webpage, where you can subscribe to receive email notifications and updates.

Communications and Future Agenda Items

The Strawberry Design Review Board (SDRB) usually meets on the 1st and 3rd Mondays of every month, at 7:35 PM, to review and make recommendations to the County on projects in unincorporated Strawberry Village. Recommendations are advisory only.



In accordance with the Americans with Disabilities Act, if you need special assistance (i.e. auxiliary aids or services) to participate in this public meeting, please contact the Clerk of the Board of Supervisors by calling (415) 499-6172 (TTY) or (415) 499-7331 (voice) **at least five (5) business days** prior to the meeting.