

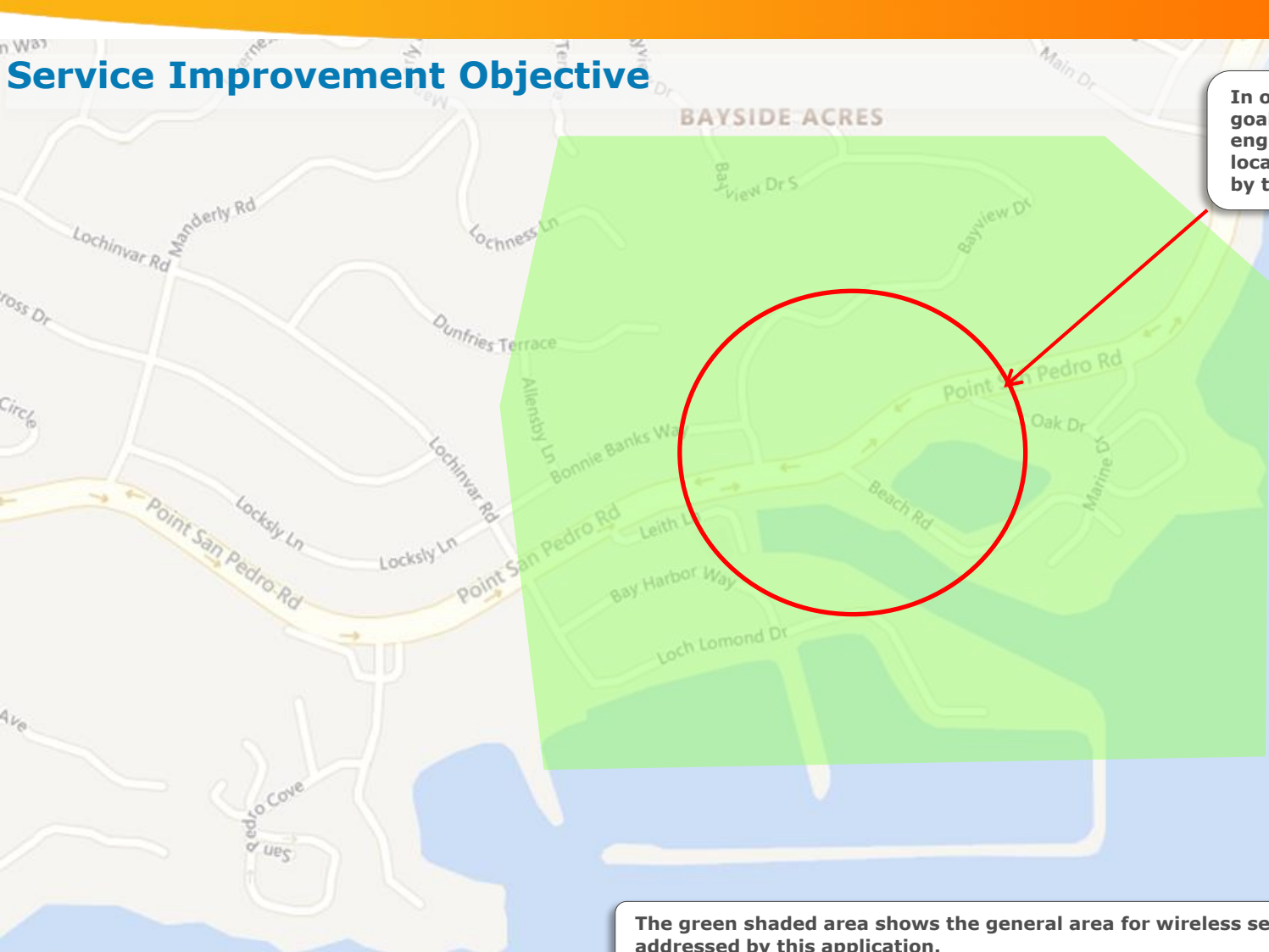
CCL04747 Service Maps

December 30, 2019



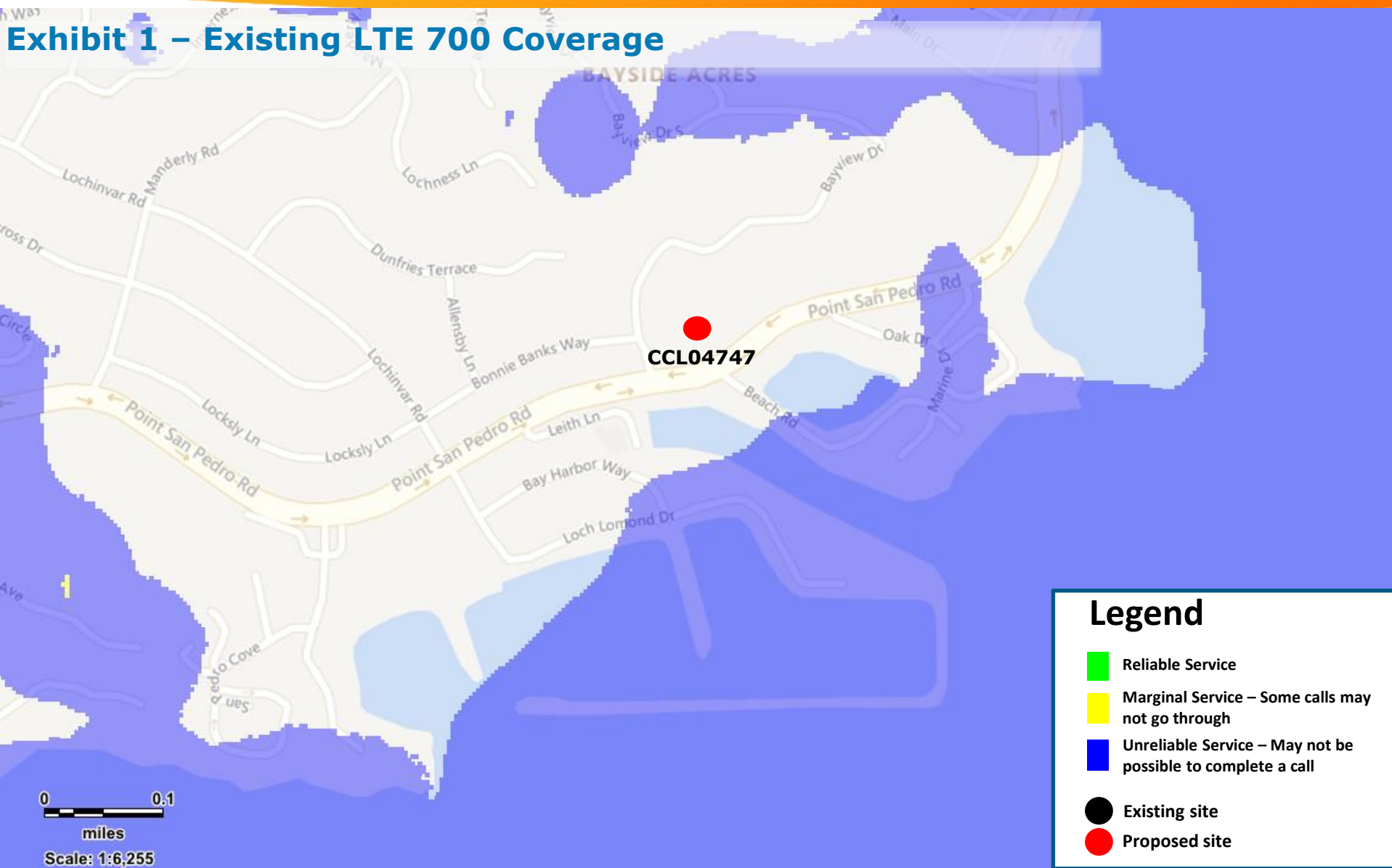
Service Improvement Objective

In order to achieve the service goals as defined, at&t network engineers considered site locations in the area defined by the red circle



The green shaded area shows the general area for wireless service improvements addressed by this application.

Exhibit 1 – Existing LTE 700 Coverage

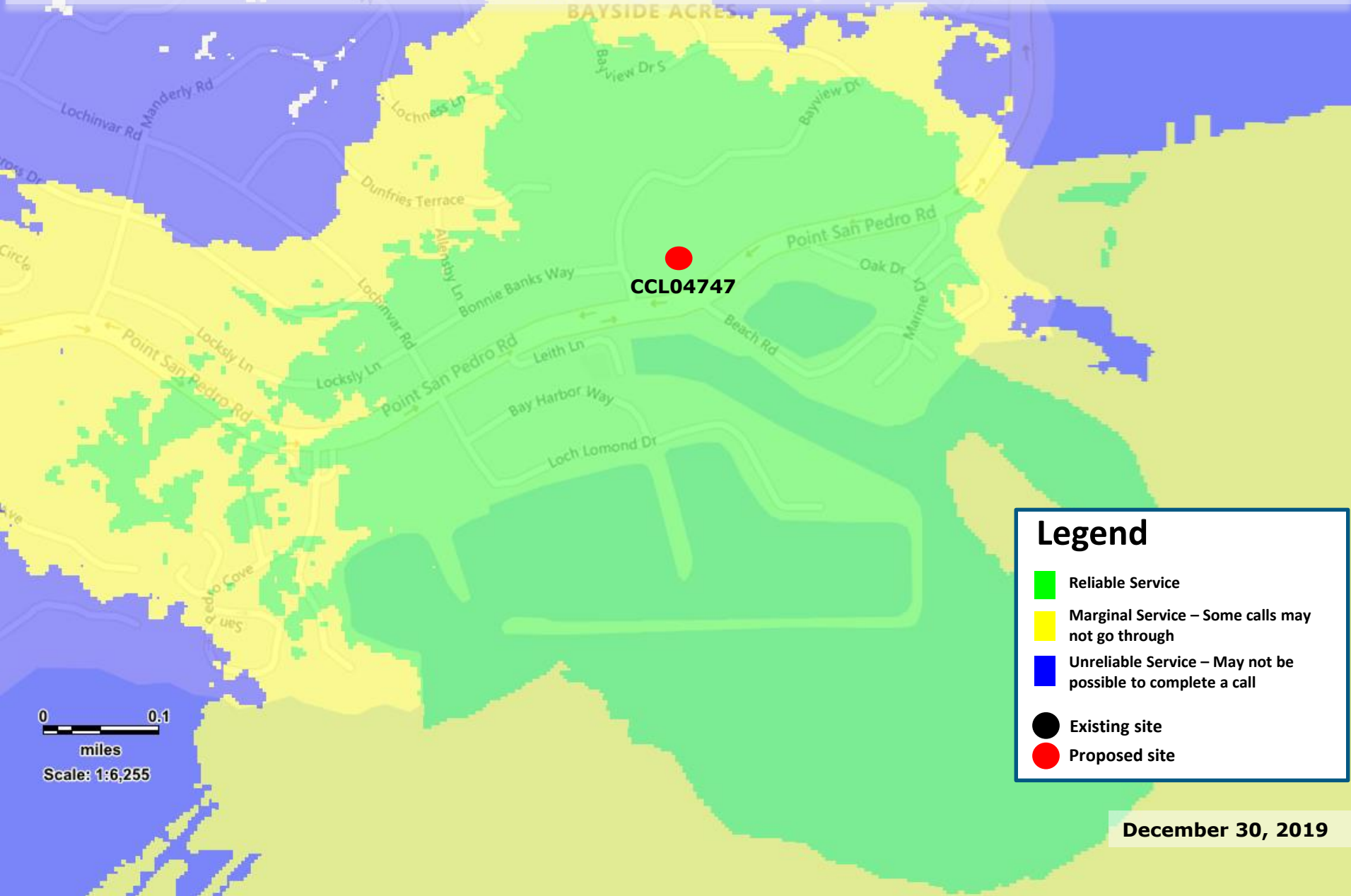


Legend

- Reliable Service
- Marginal Service – Some calls may not go through
- Unreliable Service – May not be possible to complete a call
- Existing site
- Proposed site

December 30, 2019

Exhibit 2 – Proposed LTE 700 Coverage – 10 Bayview Dr. @ RC = 30 ft.



Existing Surrounding Sites



Legend

- Existing site
- Proposed site

December 30, 2019