

# Kentfield Planning Advisory Board (KPAB)

P.O. Box 304, Kentfield, California 94914  
[bitsa@boulevardmarin.com](mailto:bitsa@boulevardmarin.com)

## AGENDA FOR PUBLIC MEETING ON

**Wednesday, July 13, 2022**

KPAB Chair Pro Tem, Anne Petersen, invites you to a scheduled Zoom meeting.

Join Zoom Meeting:

[https://us06web.zoom.us/webinar/register/WN\\_WtBynQ-3TKOMZKWQy3O9Pw](https://us06web.zoom.us/webinar/register/WN_WtBynQ-3TKOMZKWQy3O9Pw)

Meeting ID: 878 1318 6396

*The public is invited to speak on any item on the agenda or at Open Time.*

**7:00 p.m. Public Open Time and Review of the April 28, 2022 Meeting Minutes.**

**7:05 p.m. College of Marin Facilities Master Plan Update**

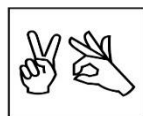
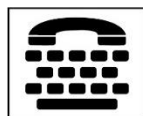
### PROJECT SUMMARY

College of Marin would like to present their updates for their Facilities Master Plan. The proposed plan would occur at three distinct sites in Marin County that are operated by the Marin Community College District. These include the Kentfield Campus in the unincorporated community of Kentfield, California, the Indian Valley Campus in the city of Novato, California, and the Bolinas Site in the unincorporated community of Bolinas, California. The program would involve a combination of repairs and retrofits to existing academic facilities, demolition of certain existing facilities, and construction of new facilities at the two campuses and the Bolinas site. Projects under the FMP are described by campus and grouped according to scope.

**8:00 p.m. Communications and Future Agenda Items**

**8:10 p.m. Adjournment**

*The Kentfield Planning Advisory Board meets on the 2<sup>nd</sup> and 4<sup>th</sup> Wednesdays, at 7 p.m., to review and make recommendations to the County on projects in unincorporated Kentfield, excluding Kent Woodlands. Recommendations are advisory only.*



All public meetings and events sponsored or conducted by the County of Marin are held inaccessible sites. Requests for accommodations may be made by calling (415) 473-4381 (Voice) 473-3232 (TDD/TTY) or by e-mail at [disabilityaccess@marincounty.org](mailto:disabilityaccess@marincounty.org) at least five workdays in advance of the event. Copies of documents are available in alternative formats, upon request.

