

# Kentfield Planning Advisory Board

P.O. Box 304, Kentfield, California 94914

## Agenda: Wednesday, July 26, 2017, 7:00 P.M.

Deedy Lounge, Student Center, College of Marin  
& 10891 Sunshine Coast Hwy, Powell River, BC, Canada

*The public is invited to speak on any item on the agenda or at open time.*

**7:00** Public Open Time and Review of June 28, 2017 Minutes

### **7:05. CSA(County Service Area) 17 Update and Discussion**

James Chayka, an operations superintendent with Marin County Parks who has responsibility for the 16 county service districts, will be at the meeting to discuss with the board how to collaborate on CSA 17 matters. He will bring copies of the FY 2017-18 CSA budget.

### **7:30. Adamson Design Review, 28 Wolfe Canyon Road (Garcia)**

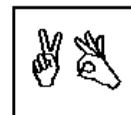
The application seeks design review approval for construction of a new, 4,241 s.f. single family residents, along with a 694 s.f. garage, resulting in a building area of 4,935 s.f. and a floor area of 4,395 s.f. The development would result in a floor area ratio 9(FAR) of 30 percent on the 14,654 s.f. lot. The building would be a maximum height of about 24 feet from grade, and would have the following setbacks from property lines: 25 feet from the wester front, 20 feet from the northern side, 28 feet from the eastern rear side, 10 feet from the southern side. Design review is required because the project would exceed 3,500 square feet of floor area. Project plans are online at:

[http://www.marincounty.org/depts/cd/divisions/planning/projects/kentfield/28-wolfe-canyon-lp\\_dr\\_p1736\\_kf](http://www.marincounty.org/depts/cd/divisions/planning/projects/kentfield/28-wolfe-canyon-lp_dr_p1736_kf)

**8:00.** Updates, communications, and future agenda items

Agenda information: Anne Petersen, 415-453-1372

The Kentfield Planning Advisory Board meets 2<sup>nd</sup> and 4<sup>th</sup> Wednesdays at 7 PM, in the College of Marin Student Center. The Board reviews and makes recommendations to the County on projects in the unincorporated Kentfield area, excluding Kent Woodlands. Recommendations are advisory only. (Public notices online: [http://www.co.marin.ca.us/depts/CD/Main/comdev/CURRENT/notices/public\\_notices.htm](http://www.co.marin.ca.us/depts/CD/Main/comdev/CURRENT/notices/public_notices.htm))



In accordance with the Americans with Disabilities Act, if you need special assistance (i.e. auxiliary aids or services) in order to participate in this public meeting, please contact the Clerk of the Board of Supervisors by calling (415) 499-6172 (TTY) or (415) 499-7331 (voice) **at least five (5) business days** prior to the meeting.