

Kentfield Planning Advisory Board

P.O. Box 304, Kentfield, California 94914

Agenda: Wednesday, September 14, 2016, 7:00 P.M.

Deedy Lounge, Student Center, College of Marin

& 10891 Sunshine Coast Hwy, Powell River, BC, Canada

The public is invited to speak on any item on the agenda or at open time.

7:00 Open Time for Public to Speak and Review of August 24, 2016 Minutes

7:05. COM Facilities Update. District VP for Finance & Operations Greg Nelson will update the board about forums planned to involve the public in facilities master planning, and answer any questions we have about the college.

7:35 Mitchell Design Review/2nd Unit Approval, 50 Hanken Drive (Alton)

Design Review and Second Unit approval to demolish 488 s.f. garage and construct a new 805 s.f. garage with a 482 s.f. second unit above. Floor area for the garage/second unit would be 747 s.f. with maximum height of 24' 5" above surrounding grade. Property line setbacks: 63'5" from eastern line; 8' from south side; more than 100' from north side; 6' from western rear line. Design Review approval also sought to demolish 131 s.f. and construct 466 s.f. of new floor area to the existing house. These additions would reach a maximum height of 34' 6" above surrounding grade and proposed development would result in a building area of 5,698 s.f. and a floor area of 5,158 s.f., or 19% of the 26,250 square foot lot. For information: http://www.marincounty.org/depts/cd/divisions/planning/projects/kentfield/mitchell_dr_p1431_kf

8:05 Marin Catholic H.S. Use Permit Amendment/Design Review (Drake)

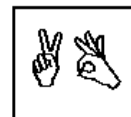
Review of additional material submitted by applicant in response to Planner's incomplete list regarding the application for a use permit amendment and design review approval for a field lighting system. As an Initial Study of possible environmental impacts will be have to be done, this meeting is an opportunity for the KPAB and public to provide comments regarding environmental issues raised by the project that could be considered in the Initial Study process. Project information, including documents under review, are at:

http://www.marincounty.org/depts/cd/divisions/planning/projects/kentfield/marin-catholic-high-school_dr_up_p1123_kf

Directions: Deedy Lounge is in the lowest floor of the Student Center, in the corner of the building nearest the creek and the new science building. You may have to go through the cafeteria. Look for sign on door.

Agenda information: Anne Petersen, 415-453-1372

The Kentfield Planning Advisory Board meets 2nd and 4th Wednesdays at 7 PM, in the College of Marin Student Center. The Board reviews and makes recommendations to the County on projects in the unincorporated Kentfield area, excluding Kent Woodlands. Recommendations are advisory only. (Public notices online: http://www.co.marin.ca.us/depts/CD/Main/comdev/CURRENT/notices/public_notices.htm)



In accordance with the Americans with Disabilities Act, if you need special assistance (i.e. auxiliary aids or services) in order to participate in this public meeting, please contact the Clerk of the Board of Supervisors by calling (415) 499-6172 (TTY) or (415) 499-7331 (voice) at least five (5) business days prior to the meeting.