

Kentfield Planning Advisory Board

P.O. Box 304, Kentfield, California 94914

Agenda: Wednesday, October 22, 2014

7:30 p.m., Deedy Lounge, Student Center, College of Marin

The public is invited to speak on any item on the agenda or at open time.

7:30 Open Time and Review of Minutes of September 24, 2014

7:35 920 Sir Francis Drake Blvd Design & Sign Review (Taylor/Scoble)

Application for design review approval for enclosure of four two-car carports with four garage doors at an existing eight unit apartment building fronting on Sir Francis Drake Blvd. The garage doors would have a maximum height of 7 feet, 2 inches above the surrounding grade and the exterior walls would have the following minimum setbacks from property lines: 21 feet from the north front line, 22 feet from the south rear, 60.5 feet from the east side, and and 29.75feet from the west side.

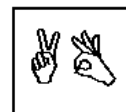
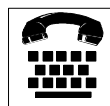
The applicant also requests sign review approval for installation of a non-illuminated free-standing monument sign to identify the name of the apartment building located within a residential zoning district. The sign would be approximately 3 feet tall and 10 inches wide resulting in 18 square feet of sign area. The base of the free-standing sign would be about 1.5 feet tall, 10 inches wide, and 6 feet long, resulting in 9 square feet of area. The overall height of the sign would be 4.66 feet above the surrounding grade and would have the minimum following setbacks greater than 100 feet from the north front property line, 16 feet from the south rear, 85.5 feet from the east side, and 4 feet from the west side.

8:00 Reports and Updates

Directions: Deedy Lounge is in the lowest floor of the Student Center, in the corner of the building nearest the creek and the new science building. You may have to go through the cafeteria. Look for sign on door.

Agenda information: Anne Petersen, 415-453-1372

The Kentfield Planning Advisory Board meets 2nd and 4th Wednesdays at 7:30 PM, in the College of Marin Student Center. The Board reviews and makes recommendations to the County on projects in the unincorporated Kentfield area, excluding Kent Woodlands. Recommendations are advisory only. (Public notices online: http://www.co.marin.ca.us/depts/CD/Main/comdev/CURRENT/notices/public_notices.htm)



In accordance with the Americans with Disabilities Act, if you need special assistance (i.e. auxiliary aids or services) in order to participate in this public meeting, please contact the Clerk of the Board of Supervisors by calling (415) 499-6172 (TTY) or (415) 499-7331 (voice) **at least five (5) business days prior to the meeting.**