

COMMUNITY DEVELOPMENT AGENCY
BUILDING AND SAFETY DIVISION

May 17, 2012

Larry Beaton, DPW Capital
3501 Civic Center Drive
San Rafael, CA 94903

Dear Larry,

I have reviewed your request for departure from strict compliance with the accessible parking stall signage provision of 2010 California Building Code Section 1129B.4 requiring each designated accessible parking stall to be posted separately.

Given that the entire proposed parking area serves only accessible parking, and your proposal to provide equivalent or greater access to and usability of this parking facility through single signage designation of each accessible-only parking lot, I find your request satisfies the intent of Section 1129B.4 and is permissible under the provisions of Section 1101B.1(2) and (3).

Your request is hereby approved to include the stipulation that you install signage at each accessible parking stall as indicated in your request letter of May 8, 2012.

In accordance with 2010 California Building Code Section 1.9.1.5 this approval requires ratification by the Marin County Access Appeals Board (19.04.028(b), MCC), prior to granting. I have included this item on our Access Board meeting agenda for June 21, 2012.

Please expect to receive my response to your request following our meeting.

Sincerely,

William "Bill" Kelley, CBO
CDA Deputy Director, Building & Safety

MARIN COUNTY ACCESS APPEALS BOARD RATIFICATION

Ratified

Not Ratified

Larry Hoytt, Chair

Date

May 8, 2012

To: Bill Kelley, CBO
From: Larry Beaton, DPW Capital
Subject: Request for Departure from Technical and Scoping Requirements of 1129B.4 Pursuant to 1101B.1 (2) for Marin Veteran's Memorial Auditorium Path of Travel and Accessible Parking Improvements Project

The project at the Veteran's Memorial Auditorium is an accessibility project using the concepts of universal design to maximize the accessibility, functionality and aesthetics of the new parking and path of travel to the auditorium entrances. With this objective in mind, the new accessible parking areas are being placed immediately adjacent to the auditorium at both the main and the north entrances. A one-way driveway will be the only point of vehicle access for each of these banks of accessible parking stalls.

This design (single-entrance to a small parking area that serves only accessible stalls) results in proposing a modified approach to signage. A single set of the required parking signage, including tow-away sign and ISA parking sign with the \$250 fine sign would be installed at each of the entrances to these parking banks. Van accessible signage would still be mounted at the front end of each van accessible stall in order to differentiate these from the accessible stalls with standard width access aisles.

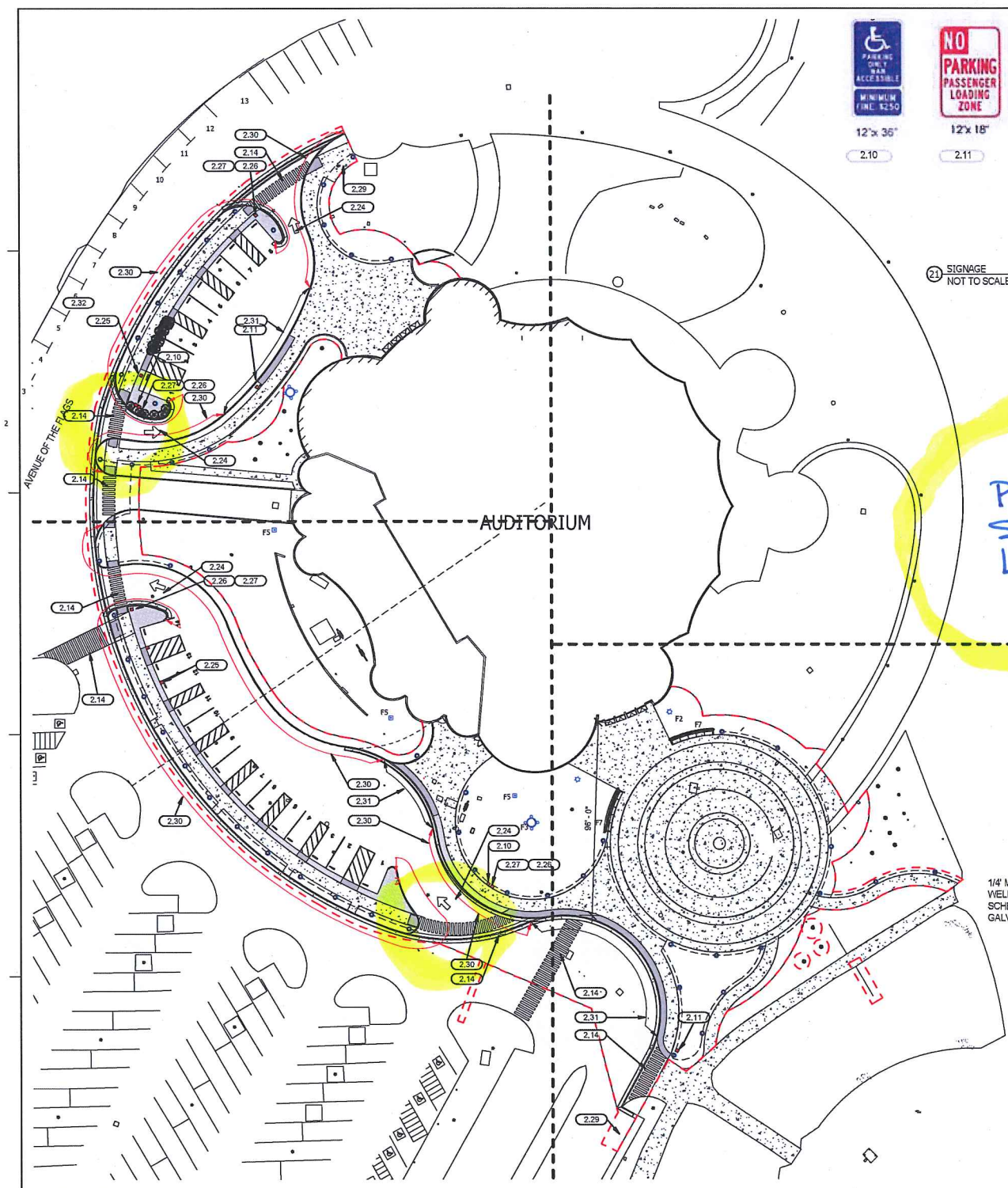
We believe this approach satisfies the intent of the signage requirements of the 2010 CBC Section 1129B.4 and that the use of a different signage design, as allowed under Section 1101B.1, will provide equivalent access to and usability of the parking stalls because:

1. It will facilitate limiting access to the entire parking area and make it safer for those who require accessible parking, by reducing non-accessible parking traffic flow,
2. It will align with the County's greenhouse gas reduction priority by reducing the installation of redundant signage at each parking stall,
3. It will align with the County's historical preservation of the Marin Veteran's Memorial Auditorium through reduced visual signage clutter.

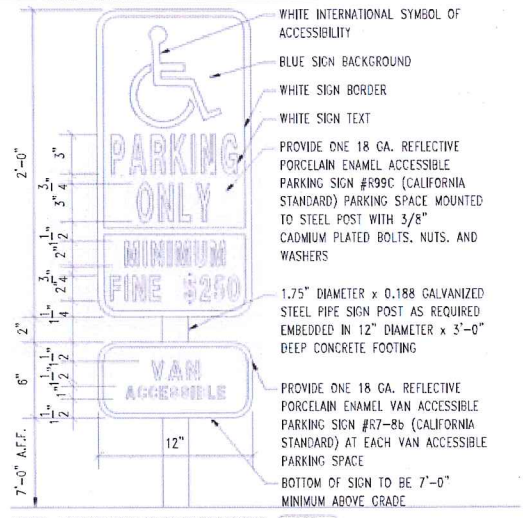
These small specialized parking areas will greatly improve the parking accessibility at the Auditorium and the proposed signage is expected to work well in this situation. However, if the proposed signage causes problems, DPW will add signs at each stall.

p:\cp_build\projects 2011\projects\11-030 marin center auditorium pot improvements\02-design\02-correspondence\01-memos\memo on signage 5 8 12.doc

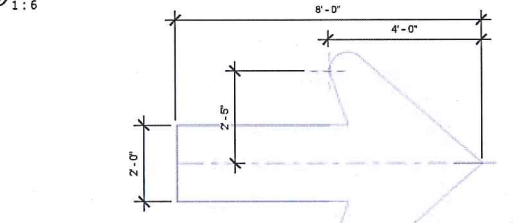
c:\documents and settings\bkelly\local settings\temporary internet files\content.outlook\22pugh56\memo on signage 5 8 12.doc



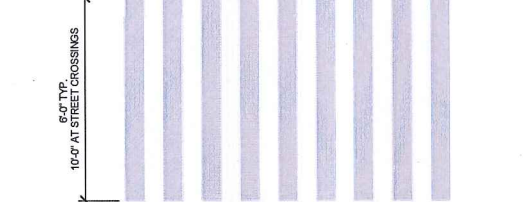
21 SIGNAGE NOT TO SCALE



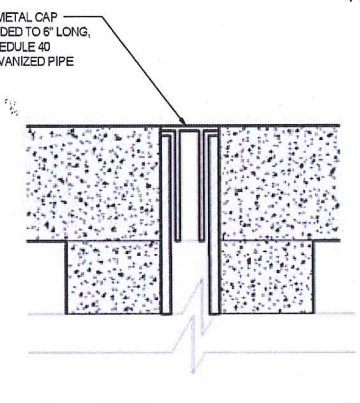
DETAIL - PARKING SIGN AT ENTRY TO PARKING 2.25



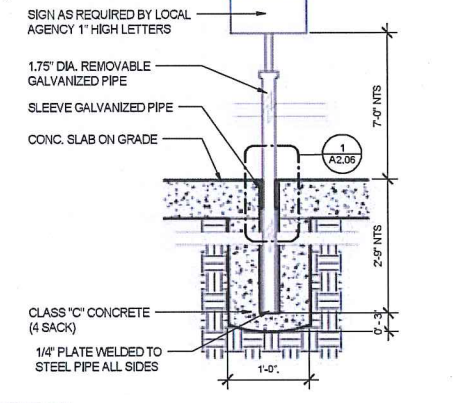
23 SIGNAGE - ARROW 2.24



29 PAVEMENT STRIPING 2.14



28 DETAIL - POLE SLEEVE 3" = 1'-0"



30 DETAIL - STREET SIGN 1" = 1'-0"

2 SITE PLAN - SIGNAGE 1" = 30'-0"

IF THIS SHEET IS NOT 22" x 34" IT IS REDUCED PRINT - SCALE ACCORDINGLY

ARCHITECT: **DHA**
 DANADJEVA HANSEN ARCHITECTS, INC.
 BOX 888, TIBURON, CA 94920
 PH: (415) 435-5377 FAX: (415) 435-4240

OWNER: **MARIN COUNTY**
 DEPARTMENT OF PUBLIC WORKS
 3501 CIVIC CENTER DRIVE, SAN RAFAEL, CA 94903
 PH: (415) 499-6412

DESIGNED BY: FDH

CONSULTANTS: CIVIL ENGINEERS
ILS ASSOCIATES
 79 GALLI DRIVE, SUITE A, NOVATO, CA 94949
 PH: (415) 863-8200

ELECTRICAL ENGINEERS
SUSANNA VAN LEUVEN
 54 SAN RAFAEL AVE., SUITE A, SAN ANSELMO, CA 94960
 PH: (415) 457-8825

LANDSCAPE ARCHITECTS
BRIAN POWELL & ASSOCIATES
 181 CARLOS DRIVE, NO. 101, SAN RAFAEL, CA 94903
 PH: (415) 491-4480

KEYNOTES

2.10 SIGNAGE - TOW AWAY, SEE 27/A2.06.
 2.11 SIGNAGE - PASSENGER LOADING ZONE, NO PARKING, SEE 21/A2.06.
 2.14 STRIPING, SEE 29/A2.06.
 2.24 SIGN PAINTED ON PAVING, SEE 28/A2.06.
 2.25 SIGNAGE - PARKING SIGN AT ENTRY TO PARKING AREA, INSTALL VAN ACCESSIBLE SIGN AT EACH VAN ACCESSIBLE STALL, SEE 27/2.06.
 2.26 SIGNAGE - DO NOT ENTER, SEE 21/A2.06.
 2.27 SIGNAGE ONE WAY, SEE 21/A2.06.
 2.29 BIKE PARKING, CONC. PAD SIZE 8FT X 18 FT
 2.30 PAINT ENTIRE CURB RED
 2.31 PAINT 12" ALONG CURB AND DOMES, COLOR WHITE
 2.32 STRIPING INC

NO.	ISSUE DESCRIPTION	DATE
1	CONSTRUCTION DOCUMENTS	15 MAR 12

MARIN VETERANS MEMORIAL AUDITORIUM
 PATH OF TRAVEL AND PARKING IMPROVEMENTS
 10 AVENUE OF THE FLAGS, SAN RAFAEL, CA 94903
 APN # 179-270-12

SIGNAGE & PAVEMENT STRIPING (ALT. 1)

SCALE: As Indicated
 PROJECT NUMBER: 1103.00
 DATE: 15 MAR 12

DRAWING NUMBER: **A2.06**

THESE DOCUMENTS ARE SOLE PROPERTY OF THE ARCHITECT. DUPLICATION AND USE OF THESE DOCUMENTS FOR ANY PURPOSE THAN CONSTRUCTION OF THIS PROJECT WITHOUT THE WRITTEN PERMISSION OF THE ARCHITECT IS PROHIBITED.

NOT FOR CONSTRUCTION