

**FILED**

7/13/2023

FILING REQUESTED BY AND  
WHEN FILED RETURN TO:

**Marin County Department of Public Works  
3501 Civic Center Drive, Room 304  
San Rafael, CA 94903**

**SHELLY SCOTT  
MARIN COUNTY CLERK  
By O. Lobato, Deputy  
21 - 2023 -154**

**Attn: Hannah Lee and Felix Meneau**

**NOTICE OF EXEMPTION**

Marin County  
Environmental Coordination and Review

July 10, 2023

1. **Project Name:** Enhanced Storm Drain Maintenance in Marin City within Southern Marin
2. **Project Location:** (1) Segment of Donahue Street between the intersection of Southbound Highway 101 Ramp and Donahue Street and the Southbound Highway 101 overpass. (2) Segment of North Bridge Boulevard between the intersection of Northbound Highway 101 Overpass and Bridgeway Drive and Gate 6 Road just north of Bridgeway Road, (3) Cole Drive between Drake Avenue (North) and Drake Avenue (South), (4) Park Circle near Donahue Street

3. **Project Description:**

Several storm drains within Marin City are currently blocked with debris and are not functioning as intended. The project's purpose is to restore and document cleaning of the storm drainage catch basins and connecting storm drainage pipe to reduce flood risk. At most, one vehicular lane at the identified storm drainage catch basin areas listed below will be temporarily closed for equipment setup. General vehicular traffic flow and traffic patterns will be maintained during the work.

(1) Marin City Map A3:

Five storm drainage catch basins along with connecting storm drainage pipes on both sides of Donahue Street in Marin City will be cleaned. Four storm drainage catch basins are on the southern side of Donahue Street and one storm drainage catch basin is on the northern side of Donahue Street.

(2) Marin City Map A2:

Two storm drainage catch basins along with four connecting storm drainage pipes on eastbound land of North Bridge Boulevard and one storm drainage catch basin along with connecting storm drainage pipe cross Gate 6 Road just north of Bridgeway Street will be cleaned.

(3) Marin City Map A4:

One storm drainage catch basin along with two connecting storm drainage pipes along Cole Drive will be cleaned.

**C-24-02**

POSTED 7/13/23 TO 8/12/23

(4) Marin City Map A1:

Two storm drainage catch basins will be cleaned just west of Donahue Street intersection within Park Circle along with two connecting storm drainage pipes crossing Park Circle and Donahue Street.

The cleaning process for all areas listed above and shown in the enclosed maps will involve: (1) establishing temporary traffic control to provide a safe and designated temporary working equipment area, (2) plugging the connected pipes as needed, to prevent downstream tidal inflows/outflows during the work, (2) pressure jetting/spraying to break up blockages within the storm drainage pipes, (3) vactoring sediment into a twelve cubic yard vactor truck, (4) temporarily stockpiling of solid sediments in a nearby area that is 500 feet or more from any water body before permanent disposal to off-site disposal area, (5) disposal of decanted water at nearby sanitary district, and (6) performing as-needed televised inspections within the storm drainage pipes following clearing of sediment.

4. **Public Agency Approving Project:** Rosemarie Gaglione – Director of Marin County Department of Public Works
5. **Project Sponsor:** Marin County Flood Control and Water Conservation District
6. **CEQA Exemption Status:** Section 15301, Existing Facilities, Class 1 (b)-(c)
7. **Reasons for Exemption:** Vactoring pipes is considered maintenance of existing structure. The maintenance work is limited to the existing pipes and best management practices will be employed; therefore the work does not pose any potential for significant environmental impacts.

Project [Engineer or Contact]:

*Felix Meneau*

---

Felix Meneau, CFM, P.E.  
Capitol Planning & Project Manager III  
Telephone: (415) 473-3223

Reviewed by:

*Rachel Reid*

---

Rachel Reid  
Environmental Planning Manager

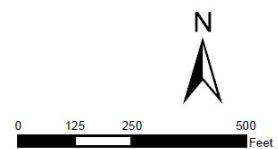
# VICINITY MAP OVERVIEW (Areas highlighted for Cleaning)



- Selected Basins
- County Maintained Roadway
- City/Town

**Marin County Flood Control and  
Water Conservation District:  
Zone 3**

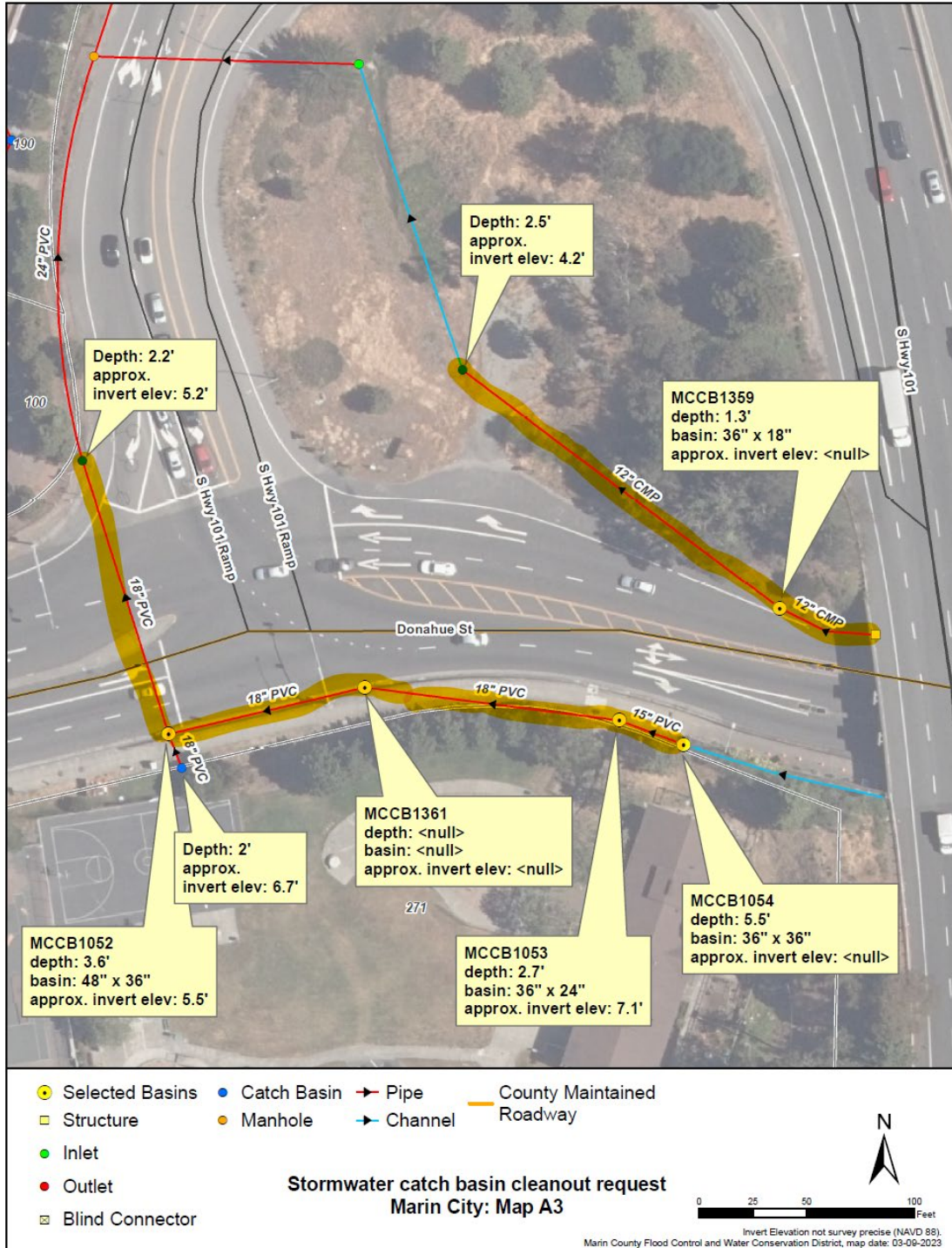
**Stormwater catch basin cleanout request  
Marin City**



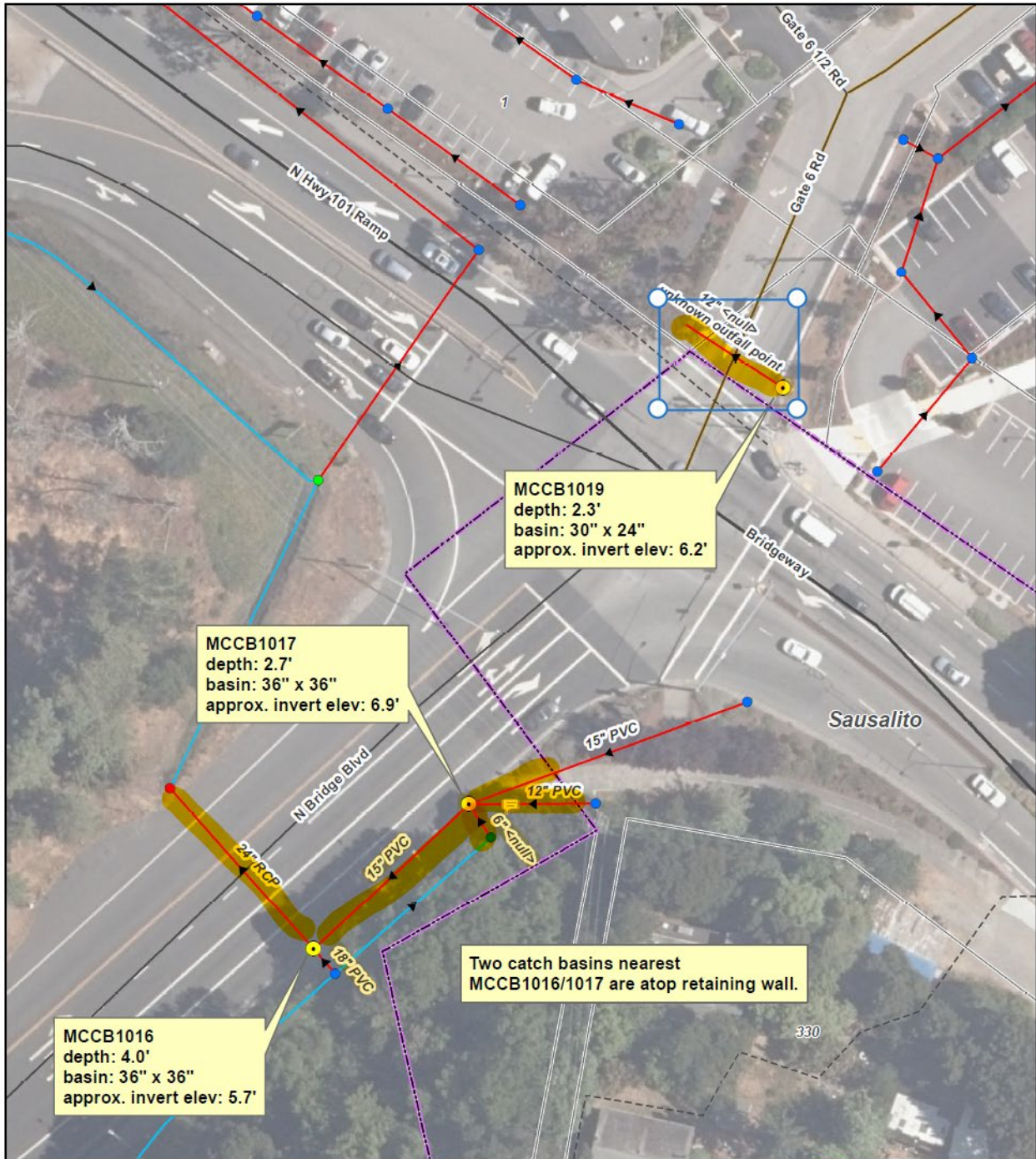
map date: 03-09-2023



# (1) Marin City Map A3 (Areas highlighted for Cleaning)

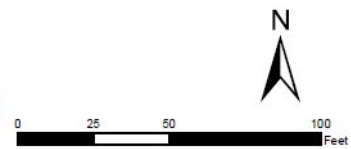


**(2) Marin City Map A2 (Areas highlighted for Cleaning)**



- Selected Basins    ● Catch Basin    → Pipe    — County Maintained Roadway    □ City/Town
- Structure    ● Manhole    → Channel
- Inlet
- Outlet
- ⊠ Blind Connector

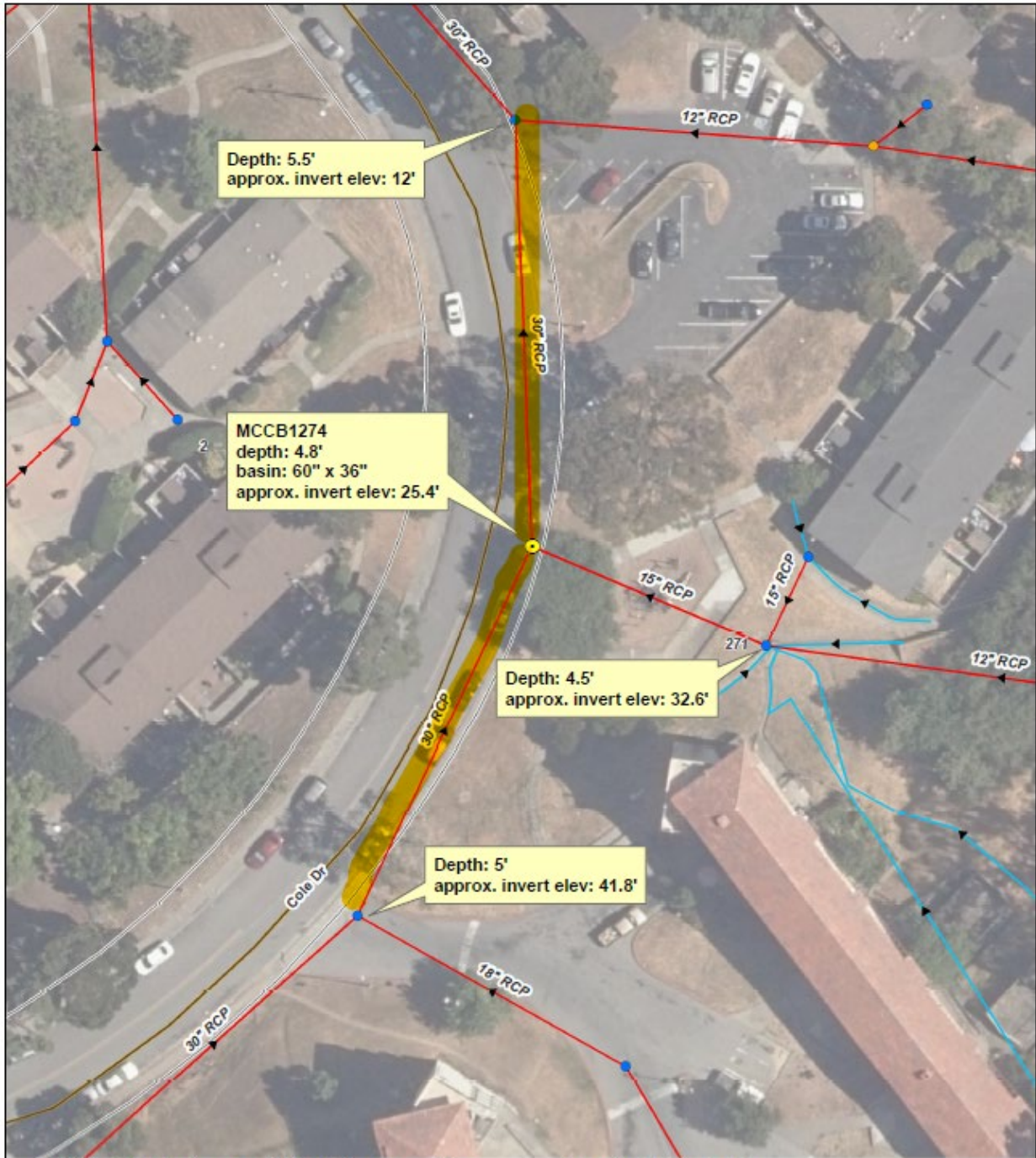
**Stormwater catch basin cleanout request  
Marin City: Map A2**



Invert Elevation not survey precise (NAVD 88).  
Marin County Flood Control and Water Conservation District, map date: 03-09-2023





**(3) Marin City Map A4 (Areas highlighted for Cleaning)**



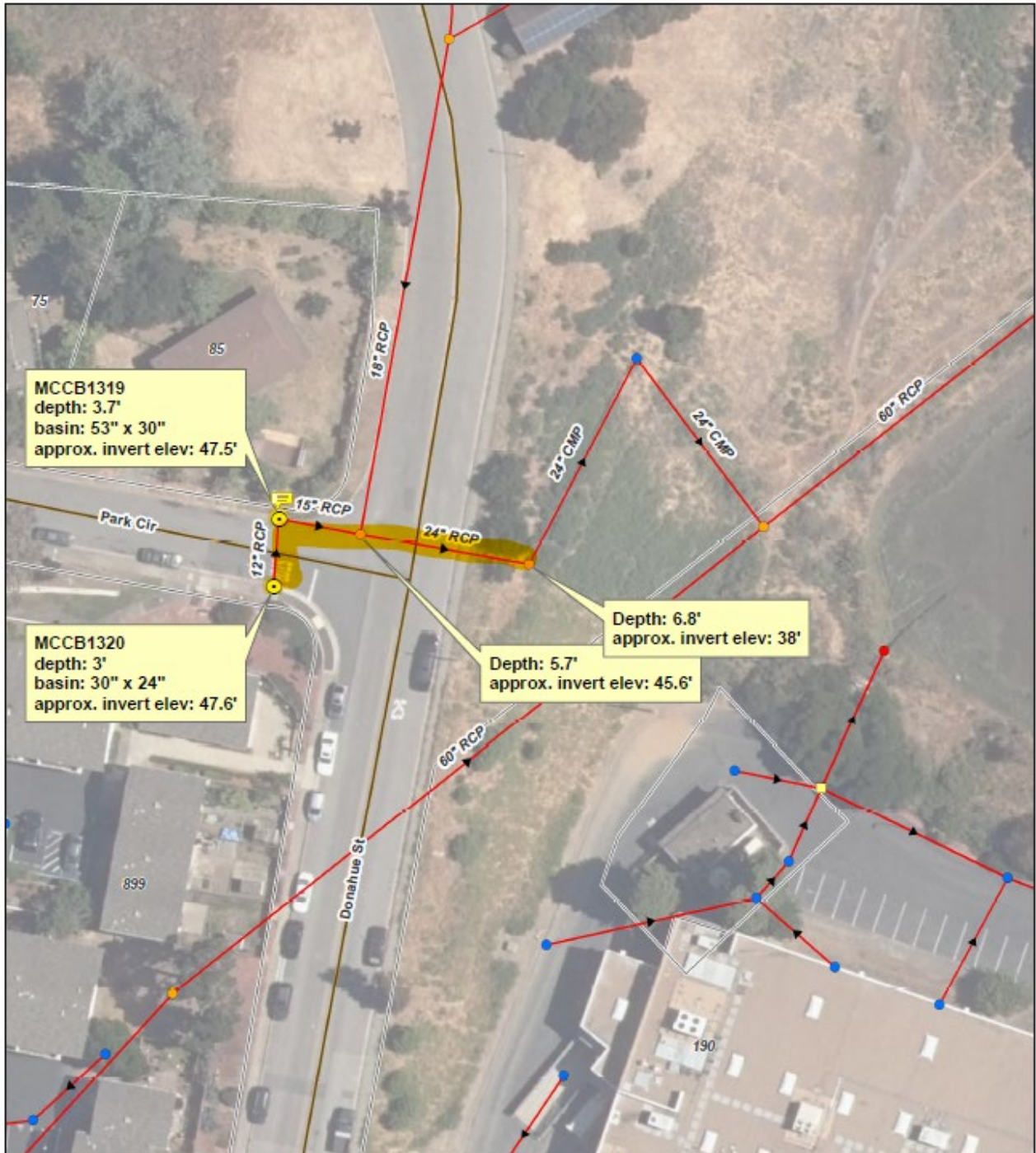
● Selected Basins	● Catch Basin	→ Pipe	— County Maintained Roadway
□ Structure	● Manhole	→ Channel	
● Inlet			
● Outlet			
⊗ Blind Connector			

**Stormwater catch basin cleanout request  
Marin City: Map A4**

Invert Elevation not survey precise (NAVD 88).  
Marin County Flood Control and Water Conservation District, map date: 03-09-2023

**(4) Marin City Map A1 (Areas highlighted for Cleaning)**



Selected Basins	Catch Basin	Pipe	County Maintained Roadway
Structure	Manhole	Channel	
Inlet			
Outlet			
Blind Connector			

**Stormwater catch basin cleanout request  
Marin City: Map A1**

Invert Elevation not survey precise (NAVD 88).  
Marin County Flood Control and Water Conservation District, map date: 03-09-2023