

MARIN RECOVERS INDUSTRY ADVISORS

A safe and measured re-opening process will require unprecedented collaboration of health care leaders, industry, and government. United, we can forge new lines of communication that allow timely coordination, real-time data monitoring and actionable processes. With strengthened self-measures (e.g., physical distancing, facial coverings, and personal hygiene), ongoing monitoring of community health, and industry input, businesses can begin to reopen with modifications.

Marin Recovers Industry Advisors

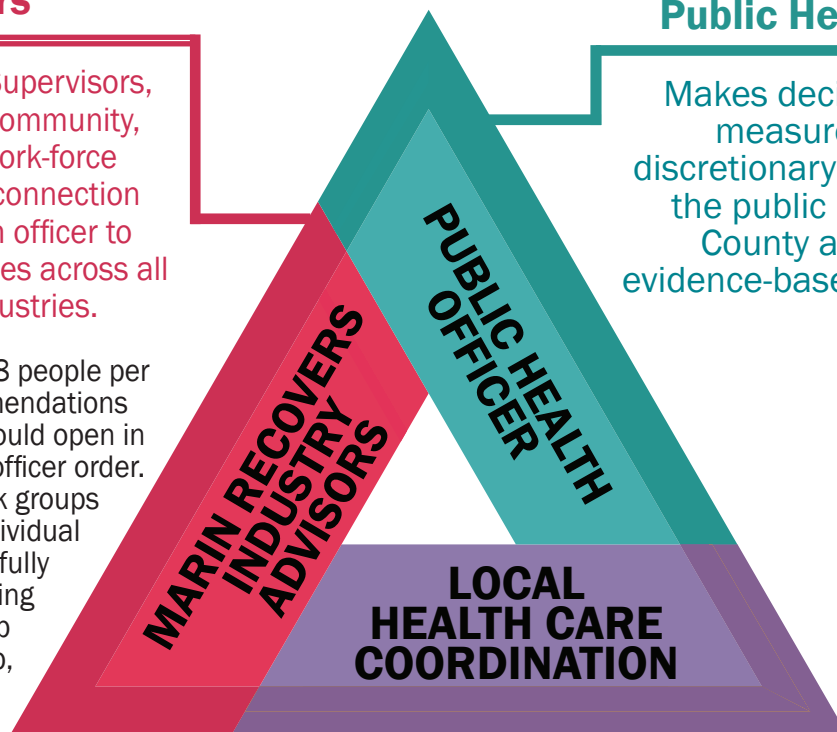
Led by the Board of Supervisors, groups of industry, community, health care, and work-force leaders providing a connection for the public health officer to operationalize measures across all activities and industries.

Industry work groups: 5-8 people per group to provide recommendations about how an industry could open in compliance with health officer order. In addition, industry work groups educate and support individual organizations in successfully planning and implementing recommendations. Group is diverse in membership, including members who represent both small and large organizations within an individual industry, as well as trade associations/groups.

- Restaurants
- Retail
- Construction
- Parks/Outdoor Recreation/Golf Courses
- General Office Space (e.g., industrial, tech, etc)
- Summer Camps and Youth Activities
- Transportation
- Hotels/Motels/Hospitality
- Personal Services
- Small Business
- Arts Sector

Public Health Officer

Makes decisions regarding measures, including discretionary orders, to protect the public health of Marin County and ensure an evidence-based and data driven



Local Health Care Coordination

A comprehensive set of public health sector and patient populations

- Recommends permissible activities and industries based on transmission risk factors
- Provides guidance on universal criteria for re-opening
- Supports and consults with the Marin Recovers Industry Advisors
- Reviews proposed operational standards (as requested)

