

- COASTAL RESIDENTIAL SINGLE FAMILY PLANNED
C-RSP-0.25 4 ACRES/UNIT
- COASTAL SUBURBAN AGRICULTURE
C-R-A-B-5 2 ACRES/LOT
- C-R-A-B-4 1 ACRE/LOT
- C-R-A-B-2 10,000 SQ.FT./LOT
- COASTAL AGRICULTURE - RESIDENTIAL PLANNED
C-A-RP-60 60 ACRES/LOT
- COASTAL OPEN AREA
C-DA
- COASTAL VILLAGE COMMERCIAL-RESIDENTIAL
C-VCR

APPROVED ZONING
MAY 19, 1981

I hereby certify that this map purveys the boundaries of **Categorical Exclusions E-81-2 and E-82-6** for the **County of Marin** as shown on the map.

APPROVED BY THE CALIFORNIA COASTAL COMMISSION: *May 19, 1981*

STATE OF CALIFORNIA
COUNTY OF SAN FRANCISCO

1st Day of May 1981

STATE OF CALIFORNIA
COUNTY OF SAN FRANCISCO

1st Day of May 1981

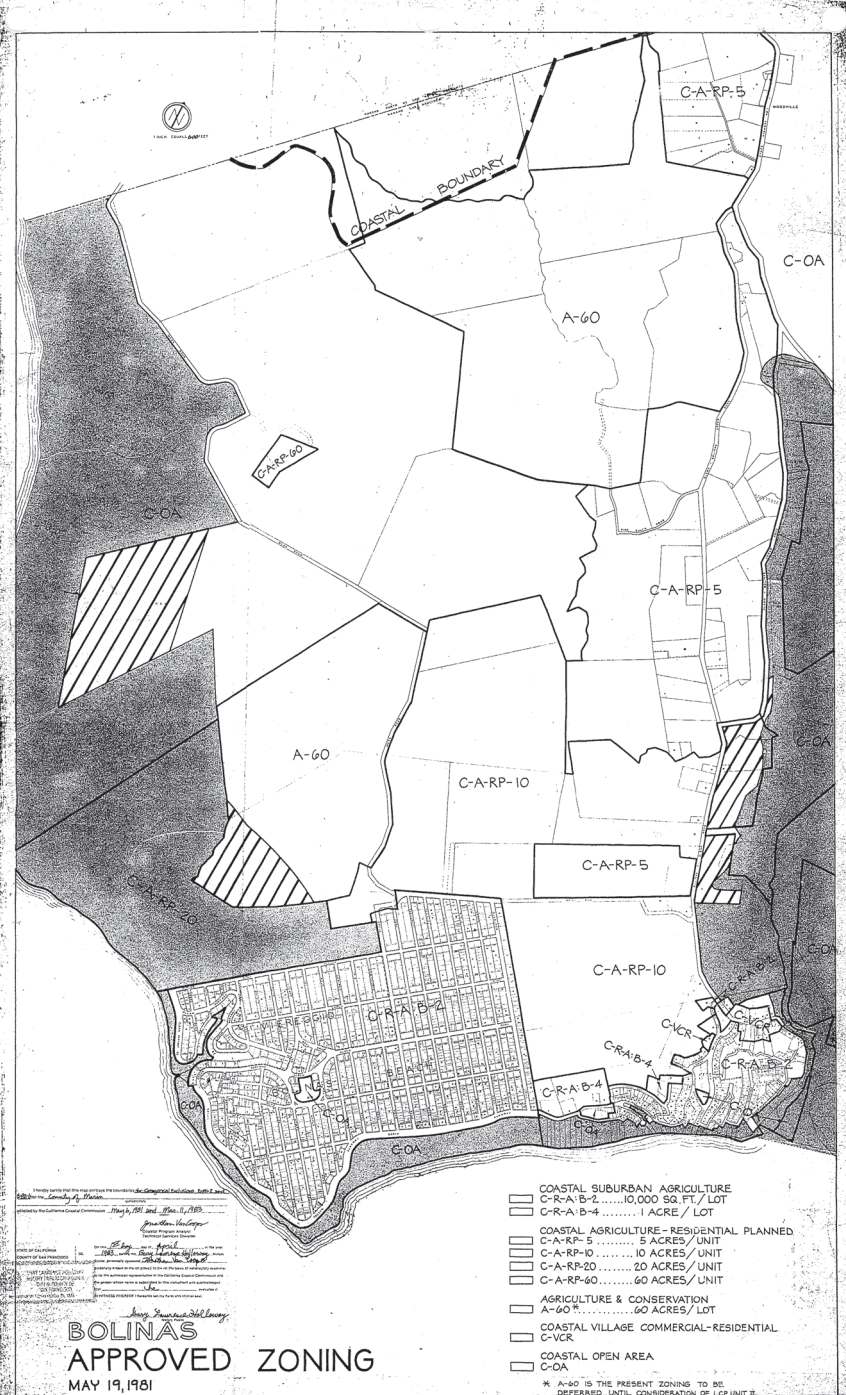
CATEGORICAL EXCLUSION E-82-6
CATEGORICAL EXCLUSION E-81-2
Marin Co. Unit 1
Muir Beach

California Coastal Commission

Non-excludable Areas

Additional Non-excludable Areas
(Agriculturally Related Development Only)

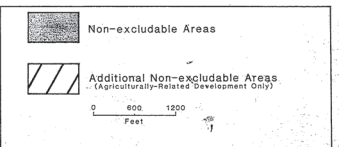
0 600 1200
Feet

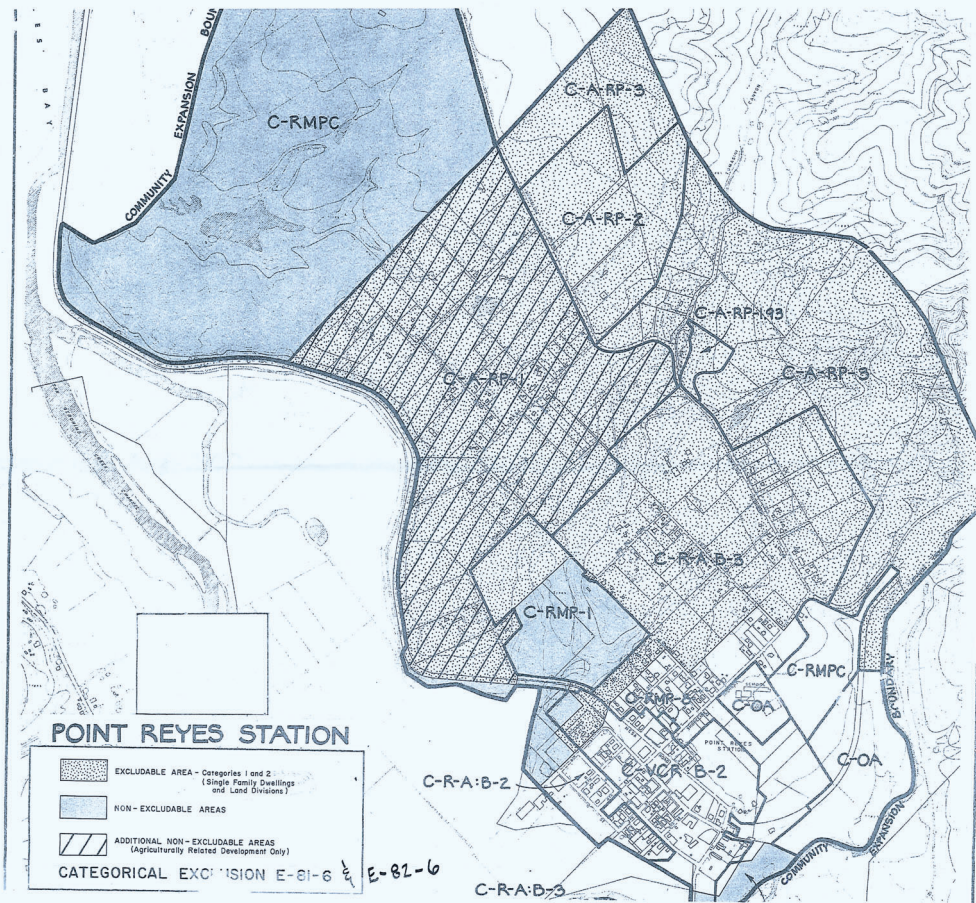


CATEGORICAL EXCLUSION E-81-2
CATEGORICAL EXCLUSION E-81-2
 Marin Co. Unit I
 Bolinas

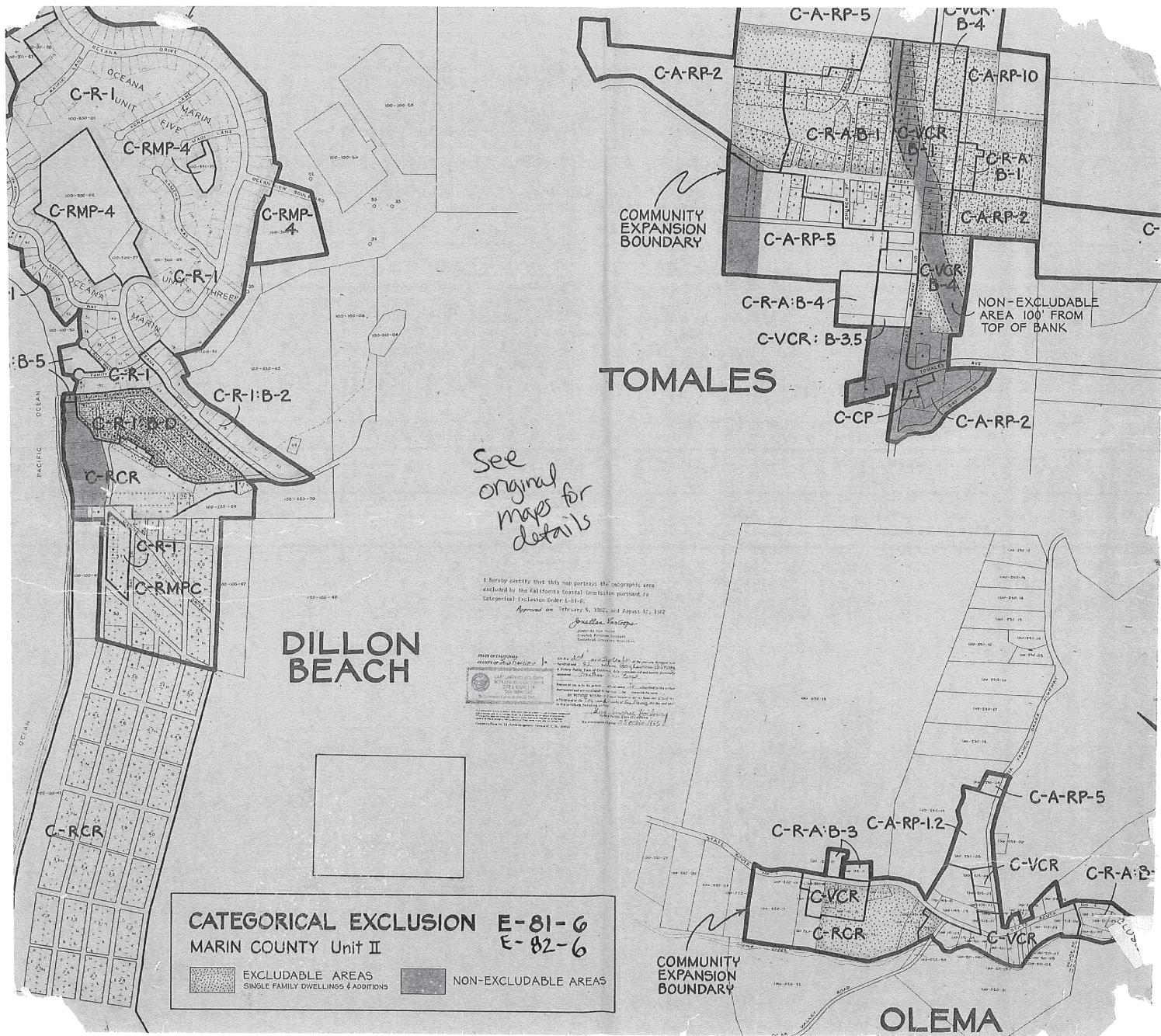
APPROVED ZONING
 MAY 19, 1981

California Coastal Commission





See original map for details



See original maps for details


I hereby certify that this map portrays the geographic area excluded by the California Coastal Commission pursuant to categorical exclusion under C.E.C. 15.14.
 Approved February 5, 1982, and August 17, 1982

Joshua Vasquez
 County Planning Director
 Planning Department
 Building Division, Room 1100

STATE OF CALIFORNIA
 COUNTY OF SAN FRANCISCO
 PLANNING DEPARTMENT
 BUILDING DIVISION, ROOM 1100
 100 MARKET STREET, SAN FRANCISCO, CALIFORNIA 94102
 TELEPHONE: 478-3300
 FAX: 478-3300
 CATEGORICAL EXCLUSION UNDER C.E.C. 15.14
 This map is a categorical exclusion under C.E.C. 15.14. It is not subject to the public hearing and notice requirements of the California Coastal Act of 1972. It is subject to the provisions of the California Coastal Act of 1972, and the California Coastal Commission's rules and regulations. The map is prepared by the Planning Department, Building Division, Room 1100, 100 Market Street, San Francisco, California 94102. The map is dated February 5, 1982, and August 17, 1982.

CATEGORICAL EXCLUSION E-81-6
MARIN COUNTY Unit II E-82-6

 EXCLUDABLE AREAS
 SINGLE FAMILY DWELLINGS & ADDITIONS

 NON-EXCLUDABLE AREAS